

NOTE: ALL MATERIALS INCLUDING FOR MORTAR JOINTS TO BE DISPLAYED ON MOCKUP PANEL ON SITE.

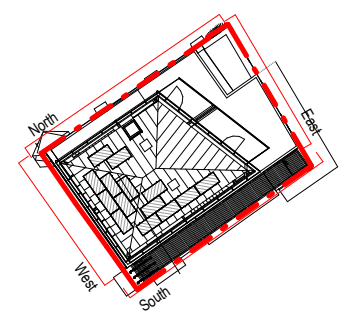
NOTE: ALL DRAWINGS TO BE READ IN CONJUNCTION WITH CONTRACT SCOPE OF WORKS TO BE SHELL AND CORE ONLY.

NOTES

DO NOT SCALE DIMENSIONS OFF THIS DRAWING
CHECK ALL DIMENSIONS ON SITE BEFORE FABRICATION
REPORT ALL ERRORS OR OMISSIONS TO SPRUNT LIMITED
ANY DISCREPANCY TO BE VERIFIED WITH SPRUNT LIMITED BEFORE PROCEEDING WITH THE WORKS
THIS DRAWING IS PROTECTED UNDER COPYRIGHT AND SHALL NOT BE REPRODUCED IN PART OR WHOLE WITHOUT PRIOR EXPRESSED PERMISSION OF SPRUNT LIMITED

CDM 2015
ALL CURRENT DRAWINGS AND SPECIFICATIONS FOR THE PROJECT MUST BE READ IN CONJUNCTION WITH THE DESIGNER'S HAZARD AND ENVIRONMENT ASSESSMENT RECORD

0 1 2 3 4 5
Scale 1:100 in meters

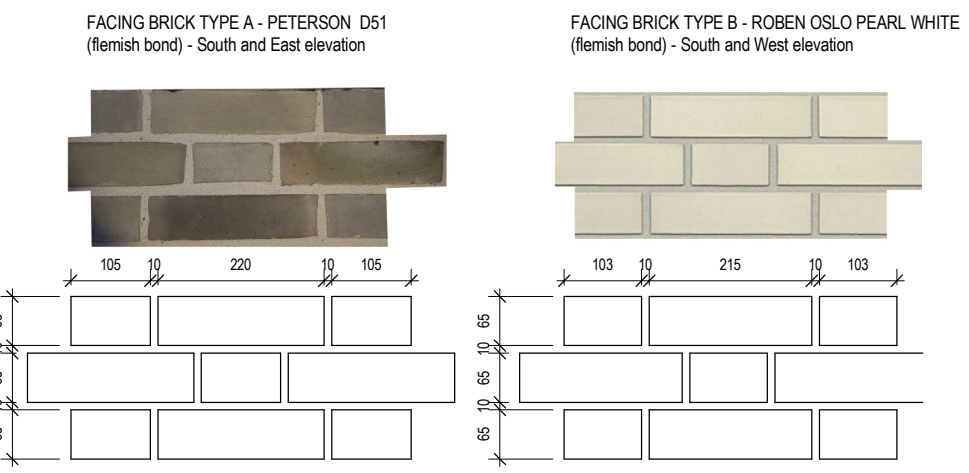


Elevation Key
Scale 1:500

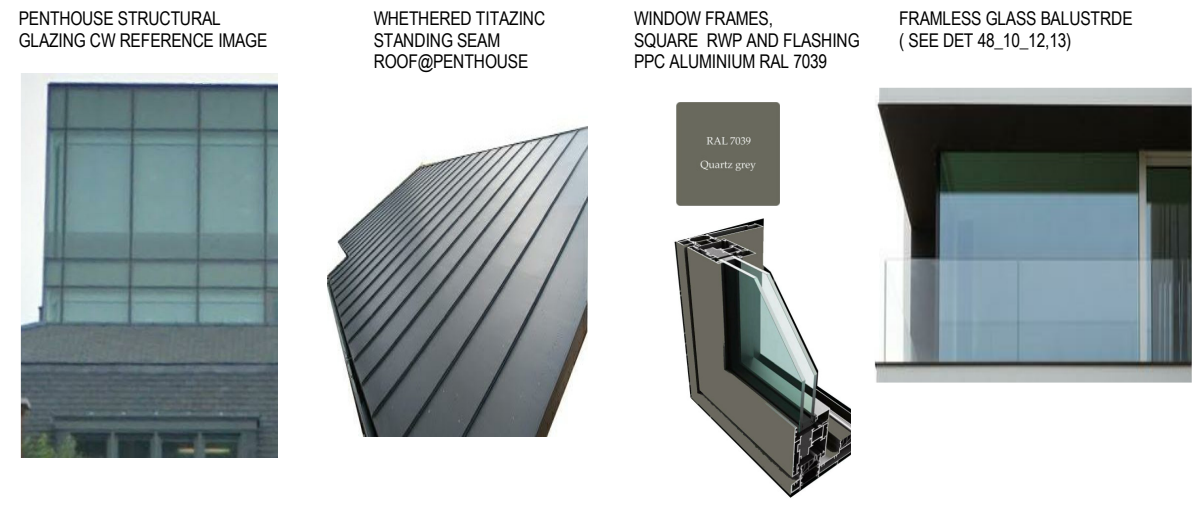
NOTE: ALL OPENABLE WINDOWS TO BE CONFIRMED UPON RECEIPT OF THE VENTILATION STRATEGY

- SPANDREL PANEL
- BRICK/ BRICK SLIP TYPE A - AS PER SPEC F10/110 & 110C
- BRICK/BRICK SLIP TYPE B - AS PER SPEC F10/110A

TYPICAL FACING BRICK ARRANGEMENT/MATERIALS



PENTHOUSE CW&ROOF ARRANGEMENT/ MATERIALS



5_4	LB	23.12.16	Minor amendments to glazed balustrade
5_3	JS	24.11.16	OPENINGS UPDATED
5_2	JS	04.10.16	COORDINATED WITH M&E
5_1	JS	22.08.16	FIRST ISSUE FOR COORDINATION
REV	BY	DATE	DESCRIPTION
STATUS			
STAGE 5 - FOR CONSTRUCTION			
CONTRACTOR			
GOLDSMITH			
PROJECT			
12456 - 81a/b BAYHAM STREET			
CLIENT			
REV 1			
DRAWING TITLE			
East Elevation			
DATE CREATED	DATE AMENDED	SCALE	
15.04.16	23.12.16	As indicated@A3	
DRAWN BY	AMENDED BY	CHECKED	
JS	LB	JK	
DRAWING NO & REVISION			
12456-SPR-RES-30_02-5_4			
First Floor, 20 Northdown Street London N1 9BG			
T +44 (0)20 7833 3555 F +44 (0)20 7837 0296			