

This drawing and design is for use solely in connection with the project described below. The drawing and design is the copyright of Avanti Architects Ltd, and must not be re-issued, loaned or copied without written consent. All dimensions and settings are to be checked on site before construction. This drawing is to be read in conjunction with all other information relevant to the project. Any apparent discrepancy is to be brought to the attention of Avanti Architects Ltd. Do not scale from this drawing.

Notes

- KEY:**
 TO BE READ IN CONJUNCTION WITH
 a.SPECIFICATION
 b.GA23 SERIES
 c.INTERIOR SPECIALIST JOINERY REPORT
 16032-AA-07-G4-RPT001
 d.INTERIOR SANITARY FIXTURES REPORT
 16032-AA-07-G4-RPT002

- EXISTING PARTITION
- NEW PARTITION see specification K10/125A
- NEW PARTITION FIRED RATED 60MINS see specification K10/125A
- NEW PARTITION THICKNESS TO MATCH EXISTING see specification K10/125B
- MOISTURE RESISTANT PLASTERBOARD see specification K10/125A & K10/155A
- WATER RESISTANT WEDI BOARD see specification K10/155A
- FINISHED FLOOR LEVEL TO BE CONFIRMED ON SITE
- GROUP 2 FURNITURE
- NOTICE BOARD see specification N10/195A

Revision	Date	Description
A	17/11/16	25/11/16
B		Drawing reformatted, 16032-GA-G20-LG, 00 & 03 omitted
C		For Billing
D		Tender
E		Status corrected
F		Amendments clouded

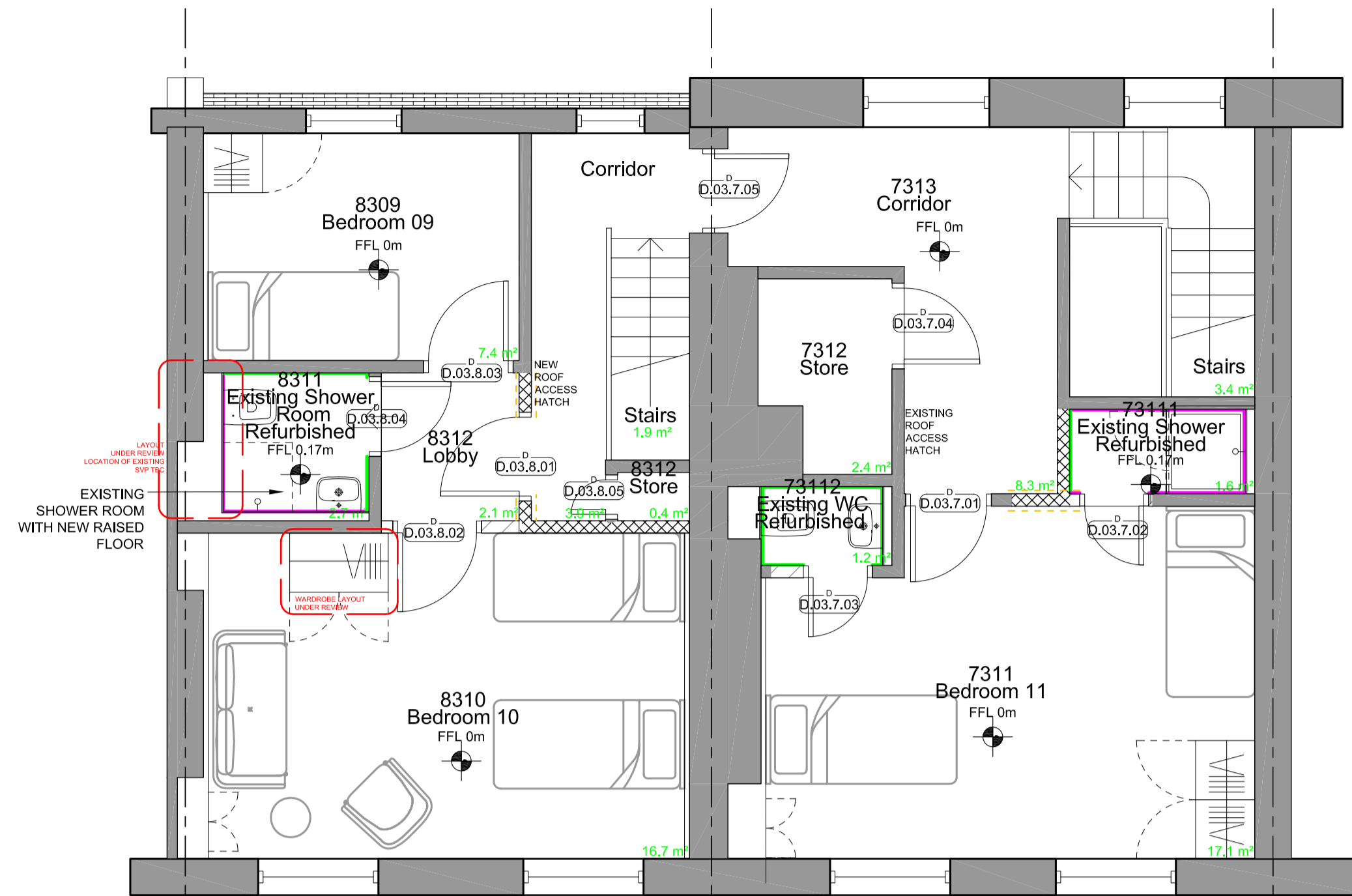
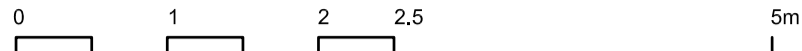
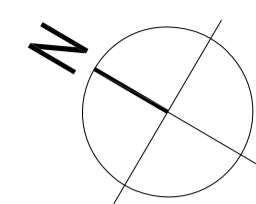
Scale	Size	Date First Issue
1:50	A1	28/10/16

Drawn by GD
Checked by DF

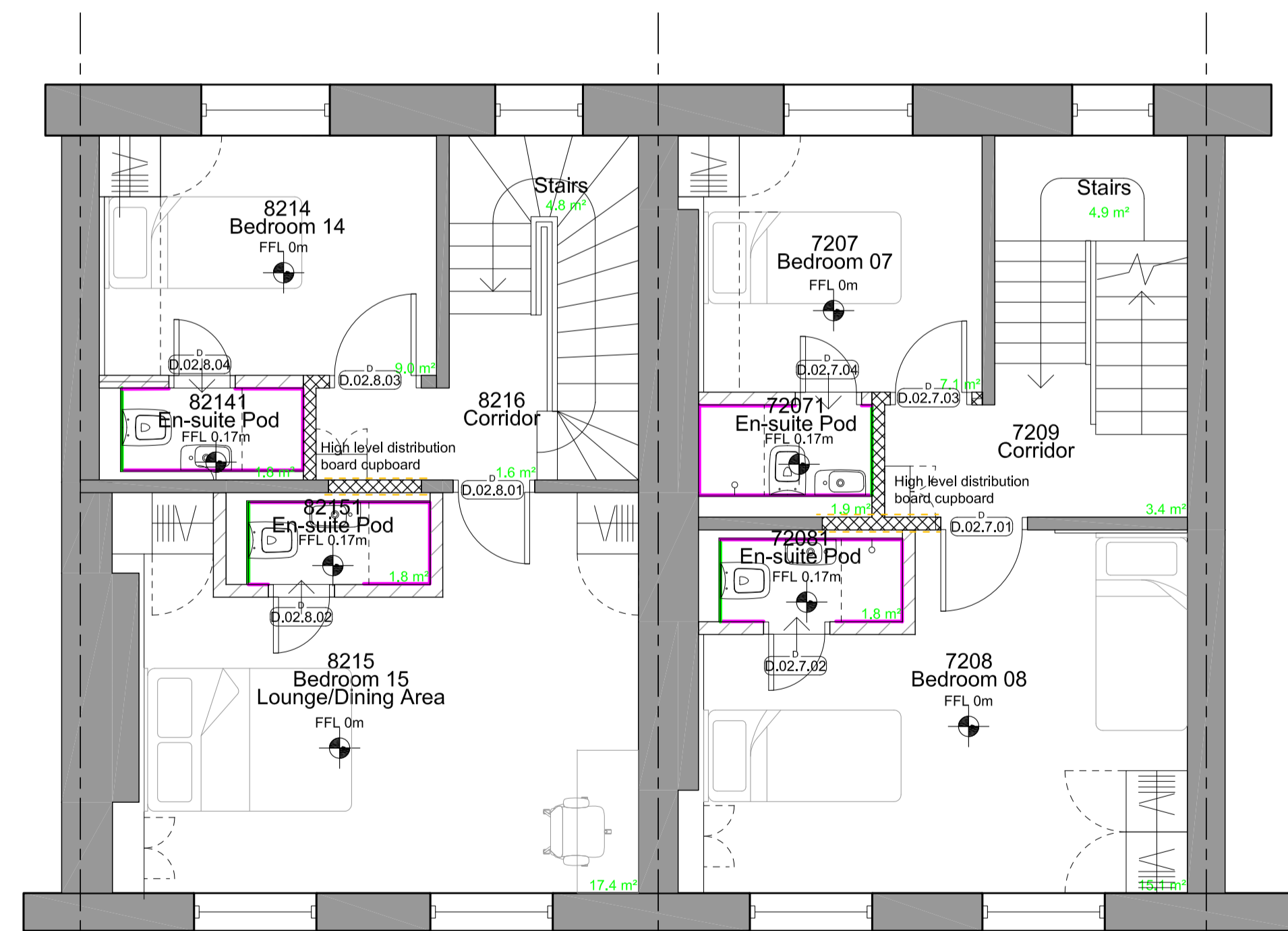
Project
 7-8 Sandwich Street GOSH Parents Accommodation

Drawing number	Revision
16032-AA-G20-02	F

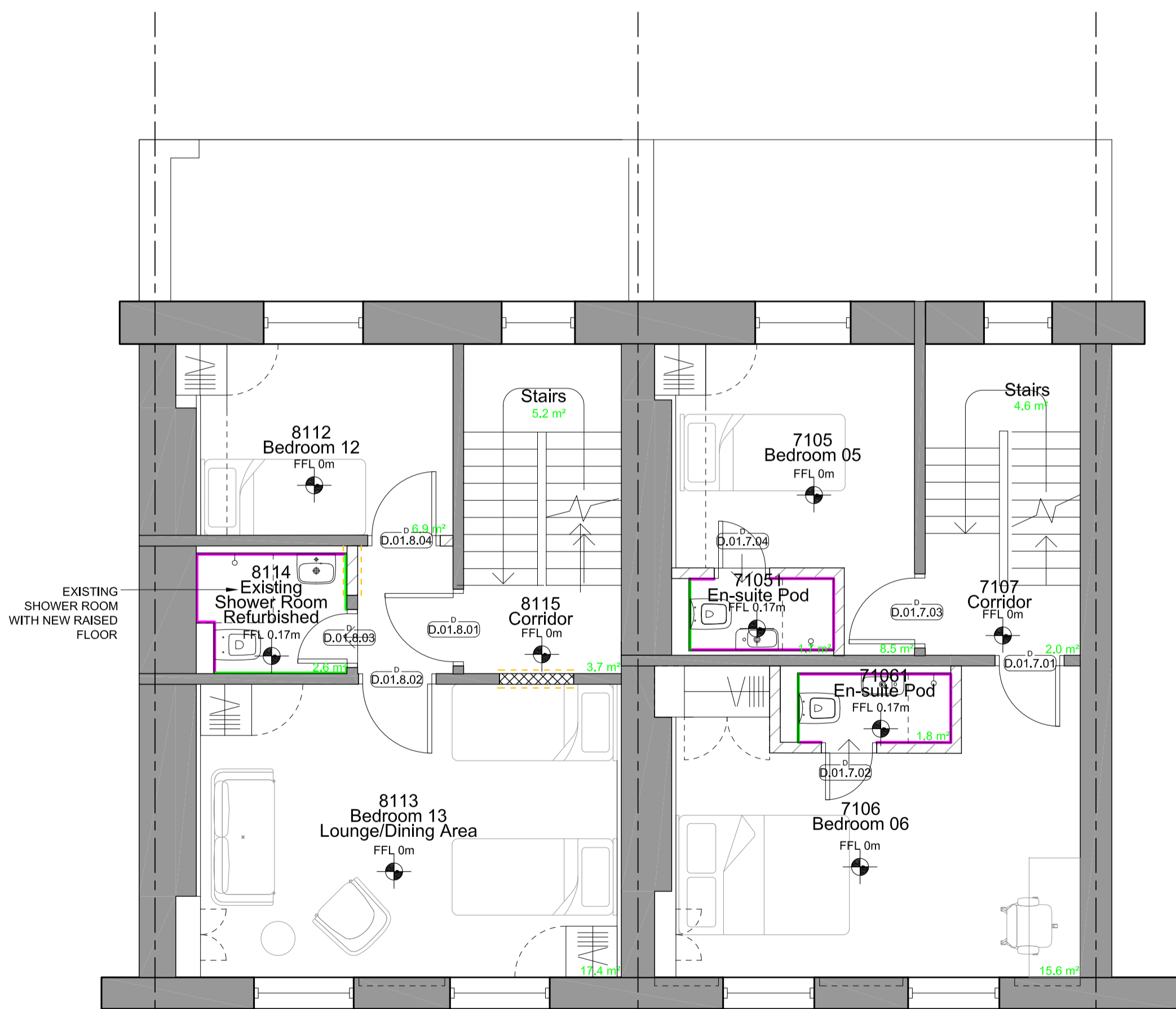
Status
 FOR APPROVAL



1 2 3
 Level 03



1 2 3
 Level 02



1 2 3
 Level 01

Level 01

Level 03

Level 02