


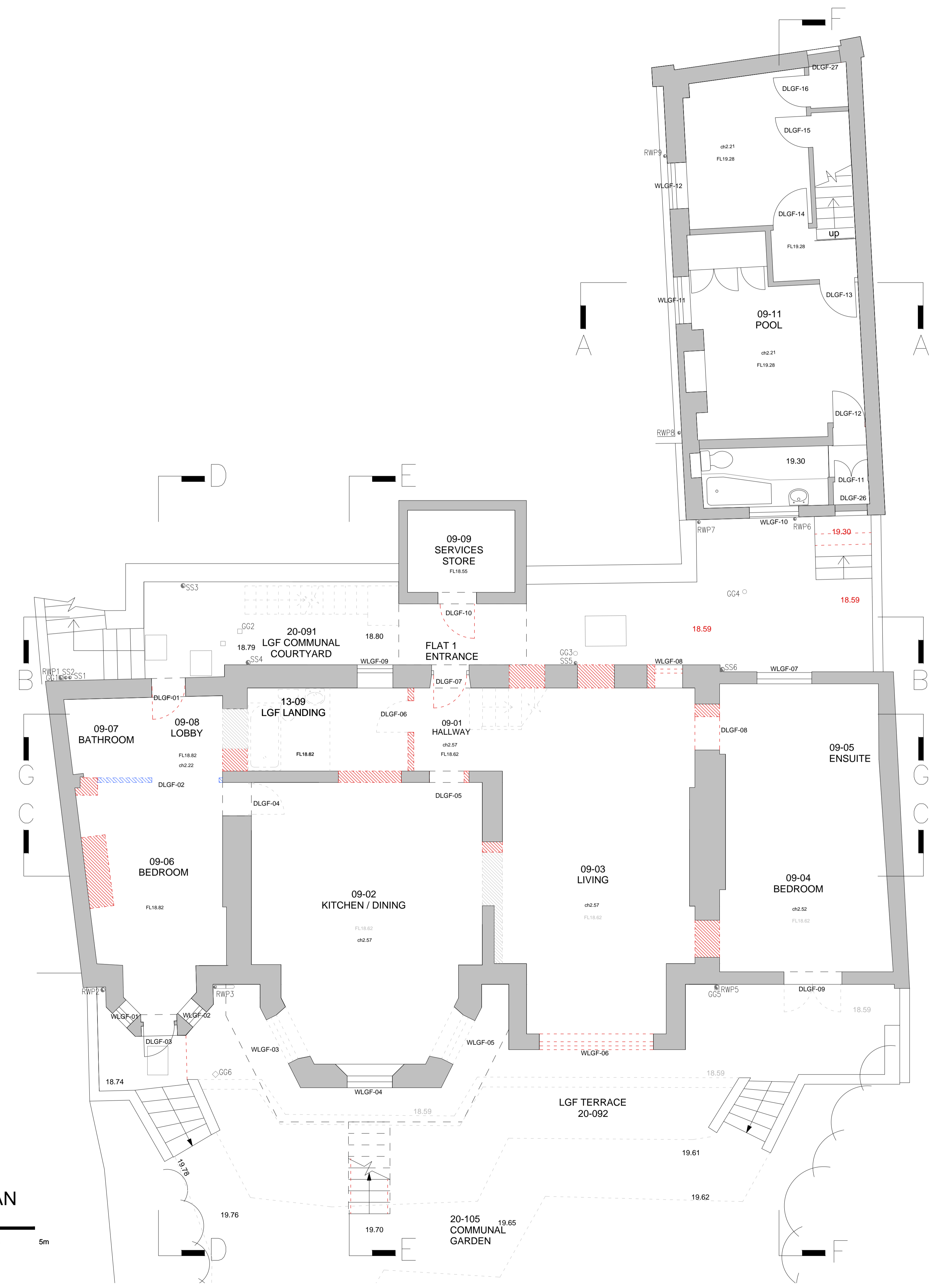


DO NOT SCALE FROM THIS DRAWING
 DRAWING TO BE READ IN CONJUNCTION WITH ALL OTHER ARCHITECTS AND ENGINEER'S CONTRACT DRAWING & SPECIFICATIONS. ANY DISCREPANCIES MUST BE BROUGHT TO THE ATTENTION OF THE ARCHITECT IMMEDIATELY.
 THE CONTRACTOR MUST VERIFY ALL DIMENSIONS BY SITE MEASUREMENT BEFORE ORDERING MATERIALS OR MANUFACTURING COMPONENTS.
 SUBSTITUTE MATERIALS & PRODUCTS TO THOSE NAMED WILL BE ACCEPTABLE IF PROVEN TO BE OF EQUAL OR HIGHER PERFORMANCE AND NOT IN CONFLICT WITH OTHER ELEMENTS.

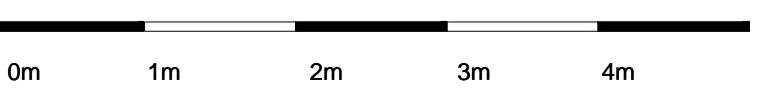
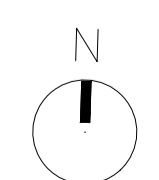
NOTES
KEY:

-  Consented Demolition associated with Application ref: 2013/5112/L & 2014/7932/P
-  Regularisation
-  Proposed demolition

Note:
 For windows and doors please refer to schedules.



LOWER GROUND PLAN

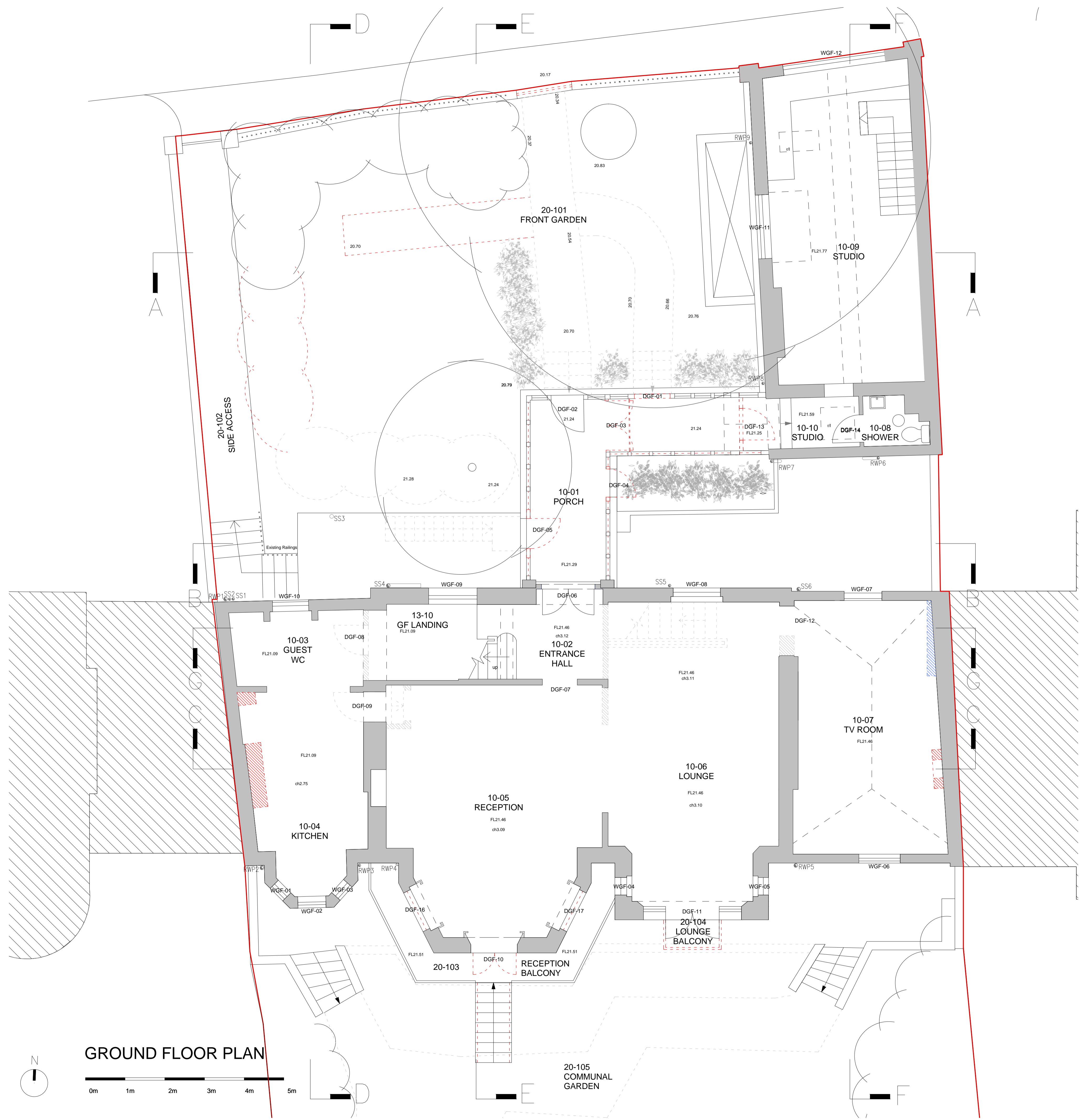



REV	DATE	DESCRIPTION
-	29.03.16	For Pre Application
A	06.05.16	General updates
B	18.11.16	For Planning
C	08.12.16	For Planning

FOR PLANNING

JOB TITLE		
Keats Grove Hampstead		
DRAWING TITLE		
Lower Ground Floor Plan Proposed Demolition		
JOB No	DWG No	REV
546	D01	C
DRAWN BY	SCALE (AT A1)	DATE
RFB	1:50 (1:100@A3)	Mar16

RICHARD GRIFFITHS ARCHITECTS
 5 Maidstone Mews, 72-76 Borough High Street, London SE1 1GN
 T +44(0)20 7357 8788 | F +44(0)20 7403 7887
 E admin@rgarchitects.com | www.rgarchitects.com



DO NOT SCALE FROM THIS DRAWING
 DRAWING TO BE READ IN CONJUNCTION WITH ALL OTHER ARCHITECTS AND ENGINEER'S CONTRACT DRAWING & SPECIFICATIONS. ANY DISCREPANCIES MUST BE BROUGHT TO THE ATTENTION OF THE ARCHITECT IMMEDIATELY.
 THE CONTRACTOR MUST VERIFY ALL DIMENSIONS BY SITE MEASUREMENT BEFORE ORDERING MATERIALS OR MANUFACTURING COMPONENTS.
 SUBSTITUTE MATERIALS & PRODUCTS TO THOSE NAMED WILL BE ACCEPTABLE IF PROVEN TO BE OF EQUAL OR HIGHER PERFORMANCE AND NOT IN CONFLICT WITH OTHER ELEMENTS.

NOTES
 KEY:
 [Red hatched box] Consented Demolition associated with Application ref: 2013/5112/L & 2014/7932/P
 [Blue hatched box] Regularisation
 [Red dashed box] Proposed demolition

Note:
 For windows and doors please refer to schedules.

GROUND FLOOR PLAN
 0m 1m 2m 3m 4m 5m

REV	DATE	DESCRIPTION
-	29.03.16	For Pre Application
A	06.05.16	General updates
B	18.11.16	For Planning

FOR PLANNING

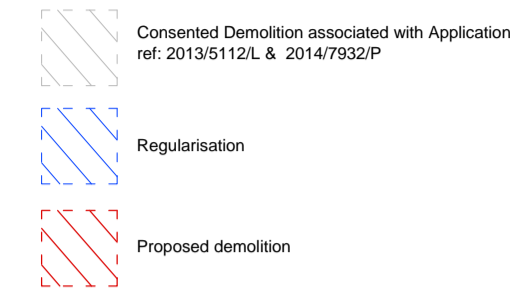
JOB TITLE
**Keats Grove
 Hampstead**

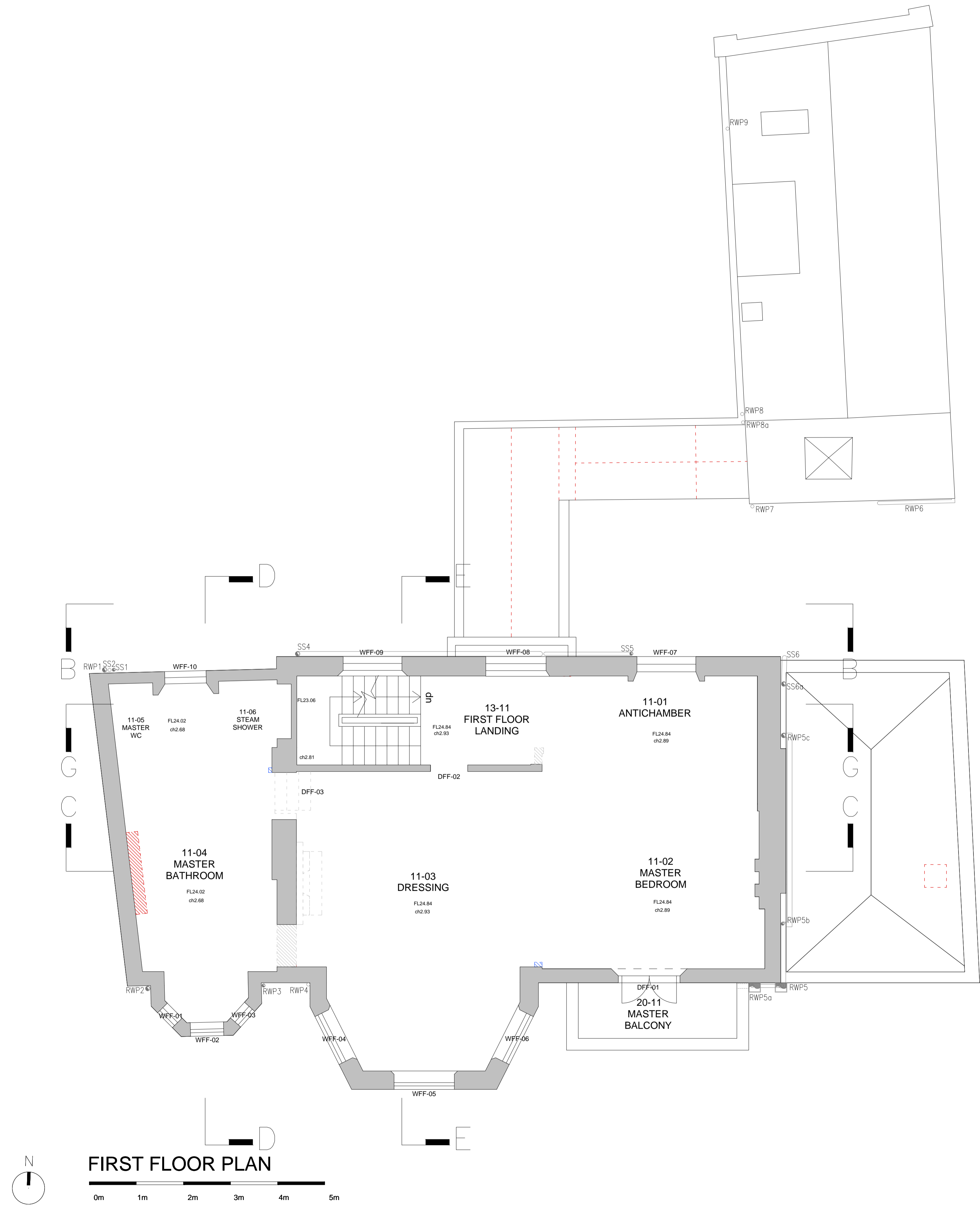
DRAWING TITLE
**Ground Floor Plan
 Proposed Demolition**

JOB No	DWG No	REV
546	D02	B
DRAWN BY	SCALE (AT A1)	DATE
RFB	1:50 (1:100@A3)	Mar16

RICHARD GRIFFITHS ARCHITECTS
 5 Maidstone Mews, 72-76 Borough High Street, London SE1 1GN
 T +44(0)20 7357 8788 | F +44(0)20 7403 7887
 E admin@rgarchitects.com | www.rgarchitects.com

DO NOT SCALE FROM THIS DRAWING
 DRAWING TO BE READ IN CONJUNCTION WITH ALL OTHER ARCHITECTS AND ENGINEER'S CONTRACT DRAWING & SPECIFICATIONS. ANY DISCREPANCIES MUST BE BROUGHT TO THE ATTENTION OF THE ARCHITECT IMMEDIATELY.
 THE CONTRACTOR MUST VERIFY ALL DIMENSIONS BY SITE MEASUREMENT BEFORE ORDERING MATERIALS OR MANUFACTURING COMPONENTS.
 SUBSTITUTE MATERIALS & PRODUCTS TO THOSE NAMED WILL BE ACCEPTABLE IF PROVEN TO BE OF EQUAL OR HIGHER PERFORMANCE AND NOT IN CONFLICT WITH OTHER ELEMENTS.

NOTES
KEY:

 Consented Demolition associated with Application ref: 2013/5112/L & 2014/7932/P
 Regularisation
 Proposed demolition
 Note:
 For windows and doors please refer to schedules.



REV	DATE	DESCRIPTION
-	29.03.16	For Pre Application
A	06.05.16	General updates
B	18.11.16	For Planning

FOR PLANNING

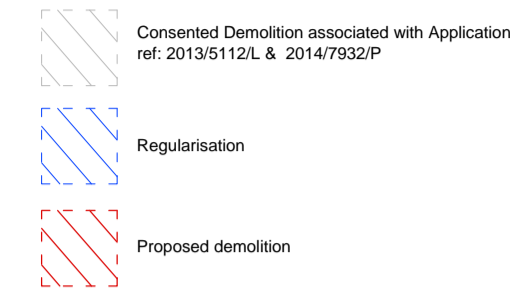
JOB TITLE
 Keats Grove
 Hampstead

DRAWING TITLE
 First Floor Plan
 Proposed Demolition

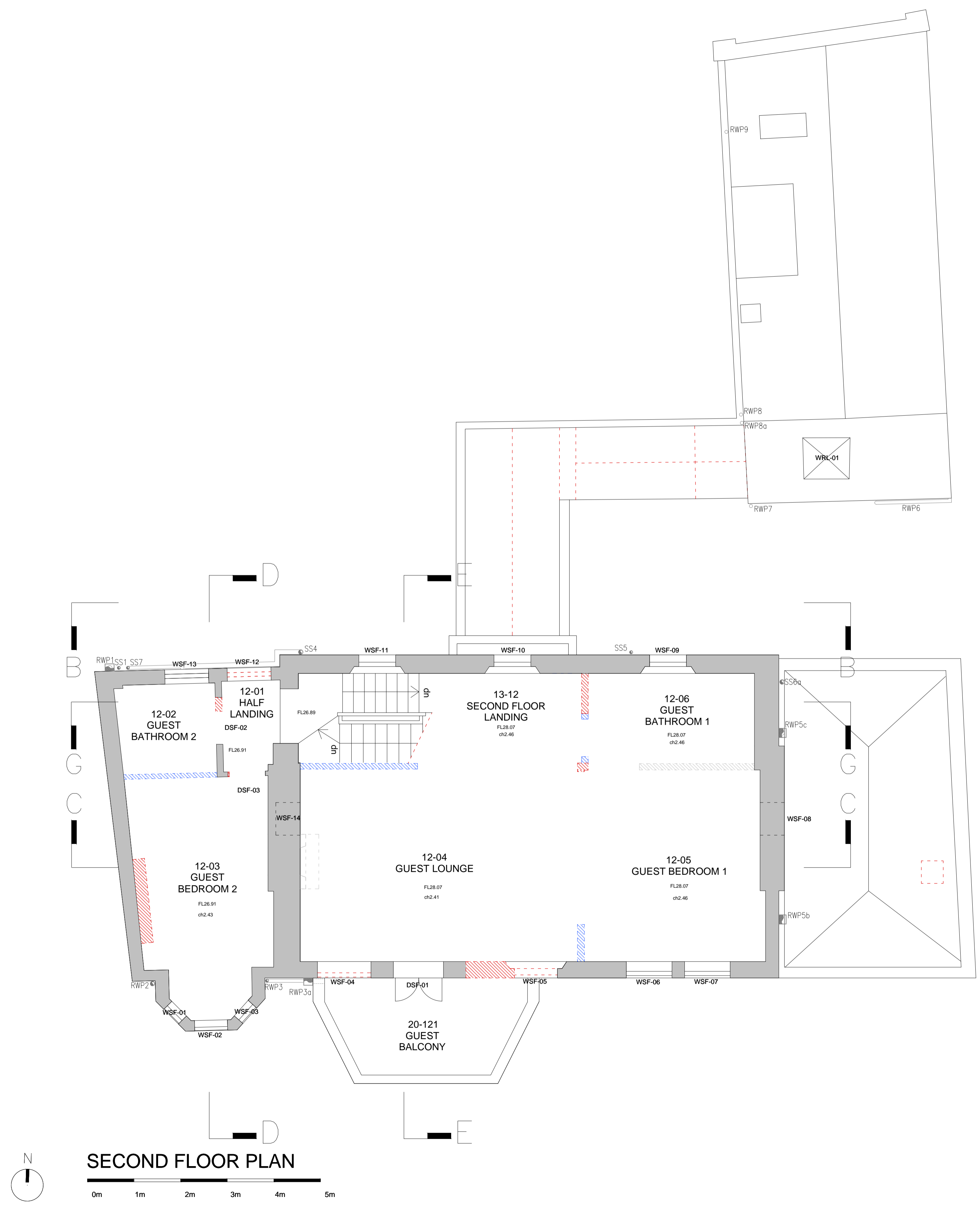
JOB No 546	DWG No D03	REV B
DRAWN BY RFB	SCALE (AT A1) 1:50 (1:100@A3)	DATE Mar16

RICHARD GRIFFITHS ARCHITECTS
 5 Maidstone Mews, 72-76 Borough High Street, London SE1 1GN
 T +44(0)20 7357 8788 | F +44(0)20 7403 7887
 E admin@rgarchitects.com | www.rgarchitects.com

DO NOT SCALE FROM THIS DRAWING
 DRAWING TO BE READ IN CONJUNCTION WITH ALL OTHER ARCHITECTS AND ENGINEER'S CONTRACT DRAWING & SPECIFICATIONS. ANY DISCREPANCIES MUST BE BROUGHT TO THE ATTENTION OF THE ARCHITECT IMMEDIATELY.
 THE CONTRACTOR MUST VERIFY ALL DIMENSIONS BY SITE MEASUREMENT BEFORE ORDERING MATERIALS OR MANUFACTURING COMPONENTS.
 SUBSTITUTE MATERIALS & PRODUCTS TO THOSE NAMED WILL BE ACCEPTABLE IF PROVEN TO BE OF EQUAL OR HIGHER PERFORMANCE AND NOT IN CONFLICT WITH OTHER ELEMENTS.

NOTES
KEY:

 Consented Demolition associated with Application ref: 2013/5112/L & 2014/7932/P
 Regularisation
 Proposed demolition

Note:
 For windows and doors please refer to schedules.



SECOND FLOOR PLAN
 0m 1m 2m 3m 4m 5m

REV	DATE	DESCRIPTION
-	29.03.16	For Pre Application
A	06.05.16	General updates
B	18.11.16	For Planning

FOR PLANNING

JOB TITLE
 Keats Grove
 Hampstead

DRAWING TITLE
 Second Floor Plan
 Proposed Demolition

JOB No	DWG No	REV
546	D04	B

DRAWN BY	SCALE (AT A1)	DATE
RFB	1:50 (1:100@A3)	Mar16

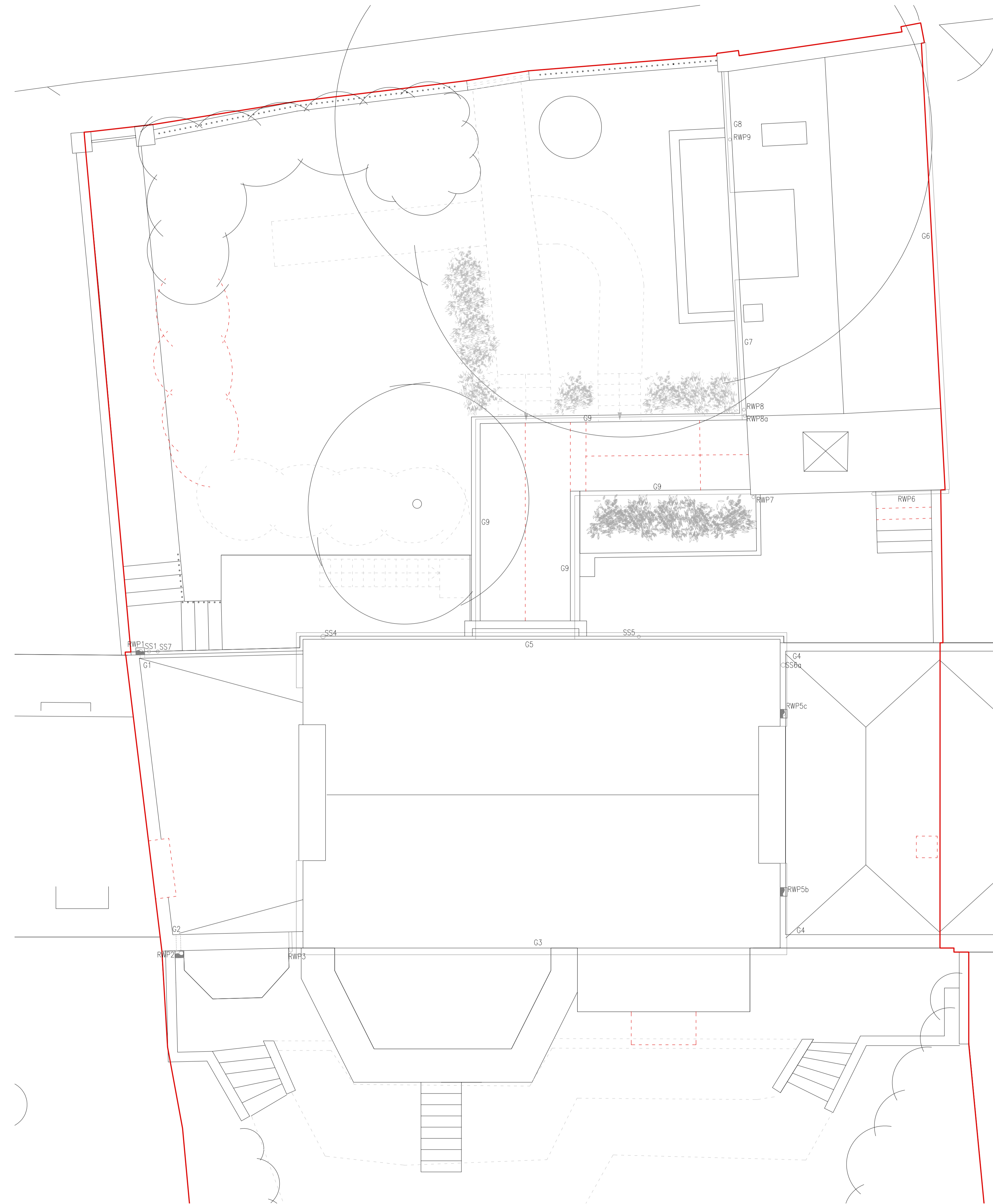
RICHARD GRIFFITHS ARCHITECTS
 5 Maidstone Mews, 72-76 Borough High Street, London SE1 1GN
 T +44(0)20 7357 8788 | F +44(0)20 7403 7887
 E admin@rgarchitects.com | www.rgarchitects.com

DO NOT SCALE FROM THIS DRAWING
 DRAWING TO BE READ IN CONJUNCTION WITH ALL OTHER ARCHITECTS AND ENGINEER'S CONTRACT DRAWING & SPECIFICATIONS. ANY DISCREPANCIES MUST BE BROUGHT TO THE ATTENTION OF THE ARCHITECT IMMEDIATELY.
 THE CONTRACTOR MUST VERIFY ALL DIMENSIONS BY SITE MEASUREMENT BEFORE ORDERING MATERIALS OR MANUFACTURING COMPONENTS.
 SUBSTITUTE MATERIALS & PRODUCTS TO THOSE NAMED WILL BE ACCEPTABLE IF PROVEN TO BE OF EQUAL OR HIGHER PERFORMANCE AND NOT IN CONFLICT WITH OTHER ELEMENTS.

NOTES
 KEY:

-  Site Ownership
-  Consented Demolition associated with Application ref: 2013/5112/L & 2014/792/P
-  Regularisation
-  Proposed demolition

Note:
 For windows and doors please refer to schedules.



REV	DATE	DESCRIPTION
-	29.03.16	For Pre Application
A	06.05.16	General updates
B	18.11.16	For Planning

FOR PLANNING

JOB TITLE
**Keats Grove
 Hampstead**

DRAWING TITLE
**Roof Plan
 Proposed Demolition**

JOB No	DWG No	REV
546	D05	B
DRAWN BY	SCALE (AT A1)	DATE
JMc	1:50 (1:100@A3)	Mar16

RICHARD GRIFFITHS ARCHITECTS
 5 Maidstone Mews, 72-76 Borough High Street, London SE1 1GN
 T +44(0)20 7357 8788 | F +44(0)20 7403 7887
 E admin@rgarchitects.com | www.rgarchitects.com

DO NOT SCALE FROM THIS DRAWING

DRAWING TO BE READ IN CONJUNCTION WITH ALL OTHER ARCHITECTS AND ENGINEER'S CONTRACT DRAWING & SPECIFICATIONS. ANY DISCREPANCIES MUST BE BROUGHT TO THE ATTENTION OF THE ARCHITECT IMMEDIATELY. THE CONTRACTOR MUST VERIFY ALL DIMENSIONS BY SITE MEASUREMENT BEFORE ORDERING MATERIALS OR MANUFACTURING COMPONENTS. SUBSTITUTE MATERIALS & PRODUCTS TO THOSE NAMED WILL BE ACCEPTABLE IF PROVEN TO BE OF EQUAL OR HIGHER PERFORMANCE AND NOT IN CONFLICT WITH OTHER ELEMENTS.

- NOTES
KEY:
- Consented Demolition associated with Application ref: 2013/5112/L & 2014/7932/P
 - Regularisation
 - Proposed demolition

Note:
For windows and doors please refer to schedules.



17.0m DATUM
SECTION A-A

REV	DATE	DESCRIPTION
-	29.03.16	For Pre Application
A	06.05.16	General updates
B	18.11.16	For Planning

FOR PLANNING

JOB TITLE
Keats Grove
Hampstead

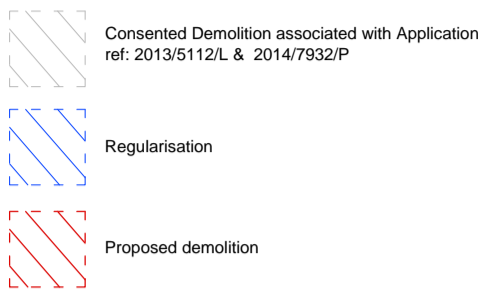
DRAWING TITLE
Section AA
Proposed Demolition

JOB No	DWG No	REV
546	D10	B

DRAWN BY	SCALE (AT A1)	DATE
RFB	1:50 (1:100@A3)	Mar16

RICHARD GRIFFITHS ARCHITECTS
5 Maidstone Mews, 72-76 Borough High Street, London SE1 1GN
T +44(0)20 7357 8788 | F +44(0)20 7403 7887
E admin@rgarchitects.com | www.rgarchitects.com

DO NOT SCALE FROM THIS DRAWING
 DRAWING TO BE READ IN CONJUNCTION WITH ALL OTHER ARCHITECTS
 AND ENGINEER'S CONTRACT DRAWING & SPECIFICATIONS.
 ANY DISCREPANCIES MUST BE BROUGHT TO THE ATTENTION OF THE
 ARCHITECT IMMEDIATELY.
 THE CONTRACTOR MUST VERIFY ALL DIMENSIONS BY SITE
 MEASUREMENT BEFORE ORDERING MATERIALS OR MANUFACTURING
 COMPONENTS.
 SUBSTITUTE MATERIALS & PRODUCTS TO THOSE NAMED WILL BE
 ACCEPTABLE IF PROVEN TO BE OF EQUAL OR HIGHER PERFORMANCE
 AND NOT IN CONFLICT WITH OTHER ELEMENTS.

NOTES
 KEY:

 Consented Demolition associated with Application
 ref: 2013/5112/L & 2014/7932/P
 Regularisation
 Proposed demolition

Note:
 For windows and doors please refer to schedules.



17.0m DATUM

SECTION B-B




REV	DATE	DESCRIPTION
-	29.03.16	For Pre Application
A	06.05.16	General updates
B	18.11.16	For Planning
C	08.12.16	For Planning

FOR PLANNING

JOB TITLE
**Keats Grove
 Hampstead**
 DRAWING TITLE
**Section BB
 Proposed Demolition**
 JOB No: 546 DWG No: D11 REV: C
 DRAWN BY: RFB SCALE (AT A1): 1:50 (1:100@A3) DATE: Mar16

RICHARD GRIFFITHS ARCHITECTS
 5 Maidstone Mews, 72-76 Borough High Street, London SE1 1GN
 T +44(0)20 7357 8788 | F +44(0)20 7403 7887
 E admin@rgarchitects.com | www.rgarchitects.com

DO NOT SCALE FROM THIS DRAWING
 DRAWING TO BE READ IN CONJUNCTION WITH ALL OTHER ARCHITECTS AND ENGINEER'S CONTRACT DRAWING & SPECIFICATIONS. ANY DISCREPANCIES MUST BE BROUGHT TO THE ATTENTION OF THE ARCHITECT IMMEDIATELY.
 THE CONTRACTOR MUST VERIFY ALL DIMENSIONS BY SITE MEASUREMENT BEFORE ORDERING MATERIALS OR MANUFACTURING COMPONENTS.
 SUBSTITUTE MATERIALS & PRODUCTS TO THOSE NAMED WILL BE ACCEPTABLE IF PROVEN TO BE OF EQUAL OR HIGHER PERFORMANCE AND NOT IN CONFLICT WITH OTHER ELEMENTS.

- NOTES
 KEY:
-  Consented Demolition associated with Application ref: 2013/5112/L & 2014/7932/P
 -  Regularisation
 -  Proposed demolition

Note:
 For windows and doors please refer to schedules.



SECTION C-C

REV	DATE	DESCRIPTION
-	29.03.16	For Pre Application
A	06.05.16	General updates
B	18.11.16	For Planning

FOR PLANNING

JOB TITLE
Keats Grove
Hampstead

DRAWING TITLE
Section CC
Proposed Demolition

JOB No	DWG No	REV
546	D12	B
DRAWN BY	SCALE (AT A1)	DATE
RFB	1:50 (1:100@A3)	Mar16

RICHARD GRIFFITHS ARCHITECTS
 5 Maidstone Mews, 72-76 Borough High Street, London SE1 1GN
 T +44(0)20 7357 8788 | F +44(0)20 7403 7887
 E admin@rgarchitects.com | www.rgarchitects.com



KEATS GROVE

17.0m DATUM



SECTION D-D

DO NOT SCALE FROM THIS DRAWING

DRAWING TO BE READ IN CONJUNCTION WITH ALL OTHER ARCHITECTS AND ENGINEER'S CONTRACT DRAWING & SPECIFICATIONS. ANY DISCREPANCIES MUST BE BROUGHT TO THE ATTENTION OF THE ARCHITECT IMMEDIATELY. THE CONTRACTOR MUST VERIFY ALL DIMENSIONS BY SITE MEASUREMENT BEFORE ORDERING MATERIALS OR MANUFACTURING COMPONENTS. SUBSTITUTE MATERIALS & PRODUCTS TO THOSE NAMED WILL BE ACCEPTABLE IF PROVEN TO BE OF EQUAL OR HIGHER PERFORMANCE AND NOT IN CONFLICT WITH OTHER ELEMENTS.

- NOTES
KEY:
- Consented Demolition associated with Application ref: 2013/5112/L & 2014/7932/P
 - Regularisation
 - Proposed demolition

Note:
For windows and doors please refer to schedules.

REV	DATE	DESCRIPTION
-	29.03.16	For Pre Application
A	06.05.16	General updates
B	18.11.16	For Planning

FOR PLANNING




JOB TITLE
Keats Grove
Hampstead

DRAWING TITLE
Section DD
Proposed Demolition

JOB No	DWG No	REV
546	D13	B
DRAWN BY	SCALE (AT A1)	DATE
RFB	1:50 (1:100@A3)	Mar16

RICHARD GRIFFITHS ARCHITECTS
5 Maidstone Mews, 72-76 Borough High Street, London SE1 1GN
T +44(0)20 7357 8788 | F +44(0)20 7403 7887
E admin@rgarchitects.com | www.rgarchitects.com

DO NOT SCALE FROM THIS DRAWING
 DRAWING TO BE READ IN CONJUNCTION WITH ALL OTHER ARCHITECTS AND ENGINEER'S CONTRACT DRAWING & SPECIFICATIONS. ANY DISCREPANCIES MUST BE BROUGHT TO THE ATTENTION OF THE ARCHITECT IMMEDIATELY.
 THE CONTRACTOR MUST VERIFY ALL DIMENSIONS BY SITE MEASUREMENT BEFORE ORDERING MATERIALS OR MANUFACTURING COMPONENTS.
 SUBSTITUTE MATERIALS & PRODUCTS TO THOSE NAMED WILL BE ACCEPTABLE IF PROVEN TO BE OF EQUAL OR HIGHER PERFORMANCE AND NOT IN CONFLICT WITH OTHER ELEMENTS.

- NOTES
 KEY:
-  Consented Demolition associated with Application ref: 2013/5112/L & 2014/7932/P
 -  Regularisation
 -  Proposed demolition

Note:
 For windows and doors please refer to schedules.



17.0m DATUM
 0m 1m 2m 3m 4m 5m

SECTION E-E

REV	DATE	DESCRIPTION
-	29.03.16	For Pre Application
A	06.05.16	General updates
B	18.11.16	For Planning




FOR PLANNING

JOB TITLE		
Keats Grove		
Hampstead		
DRAWING TITLE		
Section EE		
Proposed Demolition		
JOB No	DWG No	REV
546	D14	B
DRAWN BY	SCALE (AT A1)	DATE
RFB	1:50 (1:100@A3)	Mar16

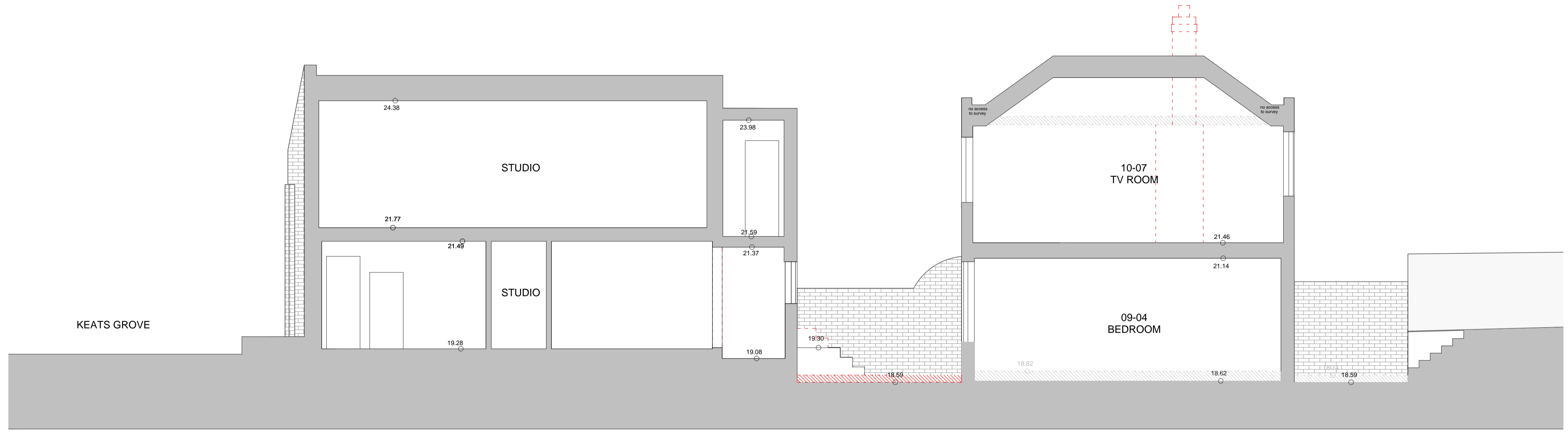
RICHARD GRIFFITHS ARCHITECTS
 5 Maidstone Mews, 72-76 Borough High Street, London SE1 1GN
 T +44(0)20 7357 8788 | F +44(0)20 7403 7887
 E admin@rgarchitects.com | www.rgarchitects.com

DO NOT SCALE FROM THIS DRAWING

DRAWING TO BE READ IN CONJUNCTION WITH ALL OTHER ARCHITECTS AND ENGINEER'S CONTRACT DRAWING & SPECIFICATIONS. ANY DISCREPANCIES MUST BE BROUGHT TO THE ATTENTION OF THE ARCHITECT IMMEDIATELY. THE CONTRACTOR MUST VERIFY ALL DIMENSIONS BY SITE MEASUREMENT BEFORE ORDERING MATERIALS OR MANUFACTURING COMPONENTS. SUBSTITUTE MATERIALS & PRODUCTS TO THOSE NAMED WILL BE ACCEPTABLE IF PROVEN TO BE OF EQUAL OR HIGHER PERFORMANCE AND NOT IN CONFLICT WITH OTHER ELEMENTS.

- NOTES
KEY:
-  Consented Demolition associated with Application ref: 2013/5112/L & 2014/7932/P
 -  Regularisation
 -  Proposed demolition

Note:
For windows and doors please refer to schedules.



17.0m DATUM
SECTION F-F

REV	DATE	DESCRIPTION
-	29.03.16	For Pre Application
A	06.05.16	General updates
B	18.11.16	For Planning

FOR PLANNING

JOB TITLE
**Keats Grove
Hampstead**




DRAWING TITLE
**Section FF
Proposed Demolition**

JOB No	DWG No	REV
546	D15	B
DRAWN BY	SCALE (AT A1)	DATE
RFB	1:50 (1:100@A3)	Mar16

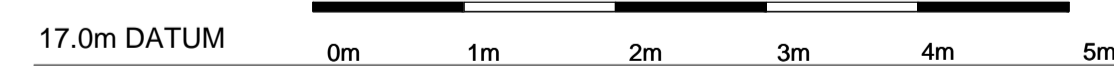
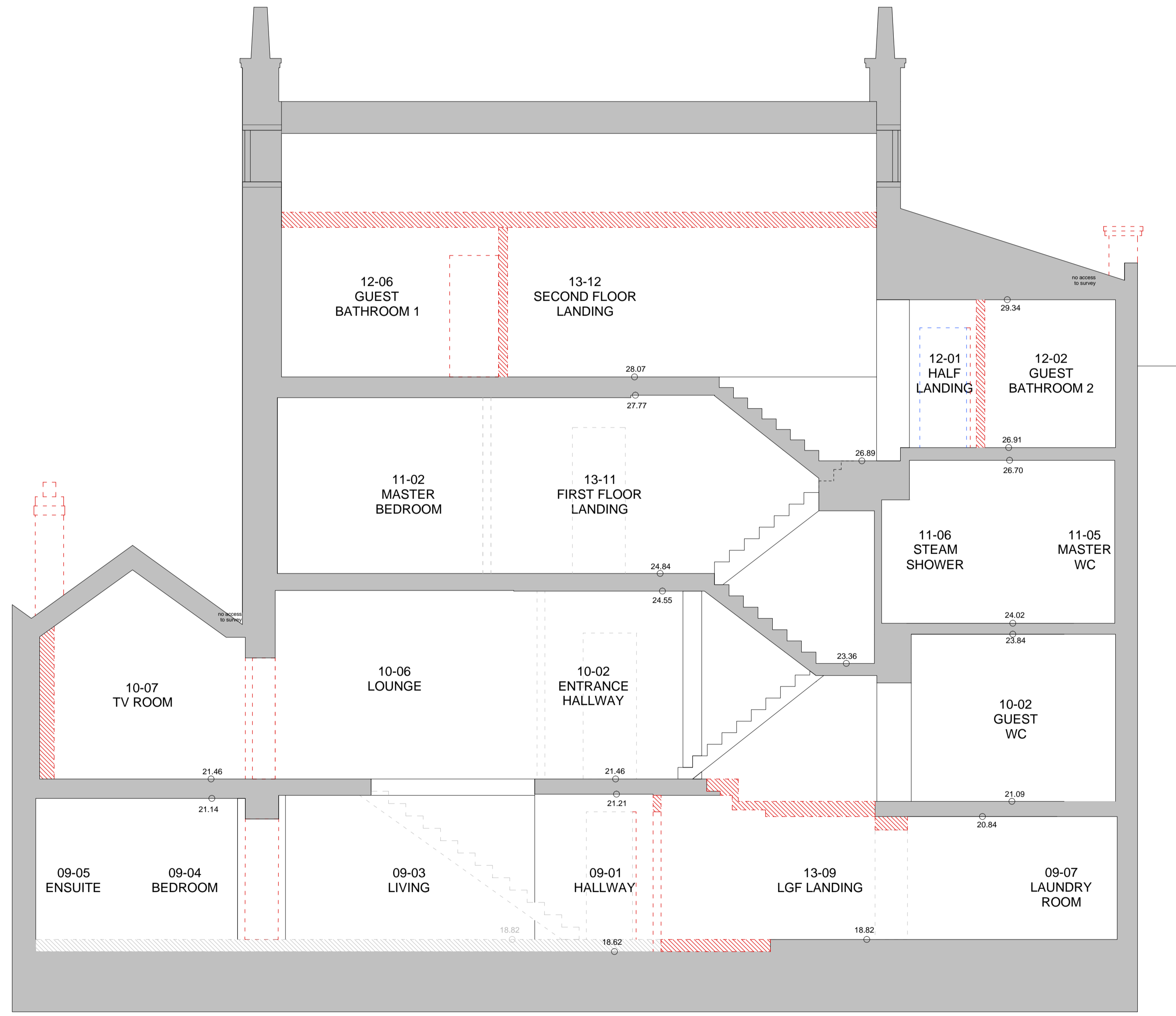
RICHARD GRIFFITHS ARCHITECTS
 5 Maidstone Mews, 72-76 Borough High Street, London SE1 1GN
 T +44(0)20 7357 8788 | F +44(0)20 7403 7887
 E admin@rgarchitects.com | www.rgarchitects.com

DO NOT SCALE FROM THIS DRAWING
 DRAWING TO BE READ IN CONJUNCTION WITH ALL OTHER ARCHITECTS AND ENGINEER'S CONTRACT DRAWING & SPECIFICATIONS. ANY DISCREPANCIES MUST BE BROUGHT TO THE ATTENTION OF THE ARCHITECT IMMEDIATELY.
 THE CONTRACTOR MUST VERIFY ALL DIMENSIONS BY SITE MEASUREMENT BEFORE ORDERING MATERIALS OR MANUFACTURING COMPONENTS.
 SUBSTITUTE MATERIALS & PRODUCTS TO THOSE NAMED WILL BE ACCEPTABLE IF PROVEN TO BE OF EQUAL OR HIGHER PERFORMANCE AND NOT IN CONFLICT WITH OTHER ELEMENTS.

NOTES
KEY:

-  Consented Demolition associated with Application ref: 2013/5112/L & 2014/7932/P
-  Regularisation
-  Proposed demolition

Note:
 For windows and doors please refer to schedules.



SECTION G-G

REV	DATE	DESCRIPTION
-	29.03.16	For Pre Application
A	06.05.16	General updates
B	18.11.16	For Planning

FOR PLANNING

JOB TITLE
 Keats Grove
 Hampstead

DRAWING TITLE
 Section GG
 Proposed Demolition

JOB No	DWG No	REV
546	D16	B

DRAWN BY	SCALE (AT A1)	DATE
RFB	1:50 (1:100@A3)	Mar16




RICHARD GRIFFITHS ARCHITECTS
 5 Maidstone Mews, 72-76 Borough High Street, London SE1 1GN
 T +44(0)20 7357 8788 | F +44(0)20 7403 7887
 E admin@rgarchitects.com | www.rgarchitects.com

DO NOT SCALE FROM THIS DRAWING

DRAWING TO BE READ IN CONJUNCTION WITH ALL OTHER ARCHITECTS AND ENGINEER'S CONTRACT DRAWING & SPECIFICATIONS. ANY DISCREPANCIES MUST BE BROUGHT TO THE ATTENTION OF THE ARCHITECT IMMEDIATELY. THE CONTRACTOR MUST VERIFY ALL DIMENSIONS BY SITE MEASUREMENT BEFORE ORDERING MATERIALS OR MANUFACTURING COMPONENTS. SUBSTITUTE MATERIALS & PRODUCTS TO THOSE NAMED WILL BE ACCEPTABLE IF PROVEN TO BE OF EQUAL OR HIGHER PERFORMANCE AND NOT IN CONFLICT WITH OTHER ELEMENTS.

NOTES

KEY:

-  Consented Demolition associated with Application ref: 2013/5112/L & 2014/7932/P
-  Regularisation
-  Proposed demolition

Note:
For windows and doors please refer to schedules.



17.0m DATUM

NORTH - STREET ELEVATION

0m 1m 2m 3m 4m 5m

REV	DATE	DESCRIPTION
-	29.03.16	For Pre Application
A	06.05.16	General updates
B	18.11.16	For Planning

FOR PLANNING

JOB TITLE

Keats Grove

Hampstead

North Elevation

Proposed Demolition

JOB No

546

DWG No

D20

REV

B

DRAWN BY

RFB

SCALE (AT A1)

1:50 (1:100@A3)

DATE

Mar16

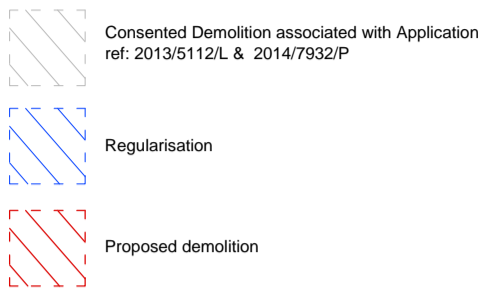
RICHARD GRIFFITHS ARCHITECTS

5 Maidstone Mews, 72-76 Borough High Street, London SE1 1GN

T +44(0)20 7357 8788 | F +44(0)20 7403 7887

E admin@rgarchitects.com | www.rgarchitects.com

DO NOT SCALE FROM THIS DRAWING
 DRAWING TO BE READ IN CONJUNCTION WITH ALL OTHER ARCHITECTS AND ENGINEER'S CONTRACT DRAWING & SPECIFICATIONS. ANY DISCREPANCIES MUST BE BROUGHT TO THE ATTENTION OF THE ARCHITECT IMMEDIATELY.
 THE CONTRACTOR MUST VERIFY ALL DIMENSIONS BY SITE MEASUREMENT BEFORE ORDERING MATERIALS OR MANUFACTURING COMPONENTS.
 SUBSTITUTE MATERIALS & PRODUCTS TO THOSE NAMED WILL BE ACCEPTABLE IF PROVEN TO BE OF EQUAL OR HIGHER PERFORMANCE AND NOT IN CONFLICT WITH OTHER ELEMENTS.

NOTES
KEY:

 Consented Demolition associated with Application ref: 2013/5112/L & 2014/7932/P
 Regularisation
 Proposed demolition

Note:
 For windows and doors please refer to schedules.



KEATS GROVE

0m 1m 2m 3m 4m 5m 17.0m DATUM

EAST ELEVATION

REV	DATE	DESCRIPTION
-	29.03.16	For Pre Application
A	06.05.16	General updates
B	18.11.16	For Planning

FOR PLANNING

JOB TITLE
 Keats Grove
 Hampstead

DRAWING TITLE
 East Elevation
 Proposed Demolition

JOB No	DWG No	REV
546	D21	B

DRAWN BY	SCALE (AT A1)	DATE
RFB	1:50 (1:100@A3)	Mar16

RICHARD GRIFFITHS ARCHITECTS
 5 Maidstone Mews, 72-76 Borough High Street, London SE1 1GN
 T +44(0)20 7357 8788 | F +44(0)20 7403 7887
 E admin@rgarchitects.com | www.rgarchitects.com

DO NOT SCALE FROM THIS DRAWING

DRAWING TO BE READ IN CONJUNCTION WITH ALL OTHER ARCHITECTS AND ENGINEER'S CONTRACT DRAWING & SPECIFICATIONS. ANY DISCREPANCIES MUST BE BROUGHT TO THE ATTENTION OF THE ARCHITECT IMMEDIATELY.
THE CONTRACTOR MUST VERIFY ALL DIMENSIONS BY SITE MEASUREMENT BEFORE ORDERING MATERIALS OR MANUFACTURING COMPONENTS.
SUBSTITUTE MATERIALS & PRODUCTS TO THOSE NAMED WILL BE ACCEPTABLE IF PROVEN TO BE OF EQUAL OR HIGHER PERFORMANCE AND NOT IN CONFLICT WITH OTHER ELEMENTS.

- NOTES
KEY:
- Consented Demolition associated with Application ref: 2013/5112/L & 2014/7932/P
 - Regularisation
 - Proposed demolition

Note:
For windows and doors please refer to schedules.



17.0m DATUM

SOUTH ELEVATION

0m 1m 2m 3m 4m 5m

REV	DATE	DESCRIPTION
-	29.03.16	For Pre Application
A	06.05.16	General updates
B	18.11.16	For Planning

FOR PLANNING

JOB TITLE		
Keats Grove Hampstead		
DRAWING TITLE		
South Elevation Proposed Demolition		
JOB No	DWG No	REV
546	D22	B
DRAWN BY	SCALE (AT A1)	DATE
RFB	1:50 (1:100@A3)	Mar16

RICHARD GRIFFITHS ARCHITECTS
5 Maidstone Mews, 72-76 Borough High Street, London SE1 1GN
T +44(0)20 7357 8788 | F +44(0)20 7403 7887
E admin@rgarchitects.com | www.rgarchitects.com



KEATS GROVE

17.0m DATUM

0m 1m 2m 3m 4m 5m




WEST ELEVATION

DO NOT SCALE FROM THIS DRAWING

DRAWING TO BE READ IN CONJUNCTION WITH ALL OTHER ARCHITECTS AND ENGINEER'S CONTRACT DRAWING & SPECIFICATIONS. ANY DISCREPANCIES MUST BE BROUGHT TO THE ATTENTION OF THE ARCHITECT IMMEDIATELY.
THE CONTRACTOR MUST VERIFY ALL DIMENSIONS BY SITE MEASUREMENT BEFORE ORDERING MATERIALS OR MANUFACTURING COMPONENTS.
SUBSTITUTE MATERIALS & PRODUCTS TO THOSE NAMED WILL BE ACCEPTABLE IF PROVEN TO BE OF EQUAL OR HIGHER PERFORMANCE AND NOT IN CONFLICT WITH OTHER ELEMENTS.

NOTES

KEY:

-  Consented Demolition associated with Application ref: 2013/5112/L & 2014/7932/P
-  Regularisation
-  Proposed demolition

Note:

For windows and doors please refer to schedules.

REV	DATE	DESCRIPTION
-	29.03.16	For Pre Application
A	06.05.16	General updates
B	18.11.16	For Planning

FOR PLANNING

JOB TITLE		
Keats Grove		
Hampstead		
DRAWING TITLE		
West Elevation		
Proposed Demolition		
JOB No	DWG No	REV
546	D23	B
DRAWN BY	SCALE (AT A1)	DATE
RFB	1:50 (1:100@A3)	Mar16

RICHARD GRIFFITHS ARCHITECTS
5 Maidstone Mews, 72-76 Borough High Street, London SE1 1GN
T +44(0)20 7357 8788 | F +44(0)20 7403 7887
E admin@rgarchitects.com | www.rgarchitects.com