

This drawing and design is for use solely in connection with the project described below. The drawing and design is the copyright of Avanti Architects Ltd. and must not be re-issued, loaned or copied without written consent. All dimensions and setting out to be checked on site before construction. This drawing is to be read in conjunction with all other information relevant to the project. Any apparent discrepancy is to be brought to the attention of Avanti Architects Ltd. Do not scale from this drawing.

**Notes**

- KEY:
- TO BE READ IN CONJUNCTION WITH
  - a. SPECIFICATION
  - b. GA33 SERIES
  - c. INTERIOR SPECIALIST JOINERY REPORT 16032-AA-07-G4-RPT01
  - d. INTERIOR SANITARY FIXTURES REPORT 16032-AA-07-G4-RPT02

- EXISTING PARTITION
- NEW PARTITION see specification K10/125A
- NEW PARTITION FIRED RATED 60MINS see specification K10/125A
- NEW PARTITION THICKNESS TO MATCH EXISTING see specification K10/125B
- MOISTURE RESISTANT PLASTERBOARD see specification K10/125A & K10/155A
- WATER RESISTANT WEDI BOARD see specification K10/155A
- FINISHED FLOOR LEVEL TO BE CONFIRMED ON SITE
- GROUP 2 FURNITURE
- NOTICE BOARD see specification N10/155A

FOR APPROVAL			
Date	By	Description	
22/02/16	GD	north point & scale bar added	DF
06/02/16	GD	Amendments clouded	DF
06/02/16	GD	Amendments clouded	DF
06/02/16	GD	Tender	DF
30/11/16	GD	Issued for billing	DF
25/11/16	GD	Drawing reformatted, 16032-GA-G20-LG, 00 & 03 omitted	DF
17/11/16	GD	Description	DF

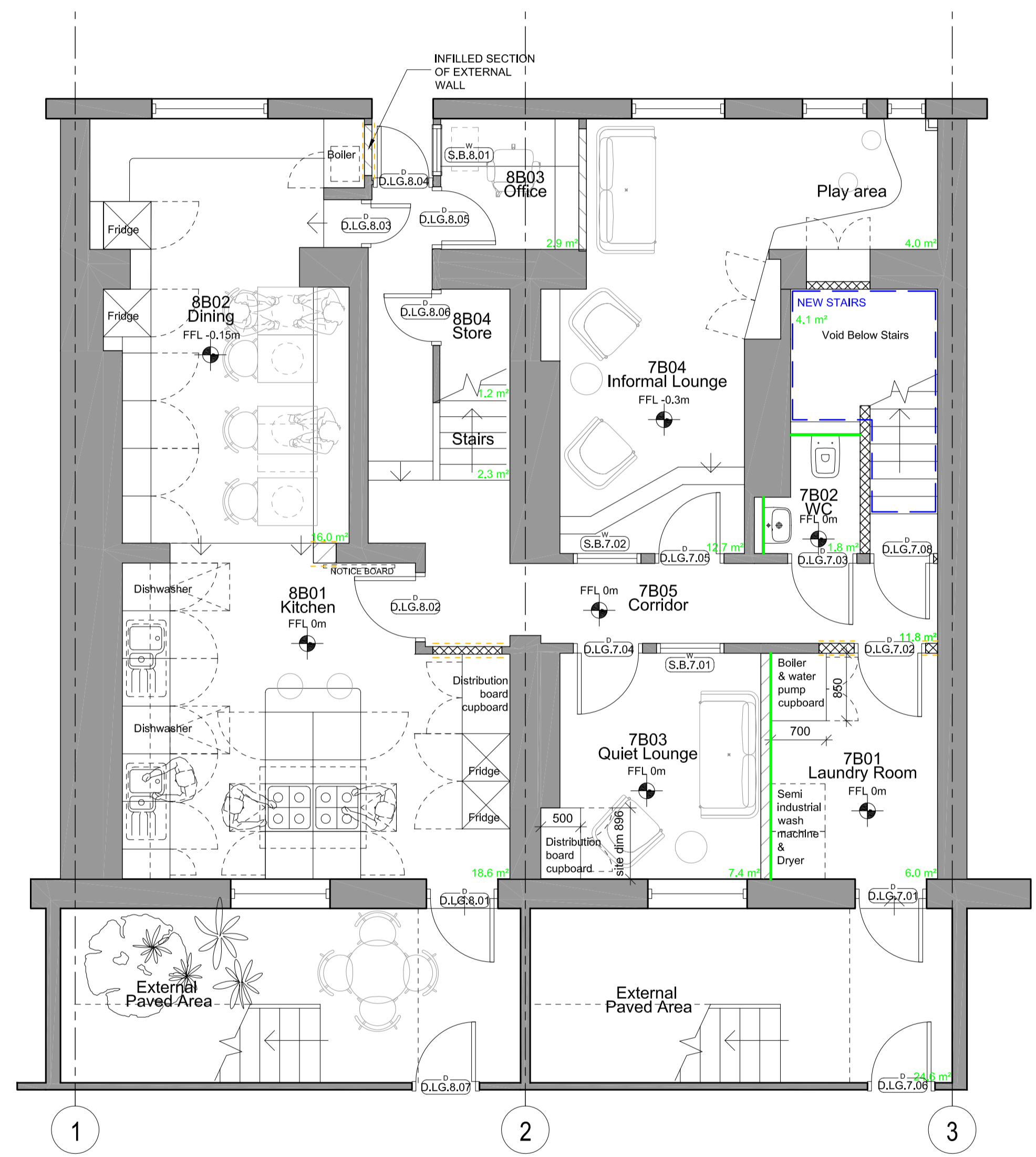
Scale	Size	Date First Issue
1:50	A1	28/10/16
Drawn by	Checked by	
GD	DF	

**Project**  
7-8 Sandwich Street GOSH Parents Accommodation

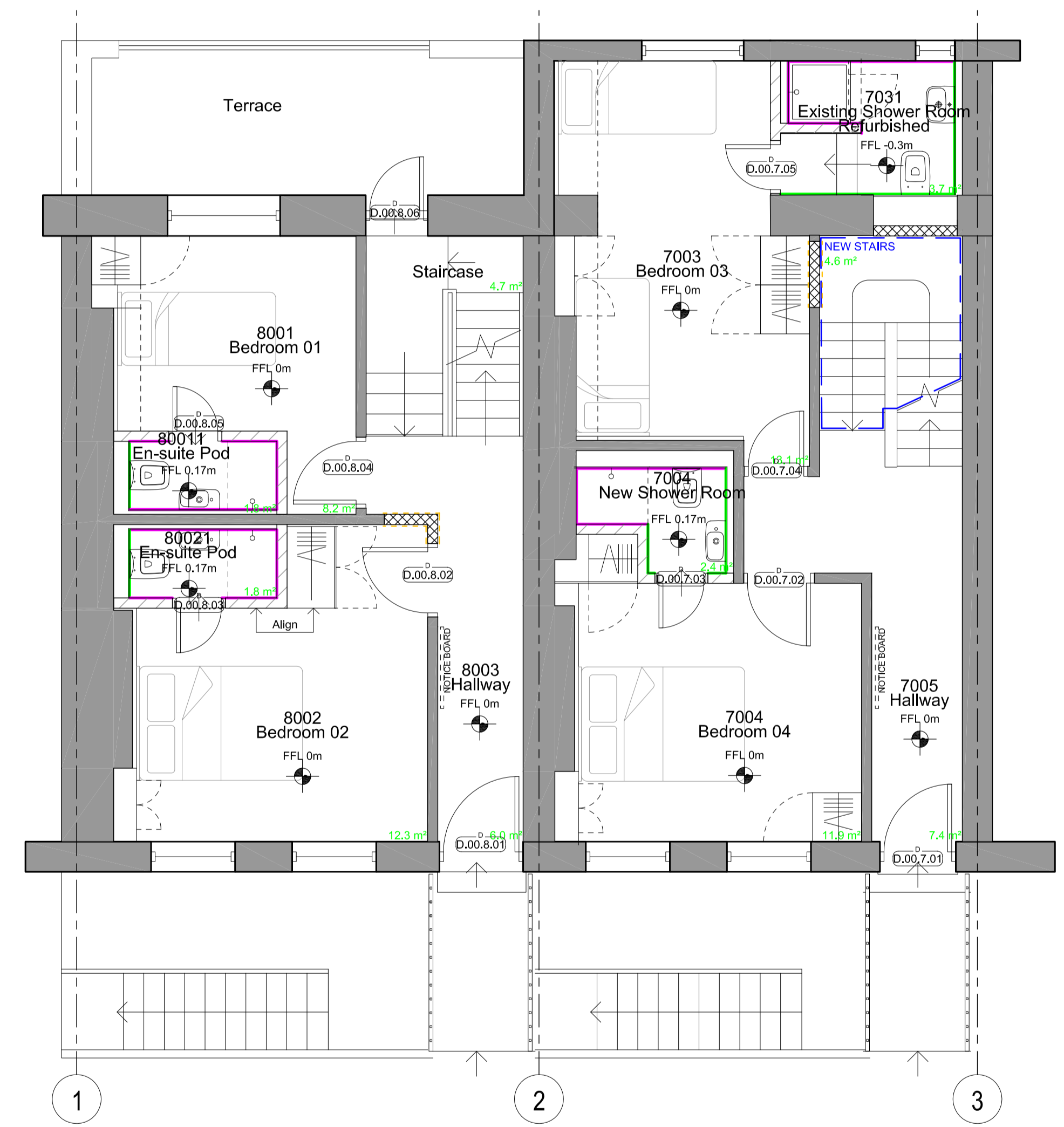
**Drawing**  
Lower Ground & Ground Floor General Arrangement Plan

Drawing number	Revision
16032-AA-G20-01	F

**Status**  
FOR APPROVAL



Lower Ground



Ground Floor