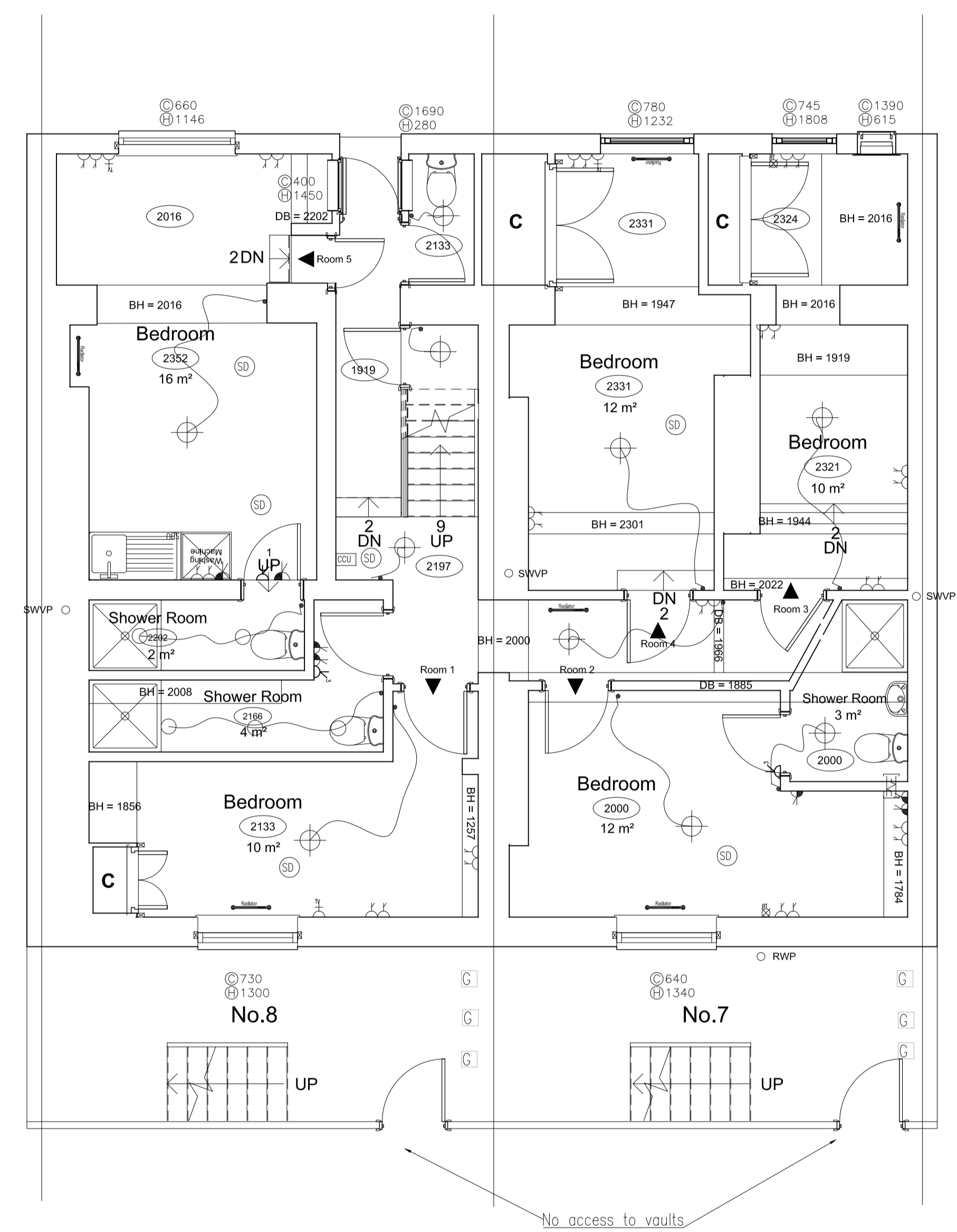


This drawing and design is for use solely in connection with the project described below. The drawing and design is the copyright of Avanti Architects Ltd. and must not be re-issued, loaned or copied without written consent. All dimensions and setting out to be checked on site before construction. This drawing is to be read in conjunction with all other information relevant to the project. Any apparent discrepancy is to be brought to the attention of Avanti Architects Ltd. Do not scale from this drawing.

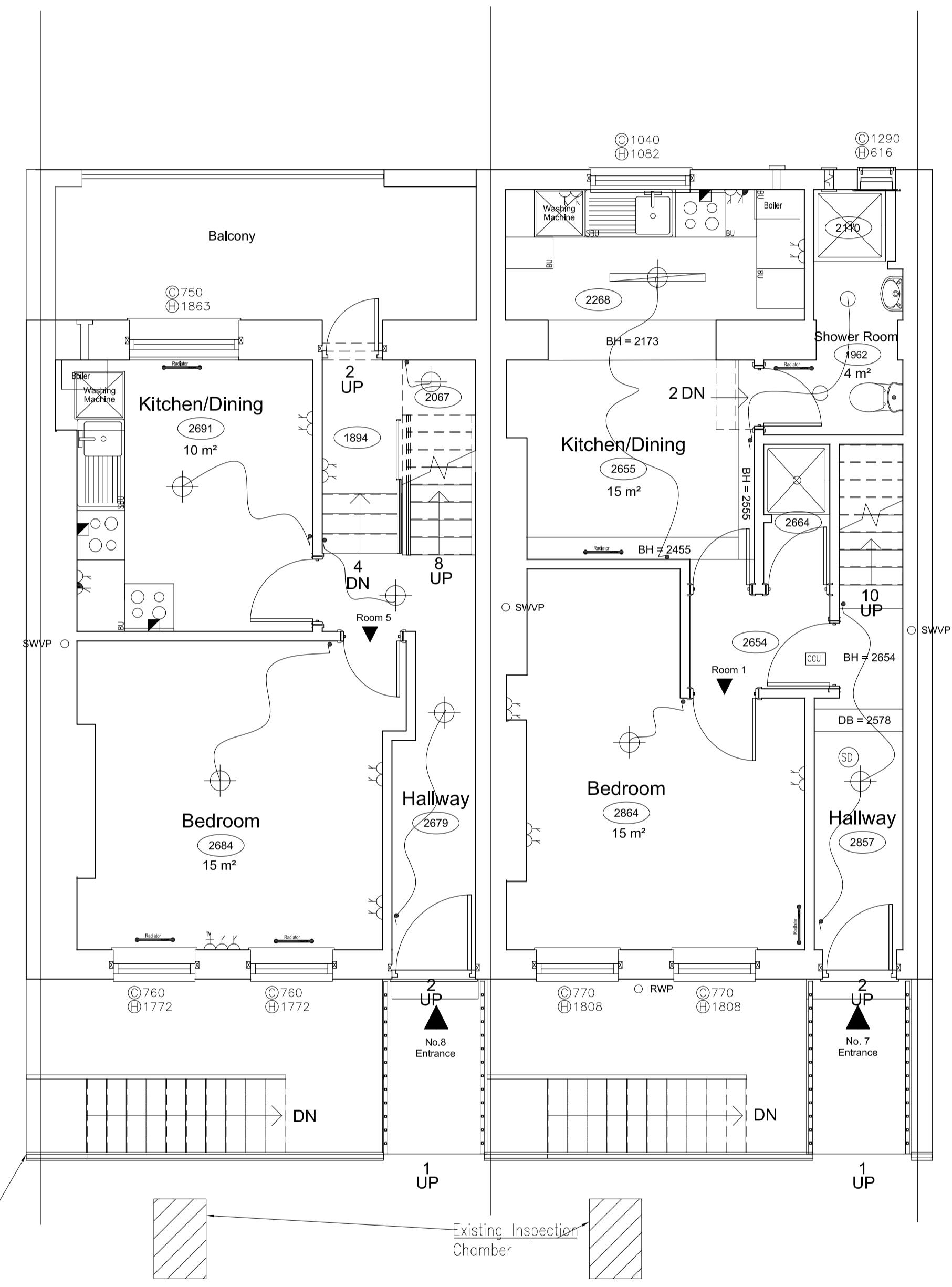
Notes

- KEY:
 TO BE READ IN CONJUNCTION WITH
 a. SPECIFICATION C20
 b. G11, G420 & G33 SERIES
 c. INTERIOR SPECIALIST JOINERY REPORT
 16032-AA-07-G4-RPT001
 d. INTERIOR SANITARY FIXTURES REPORT
 16032-AA-07-G4-RPT002

- Radiator
- Light fitting
- Batten light fitting (wet rooms)
- Fluorescent light fitting
- Low level double socket
- High level double socket
- Low level single socket
- Switched spur (H/L = High level)
- TV Point
- BT Point
- Cooker spur
- Shower socket
- Light switch
- Light pullcord
- Smoke detector
- Heat detector
- CO2 detector
- Electric Meter
- Gas Meter
- CDU
- Extractor fan
- Gas Point
- Wiring
- Drainage run
- Downstand beam/Bulkhead



Lower Ground



Ground Floor

Revision	Date	Drawn by	Checked by	Description

Scale: 1:50 Size: A1 Date First Issue: 23/12/16

Drawn by: GD Checked by: DF

Project: 7-8 Sandwich Street GOSH Parents Accommodation

Drawing: Lower Ground & Ground Floor Existing Plan

Drawing number: 16032-AA-EX-P01 Revision: -

Status: FOR APPROVAL

