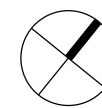


North

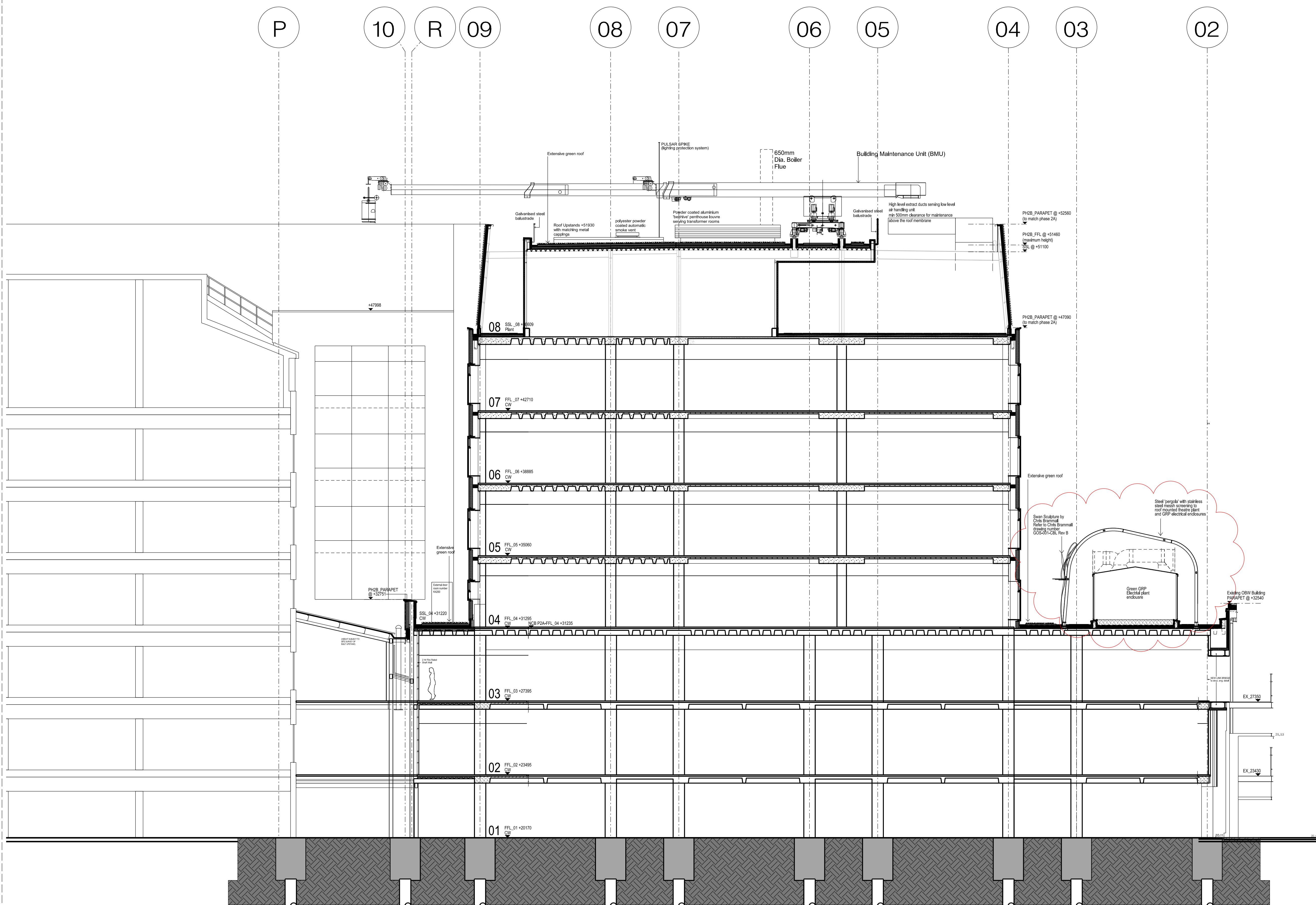
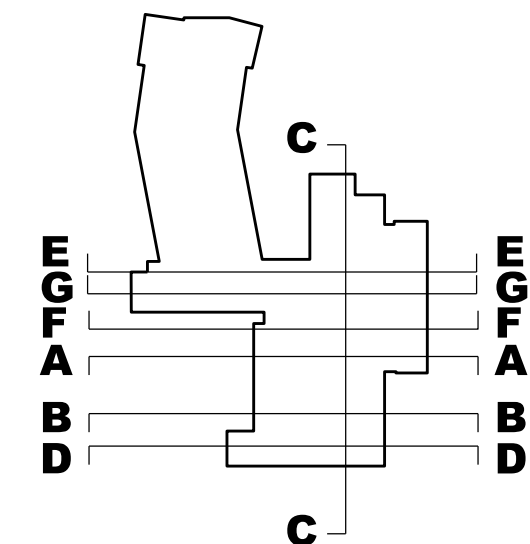


- All dimensions to be checked on site
- Do not scale off this drawing
- All dimensions are shown in mm unless otherwise stated
- Refer to drawing issue sheet for purpose of issue
- If in doubt ask
- © Llewelyn Davies Weeks Ltd.

Notes

Refer to WSP drawing WSP_0523_K_GA_500_08_101 for full extent of roof mounted plant equipment

Refer to plan and other sections for position of BMU running track



C6	Issued under DCR A-249 for approval and for the Discharge of Condition 5	16.11.16	NP
C5	Issued under DCR A-131 for approval. Discharge of Condition 5	26.11.15	NR
C4	Issued under DCR A-129 for approval.	16.11.15	NR
C3	Issued under DCR A-076 for approval. Issued for concurrent planning approval of details of plant etc (discharge of Condition 8) and Non Material Amendments (minor changes to elevations)	08.07.15	NR
C2	Issued under DCR A-069 for approval	15.06.15	LD
C1	Amended in accordance to RF1 B/118 Construction Issue	26.05.14	MN
T1	Updated for Tender Issue	17.01.13	MG
04	Drg no updated	19.09.12	MG
03	drawing updated to GOSH comments	07.09.11	AA
02	External Wall & Roof Updated	20.05.11	GH
01	External Wall & Floor Level amended	06.12.10	GH
No.	Description	Date	By
Revisions			

Structural Consultant Services Consultant



Project Manager



Project Title

Great Ormond Street Hospital
Phase 2 B

Client

Great Ormond Street
Hospital for Children
NHS Trust

Drawing Title

SECTION F-F
South of hospital street looking north

Drawing Number Revision
00_2B_S_FF C6

Scale @ A1

A1_1:100 - A3_1:200

Date

Architects

LEWELYN
DAVIES

Architects | Planners | Designers
www.ldavies.com