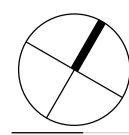


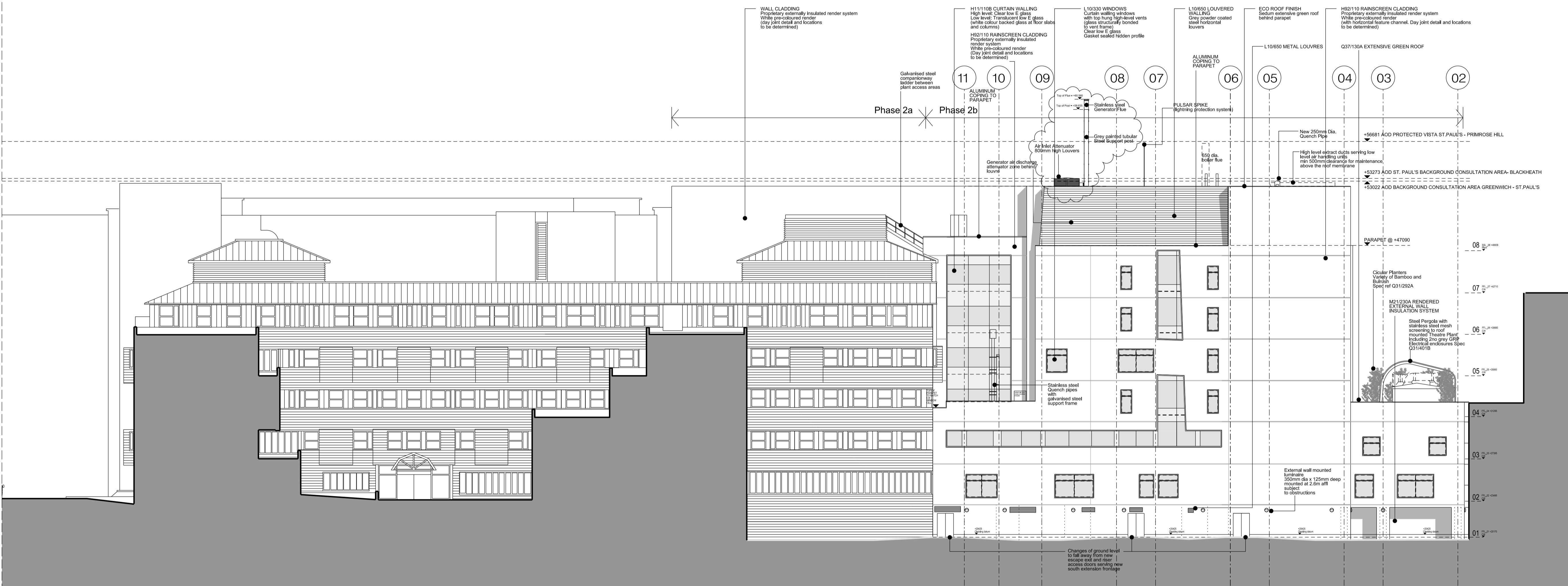
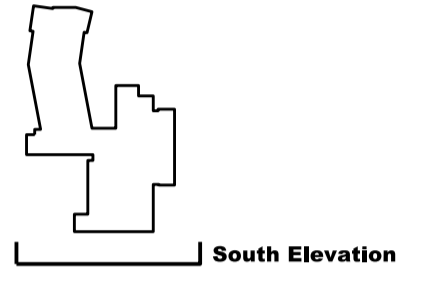
North



- All dimensions to be checked on site
- Do not scale off this drawing
- All dimensions are shown in mm unless otherwise stated
- Refer to drawing issue sheet for purpose of issue
- If in doubt ask
- © Lewelyn Davies Weeks Ltd.

Notes
 Read in conjunction with original approved drawing number: E_2AB_S1
 Original planning application : 2007/4116/P

refer to plans and sections for details for balustrades and BMU tracking arrangements



C15	Issued to Skanska for approval under DCR A-233 ready for resubmission under Condition 8 of the planning Application	11.10.16	NP
C14	Issued under DCR A-207 for approval	20.06.16	NP
C13	Issued under DCR A-202 for approval	01.06.16	NP
C12	Issued under DCR A-153 for approval Additional comments to Discharge of condition 5	18.01.16	NR
C11	Issued under DCR A-131 for approval Discharge of condition 5	26.11.15	NR
C10	Issued under DCR A-129 for approval	16.11.15	NR
C9	Issued under DCR A-125 for approval	05.11.15	NR
C8	Issued under DCR A-077 for approval. Issued for concurrent planning application for Non Material Amendments (minor changes to elevations)	09.07.15	NR
C7	Issued under DCR A-076 for approval. Issued for concurrent planning approval of details of plant etc (discharge of Condition 8) and Non Material Amendments (minor changes to elevations)	08.07.15	NR
C6	Issued under DCR A-071 for approval	16.06.15	NR
C5	Issued under DCR A-069 for approval	15.06.15	NR
C4	Changes from original planning application highlighted with clouds for RACP 0019 approval	13.05.15	NR

The following changes are listed below
 -horizontal feature channels continued between grids 02 & 04
 -notes added

C3	Level 01 ventilation louvers added for Pre-Application review	20.11.14	JD
C2	Amended Quench pipes in accordance to RFI F/45	28.07.14	MN
C1	Added Generator Flue in accordance to RFI F/45 (Subject to planning permission approval)	26.05.14	MN
T3	Glass Specification Update	23.01.13	AMA
T2	Glass NBS Refs Added	05.09.13	AMA
T1	Updated for Tender Issue	17.01.13	AA
O4	Drg no updated	19.09.12	MG
O3	drawing updated to GOSH comments	07.09.11	AA
O2	Elevation updated	26.05.11	AA
O1	Windows and parapets updated	12.05.11	AA

No.	Description	Date	By
Revisions			

Structural Consultant: **WSP**
 Services Consultant: **WSP**
 Project Manager: **WSP**
 Cost Consultant: **WSP**
 Project Title: **WSP**

**Great Ormond Street Hospital
 Phase 2 B**

Client: **Great Ormond Street Hospital for Children NHS Trust**

Drawing Title: **SOUTH ELEVATION
 2105 update**

Drawing Number: **00_2B_E_S** Revision: **C15**

Scale @ A1: **A1_1:200 - A3_1:400**
 Date: