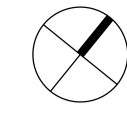


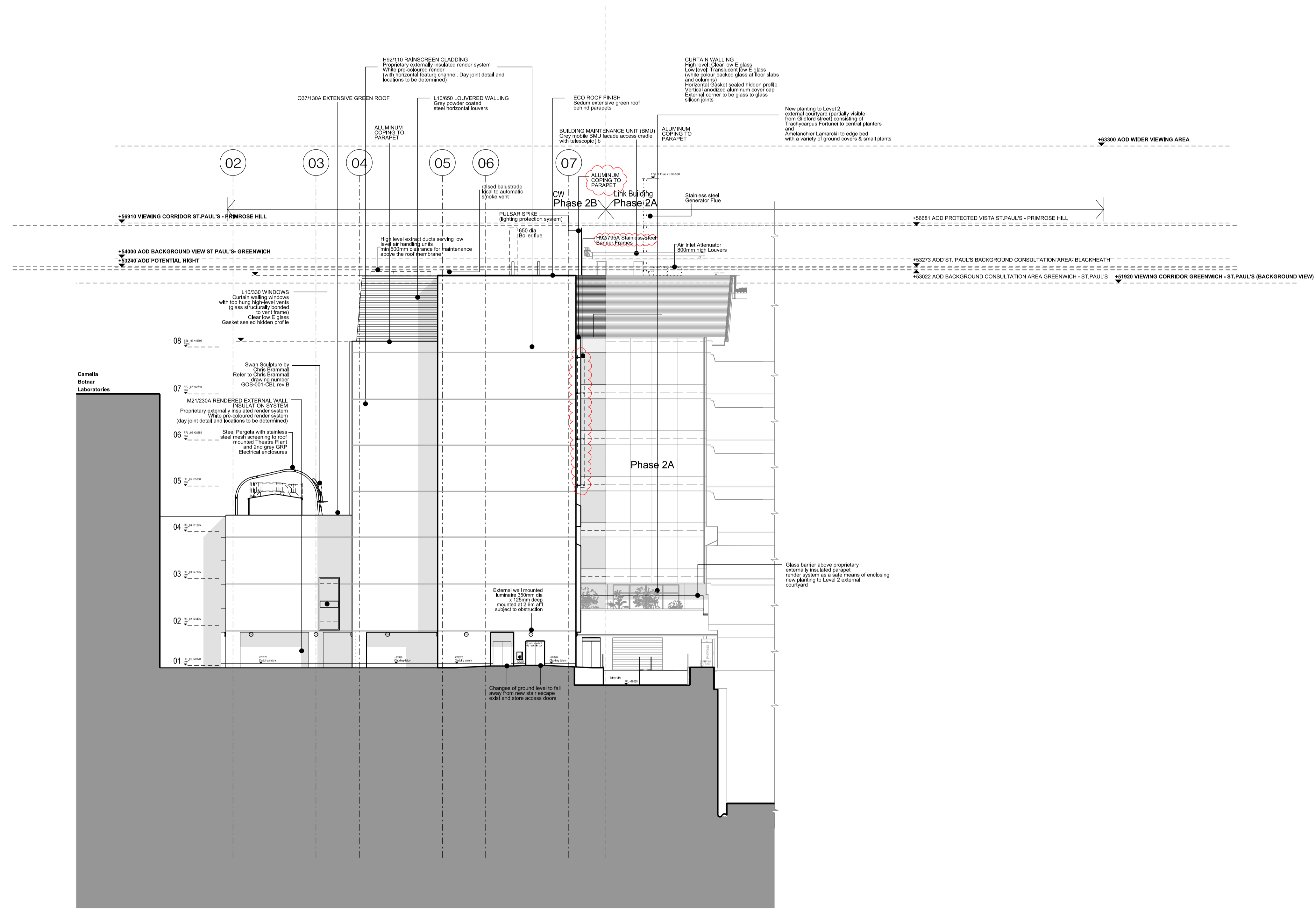
North



- All dimensions to be checked on site
- Do not scale off this drawing
- All dimensions are shown in mm unless otherwise stated
- Refer to drawing issue sheet for purpose of issue
- If in doubt ask
- © Lewelyn Davies Weeks Ltd.

Notes
 Read in conjunction with original approved drawing number: E_2AB_N3
 Original planning application : 2007/4116/P

refer to plans and sections for details of balustrades and BMU tracking arrangements



C14	Issued under DCR A-254 for approval and for the discharge of NMA	12.12.16	NP
C13	Issued under DCR A-249 for approval and for the discharge of Condition 5	16.11.16	NP
C12	Issued to Skanska for approval under DCR A-233 ready for resubmission under Condition 8 of the planning Application	11.10.16	NP
C11	Issued under DCR A-202 for approval	01.06.16	NP
C10	Issued under DCR A-153 for approval Additional comments to Discharge of Condition 5	18.01.16	NR
C9	Issued under DCR A-131 for approval Discharge of Condition 5	26.11.15	NR
C8	Issued under DCR A-125 for approval	05.11.15	NR
C7	Issued under DCR A-119 for approval	26.10.15	NR
C6	Issued under DCR A-076 for approval. Issued for concurrent planning approval of details of plant etc (discharge of Condition 8) and Non Material Amendments (minor changes to elevations)	06.07.15	NR
C5	Issued under DCR A-071 for approval	16.06.15	NR
C4	Issued under DCR A-069 for approval	15.06.15	NR
C3	Changes from original planning application highlighted with clouds for RACP 0019 approval	13.05.15	NR

The following changes are listed below
 -horizontal feature channels added to echo Phase 2A
 -notes added

C2	Louvers amended for Pre-Application review	20.11.14	JD
C1	Added Generator Flue in accordance to RFI F/45 (Subject to planning permission approval) Construction Issue	26.05.14	MN
T4	Updated for Disney imaginaires	10.04.14	ZL
T3	Glass Specification Updated	23.01.14	AMA
T2	Glass NBS Refs Added	05.09.13	AMA
T1	Updated for Tender Issue	17.01.13	AA
02	Drg no updated	16.08.12	MG
01	drawing updated to GOSH comments	07.09.11	AA

Structural Consultant: Services Consultant
 Project Manager: WSP
 Cost Consultant: WSP
 Project Title: Great Ormond Street Hospital Phase 2 B

Client: Great Ormond Street Hospital for Children NHS Trust
 Drawing Title: NORTH ELEVATION 2015 update
 Drawing Number: 00_2B_E_N
 Revision: C14
 Scale @ A1: A1_1:200 - A3_1:400
 Date: