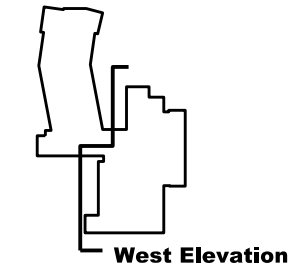


- All dimensions to be checked on site
- Do not scale off this drawing
- All dimensions are shown in mm unless otherwise stated
- Refer to drawing issue sheet for purpose of issue
- If in doubt ask
- © Llewelyn Davies Weeks Ltd.

#### Notes

Read in conjunction with original approved drawing number: E\_2AB\_E2  
Original planning application : 2007/4116/P

refer to plans and sections for details of balustrades and BMU tracking arrangements



C13 Issued under DCR A-254 for approval and the discharge of NMA	12.12.16 NP
C12 Issued to Skanska for approval under DCR A-233 ready for resubmission under Condition 8 of the Planning Application	11.10.16 NP
C11 Issued under DCR A-207 for approval	20.06.16 NP
C10 Issued under DCR A-202 for approval	01.06.16 NP
C9 Issued under DCR A-125 for approval	05.11.15 NR
C8 Issued under DCR A-076 for approval. Issued for concurrent planning approval of details of plant etc. (discharge of Condition 8) and Non Material Amendments (minor changes to elevations)	08.07.15 NR
C7 Issued under DCR A-072 for approval	18.06.15 NR
C6 Issued under DCR A-071 for approval	16.06.15 NR
C5 Issued under DCR A-069 for approval	15.06.15 NR
C4 Changes from original planning application highlighted with clouds for RACP 0019 approval	13.05.15 NR

The following changes are listed below -minor adjustments to mullion position between grids K & H -notes added		
C3 Louvres added; Pre-Application review	20.11.14 JD	
C2 Amended Mullion positions in accordance with internal room changes Updated Level 2 Courtyard terrace in accordance to RFI B/40 Updated Quench pipes in accordance with RFI F/45	28.07.14 MN	
C1 Added Generator Flue in accordance to RFI F/45 (Subject to planning permission approval) Construction Issue	26.05.14 MN	
T4 Updated for Disney imaginars	09.04.14 ZL	
T3 Glass Specification Update	23.01.14 AMA	
T2 Glass NBS Refs Added	05.09.13 AMA	
T1 Updated for Tender Issue Drawing Updated to GOSH Comments	17.01.13 AA	
04 Drg no changed and road level raised	19.09.12 MG	
03 drawing updated to GOSH comments	07.09.11 AA	
02 Elevation updated	26.05.11 AA	
01 Windows and Parapet revised	12.05.11 AA	
A Windows Revised	29/03/11 GH	
No. Description	Date	By
Revisions		

Structural Consultant Services Consultant

**WSP**  
Project Manager  
**WSP**  
Cost Consultant  
**CT**  
Project Title

Great Ormond Street Hospital  
Phase 2 B

Client

Great Ormond Street **NHS**  
Hospital for Children  
NHS Trust

Drawing Title

WEST ELEVATION  
2015 update

Drawing Number Revision  
00\_2B\_E\_W C13

Scale @ A1  
A1\_1:200 - A3\_1:400  
Date

Architects

**LLEWELYN DAVIES**

Architects | Planners | Designers  
www.ldaves.com