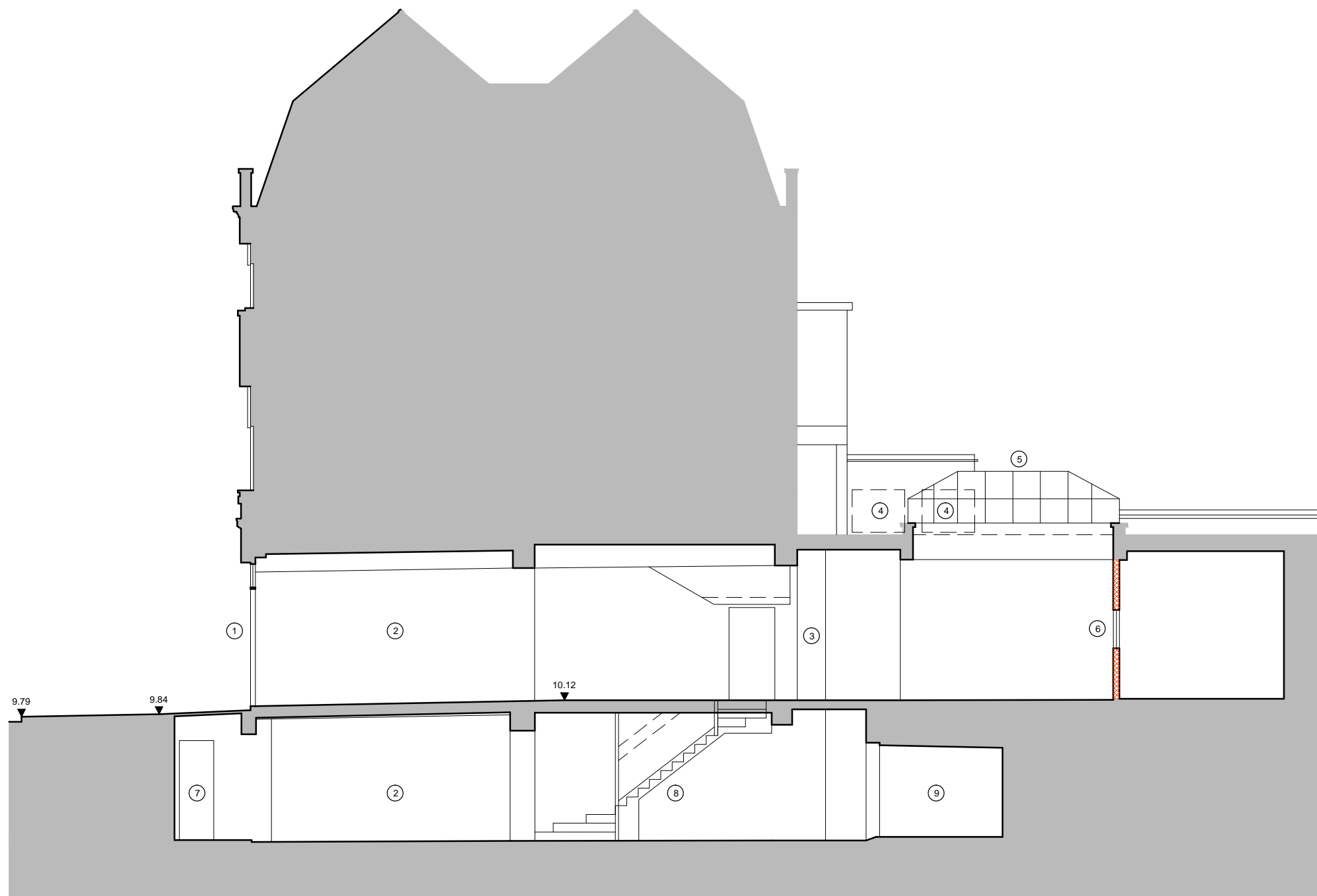


The use of this data by the recipient acts as an agreement of the following statements. Do not use this data if you do not agree with any of the following statements:-

All drawings are based upon site information supplied by third parties and as such their accuracy cannot be guaranteed. All features are approximate and subject to clarification by a detailed topographical survey, statutory service enquiries and confirmation of the legal boundaries.

Do not scale except for planning purposes.

Report any discrepancies in writing to Palmer Lunn Architects before proceeding.



Schedule of Works

1. existing non-original shopfront removed
2. original walls, structure & finishes retained
3. existing service riser duct retained for re-use
4. non-original air handling units and associated services removed
5. existing glazed lantern retained & repaired. Non-original cracked or obscured glass replaced with clear glazing
6. non-original lightweight partition removed
7. non-original lightweight partition removed
8. existing timber staircase retained
9. existing vaults retained

| | | | | |
|-----|----------|------------|-----|-----|
| P02 | Planning | 23.12.2016 | APa | MLu |
| P01 | Planning | 25.11.2016 | APa | MLu |

| Rev | Description | Date | Drn | Chk |
|-----|-------------|------|-----|-----|
|-----|-------------|------|-----|-----|

Status

PLANNING

Client

Build8

Project

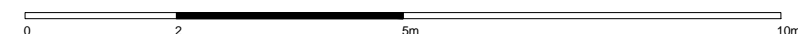
Shop Refurbishment
15 Percy Street
London W1T 1DS

Drawing

Section AA
as Existing

| Project No. | Drawing No. | Revision |
|-------------|-------------|----------|
| 16006 | PCY-PL-006 | P02 |

Scale @ A3 Drawn By
1:100 APa



palmer lunn architects

www.palmerlunn.com