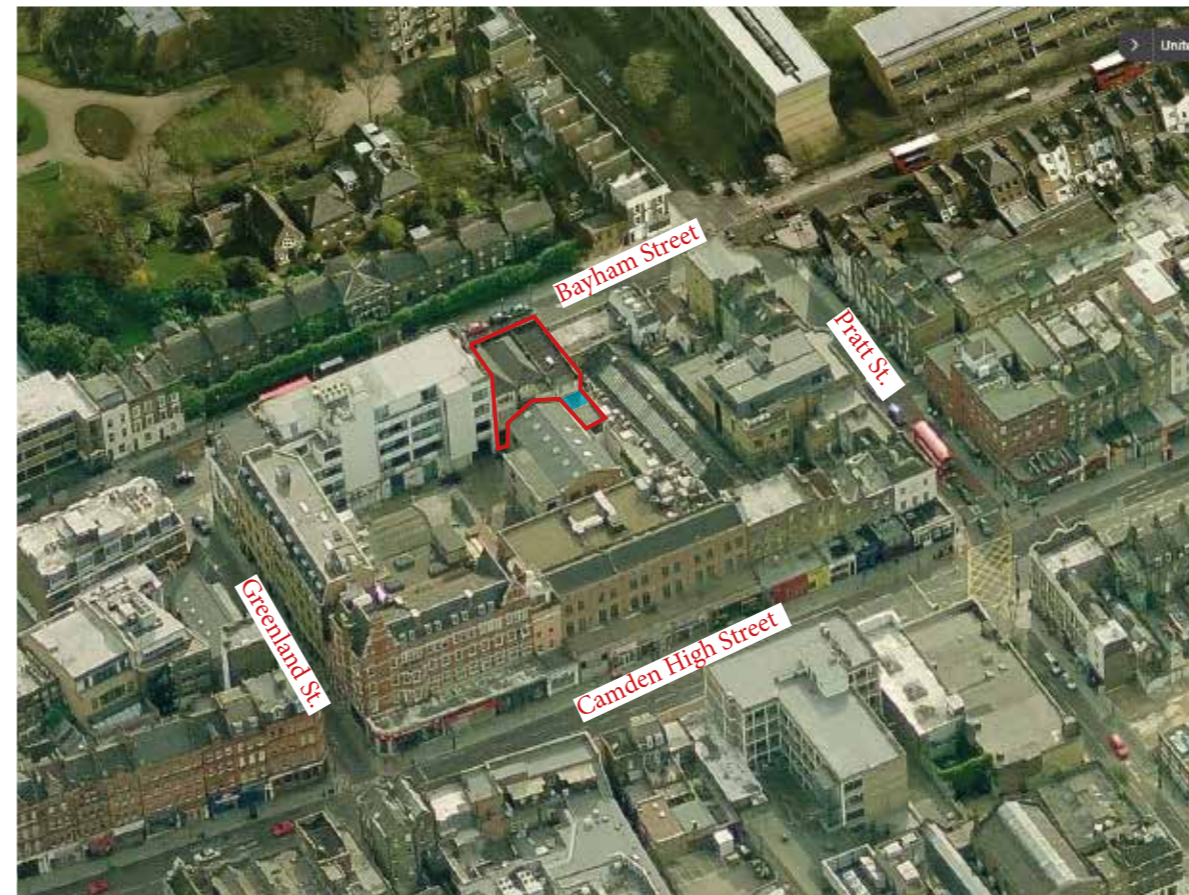
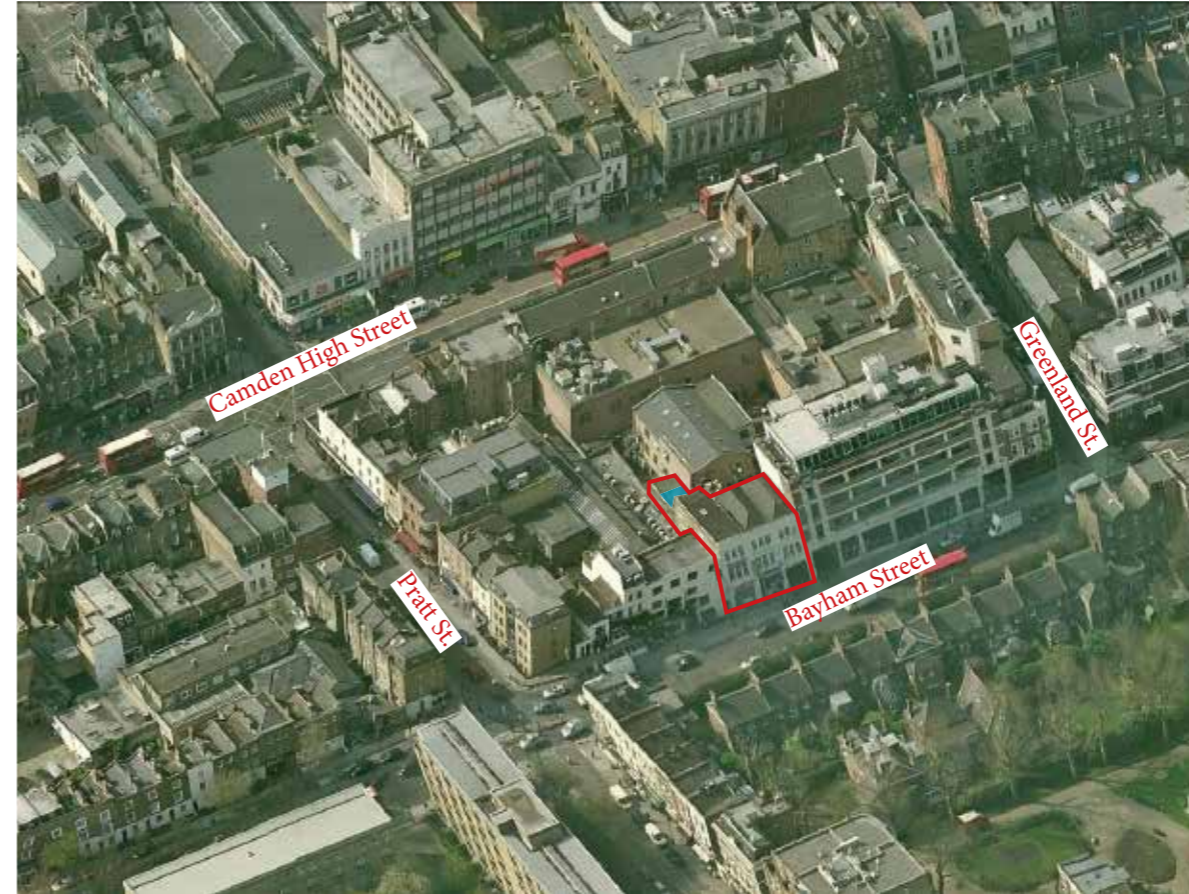




WRIGHT & WRIGHT ARCHITECTS

89-91 Bayham Street
Rear Roof Terrace
Photographs

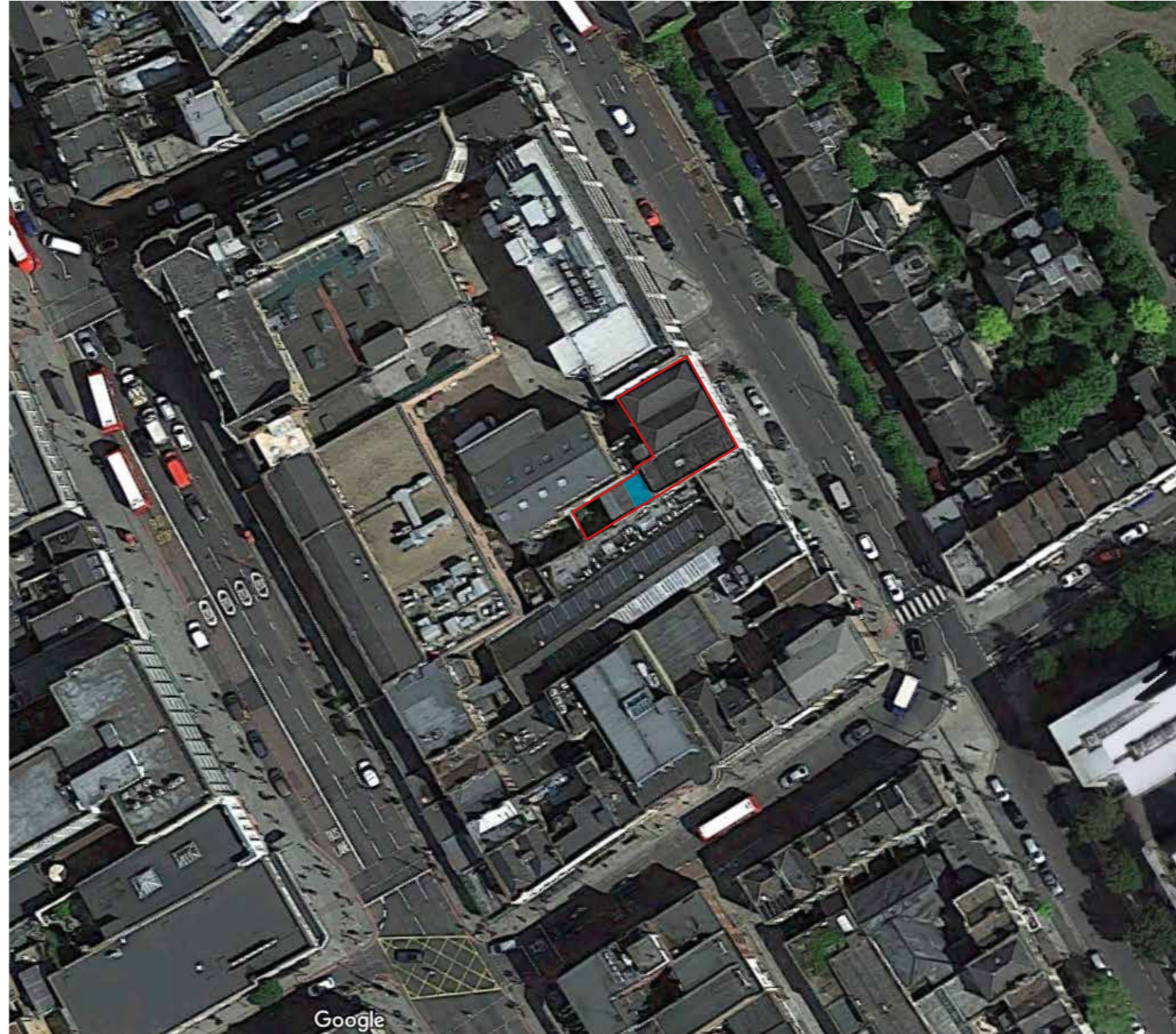
November 2016



AERIAL PHOTOGRAPHS



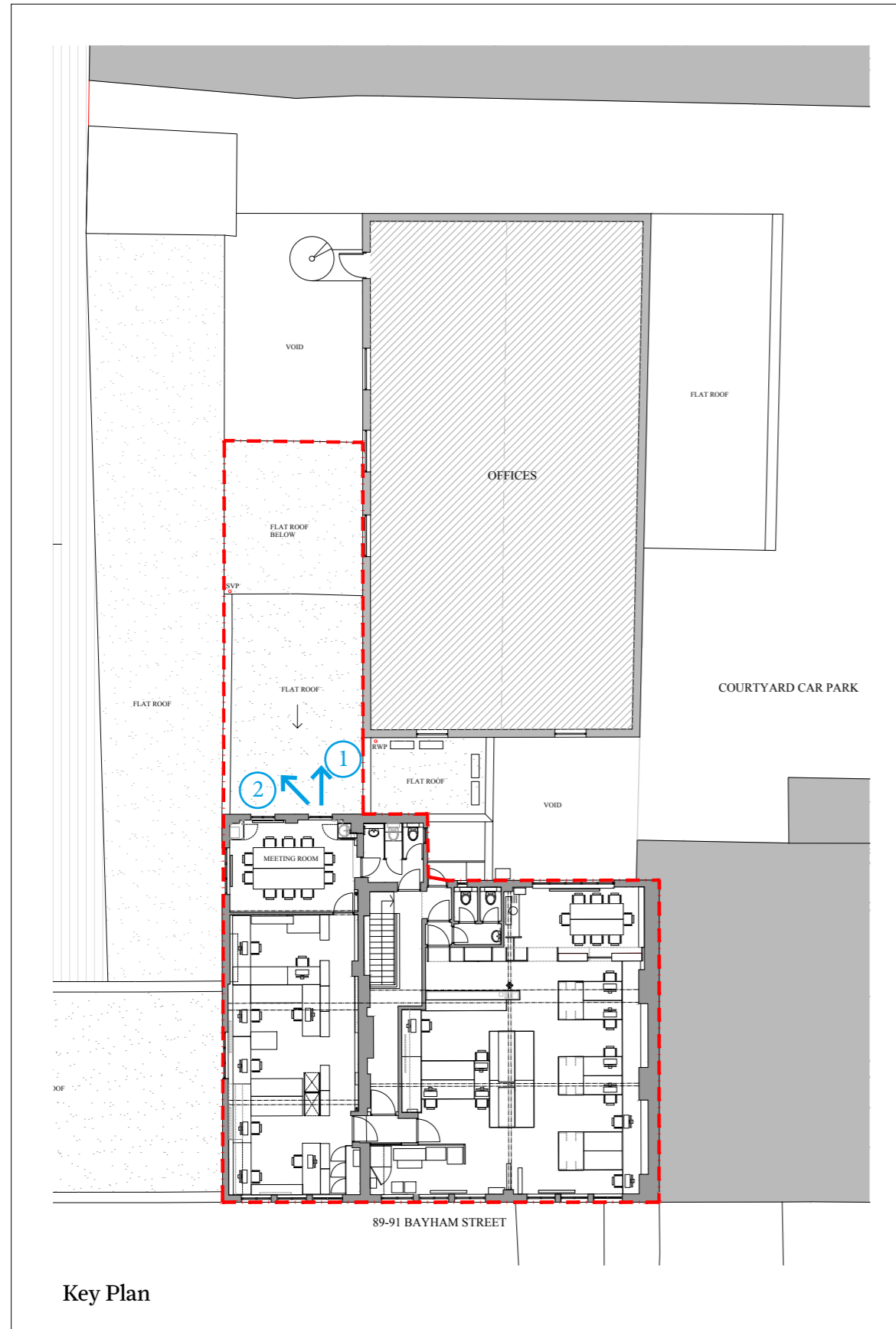
	Location of terrace
	Property boundary

AERIAL PHOTOGRAPHS

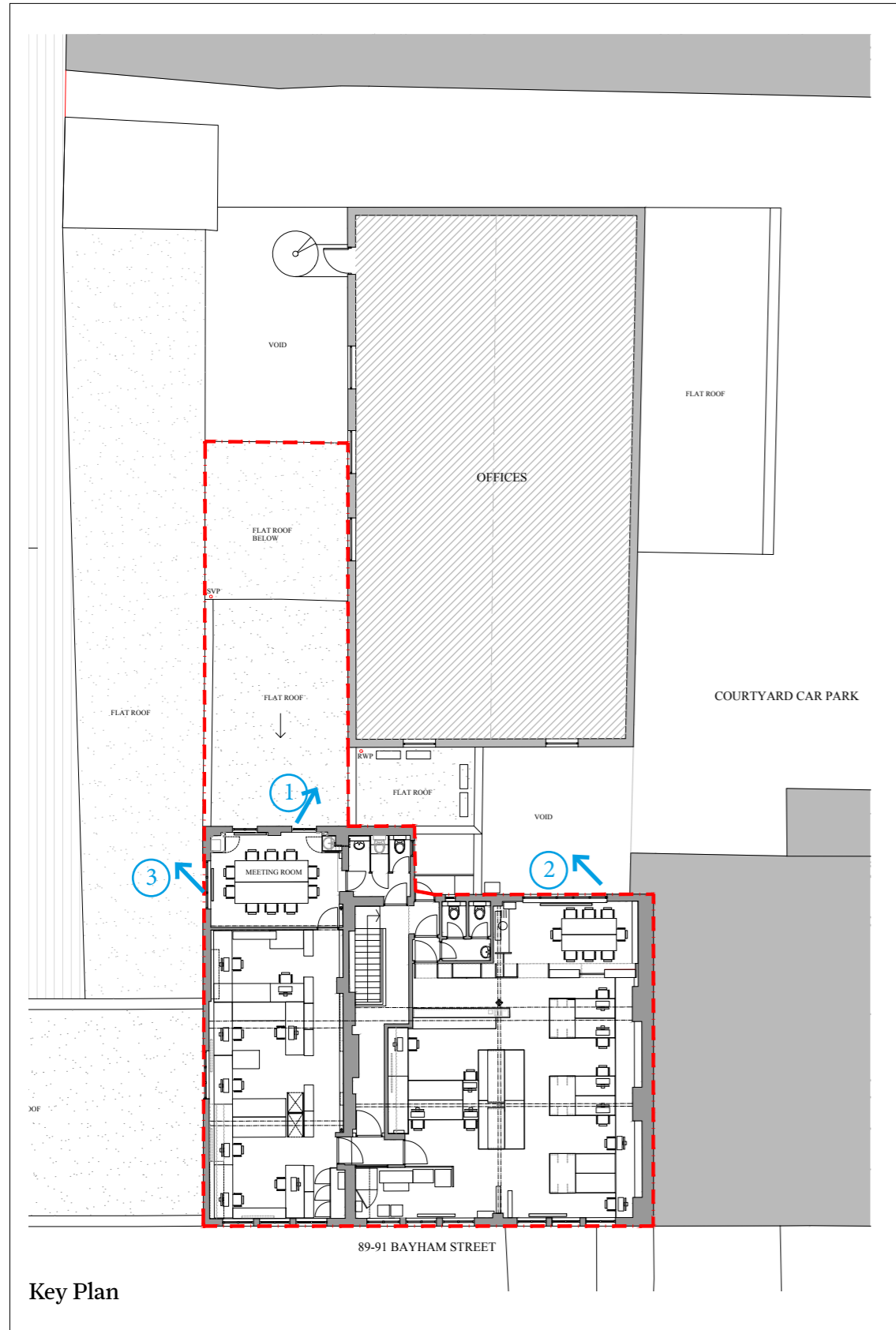


	Location of terrace
	Property boundary

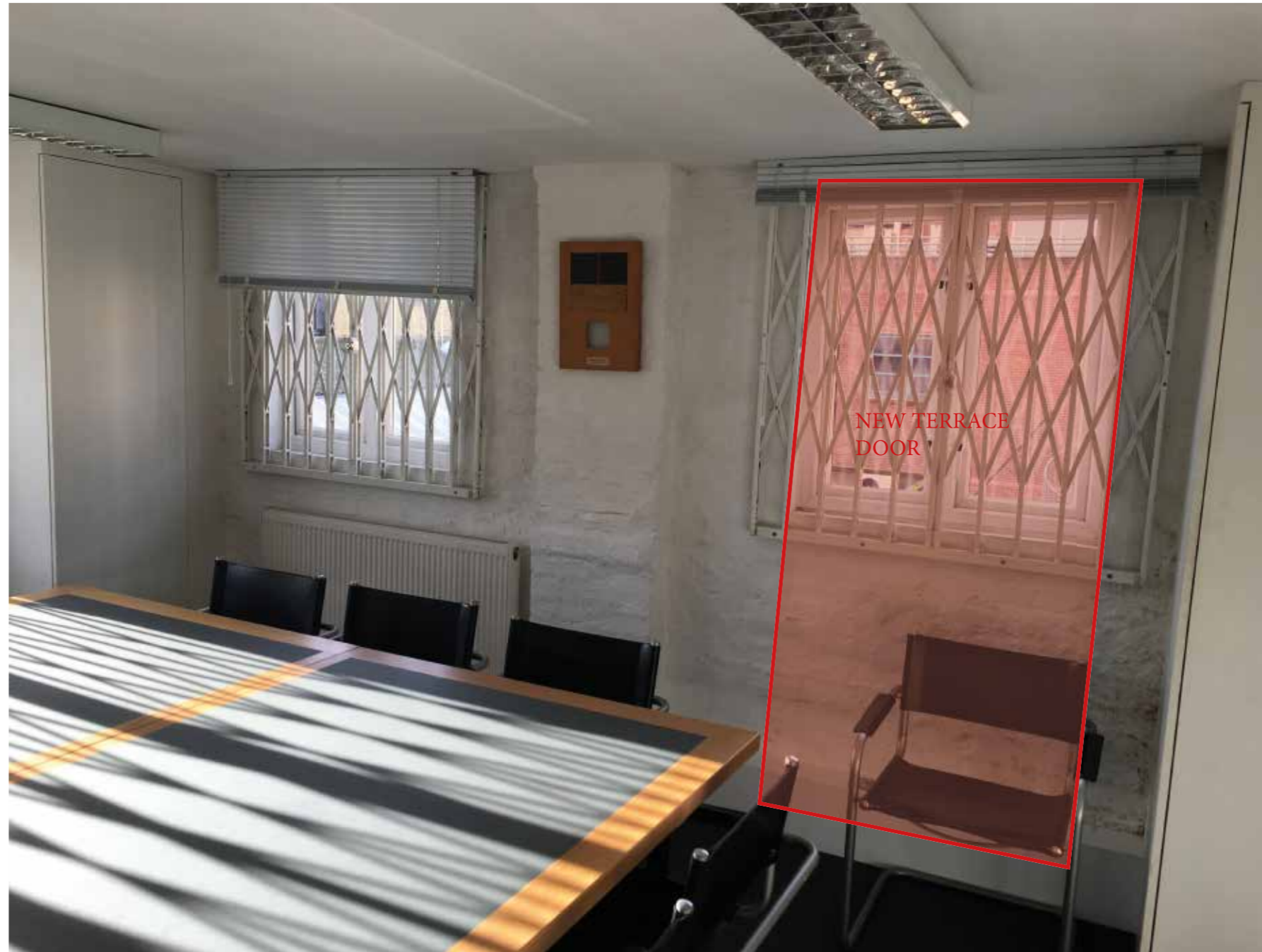
REAR PHOTOGRAPHS



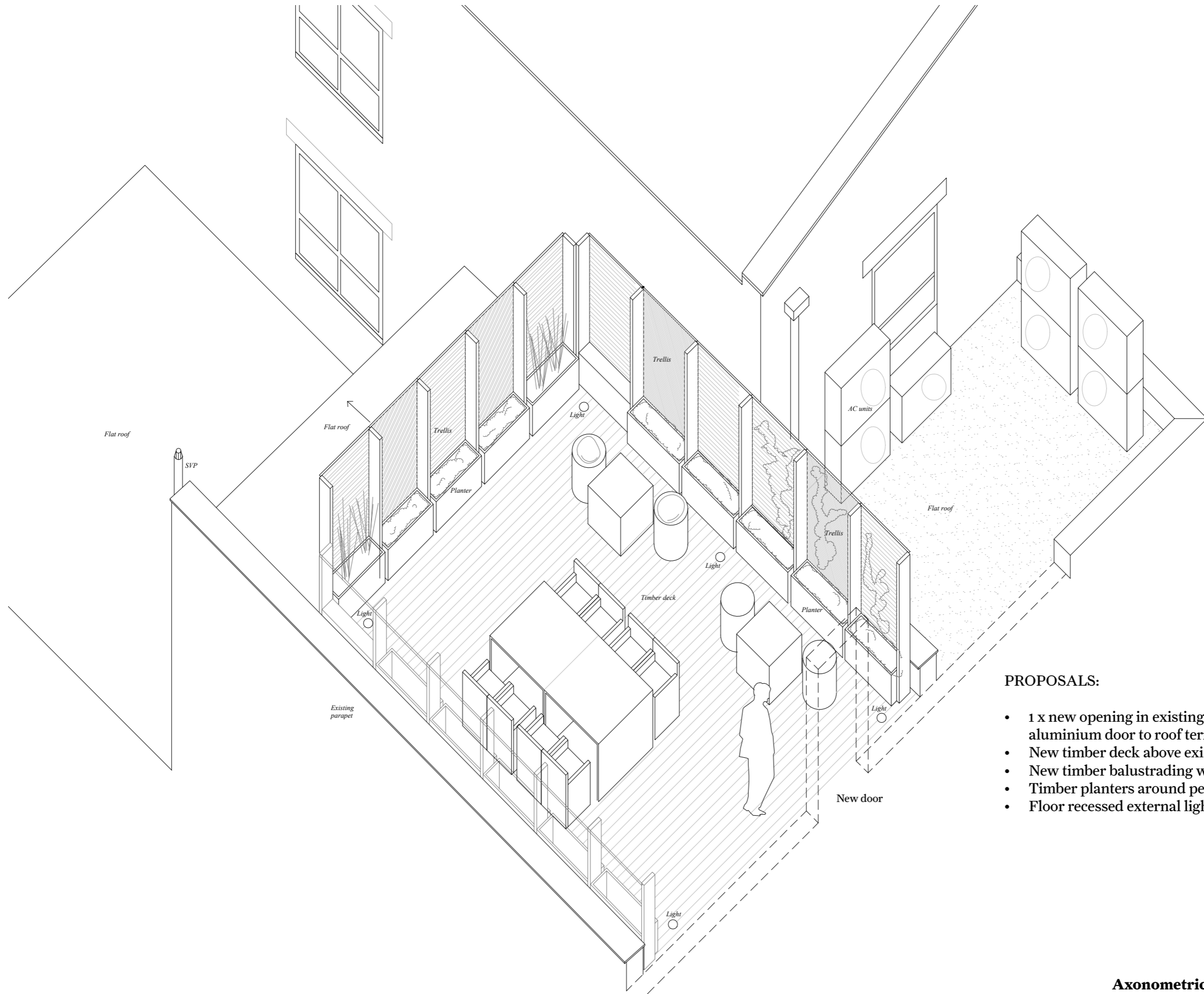
REAR PHOTOGRAPHS



INTERNAL PHOTOGRAPH



PROPOSAL



PROPOSALS:

- 1 x new opening in existing window opening and new aluminium door to roof terrace.
- New timber deck above existing flat roof.
- New timber balustrading with trellis.
- Timber planters around perimeter.
- Floor recessed external lighting (x 6).

Axonometric of proposal