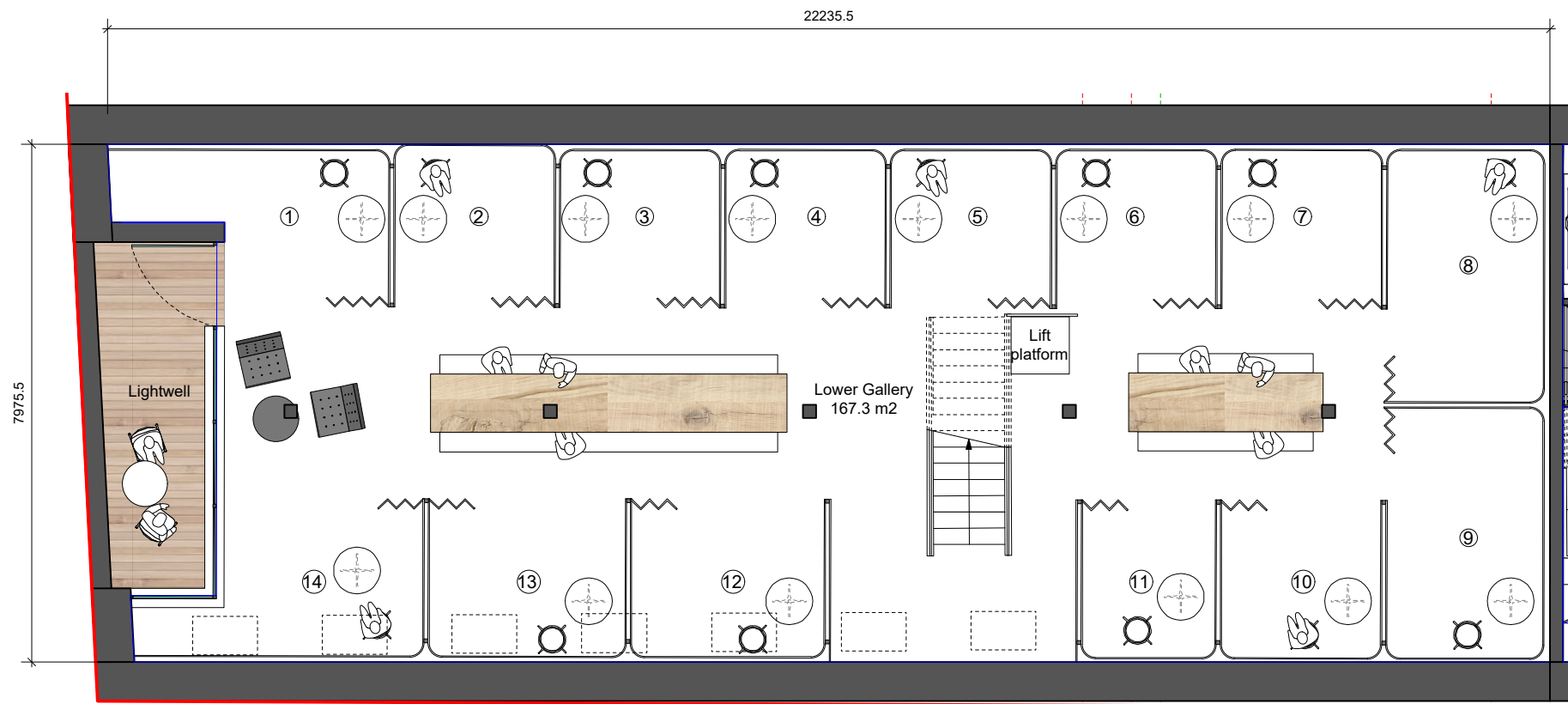
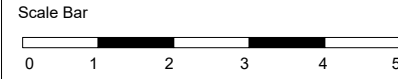


NOTE
This drawing is copyright. Do not scale off dimensions. All dimensions are to be checked on site by contractor. Contractor to report any dimensional discrepancies, errors or omissions prior to commencing on site.

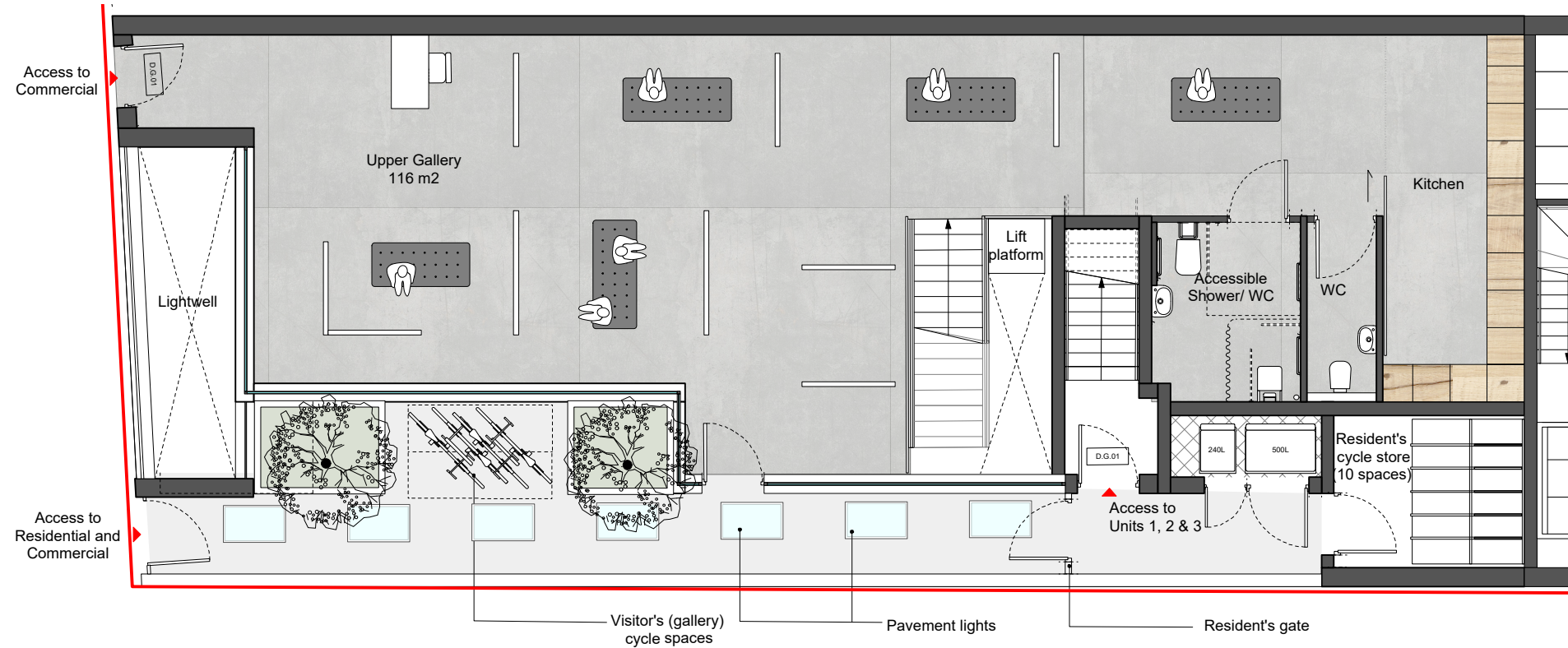


PROPOSED COMMUNITY SPACE - Basement Plan



KEY

- Indicates site boundary
- Functional rooms Basement: 167.3 m2
Functional rooms GF: 116 m2
- TOTAL NIA: 283.3 m2**
- (X) Permanent studio spaces = 14 spaces
- (O) Temporary studio spaces = 4 spaces
- Total studio spaces: 18 spaces**



PROPOSED COMMUNITY SPACE - Ground Floor Plan

I		
H		
G		
F		
E		
D		
C		
B		
A		
REV	DATE	DETAILS

CLIENT
-

PROJECT
Rochester Square, Camden

DRAWING TITLE
Proposed Plans-Community Space & Areas

STATUS
Planning

DATE: 22.12.2016 SCALE: 1:100@A3

JOB NO.	ELEMENT	TYPE	DRAWING NO.	REVISION
1606	[--]	GA	062	-

spacelab

18 Wenlock Road London N1 7TA
+44 (0)20 7033 3450 www.spacelab.co.uk