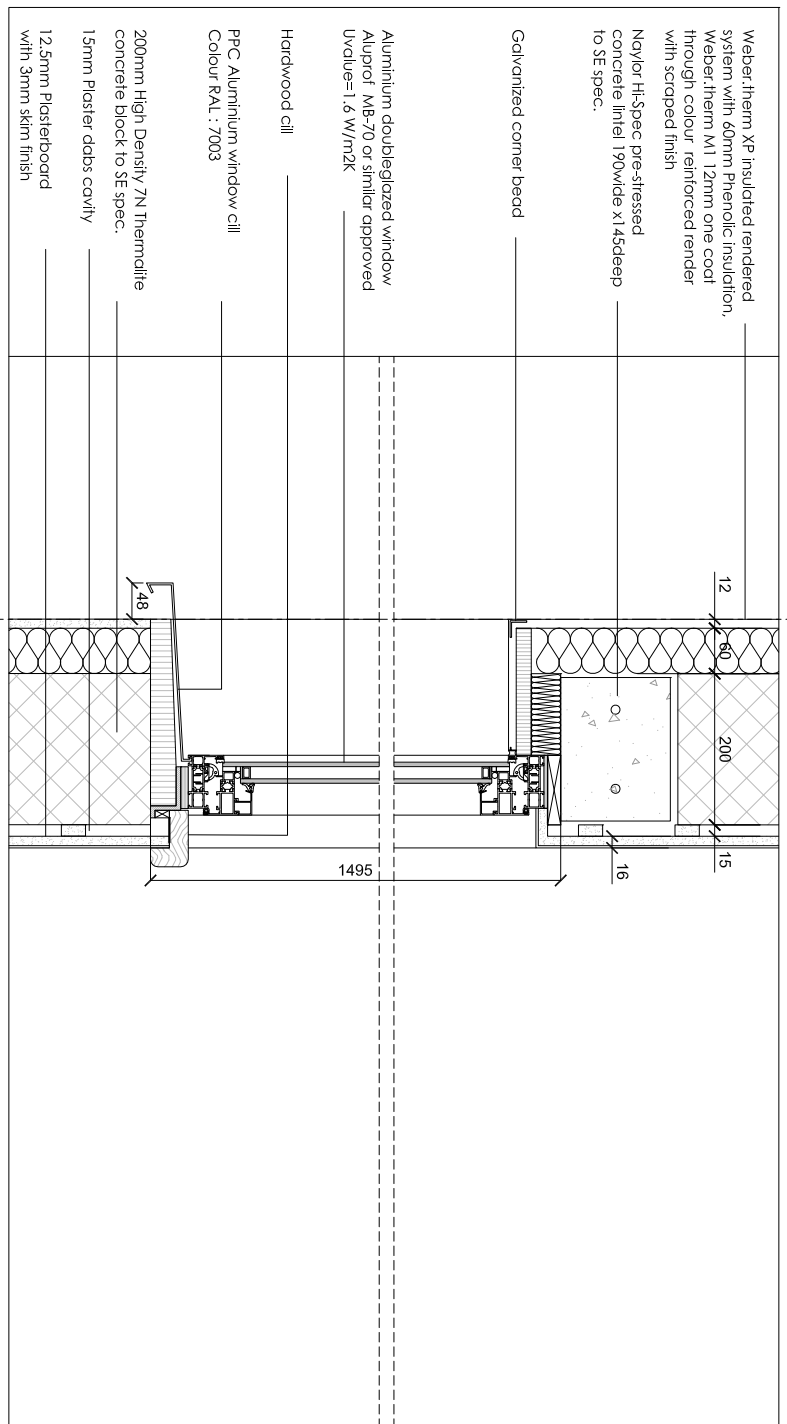
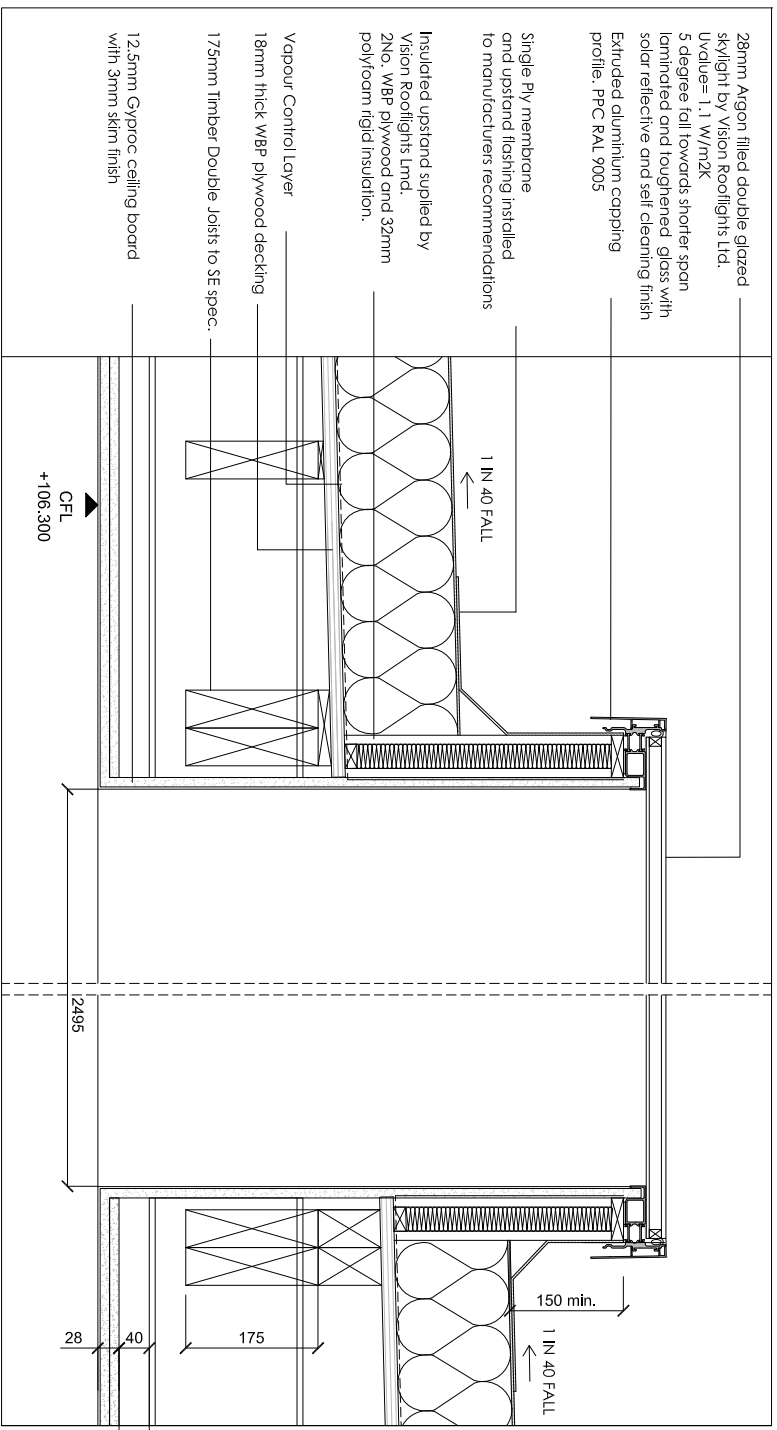


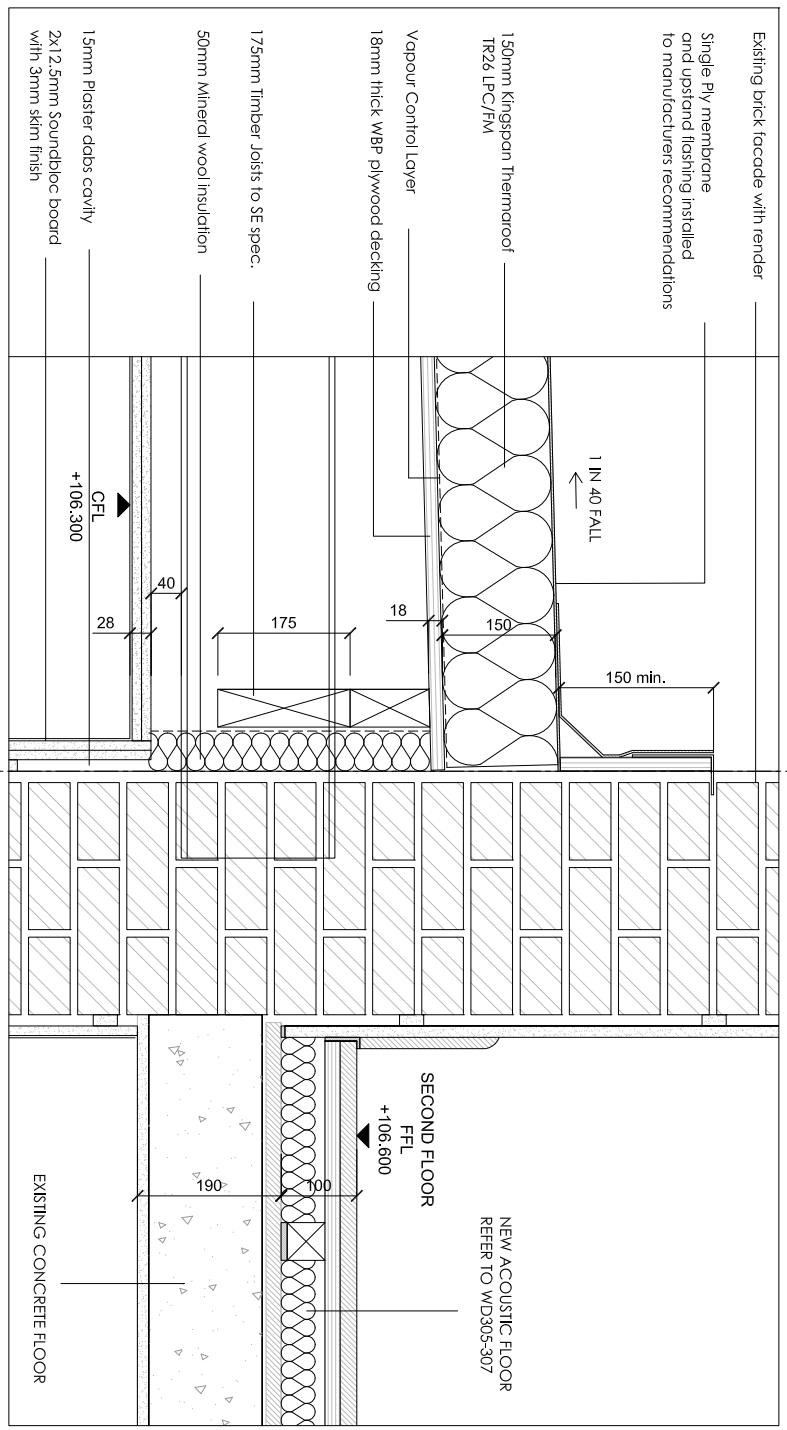
1 FLAT ROOF GUTTER AND PARAPET DETAIL  
WD202 SCALE 1:5@A1



2 NEW EXTENSION FACADE AND WINDOW DETAIL  
WD202 SCALE 1:5@A1



3 SKYLIGHT DETAIL  
WD202 SCALE 1:5@A1



4 NEW EXTENSION ROOF INTERFACE WITH EXISTING REAR FACADE  
WD202 SCALE 1:5@A1

Revision	Date	Reason	Initial	Notes
/	19.05.16	DETAIL DESIGN	GM	
A	07.06.16	DETAIL DESIGN	GM	
B	06.09.16	DETAIL DESIGN	GM	

- FOLLOW MANUFACTURERS INSTRUCTIONS/RECOMMENDATIONS FOR ALL INSTALLATIONS
- REFER TO RELATIVE CONSULTANTS REPORTS FOR FURTHER DETAILS WHEN APPLICABLE
- TO BE READ IN CONJUNCTION WITH STRUCTURAL ENGINEER DRAWINGS
- TO BE READ IN CONJUNCTION WITH MECHANICAL ENGINEER DRAWINGS
- 1 HOUR FIRE RATING TO ALL STRUCTURAL ELEMENTS.
- 30 MIN. FIRE RATING TO ALL INTERNAL PARTITIONS AND FLOORS
- IF THE MATERIAL IS NOT PRESCRIBED, CONTRACTOR TO PROVIDE PROPOSALS AND SAMPLES FOR APPROVAL PRIOR TO ORDER
- CONTRACTOR TO COMPLY WITH OR BUILDING CONTROL REQUIREMENTS

Dimensions based on topographical survey by EPC commercial surveys Ltd  
All dimensions must be checked on site and not scaled from this drawing  
© Mark Fairhurst Ltd.

**mark fairhurst ARCHITECTS**

48A Union Street, London, SE1 1TD. T 020 7407 7070. E info@mark-fairhurst.co.uk  
Project: Cock Tavern, 23 Phoenix Road, London NW1 1HB

Client: Flamestrike Ltd.

Drawing title: New Rear Extension Details 1

Scale: 1:10@A3, 1:5@A1 Date: 07.06.16 Drawn by: GM

Project number: 1250 Drawing number: WD202

Status: DETAILED DESIGN Revision: B