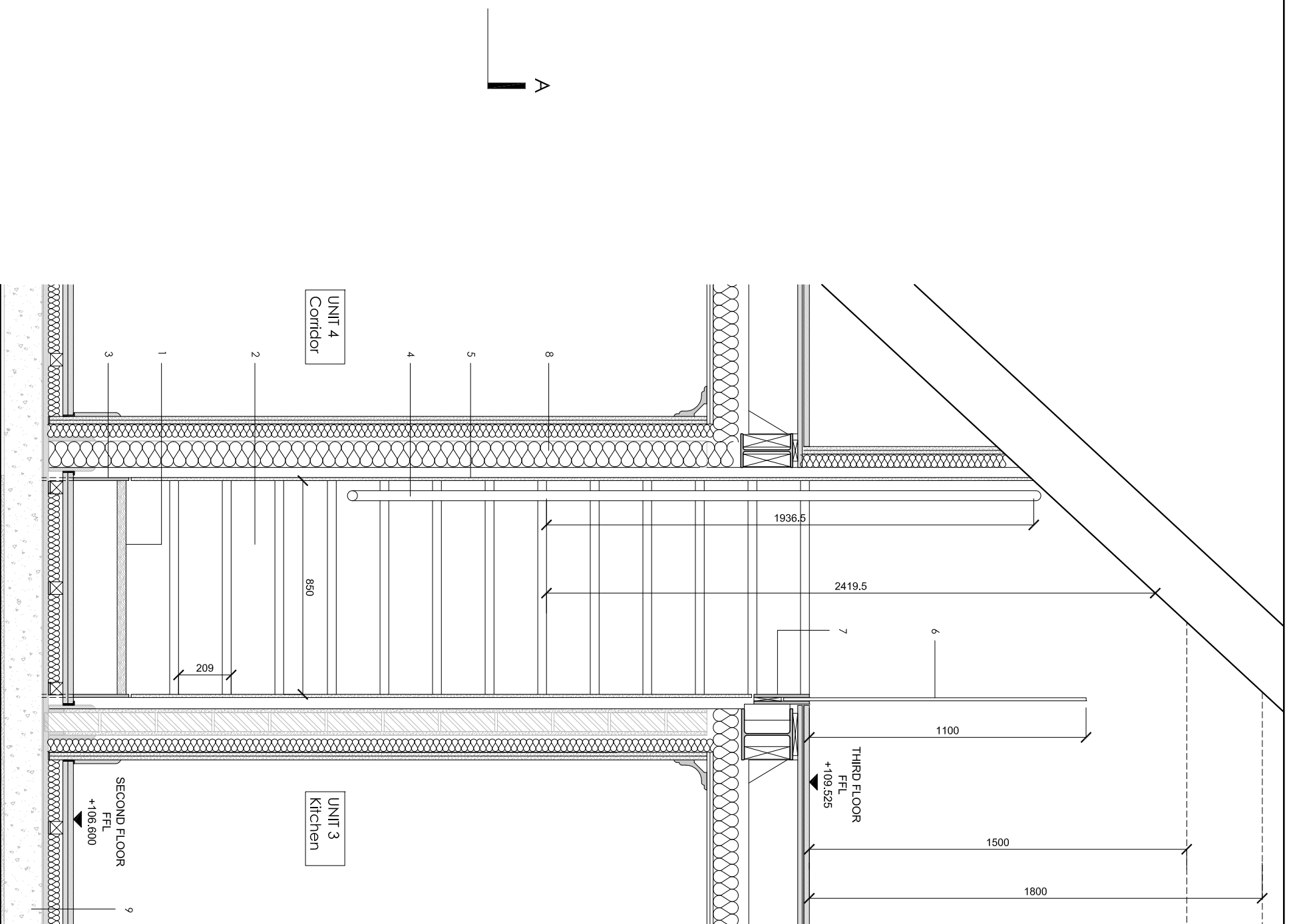


1 UNIT 5 STAIR PLAN LAYOUT
300



2 UNIT 5 STAIR SECTION AA
300

Notes

 EXISTING PARTITION RETAINED

LEGEND

1. 35mm THICK HARDWOOD TREAD STAINED TO APPROVED COLOUR SAMPLE.
2. 20mm THICK HARDWOOD RISER STAINED TO APPROVED COLOUR SAMPLE.
3. 12mm THICK PAINTED STEEL STRINGER BUILT INTO WALL FINISHES TO SE SPEC.
4. 40mm DIAMETER OAK HANDRAIL BOLTED TO WALL WITH COUNTERSUNK FININGS.
5. STUD PARTITION WITH 12.5mm SOUNDBLOC BOARD FINISH.
6. 12mm TOUCHENED GLASS BALUSTRADE.
7. 12mm STEEL PLATES TO STRUCTURAL ENGINEERS SPEC.
8. 100mm MINERAL WOOL INSULATION TO KP ACOUSTICS SPEC.
9. EXISTING CONCRETE FLOOR

- THE SUBCONTRACTOR IS TO COMPLETE THE DESIGN OF THE STAIR AND BALUSTRADE TO MEET STRUCTURAL AND SAFETY REQUIREMENTS BS 5395 TYPE OF ACTIVITY/CATEGORY TO BS 6399-1 (domestic and residential activities)
- BEFORE STARTING WORK ON THE STAIR AND BALUSTRADE TAKE SITE DIMENSIONS, RECORD ON SHOP DRAWINGS AND USE TO ENSURE ACCURATE FABRICATION
- STRINGER CONNECTION DETAILS TO STRUCTURAL ENGINEERS SPEC.
- FOLLOW MANUFACTURERS RECOMMENDATIONS FOR ALL INSTALLATIONS
- REFER TO RELATIVE CONSULTANTS REPORTS FOR FURTHER DETAILS
- TO BE READ IN CONJUNCTION WITH STRUCTURAL ENGINEER DRAWINGS
- TO BE READ IN CONJUNCTION WITH MECHANICAL ENGINEER DRAWINGS
- 1 HOUR FIRE RATING TO ALL STRUCTURAL ELEMENTS.
- 1 HOUR FIRE RATING TO ALL INTERNAL PARTITIONS BETWEEN UNITS
- 30 MIN. FIRE RATING TO ALL INTERNAL PARTITIONS
- IF THE MATERIAL IS NOT PRESCRIBED, CONTRACTOR TO PROVIDE PROPOSALS AND SAMPLES FOR APPROVAL PRIOR TO ORDER
- CONTRACTOR TO COMPLY WITH OR BUILDING CONTROL REQUIREMENTS
- REFER TO ACOUSTIC REPORT AND TO INTERNAL DETAIL SERIES WD305-308 FOR PARTITIONS BUILD UP

Revision	Date	Reason	Initial
/	19.05.16	DETAIL DESIGN	GM

Dimensions based on topological survey by EPC commercial surveys Ltd
All dimensions must be checked on site and not scaled from this drawing
© Mark Fairhurst Ltd.

mark fairhurst ARCHITECTS

48A Union Street, London, SE1 1TD, T 020 7407 7070, E info@mark-fairhurst.co.uk
Project: Cock Tavern, 23 Phoenix Road, London NW1 1HB
Client: Flamesrike Ltd.

Drawing title: Proposed Stair Layout Unit 5, Plan and Section A
Scale: 1:40@A3, 1:20@A1 Date: 19.05.16 Drawn by: GM
Project number: 1250 Drawing number: WD300
Status: DETAIL DESIGN Revision: /