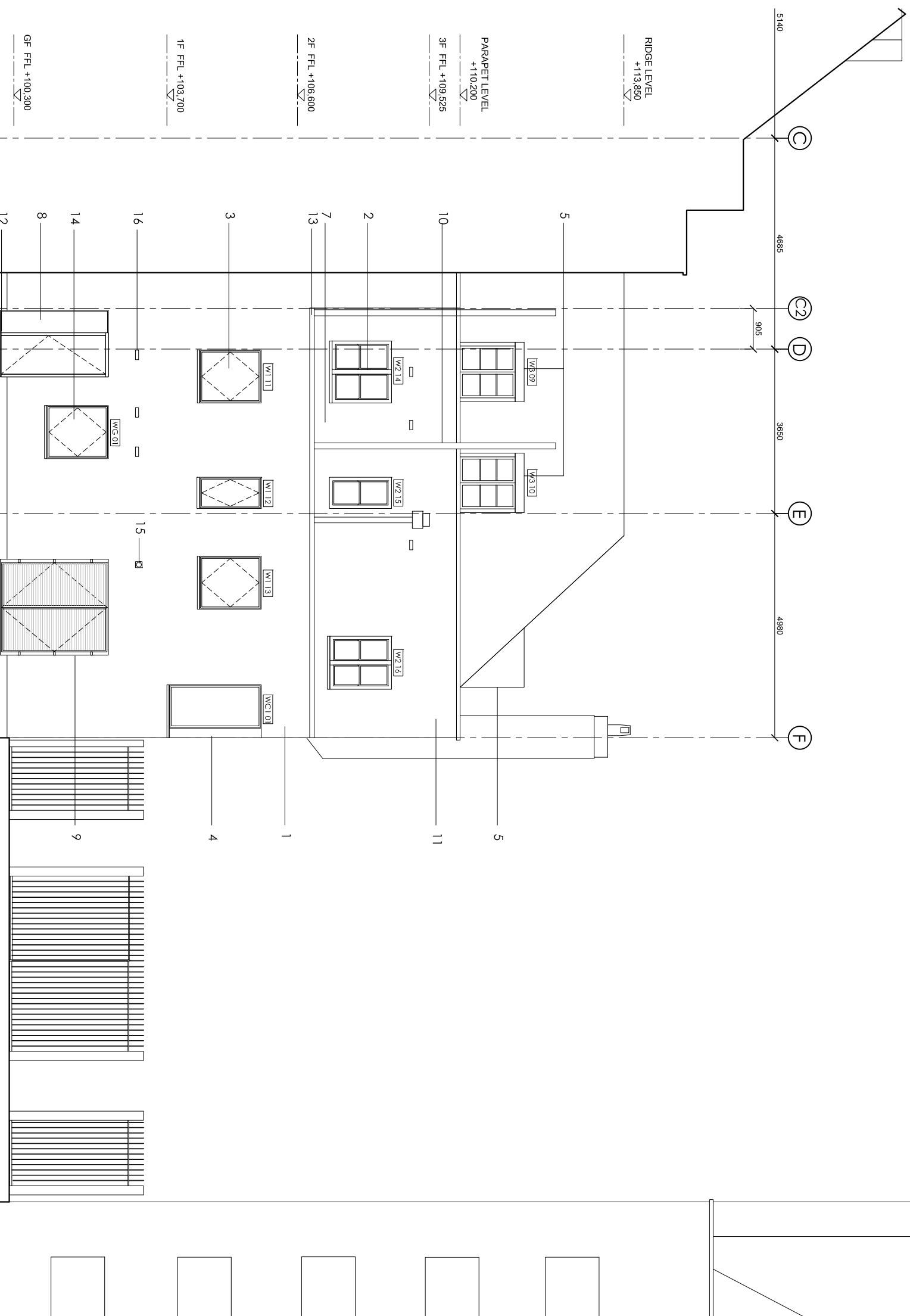


- Notes
- TO BE READ IN CONJUNCTION WITH STRUCTURAL ENGINEER DRAWINGS
 - TO BE READ IN CONJUNCTION WITH MECHANICAL ENGINEER DRAWINGS
 - 1 HOUR FIRE RATING TO ALL STRUCTURAL ELEMENTS.
 - 1 HOUR FIRE RATING TO ALL INTERNAL PARTITIONS BETWEEN DIFFERENT UNITS
 - 30 MIN. FIRE RATING TO ALL INTERNAL PARTITIONS AND FLOORS
 - ALL WORKS TO COMPLY WITH BUILDING REGULATIONS

LEGEND

1. SELF FINISH INSULATED RENDURED WALL
2. EXISTING SASH WINDOW IN ABEYANCE
3. PPC ALUMINIUM TILT & TURN OPERABLE WINDOWS WITH STRUCTURAL GLAZED SASH
4. FRAMELESS FIXED GLAZED CORNER WINDOW
5. PAINTED ZINC CLAD DORMER
6. OUTLINE TO WALKER HOUSE
7. NEW SOIL VENT PIPE AND RAIN WATER PIPE WITH HOPPER LOCATION REMAINED
8. PPC ALUMINIUM GLAZED SCREEN WITH EXIT DOOR
9. FLUSH PPC STEEL OPERABLE LOUVERED SCREEN REF: LANG&FULTON DELTA WING 90
10. EXISTING SVP TO BE REPLACED
11. EXISTING RENDER MADE GOOD + REPAINTED
12. INSULATED RENDER BASE
13. RECONSTITUTED STONE COPING
14. OBRSCURED GLASS WINDOW WITH RESTRICTED OPENER
15. BOLTER FLUE
16. VENT AXIA AIR BRICK WHITE



Revision	Date	Reason	Initial
/	27.04.16	DETAIL DESIGN	GM
A	07.06.16	DETAIL DESIGN	GM
B	14.06.16	DETAIL DESIGN	GM
C	06.09.16	DETAIL DESIGN	GM

Dimensions based on topological survey by EPC commercial surveys Ltd
 All dimensions must be checked on site and not scaled from this drawing
 © Mark Fairhurst Ltd.

mark fairhurst ARCHITECTS

48A, Union Street, London, SE1 1TD, T:020 7407 7070, E:info@mark-fairhurst.co.uk
 Project: Cock Tavern, 23 Phoenix Road, London NW1 1HB
 Client: Flamesstrike Ltd.

Drawing title: Proposed North East Elevation

Scale: 1:100@A3, 1:50@A1 Date: 14.06.16 Drawn by: GM

Project number: 1250 Drawing number: WD133

Status: DETAIL DESIGN Revision: C