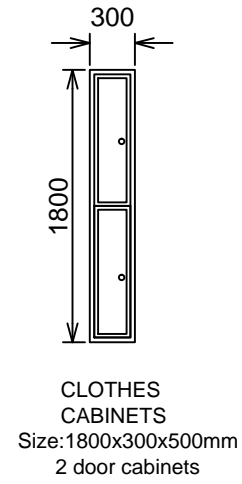
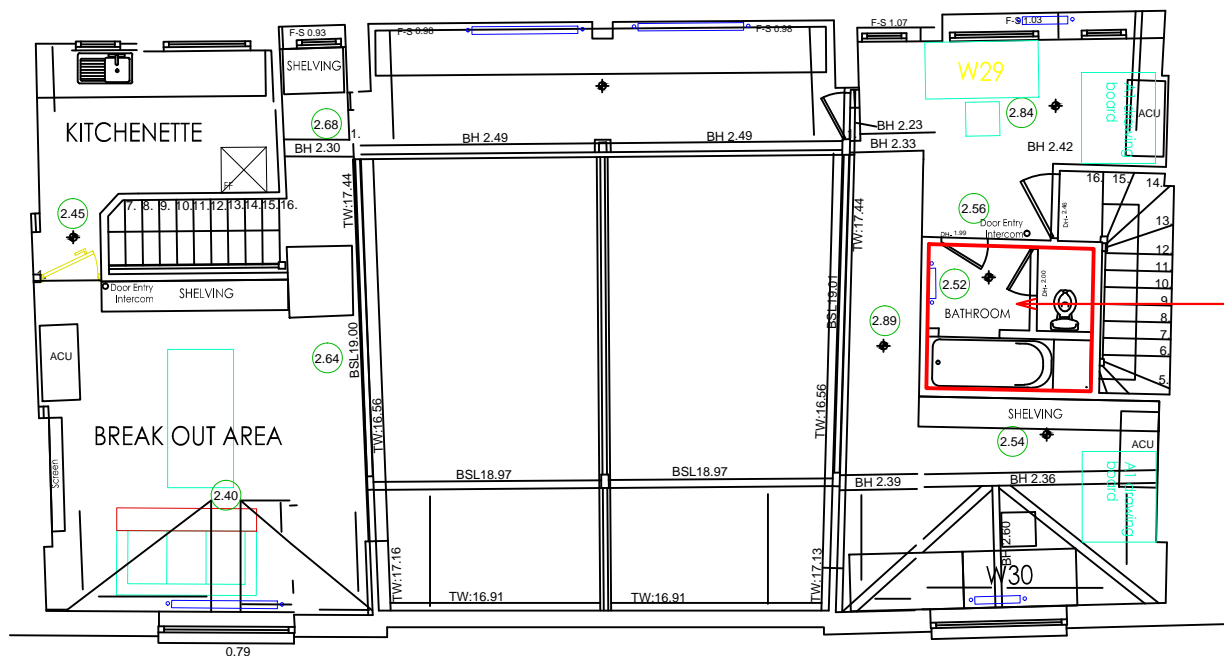


GROUND FLOOR PLAN

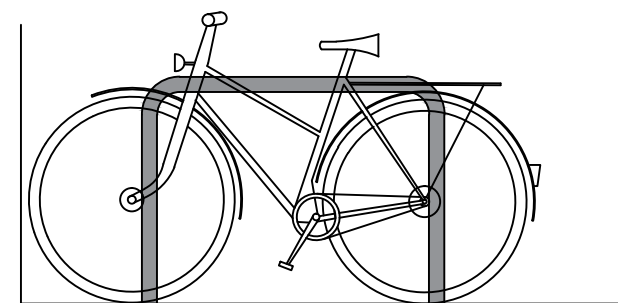
New cycle storage room with clothes cabinets



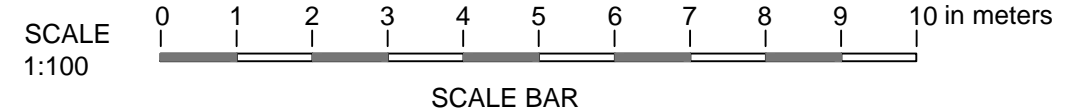
FIRST FLOOR PLAN



SECOND FLOOR PLAN



PROPOSED SHEFFIELD BICYCLE STAND



Rev. B - Dec. 2016 - Proposed cycle storage changed to Sheffielded Bicycle stands and only 2 double clothes cabinets provided after meeting with planning officer.

Rev. A - Sept. 2016 - Proposed cycle storage changed to Josta horizontal stands as requested by planning officer.

| | |
|--|---------------|
| PROJECT: | |
| OFFICES, 13-15 CANFIELD PLACE, LONDON. NW6 3BT | |
| TITLE: | |
| DETAILS FOR DISCHARGE OF CONDITION 3. REF: 2015/4095/P | |
| MISTRY DESIGN | |
| Drawn: P. S. MISTRY | SCALE: 1:100 |
| Tel: 07958944584 | Page Size: A3 |
| Date: AUGUST 2016 | |
| DRAWING NO: 1551/01 Rev.B | |