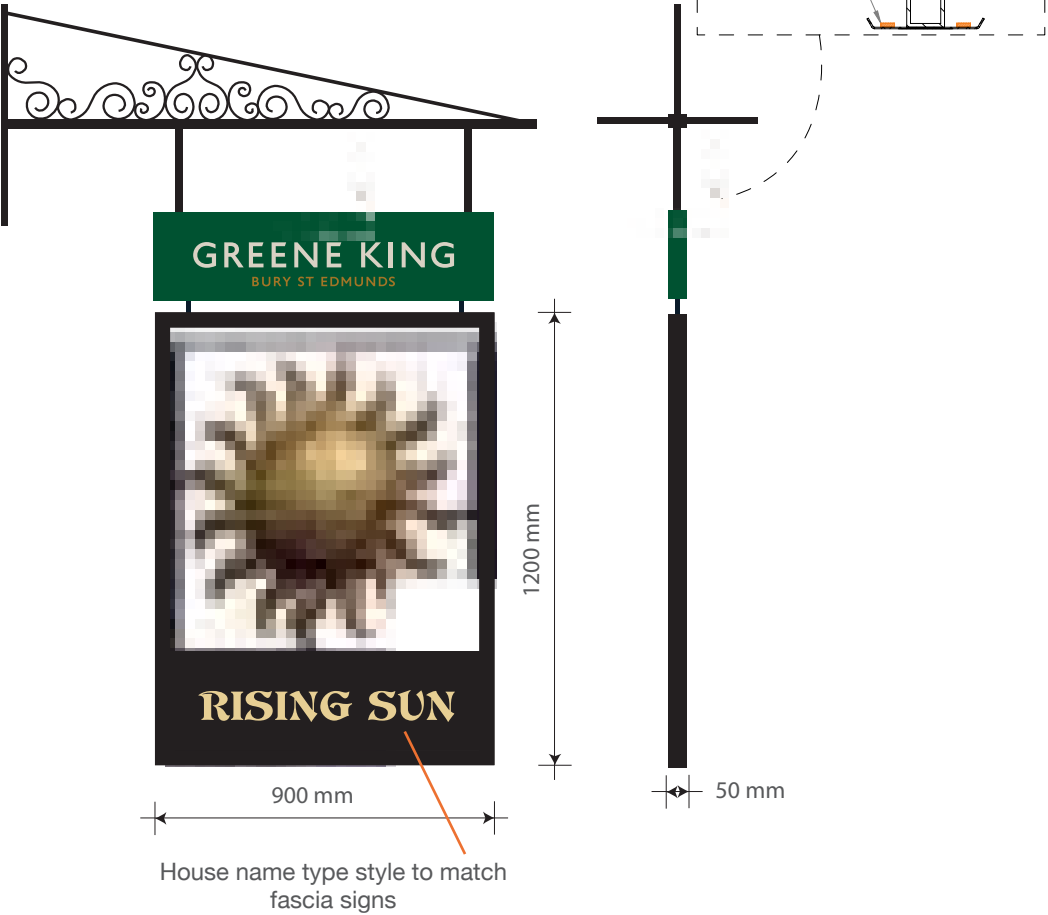
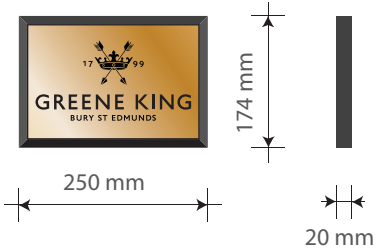


ITEM 01 (Qty 1)  
Retain existing bracket work and pictorial sign.  
Green king header to display a 3D crown and  
individual letters.  
LED illumination.  
Refurbish existing 3D pictorial and add house  
name in new font to match fascia sign.  
Scale 1:20



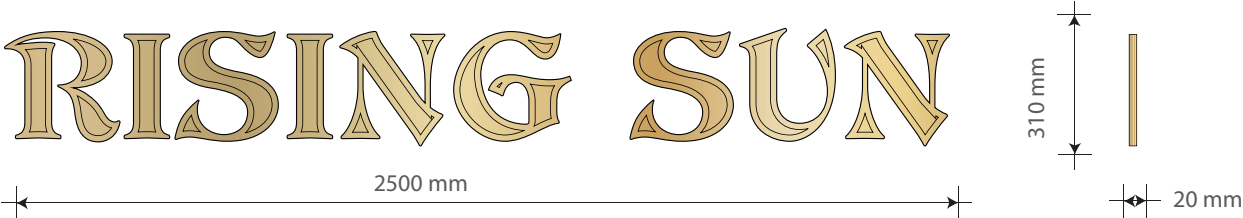
Height above ground: 5000mm

ITEM 02 (Qty 1)  
An engraved and infilled brass  
plaque complete with a timber  
backing board.  
Scale 1:10



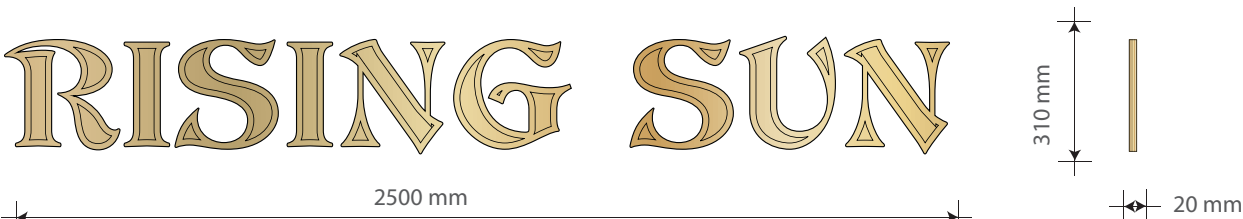
Height above ground: 1500mm

ITEM 03A (Qty 1)  
New Individual gold letters with black coachline.  
Existing trough light illumination.  
**Alarm boxes to be repositioned by others.**  
Scale 1:20



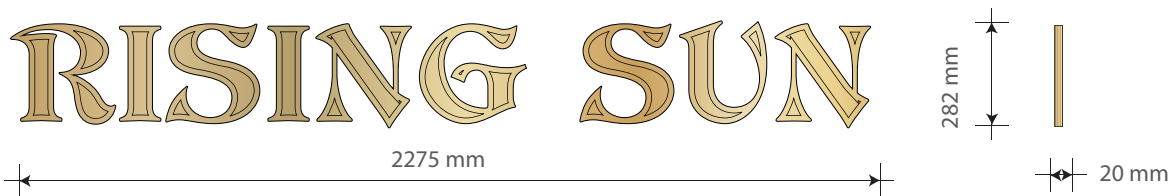
Height above ground: 4500mm

ITEM 03B (Qty 1)  
New Individual gold letters with black coachline.  
Existing trough light illumination.  
**Alarm boxes to be repositioned by others.**  
Scale 1:20



Height above ground: 4500mm

ITEM 03C (Qty 1)  
New Individual gold letters with black coachline.  
Existing trough light illumination.  
**Alarm boxes to be repositioned by others.**  
Scale 1:20



Height above ground: 4500mm

GREENE KING  
RISING SUN  
46 TOTENHAM COURT RD,  
LONDON,  
W1T 2ED

124046 (REV C)  
19/12/16 - MKF

**!a**  
ashleighsigns.co.uk

**ITEM 06A (Qty 1)**  
Recover existing awnings.



House name type style to match  
fascia signs

Height above ground: 4000mm

**ITEM 06B (Qty 1)**  
Recover existing awnings.



House name type style to match  
fascia signs

Height above ground: 4000mm

**ITEM 07A (Qty 1)**  
Dusted crystal etch vinyl applied  
to windows.  
Scale 1:10



470 mm  
Height above ground: 1500mm

**ITEM 07B (Qty 1)**  
Dusted crystal etch vinyl applied  
to windows.  
Scale 1:10



470 mm  
Height above ground: 1500mm

**ITEM 07C (Qty 1)**  
Dusted crystal etch vinyl applied  
to windows.  
Scale 1:10



470 mm  
Height above ground: 1500mm

**ITEM 07D (Qty 1)**  
Dusted crystal etch vinyl applied  
to windows.  
Scale 1:10



470 mm  
Height above ground: 1500mm

**ITEM 07E (Qty 1)**  
Dusted crystal etch vinyl applied  
to windows.  
Scale 1:10



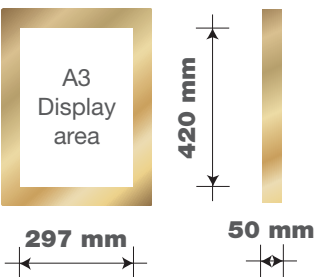
470 mm  
Height above ground: 1500mm

**ITEM 07F (Qty 1)**  
Dusted crystal etch vinyl applied  
to windows.  
Scale 1:10



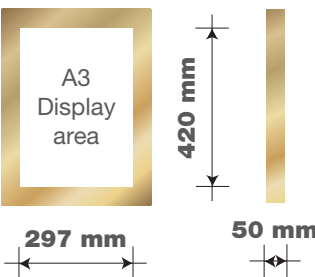
470 mm  
Height above ground: 1500mm

**ITEM 08A (Qty 1)**  
Brass menu case.  
LED illumination.  
Scale 1:20



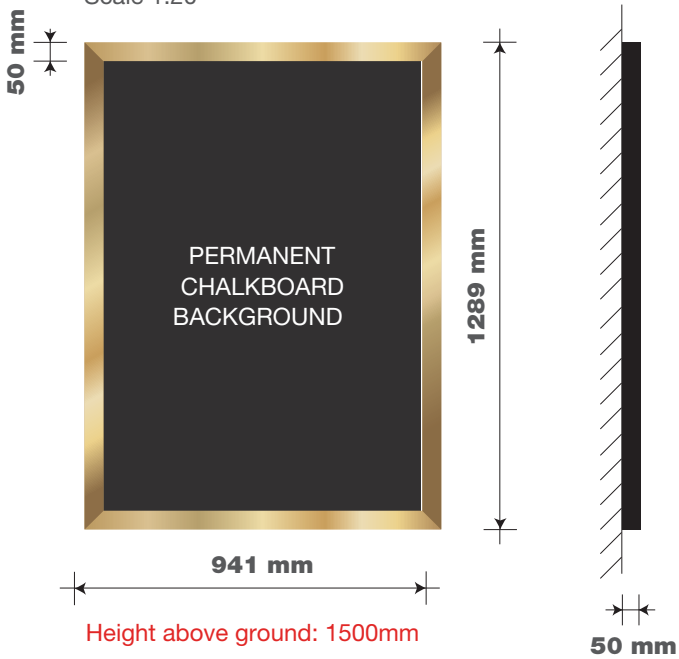
Height above ground: 1500mm

**ITEM 08B (Qty 1)**  
Brass menu case.  
LED illumination.  
Scale 1:20



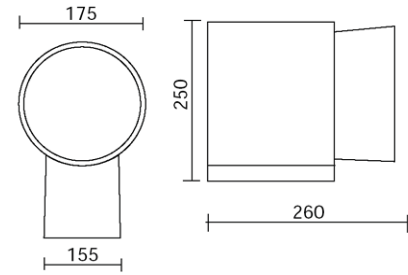
Height above ground: 1500mm

**ITEM 09 (Qty 1)**  
Brass poster frame, with a permanent  
chalkboard background.  
Supplied with an extra double sided  
chalkboard or corex insert.  
Scale 1:20



Height above ground: 1500mm

**ITEM 10 (Qty 3)**  
Narrow beam Mono Light 175 LED emission wall mounted luminaire.  
Die-cast aluminium construction finished in  
powder coated silver.  
Tempered safety glass lamp cover to single emmission

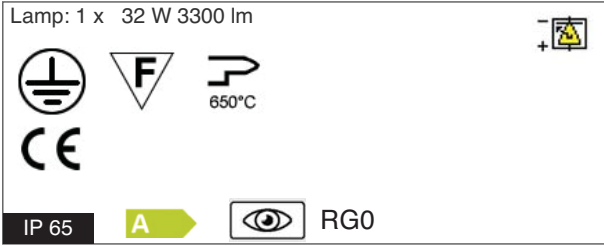
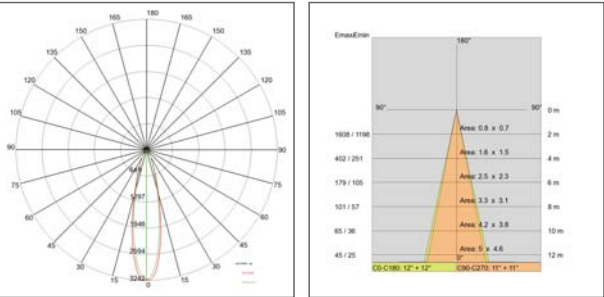


Use:  
outside, led  
Installation:  
Wall mounted  
Body/structure:  
EN AB-47100 Die-cast aluminium body  
Coating:  
Polyester powder coating with special treatment for outdoor use  
Colour:  
White  
Optic/reflector:  
Metacrylate LED lens  
Equipment:  
Silicon rubber gaskets  
Glass/diffuser:  
Clear tempered glass  
Cable gland:  
Silicon rubber cable gland PG11  
Control gear:  
Integrated LED diodes ballast, stabilized output current 1050mA dc



Voltage:  
220-240V 50/60Hz  
Beam angle :  
Symmetric narrow beam 24 Degrees  
Insulation class:  
Insulation class 1  
Weight:  
4,400 kg  
IP rating:  
65  
Glow wire:  
[650 °C]  
Lamp included:  
Yes  
Luminaire wattage:  
36 W  
Luminous flux:  
2884.9 lm  
Lamp/led rated life:  
50000 hours L80 B20  
Colour temperature:  
3000K  
CRI:  
80  
Color constancy:  
4 SDCM

**MONO LIGHT 175 LED**  
COD: E5680-LBC-24



**ITEM 11 (Qty 1)**  
**DELETED**

GREENE KING  
**RISING SUN**  
46 TOTENHAM COURT RD,  
LONDON,  
W1T 2ED

**124046 (REV C)**  
19/12/16 - MKF

**!a**  
ashleighsigns.co.uk



## EXISTING



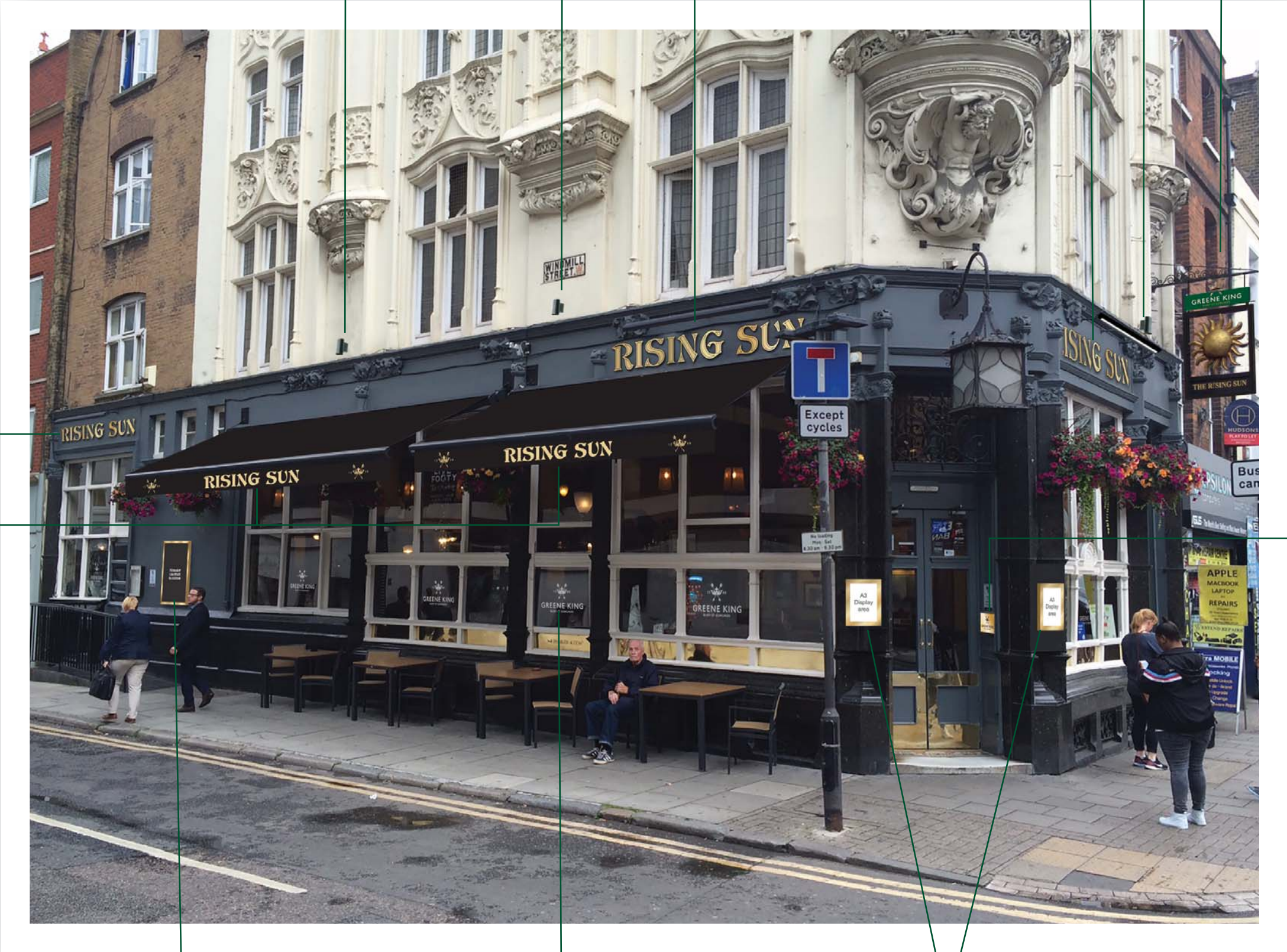
GREENE KING  
**RISING SUN**  
46 TOTENHAM COURT RD,  
LONDON,  
W1T 2ED

**124046 (REV C)**  
19/12/16 - MKF





PROPOSED

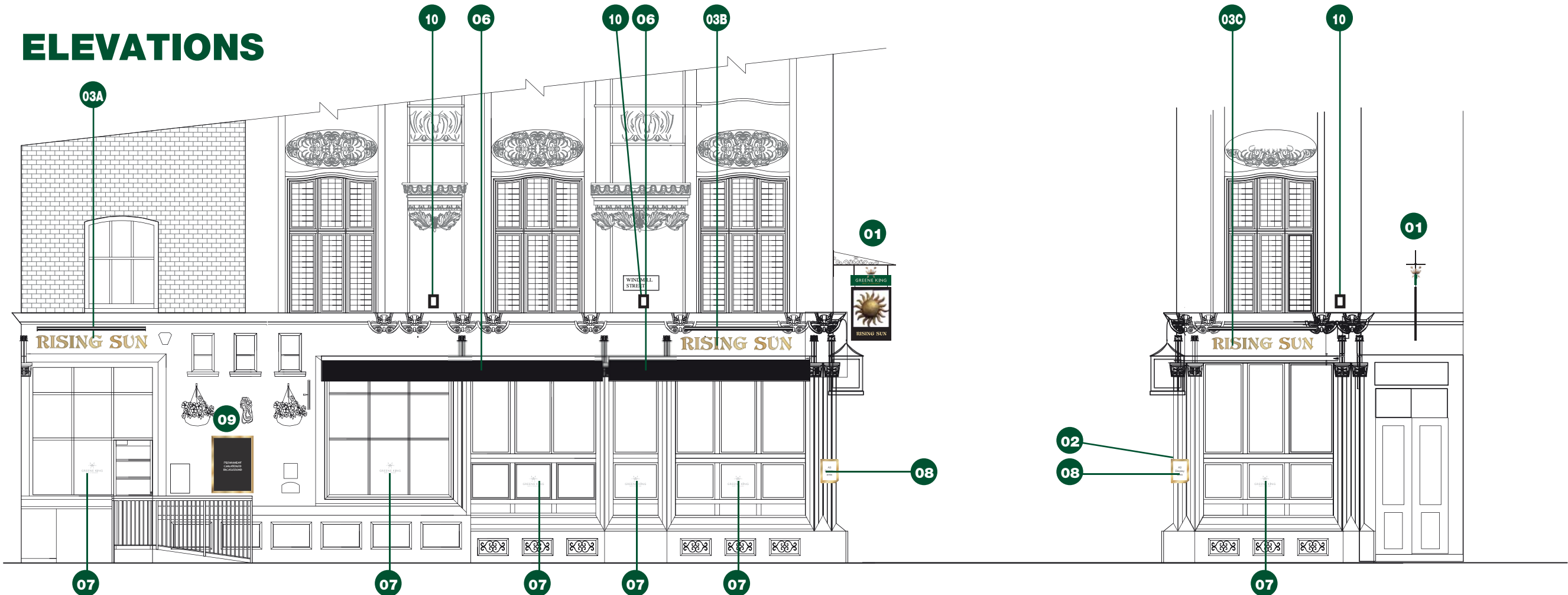


GREENE KING  
**RISING SUN**  
46 TOTENHAM COURT RD,  
LONDON,  
W1T 2ED

**124046 (REV C)**  
19/12/16 - MKF



ELEVATIONS



PROPOSED WINDMILL STREET ELEVATION @ 1:100



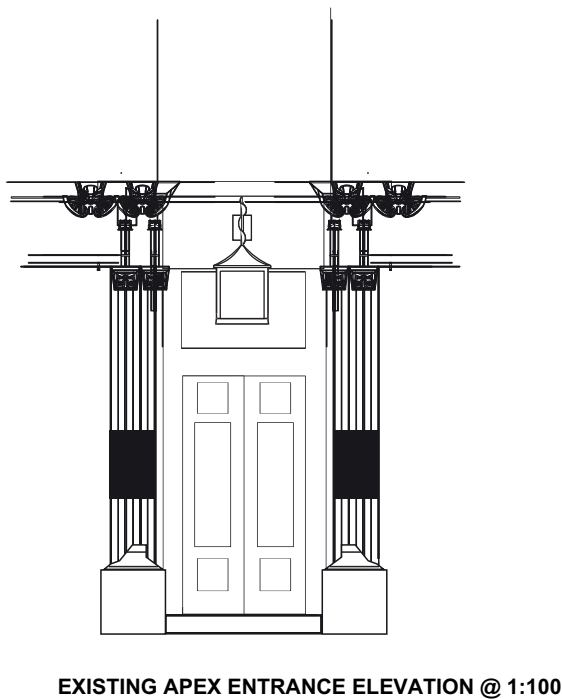
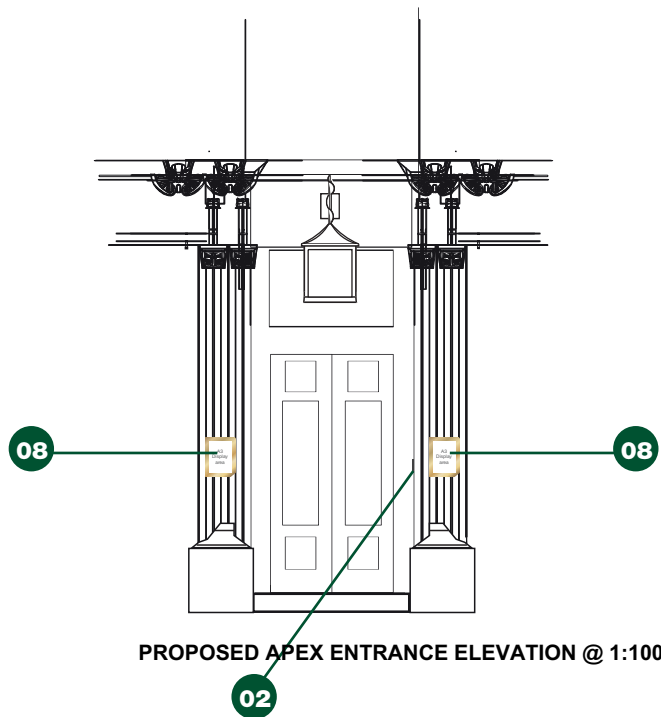
EXISTING WINDMILL STREET ELEVATION @ 1:100

GREENE KING  
**RISING SUN**  
46 TOTENHAM COURT RD,  
LONDON,  
W1T 2ED

**124046 (REV C)**  
19/12/16 - MKF

**!a**  
ashleighsigns.co.uk

ELEVATIONS

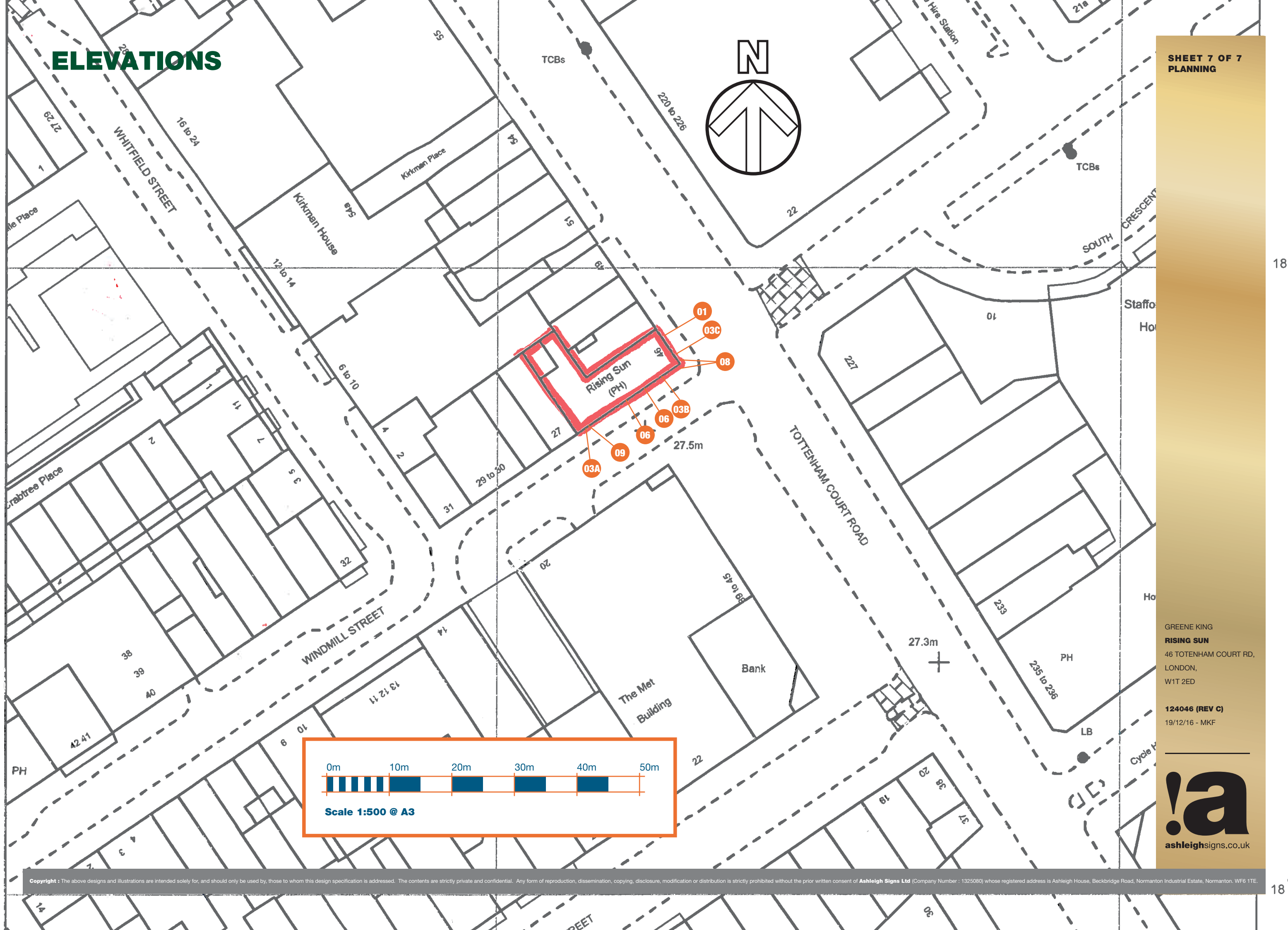


GREENE KING  
**RISEING SUN**  
46 TOTENHAM COURT RD,  
LONDON,  
W1T 2ED

**124046 (REV C)**  
19/12/16 - MKF



ELEVATIONS



GREENE KING  
**RISING SUN**  
46 TOTENHAM COURT RD,  
LONDON,  
W1T 2ED

**124046 (REV C)**  
19/12/16 - MKF

