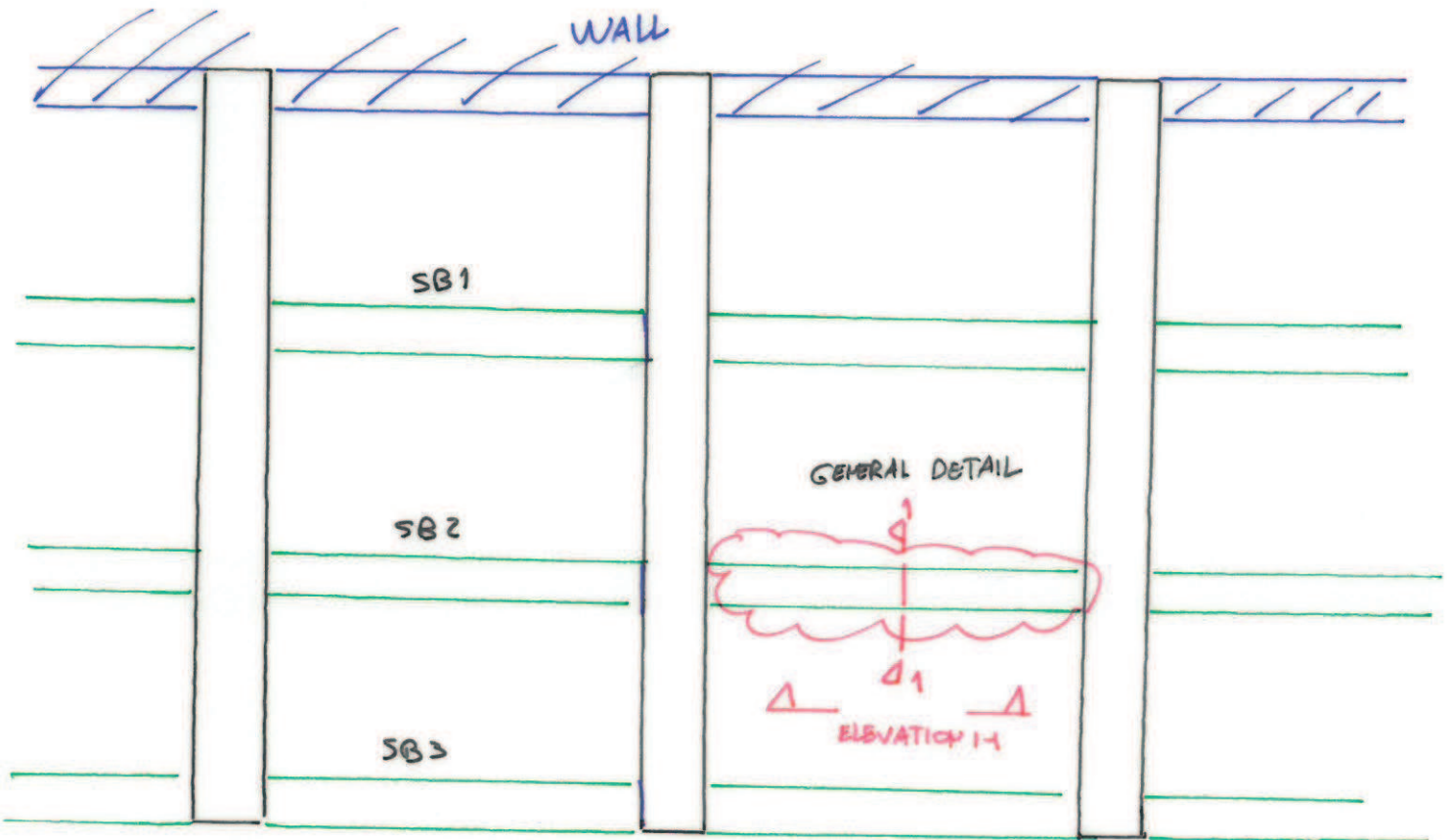
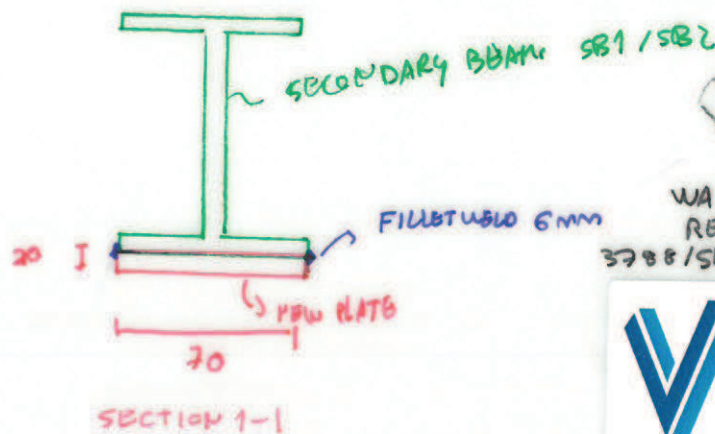
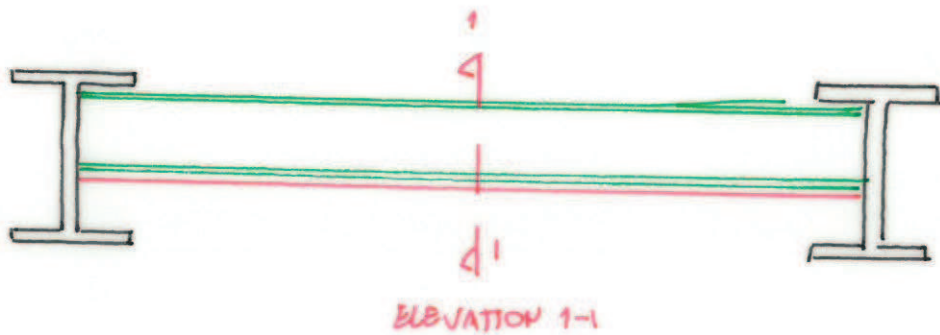


# SECONDARY BEAMS - REPAIRS → SB1 AND SB2

ALL STEEL 355  
ALL STEEL GALVANISED OR PAINTED EQUIVALENT



→ GENERAL DETAIL FOR ALL SECONDARY BEAMS NEEDING REPAIRS



**PRELIMINARY**  
TBC PENDING  
TESTING  
RESULTS

WALKWAY - SECONDARY BEAM  
REPAIRS

3788/SK / 160808 / MR / 01



Structural and Civil Engineers

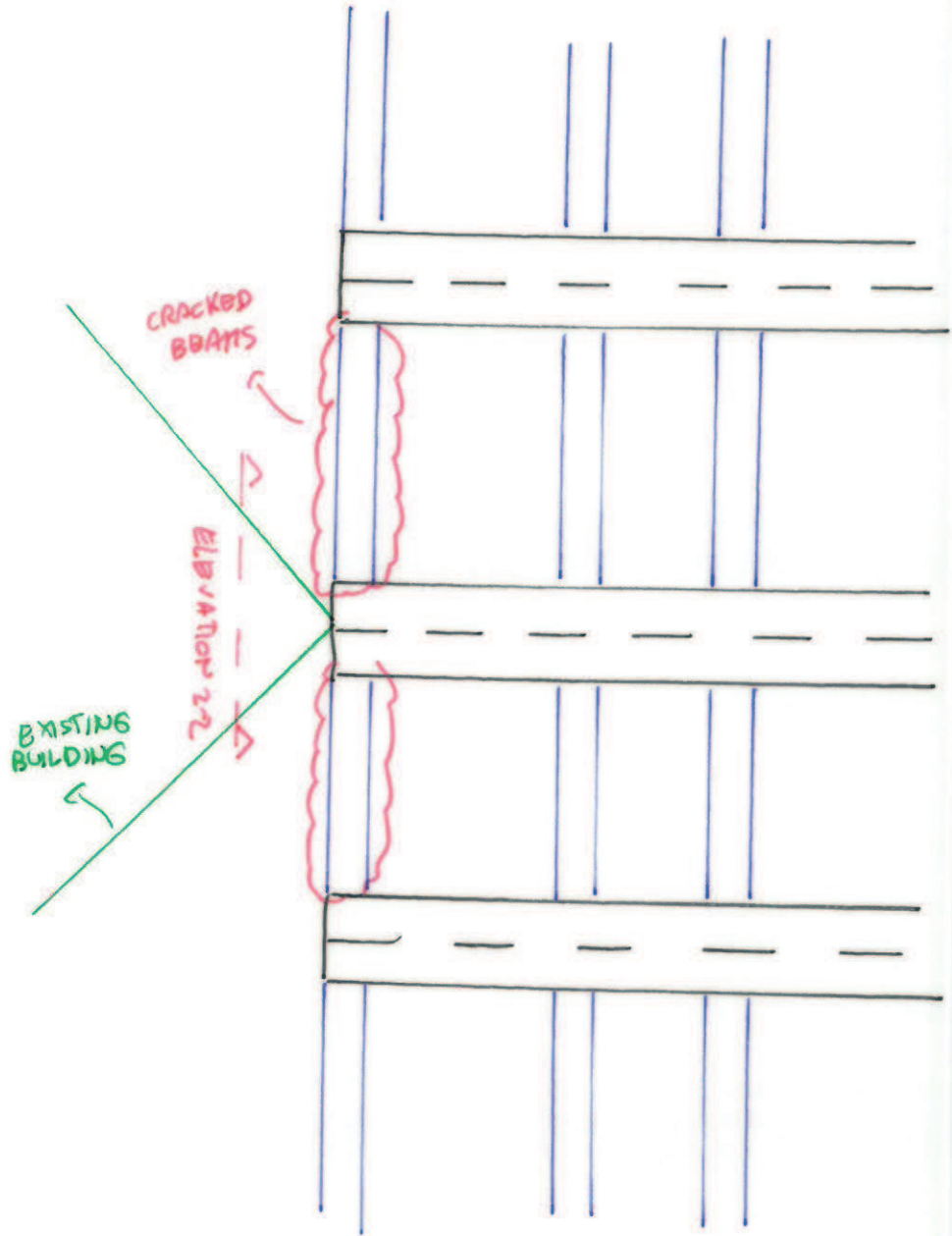
32 Lafene Street  
London  
SE1 2LX  
t +44 (0)20 7089 6800  
e london@walsh.co.uk

walsh.co.uk

SECONDARY BEAMS - REPAIRS -> SB3

ALL STEEL S/S

ALL STEEL GALVANISED OR PAINTED EQUIVALENT



WALKWAY - SECONDARY BEAMS REPAIRS  
3758 /SK/ 160808 / MPC / 02



WALSH

Structural and Civil Engineers

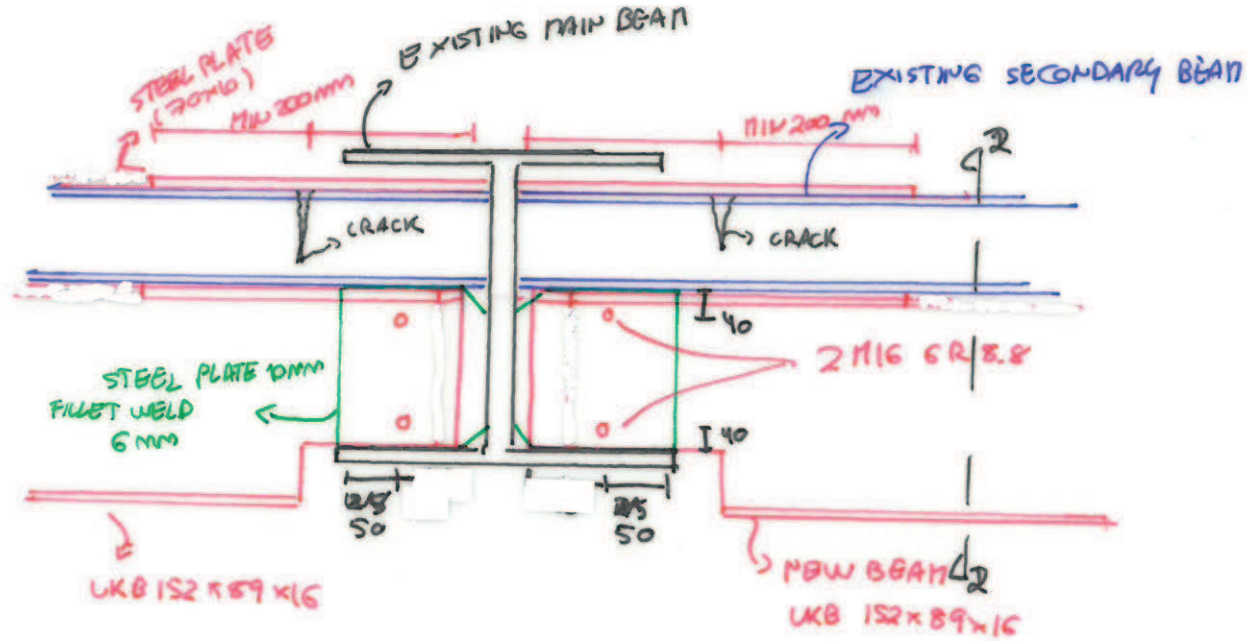
32 Lafone Street  
London  
SE1 2LX  
t. +44 (0)20 7089 6800  
e. london@walsh.co.uk

walsh.co.uk

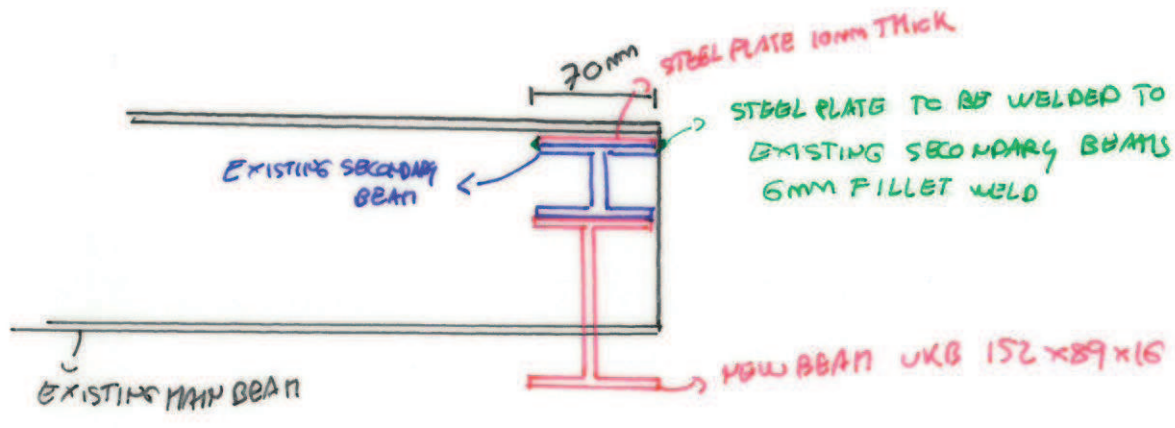
SECONDARY BEAMS - REPAIRS -> SB3

ALL STEEL 355

ALL STEEL GALVANISED OR PAINTED EQUIVALENT



ELEVATION 2-2



SECTION 2-2

WALKWAY - SECONDARY BEAMS REPAIR  
 3755/SK / 160808 / 17C/03



Structural and Civil Engineers  
 32 Lafone Street  
 London  
 SE1 2LX  
 t. +44 (0)20 7089 6800  
 e. london@walsh.co.uk  
 walsh.co.uk

WALKWAY REMEDIAL REPAIRS - P1

TRUSS SOLUTION

WALKWAY - REMEDIAL REPAIRS  
P1 -  
3788 / SK / 160908 / MPC / 101

PAGE No.

DATE

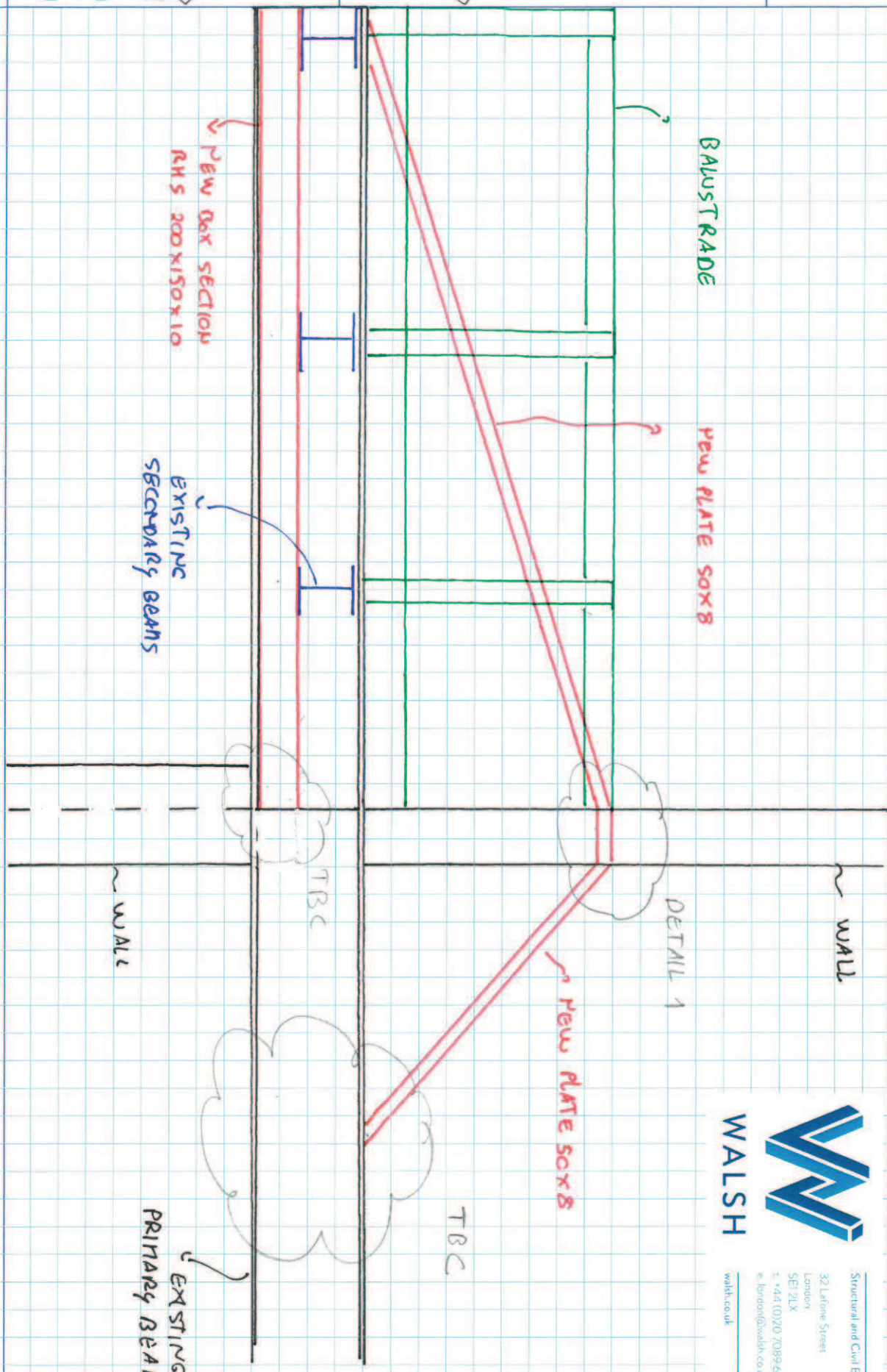
CALCS BY  
MPC

CHKD BY

PROJECT TITLE




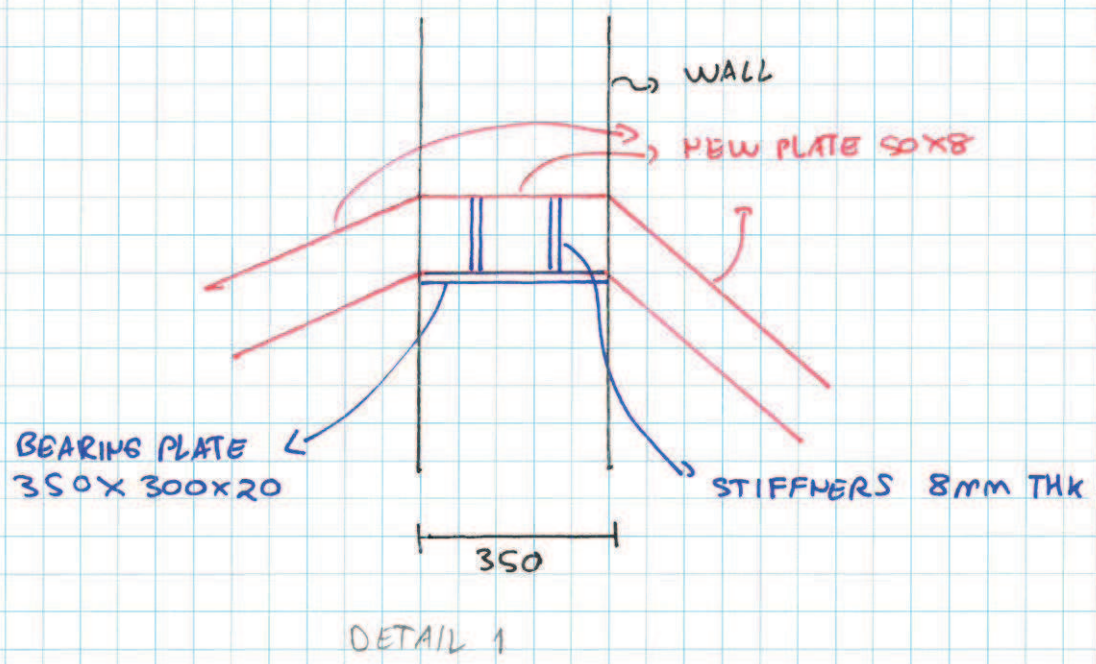
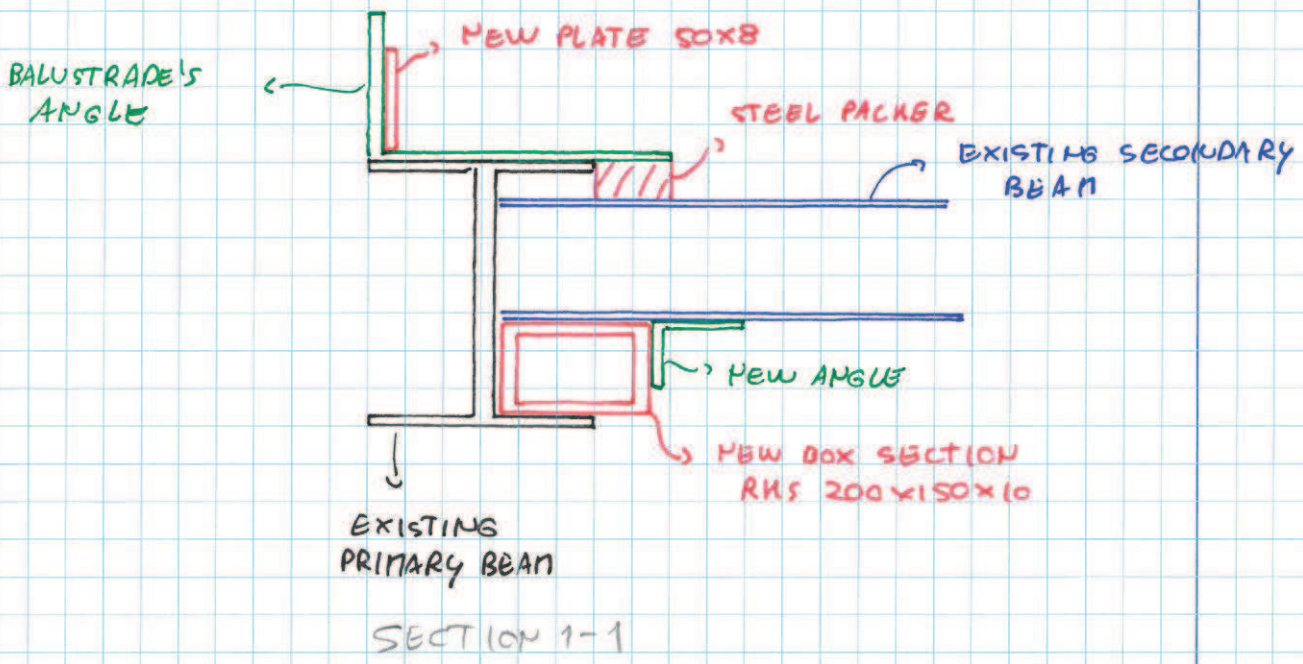
PROJECT No.  
3788  
ELEMENT REF.



WALSH

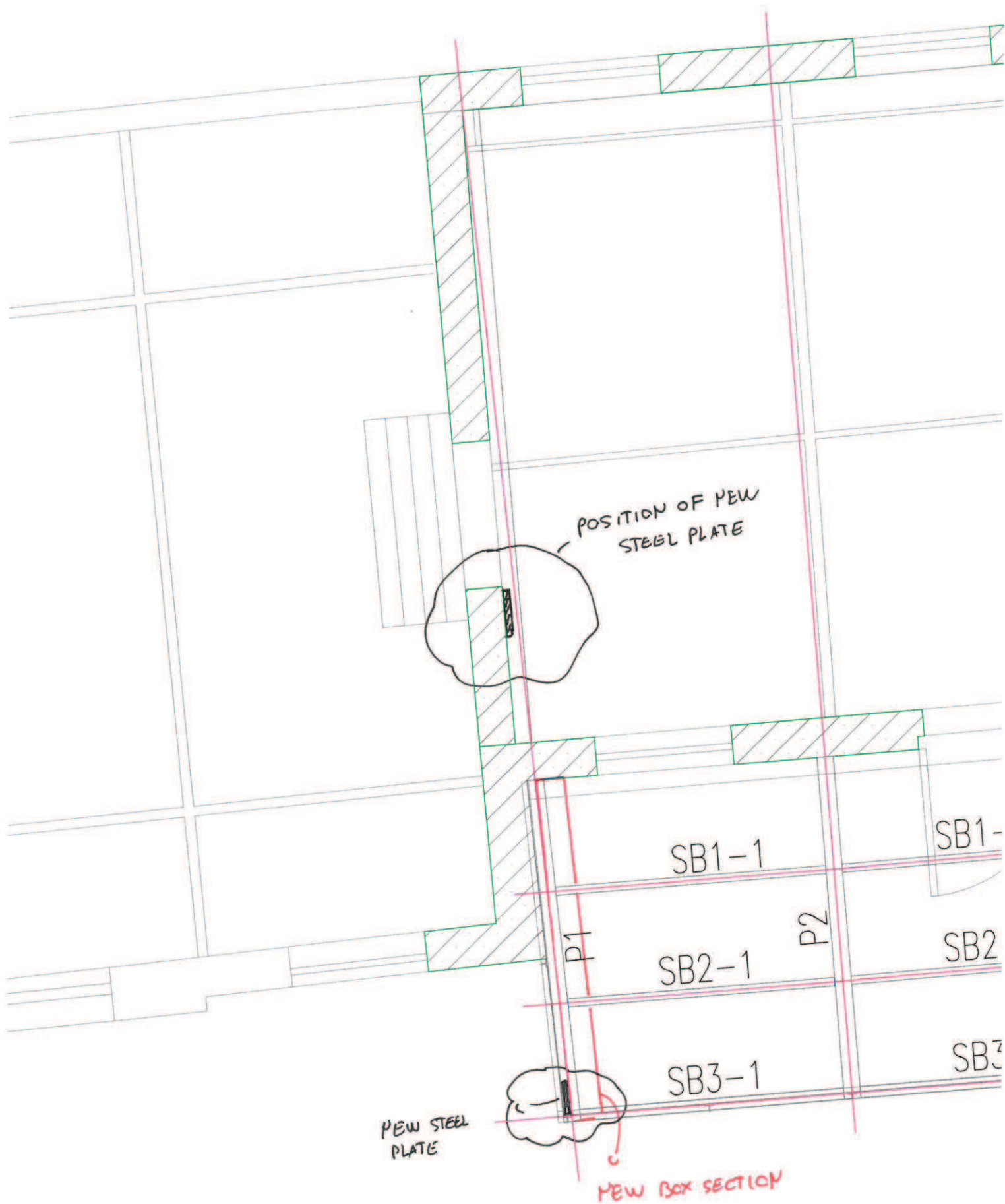
Structural and Civil Engineers  
32 Larkine Street  
London  
SE1 2LX  
t: +44 (0)20 7089 6800  
e: london@walsh.co.uk  
walsh.co.uk

|              |  |               |          |          |
|--------------|--|---------------|----------|----------|
| PROJECT No.  |  | PROJECT TITLE | CALCS BY | PAGE No. |
| ELEMENT REF. |  |               | CHKD BY  | DATE     |



WALKWAY - REMEDIAL REPAIRS - P1  
 3788 / SK / 160908 / MPC / 01

2



WALKWAY - REMEDIAL REPAIRS - P1  
 3788/SK/160908/MAC/01