

CORNER BEAM - SOLUTION 1

ALL STEEL 355

ALL STEEL GALVANISED OR PAINTED EQUIVALENT

THE NEW BEAM MUST GO THROUGH ALL THE BUILDINGS



6Δ

Δ 6

NEW STEEL BEAM

EXISTING EXTERIOR SECONDARY BEAMS

EXISTING INTERIOR SECONDARY BEAMS

WALL

EXISTING MAIN BEAMS

WALKWAY - CB01
3788 15K/1607 26/ MPC 101 - REV 01

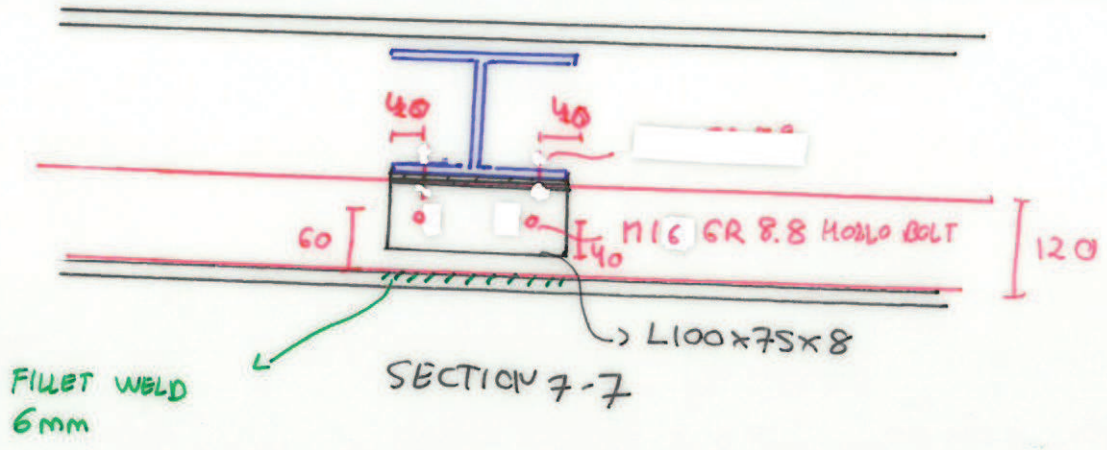
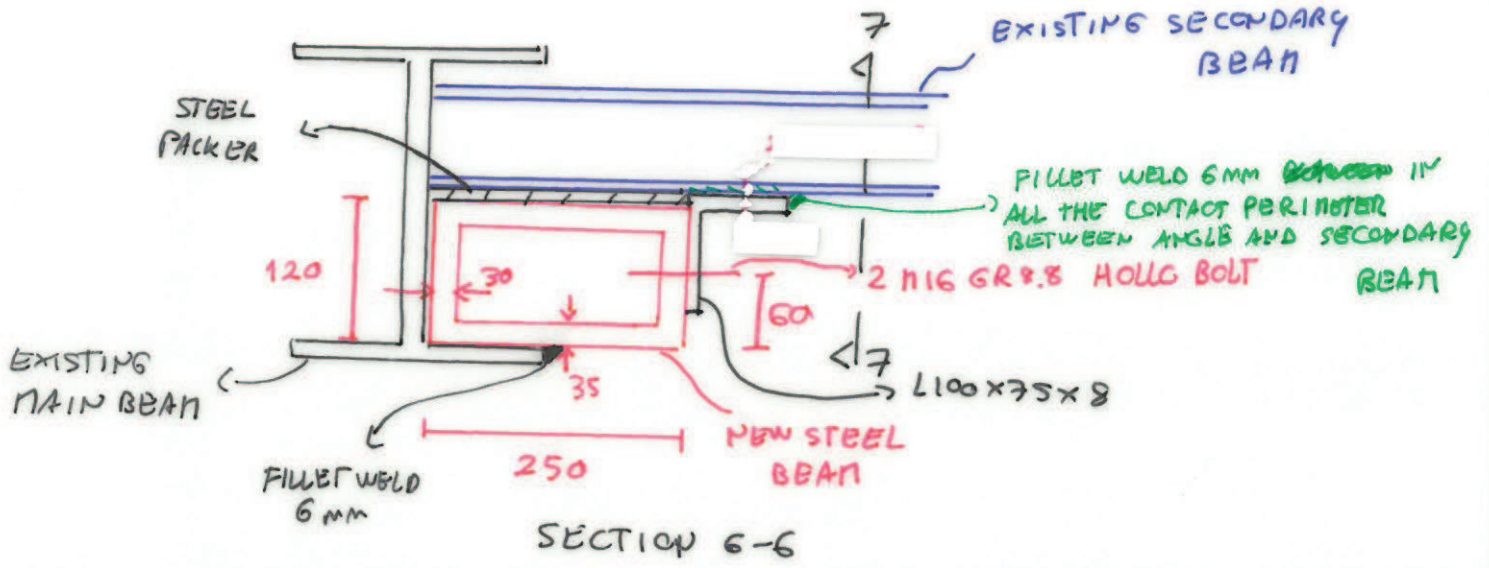


WALSH

Structural and Civil Engineers

32 Lafone Street
London
SE1 2LX
t. +44 (0)20 7089 6800
e. london@walsh.co.uk

walsh.co.uk

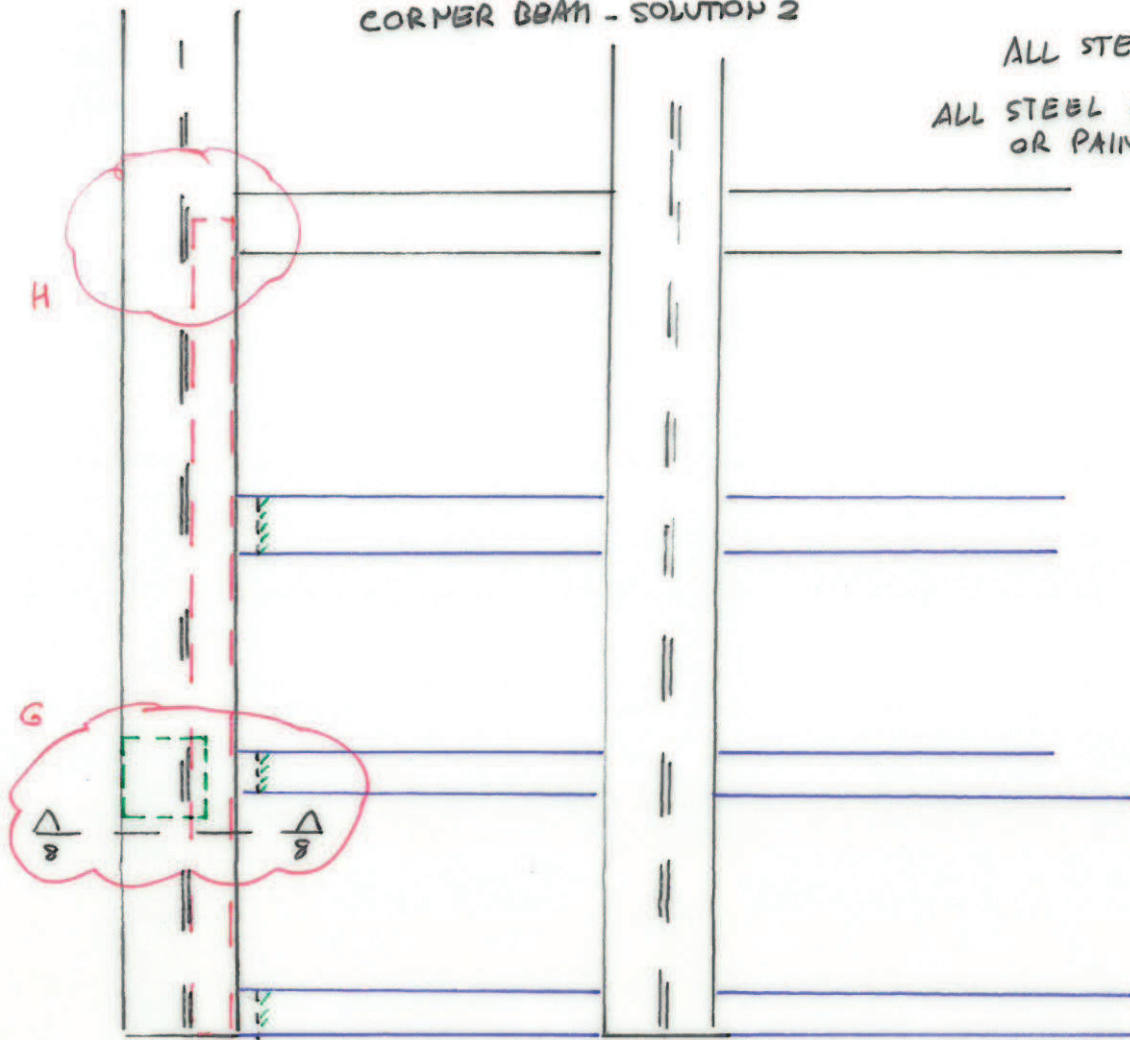


WALKWAY - CB01
 3788/SK/160726/MPC/02-REVd

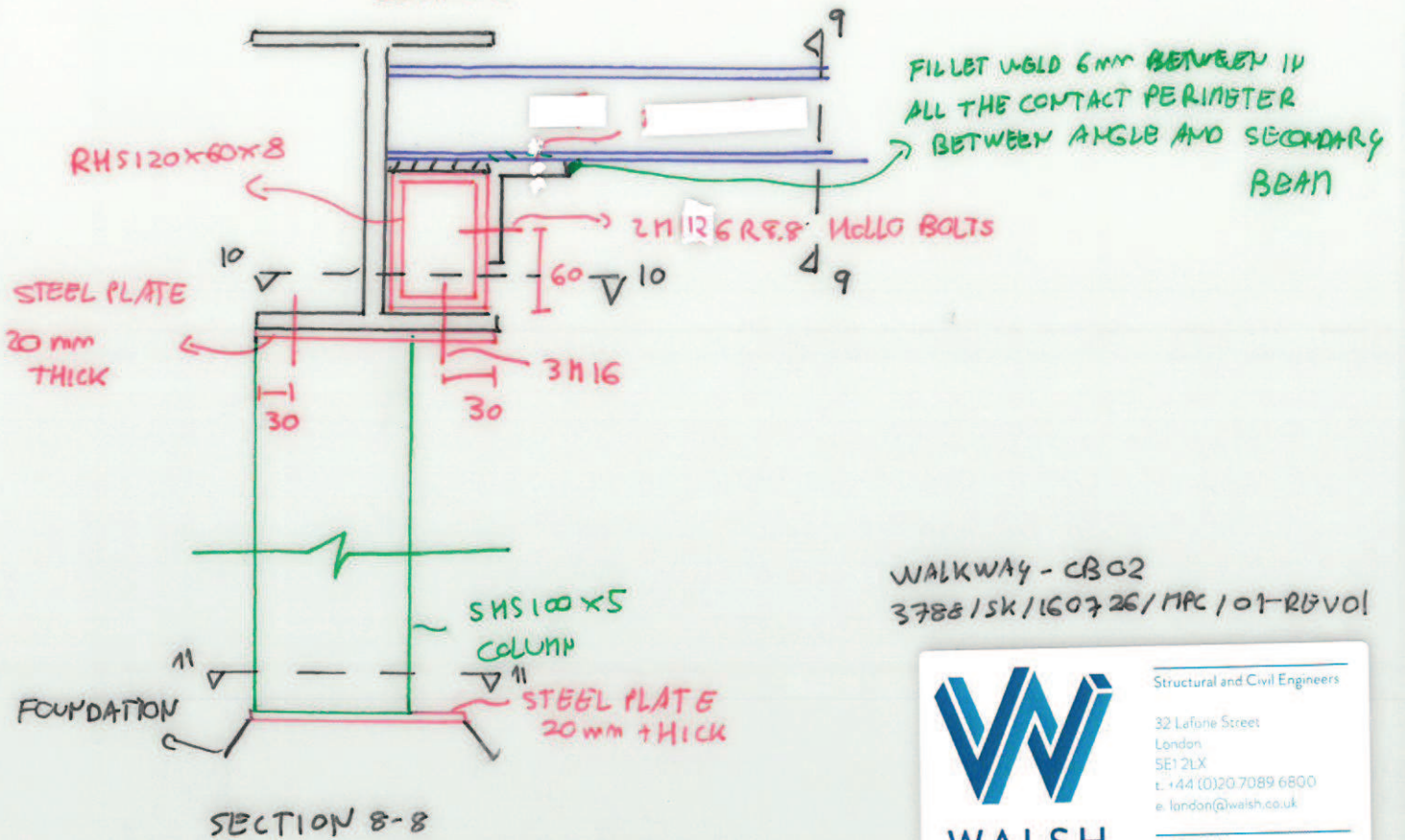
WALSH
 Structural and Civil Engineers
 32 Lafone Street
 London
 SE1 2LX
 t: +44 (0)20 7089 6800
 e: london@walsh.co.uk
 walsh.co.uk

CORNER BEAM - SOLUTION 2

ALL STEEL 355
ALL STEEL GALVANISED
OR PAINTED EQUIVALENT



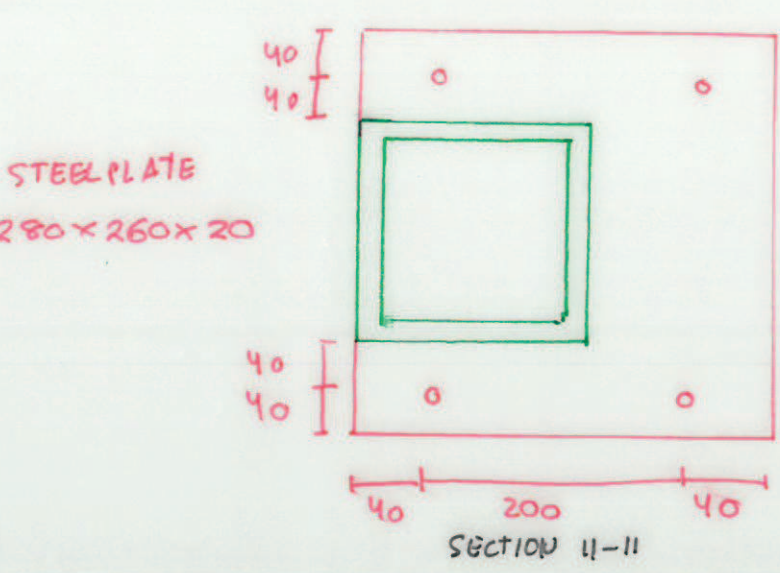
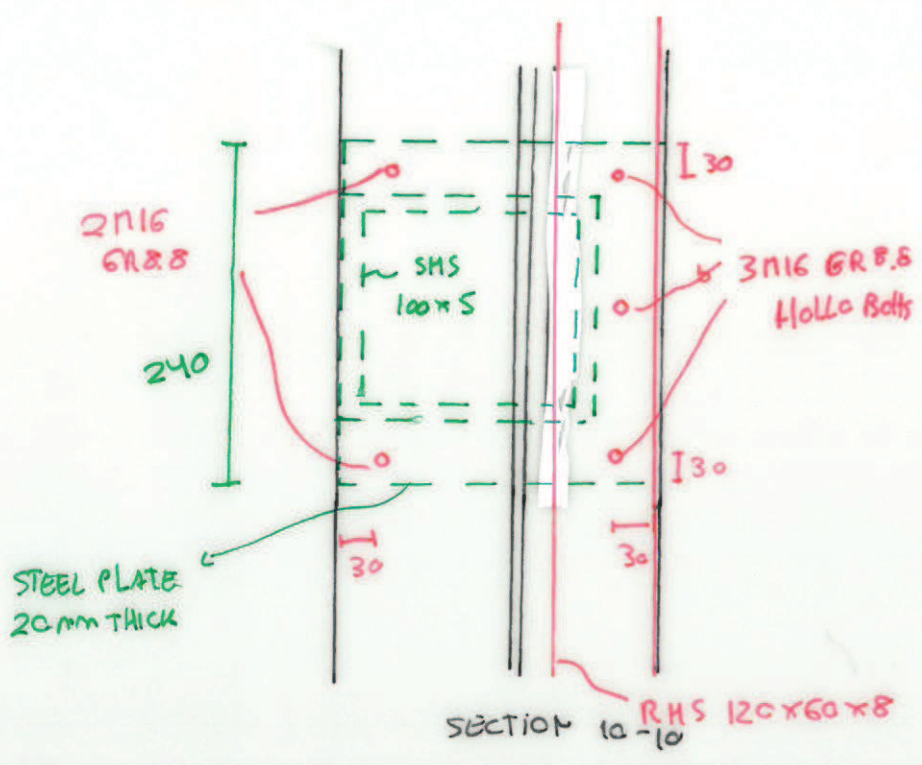
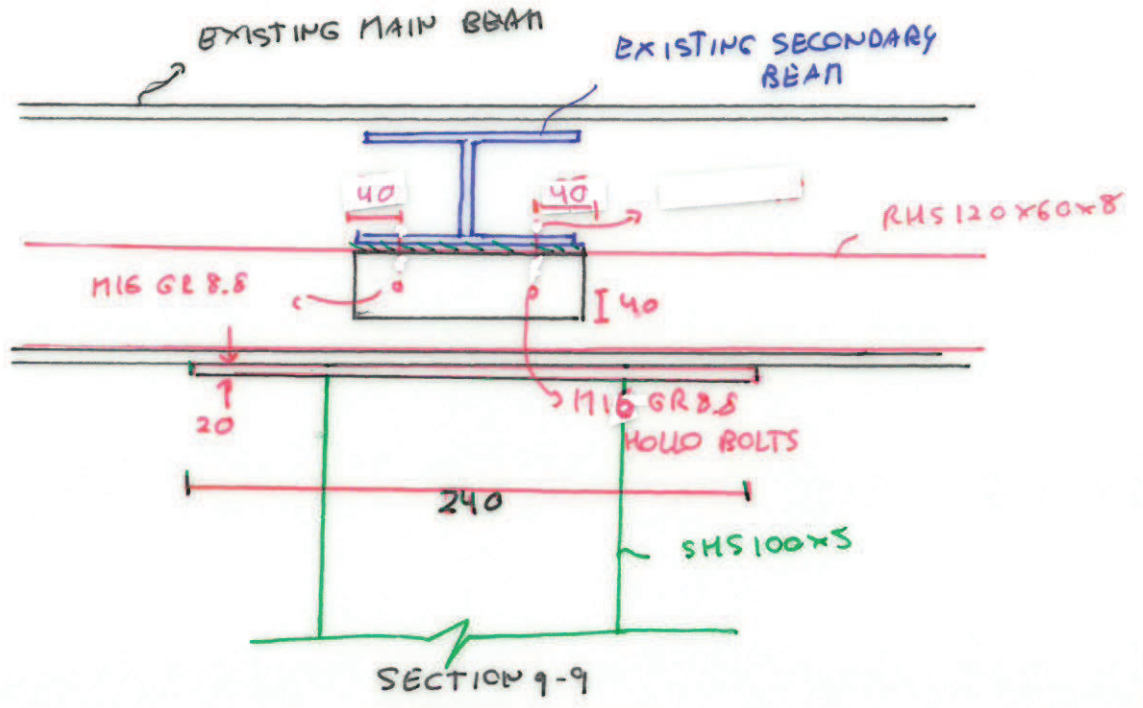
DETAIL G



WALKWAY - CB02
3788 / SK / 160726 / MPC / 01-RB VOL



Structural and Civil Engineers
32 Laforie Street
London
SE1 2LX
t: +44 (0)20 7089 6800
e: london@walsh.co.uk
walsh.co.uk

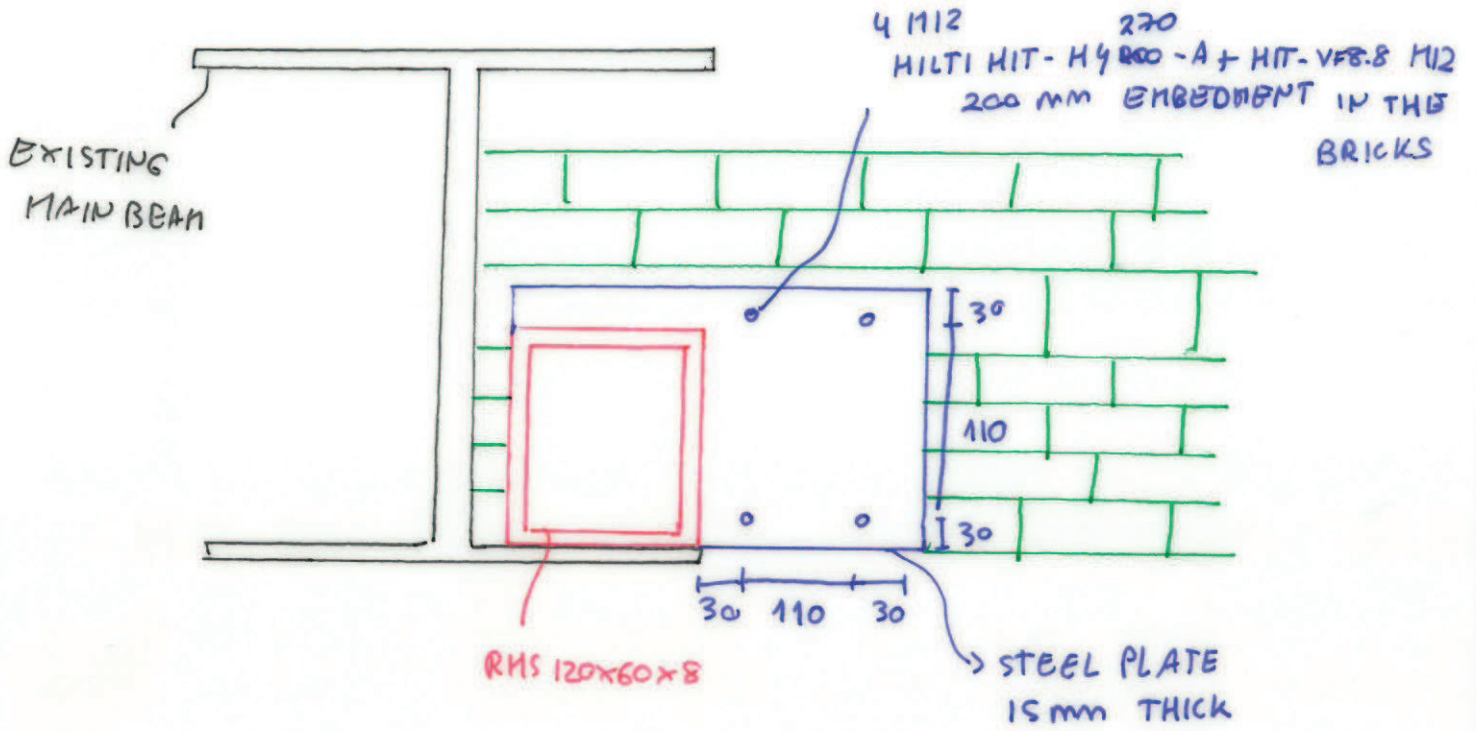


HILTI HIT-Hy 200-A
 + HIT-v 8.8 M16
 200 mm
 EMBEDMENT

WALKWAY - CB02
 3788 / SK / 160725 / MPC / 02 - REV01

WALSH

Structural and Civil Engineers
 32 Lafone Street
 London
 SE1 2LX
 t: +44 (0)20 7089 6800
 e: london@walsh.co.uk
 walsh.co.uk



WALKWAY - CB02
3758 / SK / 160726 / MPC / 03 - REV 01



WALSH

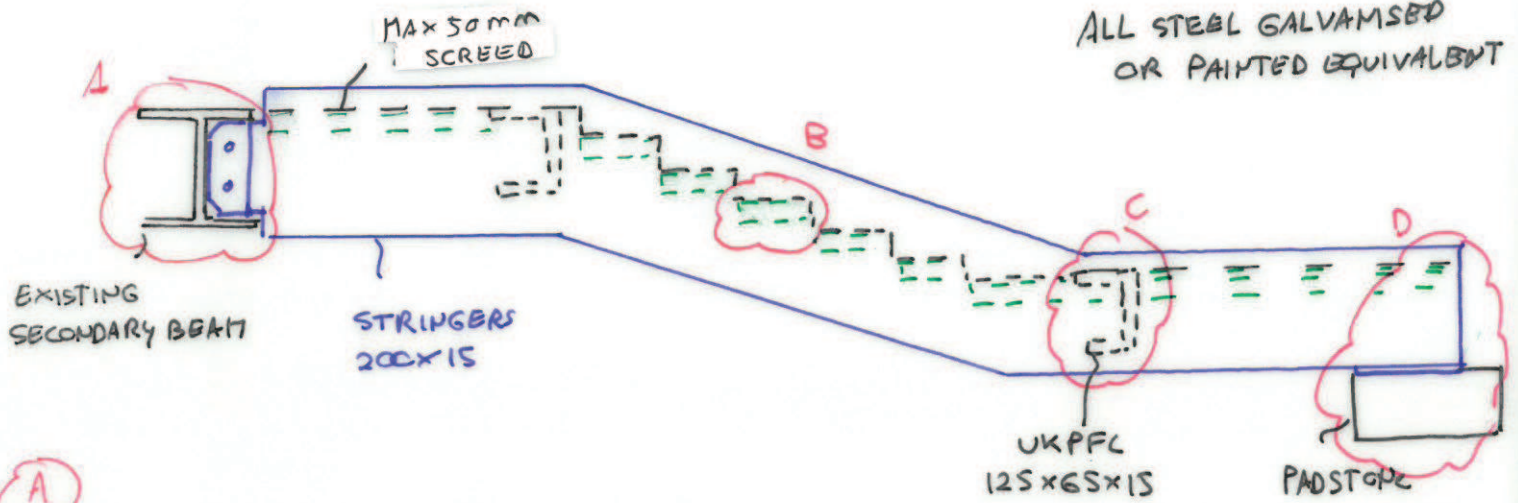
Structural and Civil Engineers

32 Lafone Street
London
SE1 2LX
t +44 (0)20 7089 6800
e. london@walsh.co.uk

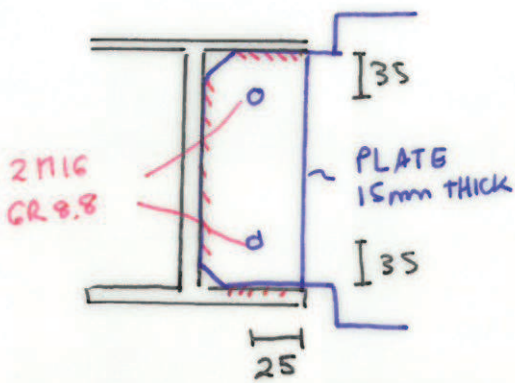
walsh.co.uk

NEW BRIDGE

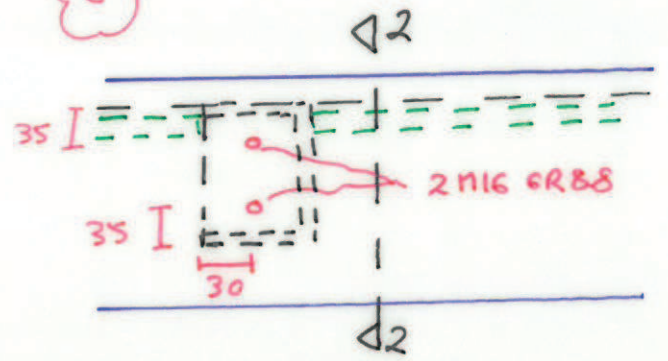
ALL STEEL 3SS
ALL STEEL GALVANISED
OR PAINTED EQUIVALENT



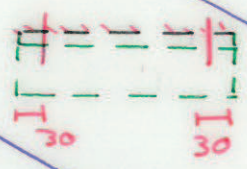
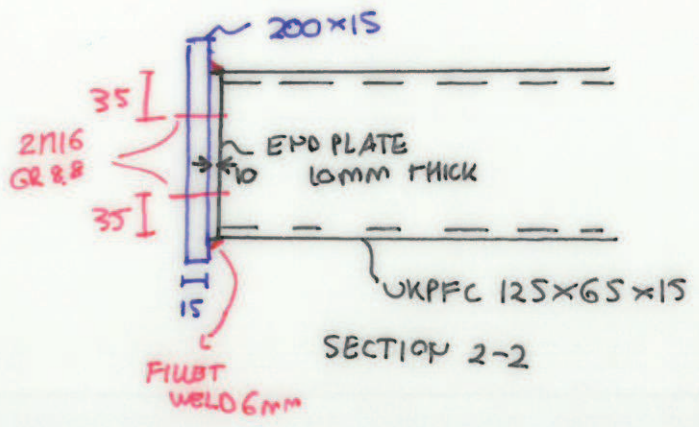
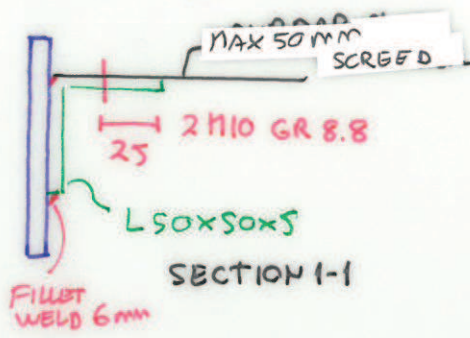
A



C



B



ELEVATION ON STEP

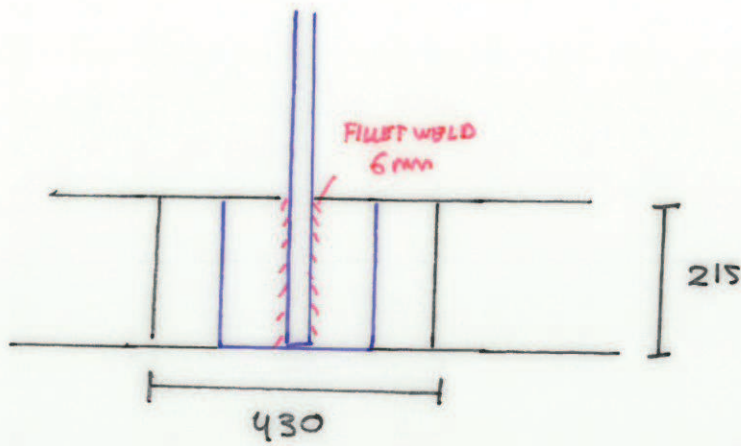
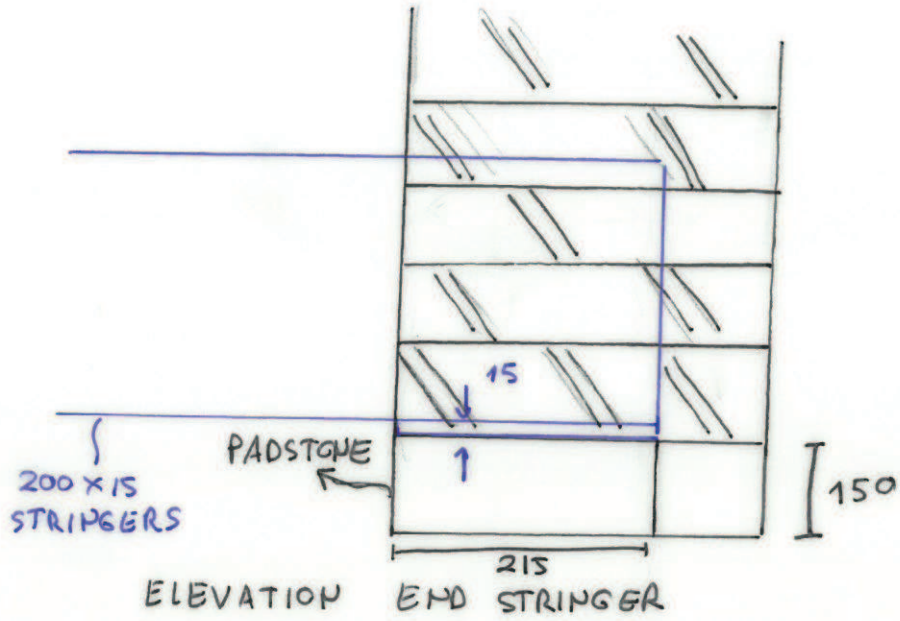
WALKWAY - NB
3788 / SK / 16072C / MPC / 01 - REV 01



Structural and Civil Engineers

32 Lafone Street
London
SE1 2LX
t: +44 (0)20 7089 6800
e: london@walsh.co.uk

walsh.co.uk



PLAN ON PADSTONE

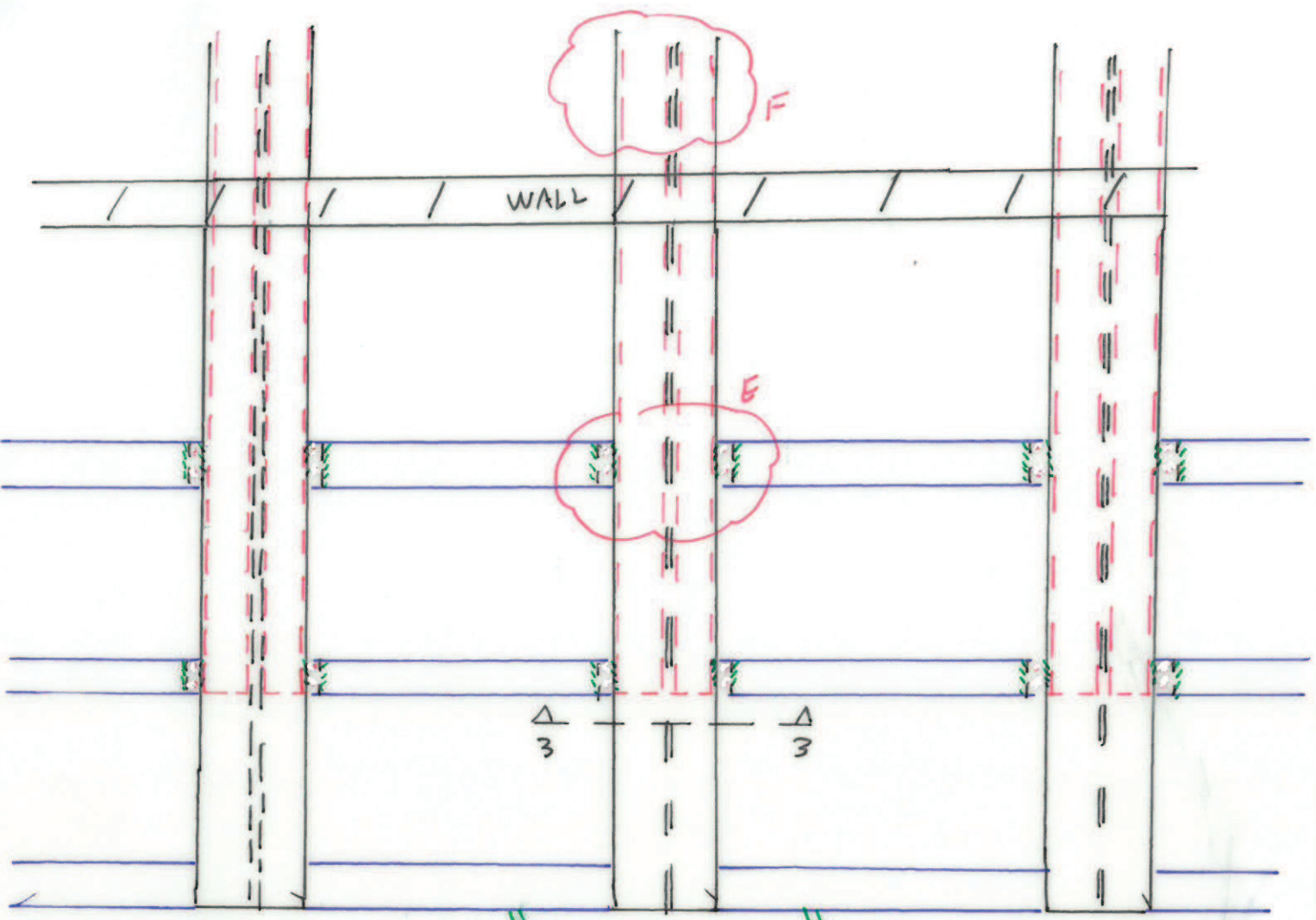
WALKWAY - MB
3788 / SK / 160726 / MPC / 02



Structural and Civil Engineers

32 Lafone Street
London
SE1 2LX
t: +44 (0)20 7089 6800
e: london@walsh.co.uk

walsh.co.uk

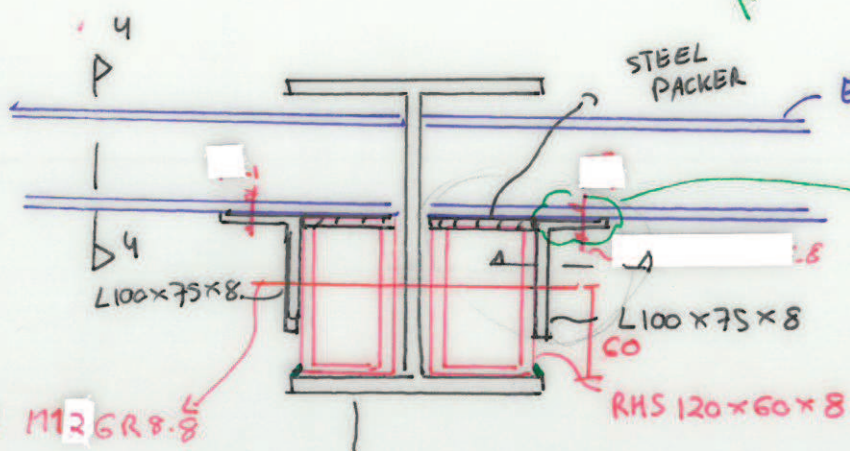
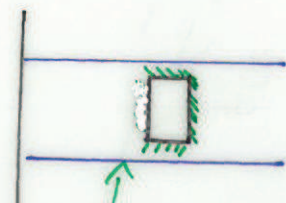


NOTE

ONLY THESE 3 MAIN BEAMS TO BE

STRENGTHENED

NEW BRIDGE



EXISTING SECONDARY BEAM

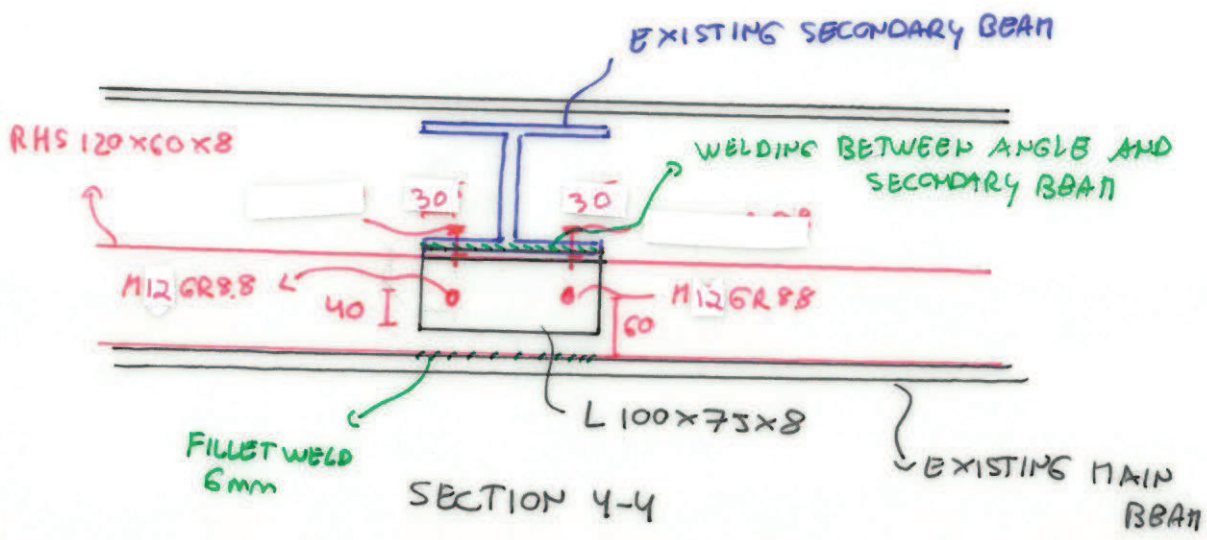
6mm
FILLET WELD ALONG ALL THE CONTACT PERIMETER BETWEEN THE ANGLE AND THE EXISTING SECONDARY BEAM

EXISTING MAIN BEAM

SECTION 3-3

WALKWAY - MB
3788 / SK / 160726 / MPL / G3 - RBV01

Structural and Civil Engineers
32 Lafone Street
London
SE1 2LX
t. +44 (0)20 7089 6800
e. london@walsh.co.uk
walsh.co.uk



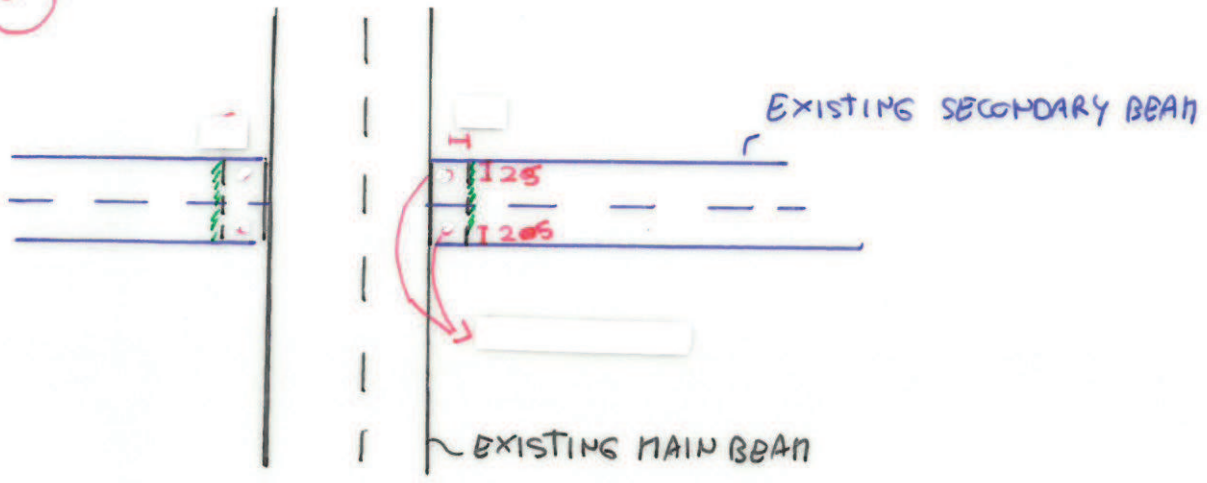
WALKWAY - NB
 3788/SK/1607 26/MPC/04 - REV 01

WALSH

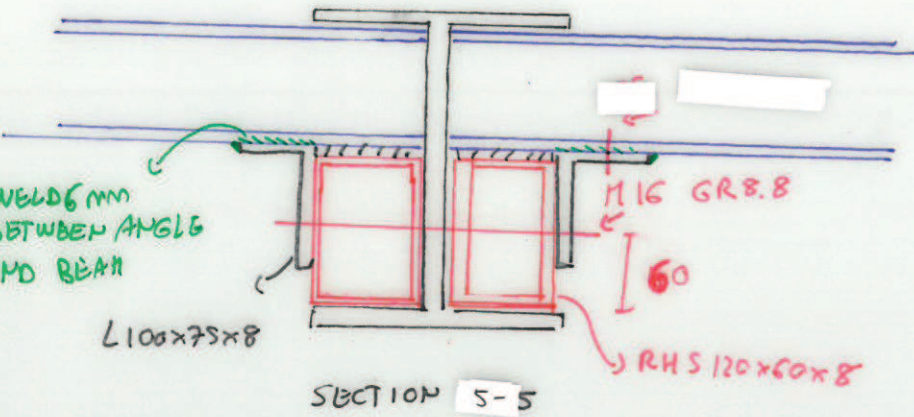
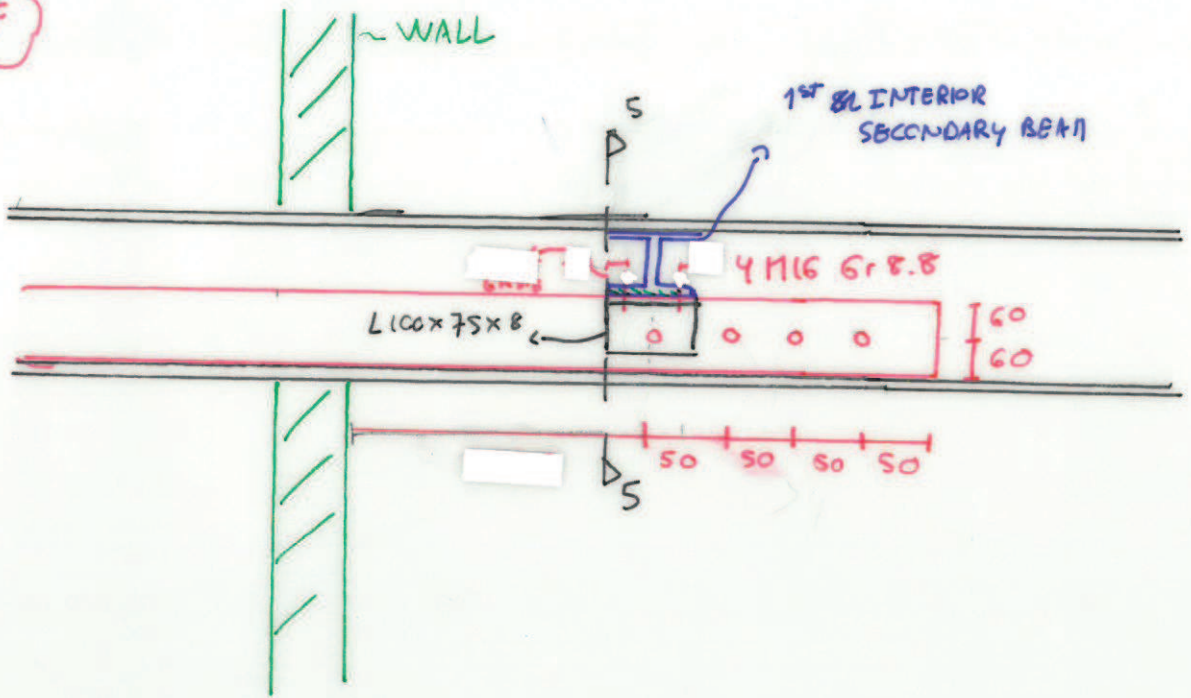
Structural and Civil Engineers

32 Lafone Street
 London
 SE1 2LX
 t. +44 (0)20 7089 6800
 e. london@walsh.co.uk
 walsh.co.uk

E



F



WALKWAY - NB
 3788/SK/160726/11PC/05-REV01

WALSH

Structural and Civil Engineers

32 Lafone Street
 London
 SE1 2LX
 t. +44 (0)20 7089 6800
 e. london@walsh.co.uk

walsh.co.uk

WALKWAY RETURN AT NORTH-EAST CORNER

ALL STEEL 355

ALL STEEL GALVANISED OR
PAINTED EQUIVALENT

EXISTING SECONDARY BEAMS

EXISTING
MAIN BEAM

EXISTING
BUILDING

CONNECTION BETWEEN
CHANNEL AND EXISTING MAIN
BEAM TO BE PROPOSED BY
CONTRACTOR

EXISTING
SECONDARY BEAM

CONCRETE LAYER

UKPFC 100x50x10

BRICKS

DETAIL A

EXISTING
MAIN BEAM

NEW SECONDARY BEAM
UKB 152x89x16

WALKWAY - RETURN
3788 1SK/160727/11P/101

SECTION 1-1

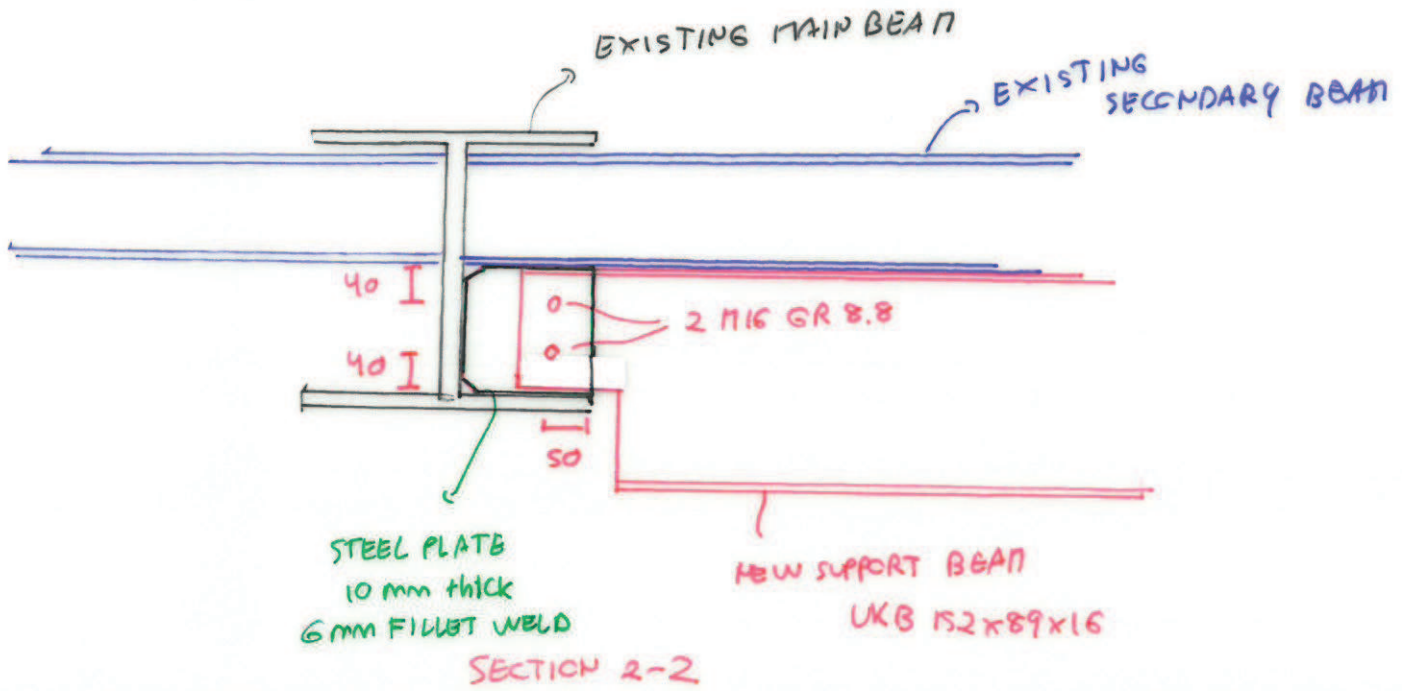


WALSH

Structural and Civil Engineers

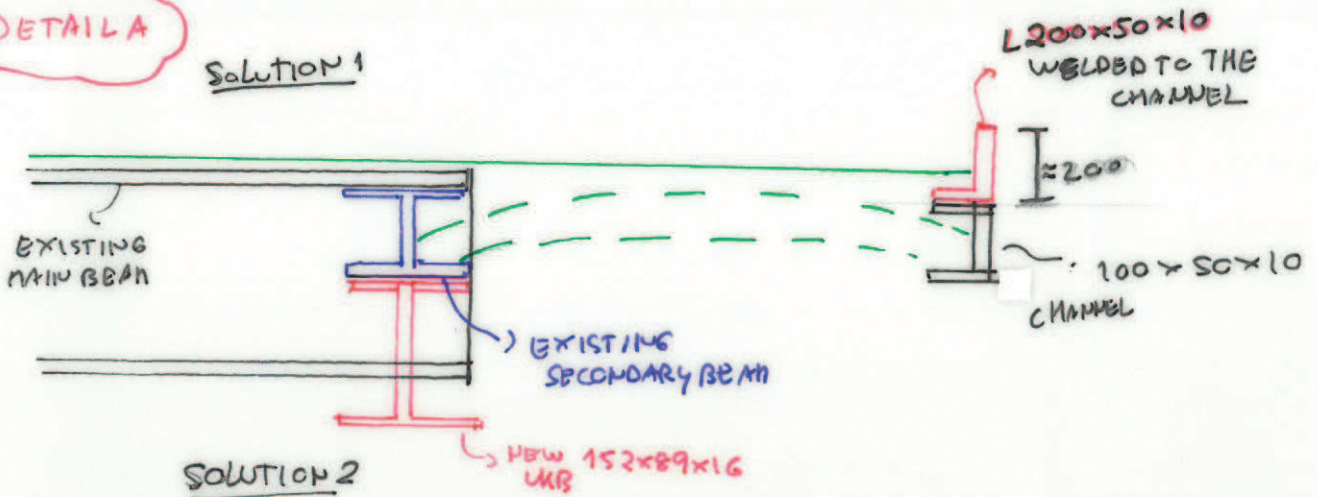
32 Lafone Street
London
SE1 2LX
t: +44 (0)20 7089 6600
e: london@walsh.co.uk

walsh.co.uk

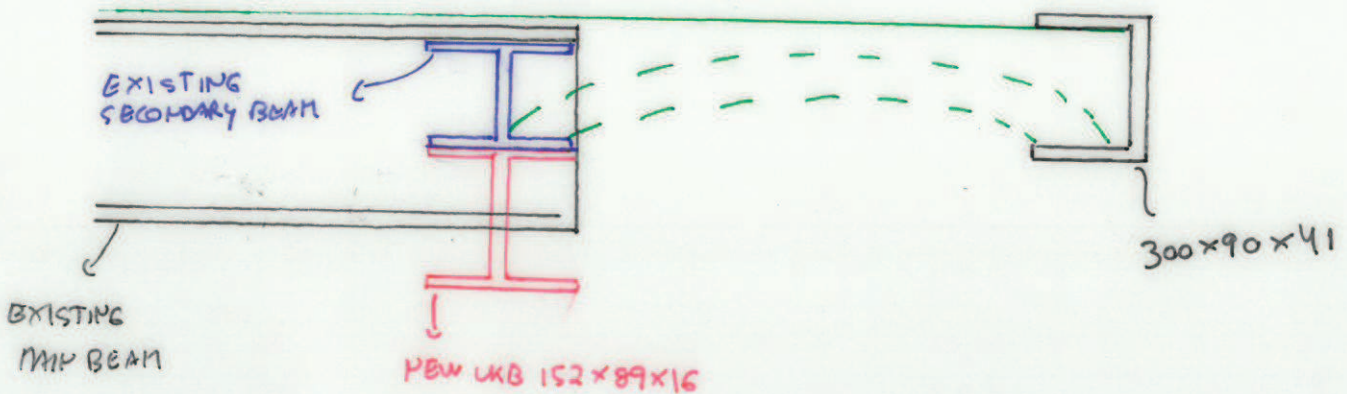


DETAIL A

SOLUTION 1



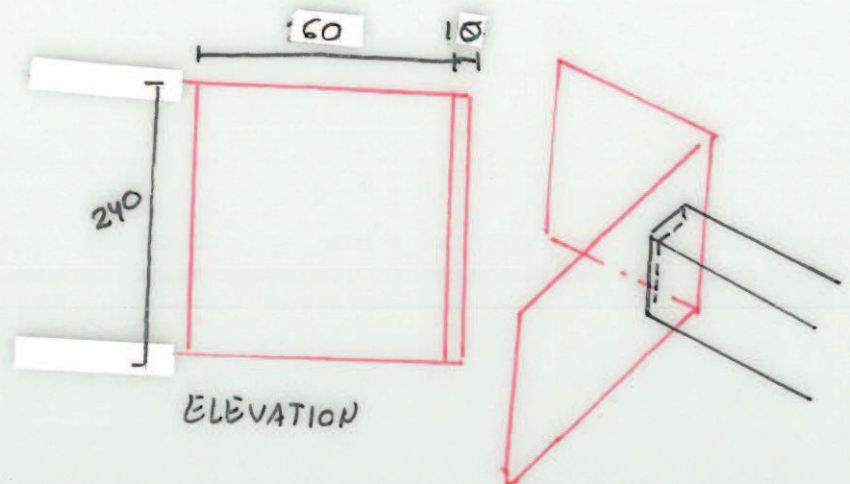
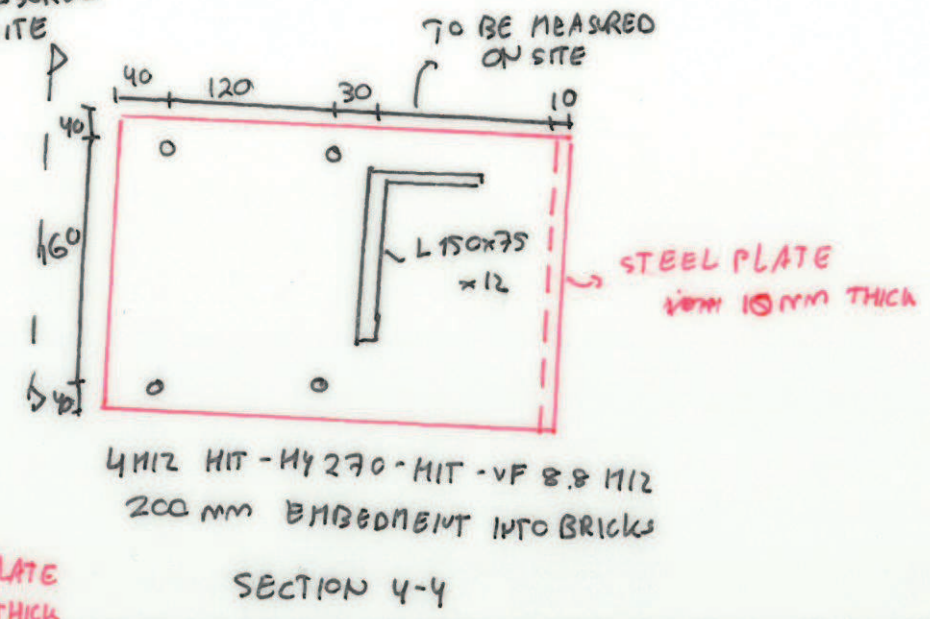
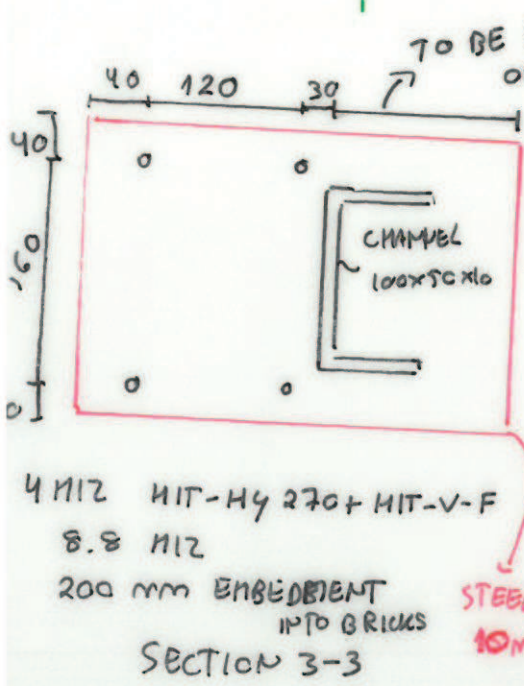
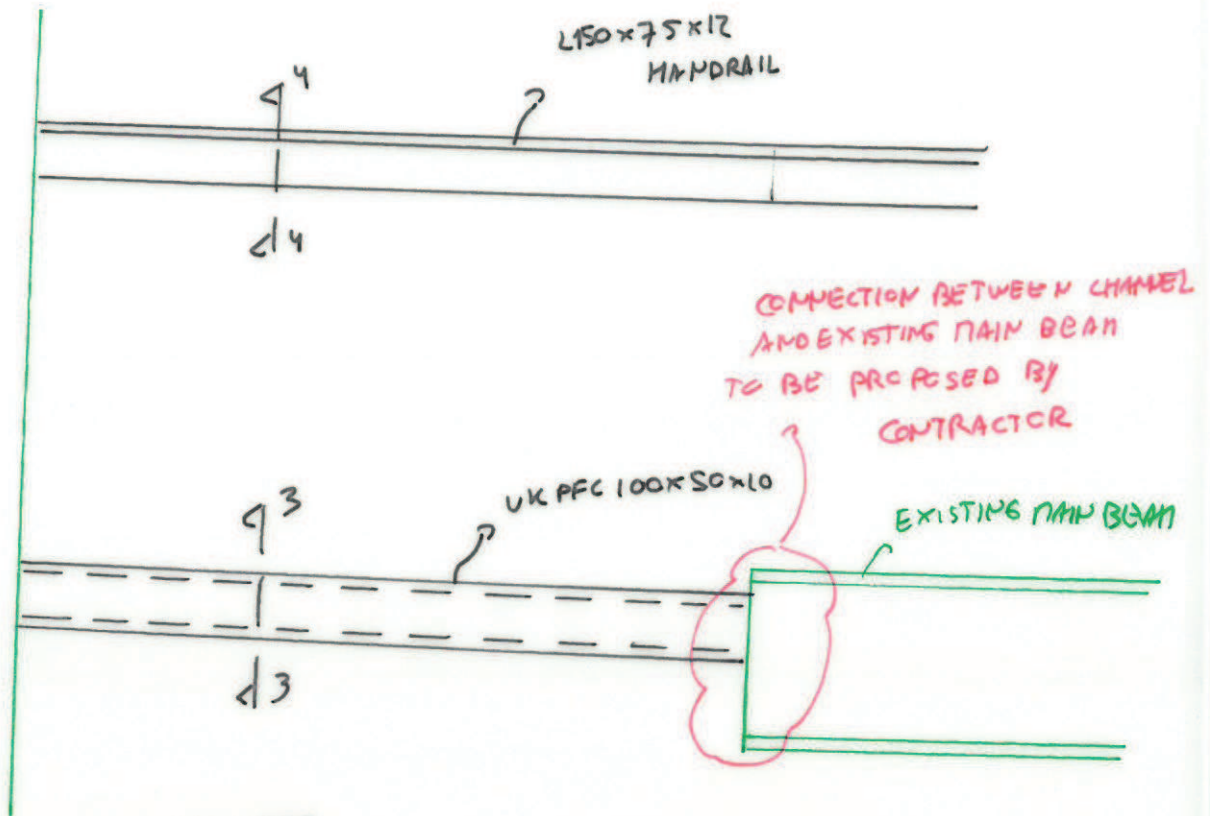
SOLUTION 2



WALKWAY - RETURN
3788/SK/160727/MPC/OR



Structural and Civil Engineers
32 Lafone Street
London
SE1 2LX
t: +44 (0)20 7089 6800
e: london@walsh.co.uk
walsh.co.uk



WALKWAY - RETURN
37881 SW/160727/NPC/03



Structural and Civil Engineers
32 Lafone Street
London
SE1 2LX
t. +44 (0)20 7089 6800
e. london@walsh.co.uk
walsh.co.uk