

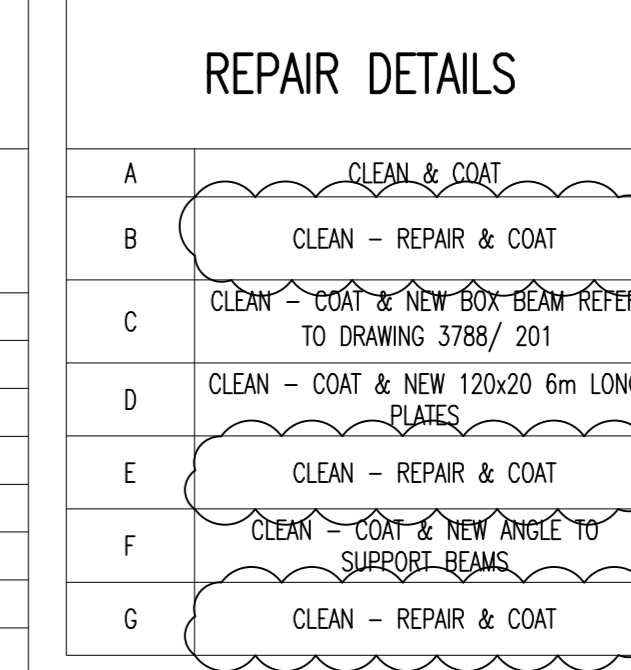
PLAN VIEW ON WALKWAY  
SHOWING ELEMENT REFERENCES  
(SCALE 1:100)

ELEMENT REFERENCE	REPAIR DETAIL REF.
P1	C
P2	A
P3	A
P4	A
P5	A
P6	A
P7	A
P8	A
P9	A
P10	A
P11	A
P12	A
P13	A
P14	A
P15	D
P16	A
P17	A
P18	A
P19	A
P20	A
P21	A
P22	A

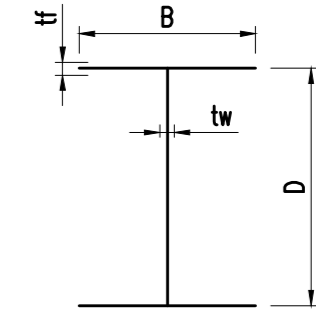
SECONDARY BEAMS - SB1	
ELEMENT REFERENCE	REPAIR DETAIL REF.
SB1-1	B
SB1-2	B
SB1-3	B
SB1-4	B
SB1-5	B
SB1-6	E
SB1-7	B
SB1-8	B
SB1-9	B
SB1-10	B
SB1-11	B
SB1-12	B
SB1-13	B
SB1-14	B
SB1-15	B
SB1-16	B
SB1-17	B
SB1-18	B
SB1-19	B
SB1-20	B
SB1-21	B

SECONDARY BEAMS - SB2	
ELEMENT REFERENCE	REPAIR DETAIL REF.
SB2-1	B
SB2-2	B
SB2-3	B
SB2-4	B
SB2-5	B
SB2-6	E
SB2-7	B
SB2-8	B
SB2-9	B
SB2-10	B
SB2-11	B
SB2-12	B
SB2-13	B
SB2-14	B
SB2-15	B
SB2-16	G
SB2-17	B
SB2-18	B
SB2-19	B
SB2-20	B
SB2-21	B

SECONDARY BEAMS - SB3	
ELEMENT REFERENCE	REPAIR DETAIL REF.
SB3-1	A
SB3-2	A
SB3-3	A
SB3-4	A
SB3-5	A
SB3-6	E
SB3-7	A
SB3-8	A
SB3-9	A
SB3-10	A
SB3-11	A
SB3-12	A
SB3-13	A
SB3-14	B
SB3-15	B
SB3-16	F
SB3-17	F
SB3-18	A
SB3-19	A
SB3-20	A
SB3-21	A



*MINIMUM DIMENSIONS OF THE BEAMS				
	D(mm)	B(mm)	tw(mm)	tf(mm)
PRIMARY BEAMS	435	152	6.4	17.9
SECONDARY BEAMS - SB1	152	71	7.3	9.1
SECONDARY BEAMS SB2	152	71	7.3	9.1
SECONDARY BEAMS SB3	184	75	4	5.9



Notes

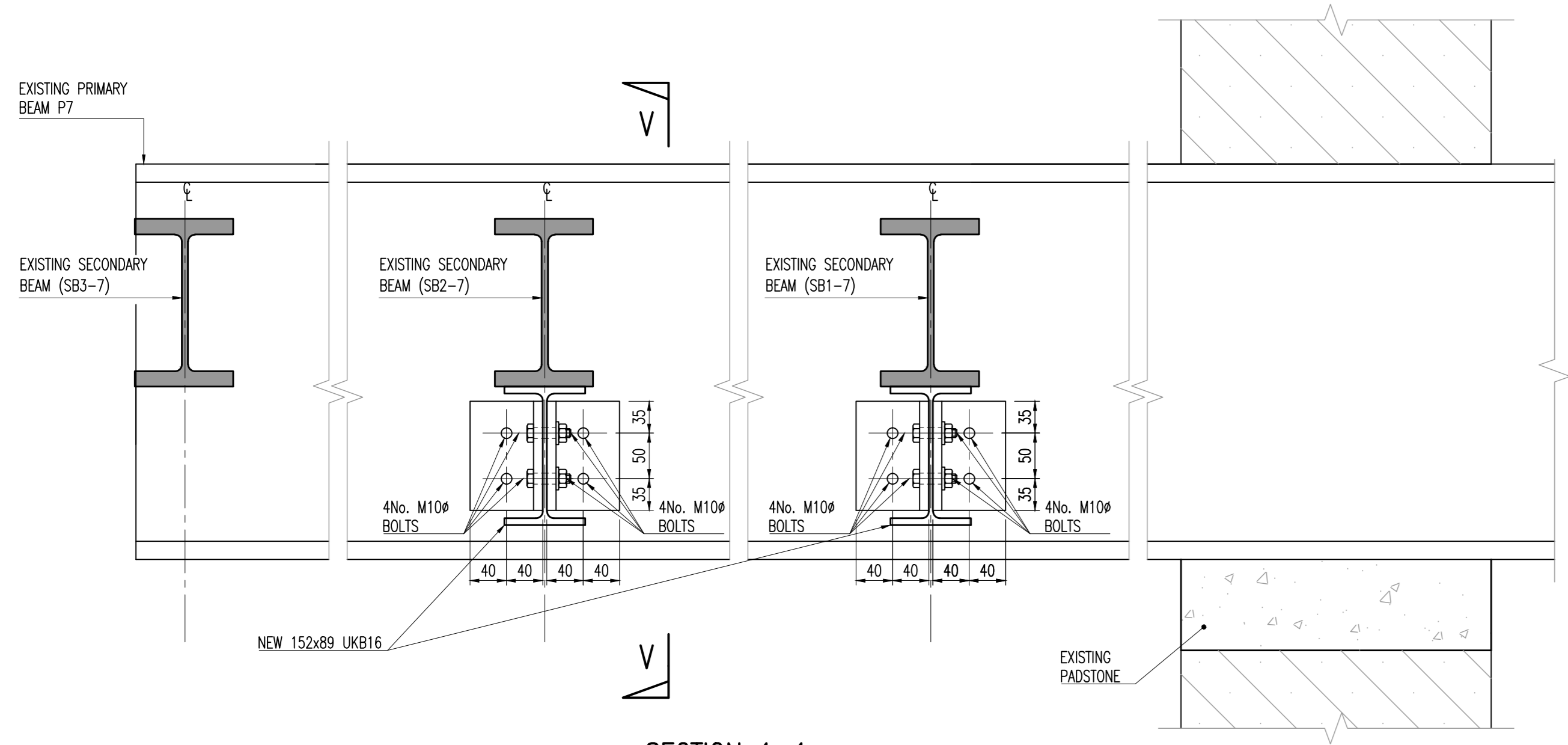
- ALL DIMENSIONS ARE IN MILLIMETRES AND LEVELS IN METRES.
- THIS DRAWING TO BE READ IN CONJUNCTION WITH RELEVANT ARCHITECT'S AND ENGINEER'S DRAWINGS AND SPECIFICATIONS.
- THIS DRAWING HAS BEEN PRODUCED ELECTRONICALLY AND MAY HAVE BEEN PHOTO REDUCED OR ENLARGED WHEN COPIED. HENCE, DO NOT RELY ON ANY SCALES QUOTED. WORK ONLY TO FIGURED DIMENSIONS (DO NOT SCALE). ALL DIMENSIONS TO BE CHECKED ON SITE. ANY ERRORS OR OMISSIONS TO BE REPORTED TO THE ENGINEER IMMEDIATELY.
- ALL STEEL TO BE GRADE S355.
- ALL STEEL TO BE GALVANISED OR PAINTED EQUIVALENT TO EXPOSURE CLASS C3.
- BRICK ARCHES TO BE REPAIRED AND CLEANED AND REPOINTED.
- EXISTING DIMS. TO BE CHECKED AFTER CLEANING AND PRIOR TO REMEDIATION DETAILS.
- ENSURE ALL EXISTING BEAMS ARE CLEANED PRIOR TO WELDING.
- WELDS TO BE TESTED AND CERTIFICATES PROVIDED.
- ALL BOLTS TO BE GRADE 8.8 INCL.

C.D.M.

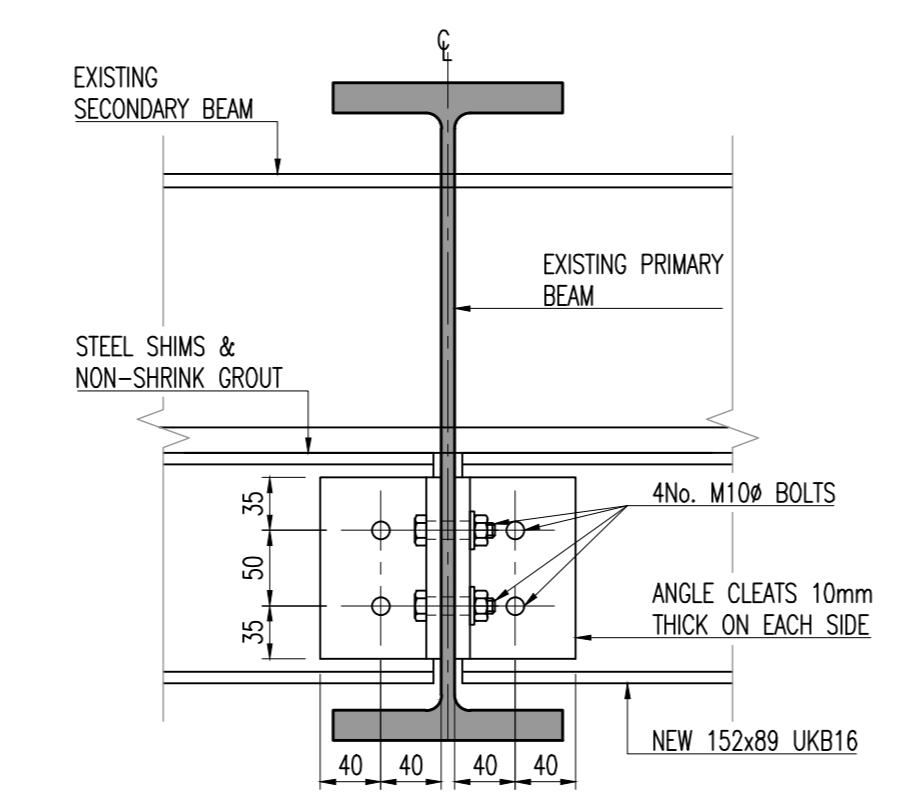
SIGNIFICANT RISKS AND HAZARDS:

- ON SITE WELDING
- WELDING OVERHEAD
- LONG STEEL PLATES
- FALLING DEBRIS FROM UNDERSIDE OF ARCHES
- WELDING ADJACENT TO GAS PIPE
- CONFIRMATION OF EXISTING MEMBER SIZES

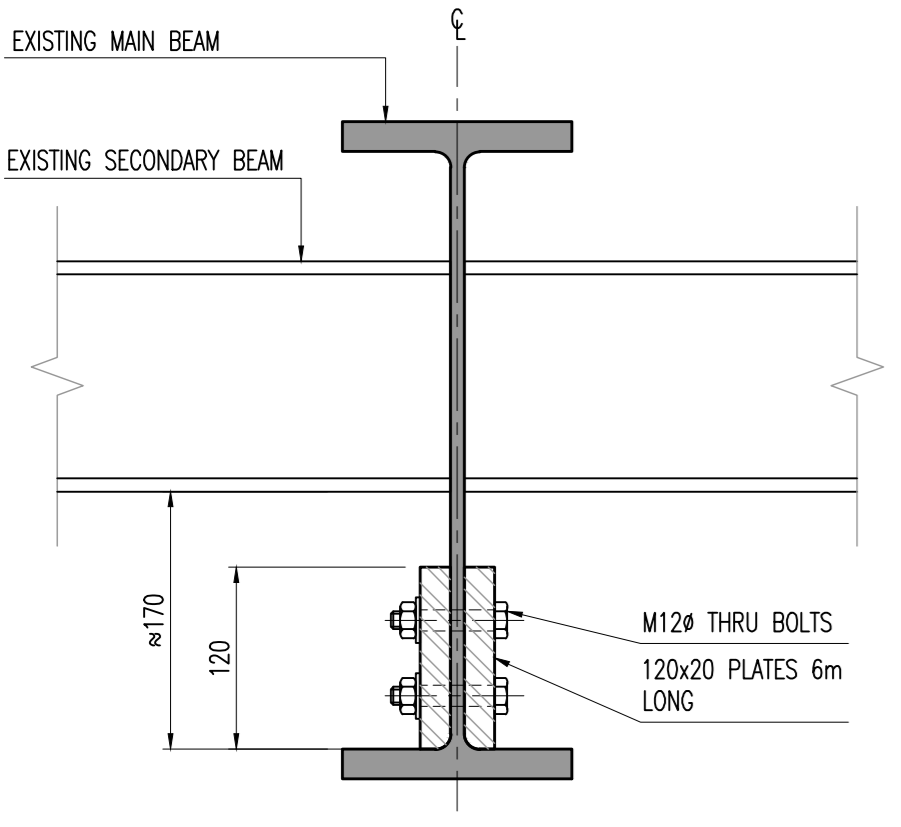
KEY DESIGN DECISIONS TO REDUCE OR ELIMINATE HAZARDS:



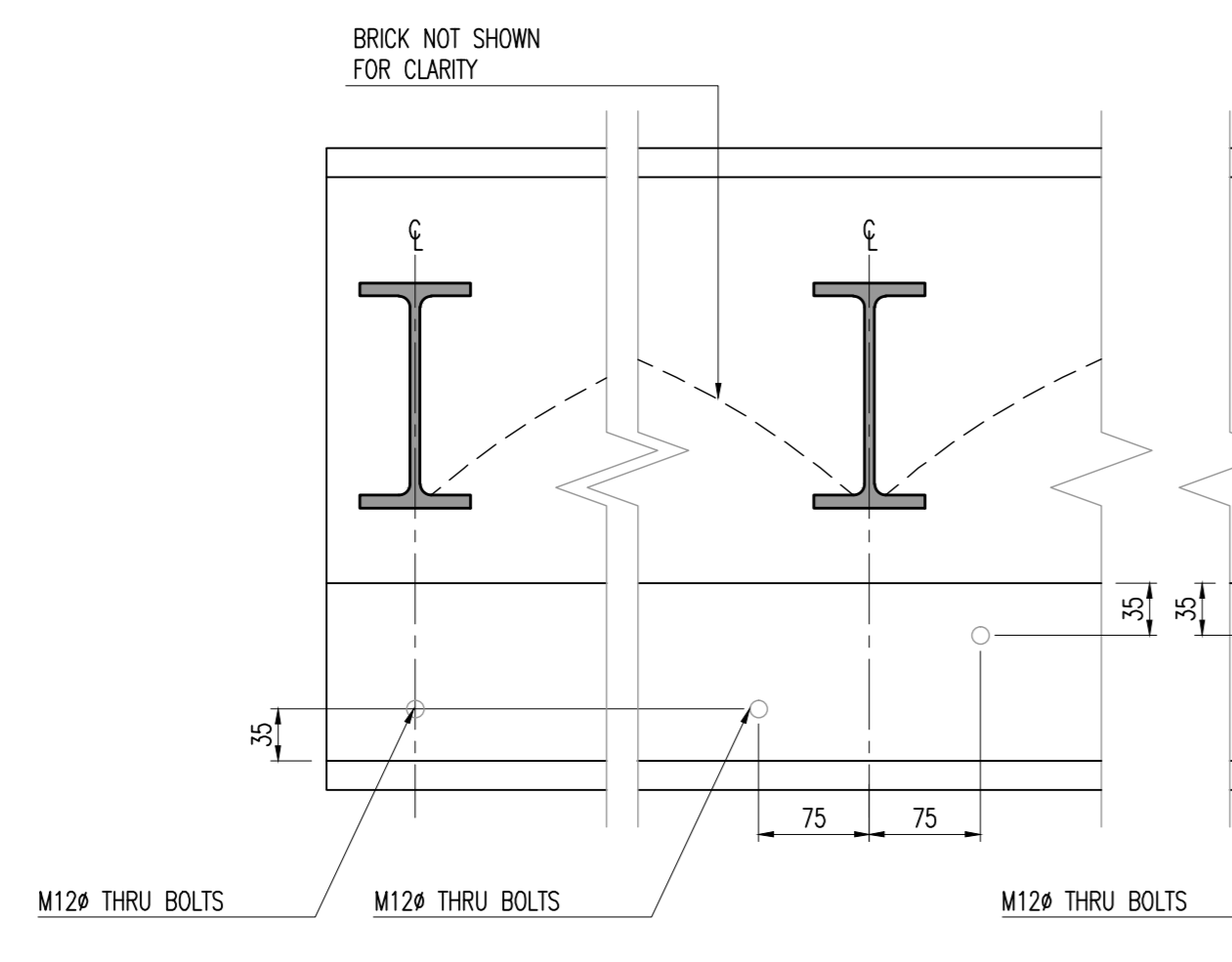
SECTION 1-1  
REPAIR DETAIL B  
(SCALE 1:5)



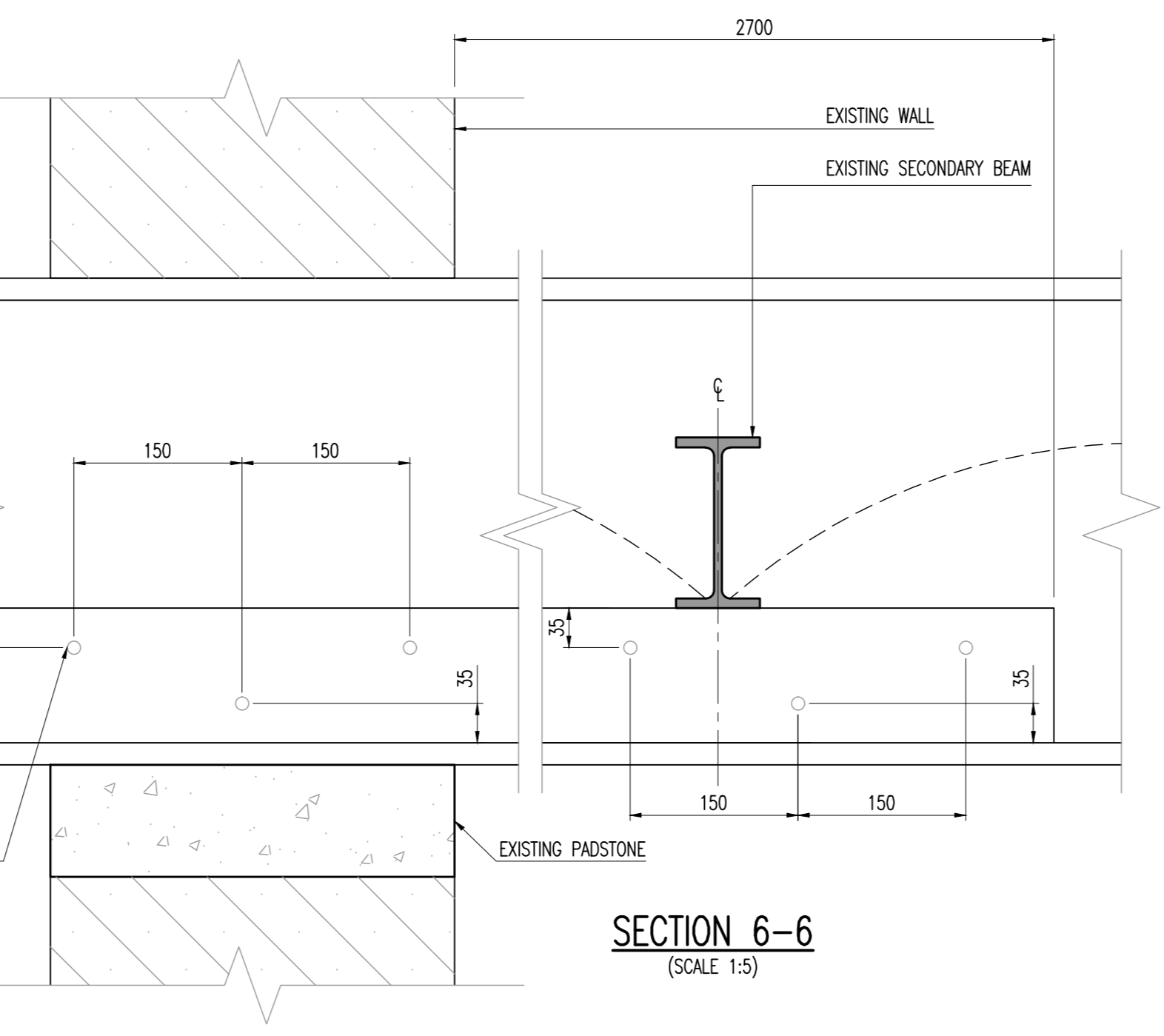
SECTION V-V  
TYPICAL CONNECTION  
(SCALE 1:5)



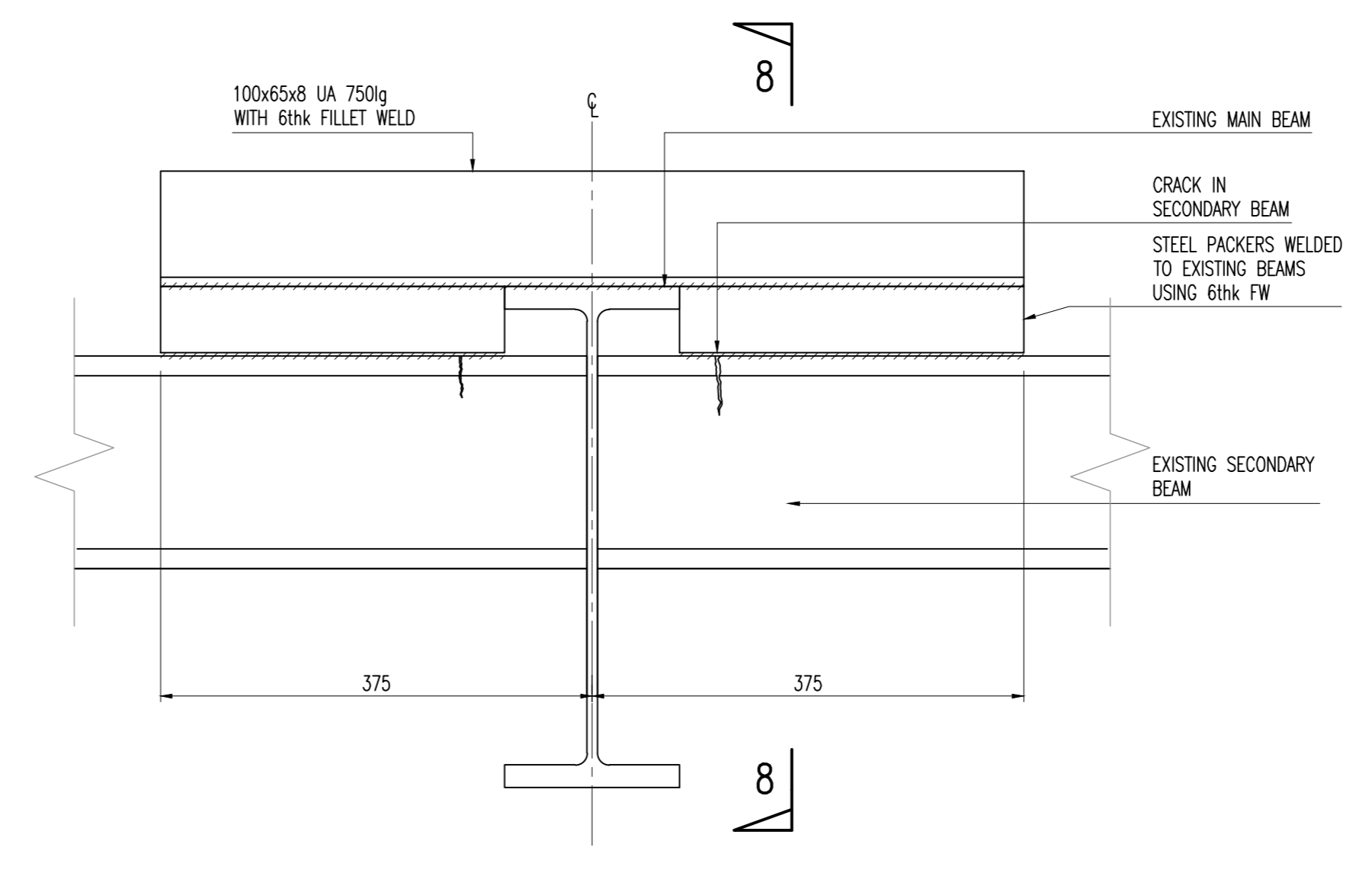
SECTION 5-5  
REPAIR DETAIL D  
(SCALE 1:5)



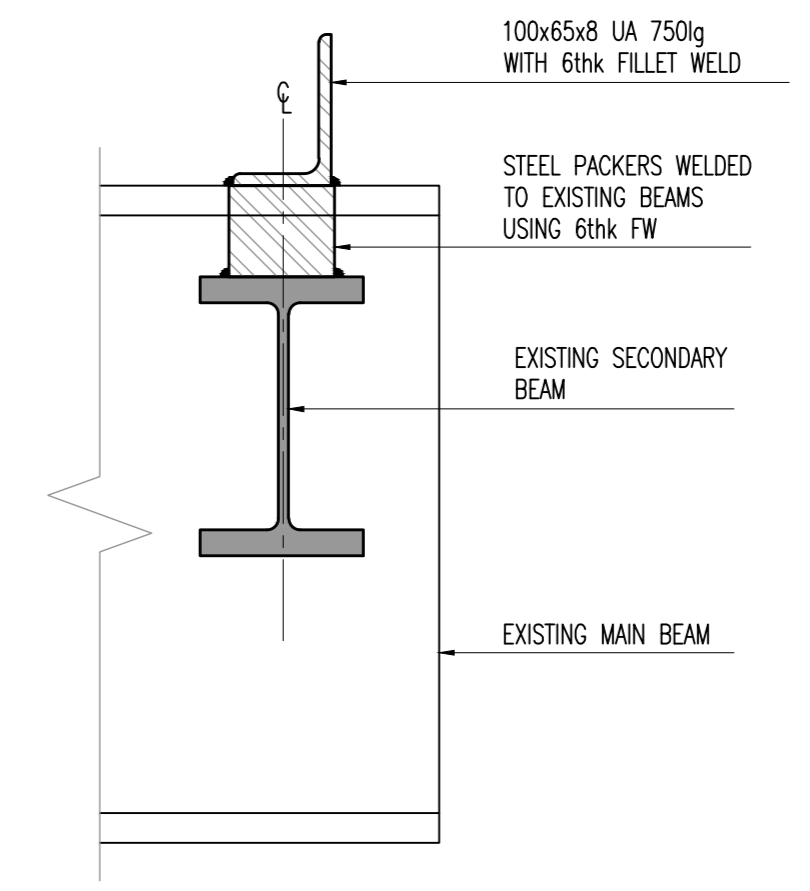
SECTION 6a-6a  
(SCALE 1:5)



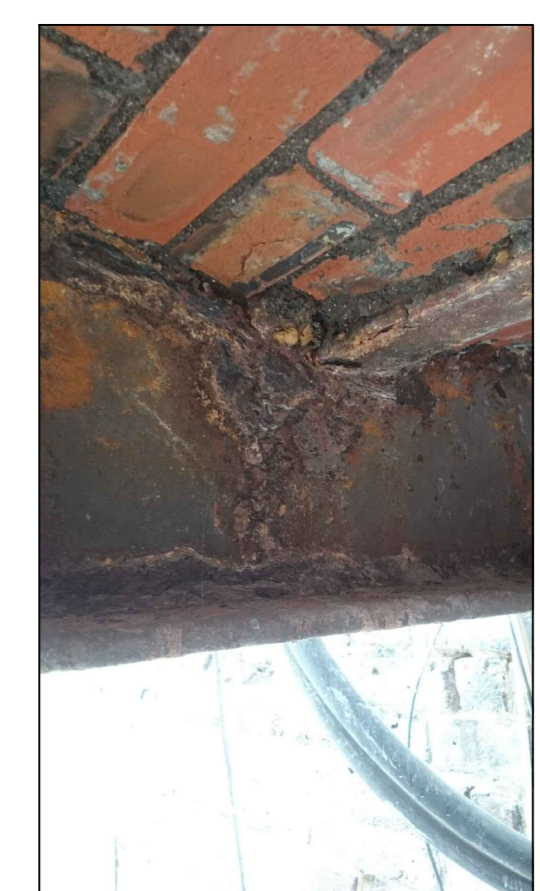
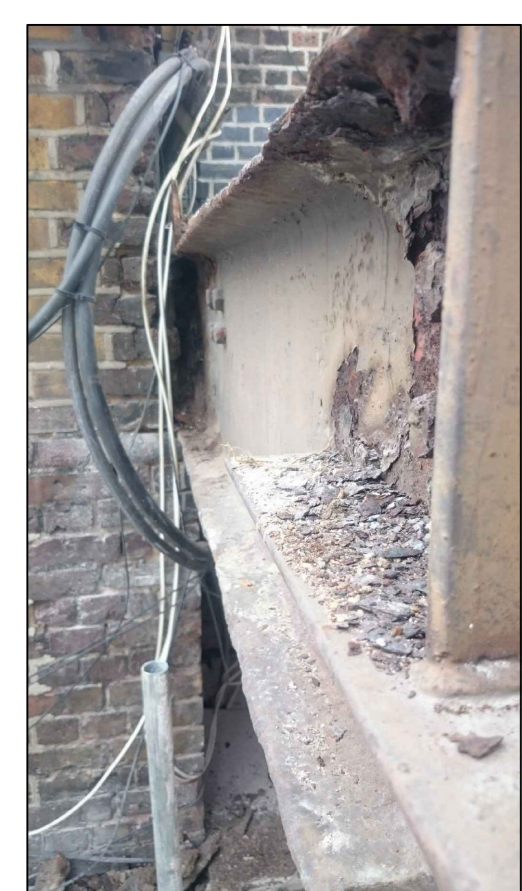
SECTION 6-6  
(SCALE 1:5)



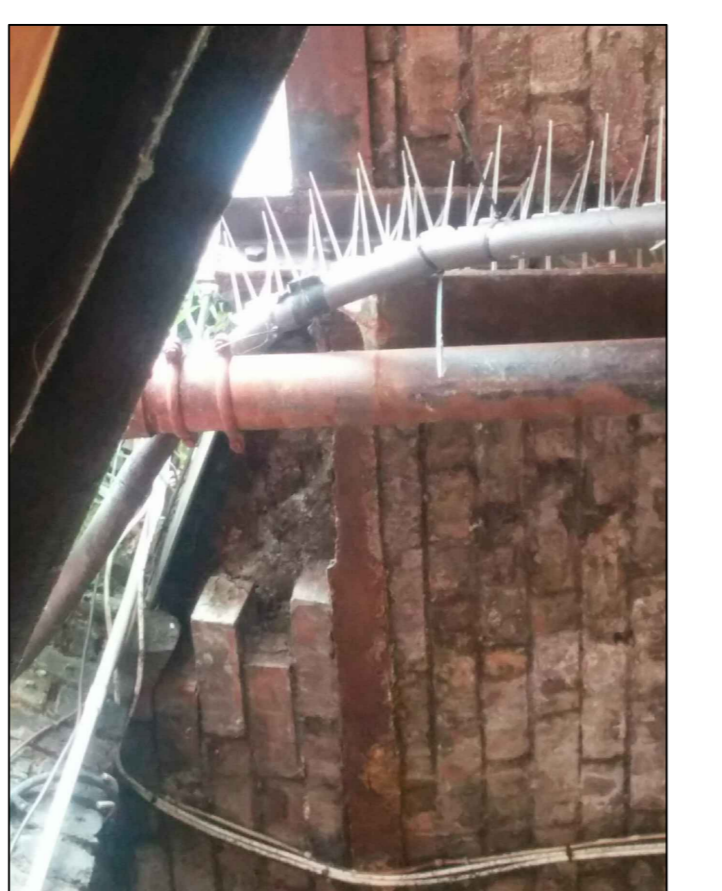
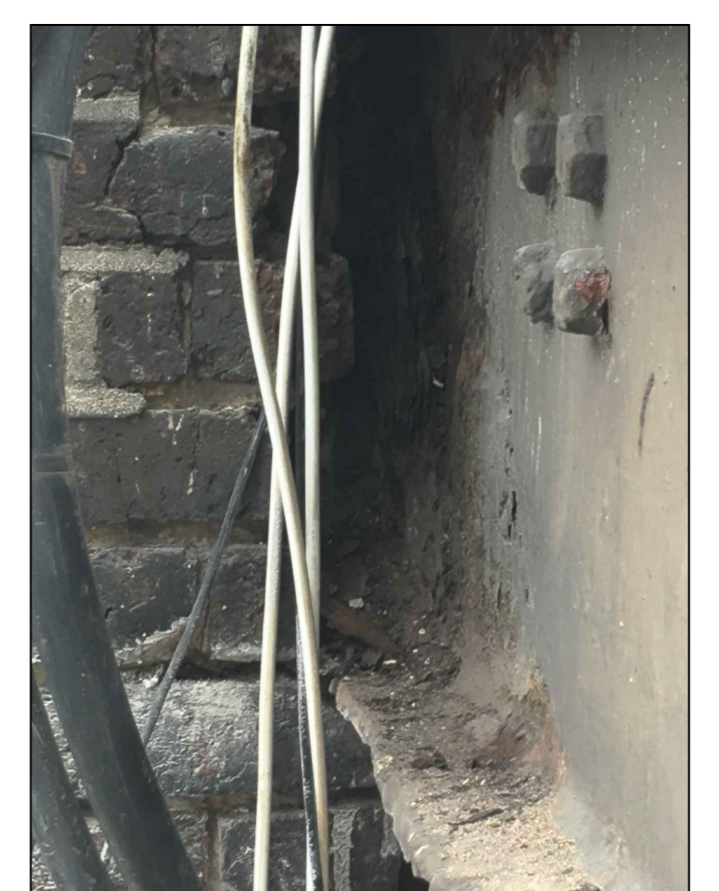
ELEVATION 7-7  
REPAIR DETAIL F  
(SCALE 1:5)



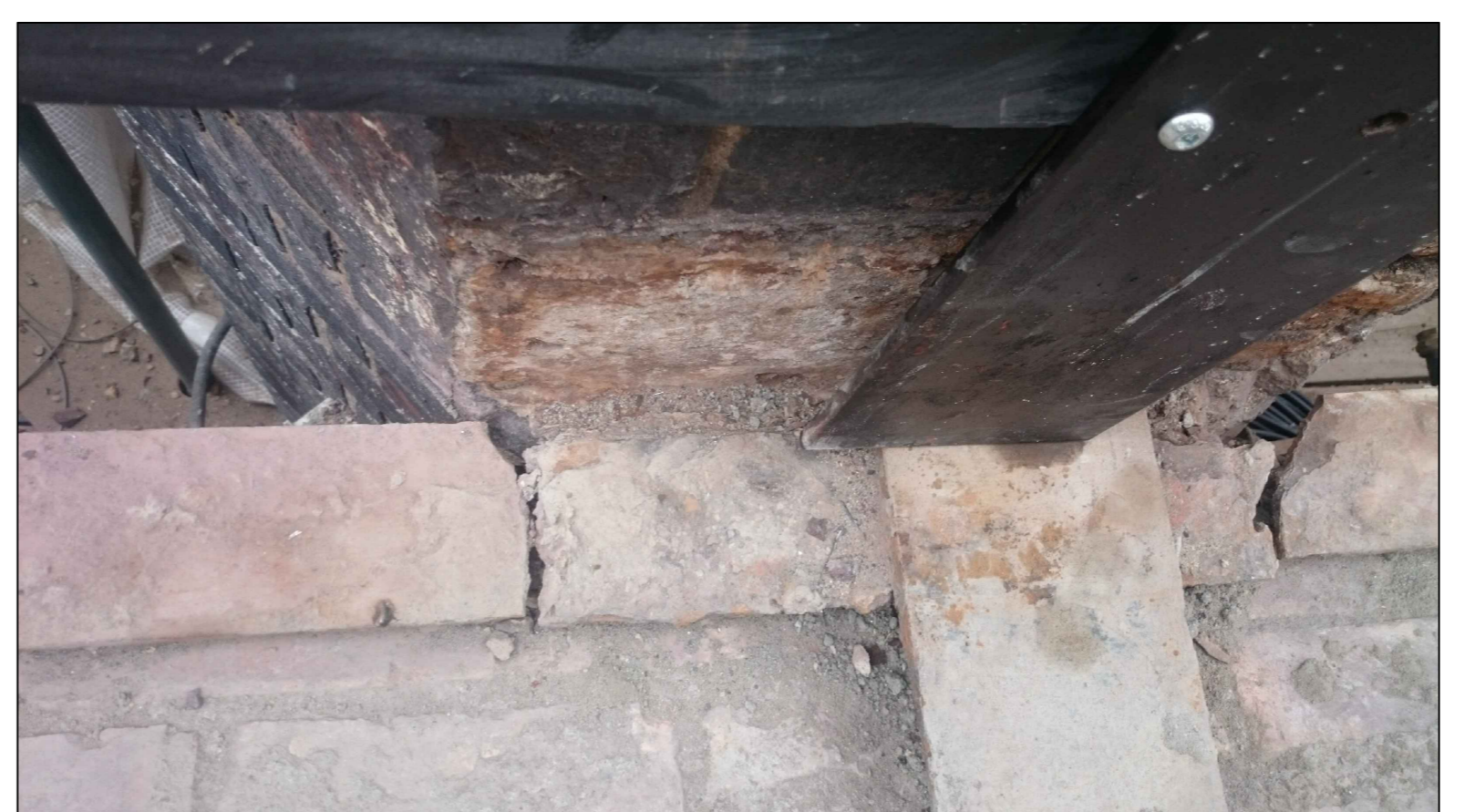
SECTION 8-8  
(SCALE 1:5)



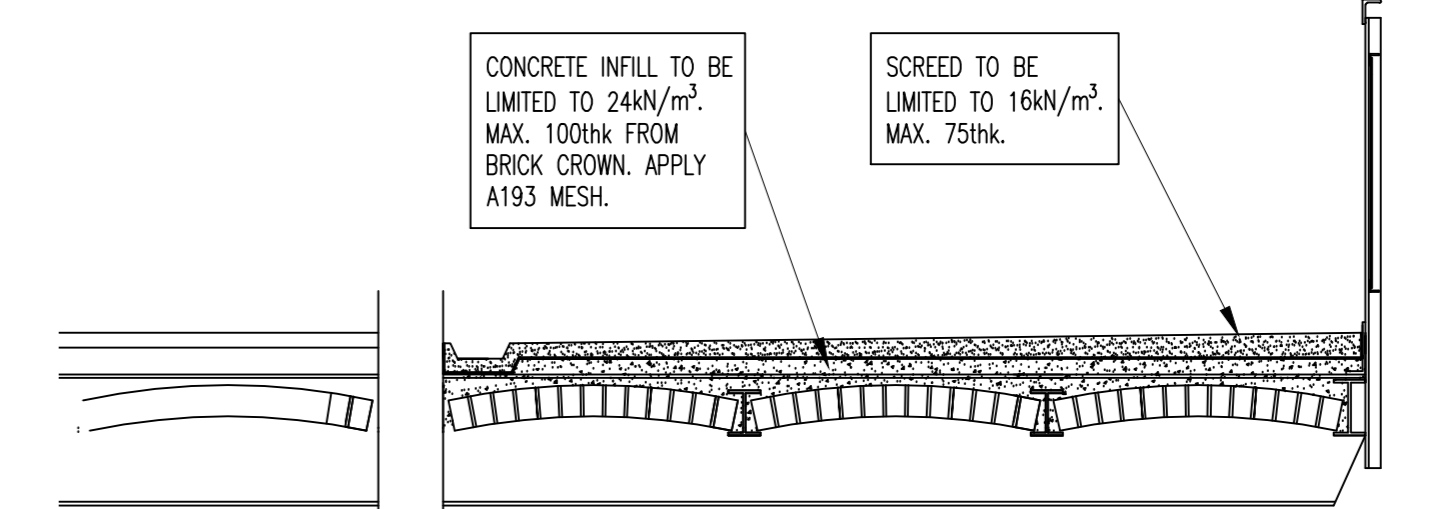
PHOTOS OF P1  
REPAIR C TO BE APPLIED TO P1



PHOTOS OF SB3-6  
REPAIR E TO BE APPLIED TO SB3-6



PHOTOS OF SB3-16 AND SB3-17  
REPAIR F TO BE APPLIED ON SB3-16 AND SB3-17



SECTION THRO' TYPICAL PROPOSED WALKWAY  
(SCALE 1:25)

Rev.	Date	By	Issue
P1	30.08.16	MC	FIRST ISSUE

STANLEY SIDINGS LTD

Project

STABLES MARKET

Title

REMEDIAL WORKS FOR  
CANTILEVER WALKWAY  
PLAN SECTIONS & DETAILS



CONSTRUCTION

Drawn	SLS	AS NOTED	AS NOTED	AS NOTED	AS NOTED
Date	AUG 16	Eng	MPC	CHA	App'd
File Ref.					PM