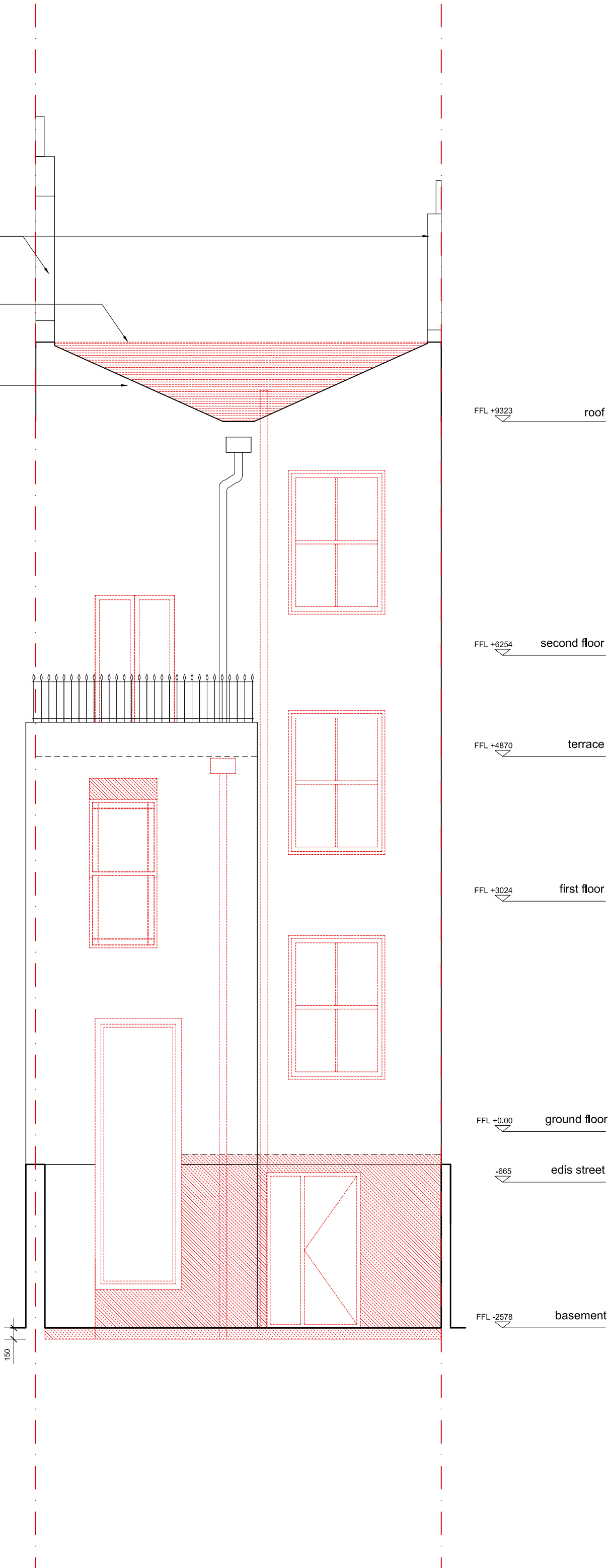


DEMOLITION

NOTE:



Coping stones to remove
Roof to remove
Parapet retained

FFL +9323 roof
FFL +6254 second floor
FFL +4870 terrace
FFL +3024 first floor
FFL +0.00 ground floor
-665 edis street
FFL -2578 basement



Martin Evans Architects ©	
18 Charlotte Road London EC2A 3PB Tel 020 7729 2474	
JOB	17, EDIS STREET NWT 8LE LONDON
TITLE DEMOLITION REAR ELEVATION	
DATE	25.02.2014
SCALE	1:50 @ A3
DRAWN	CF
DRAWING NO. EDI-DEM-GA-07	