

**Fitzjohn's Avenue, NW3**

Prepared for the London Borough of Camden

**Planning, Design and Access Statement**

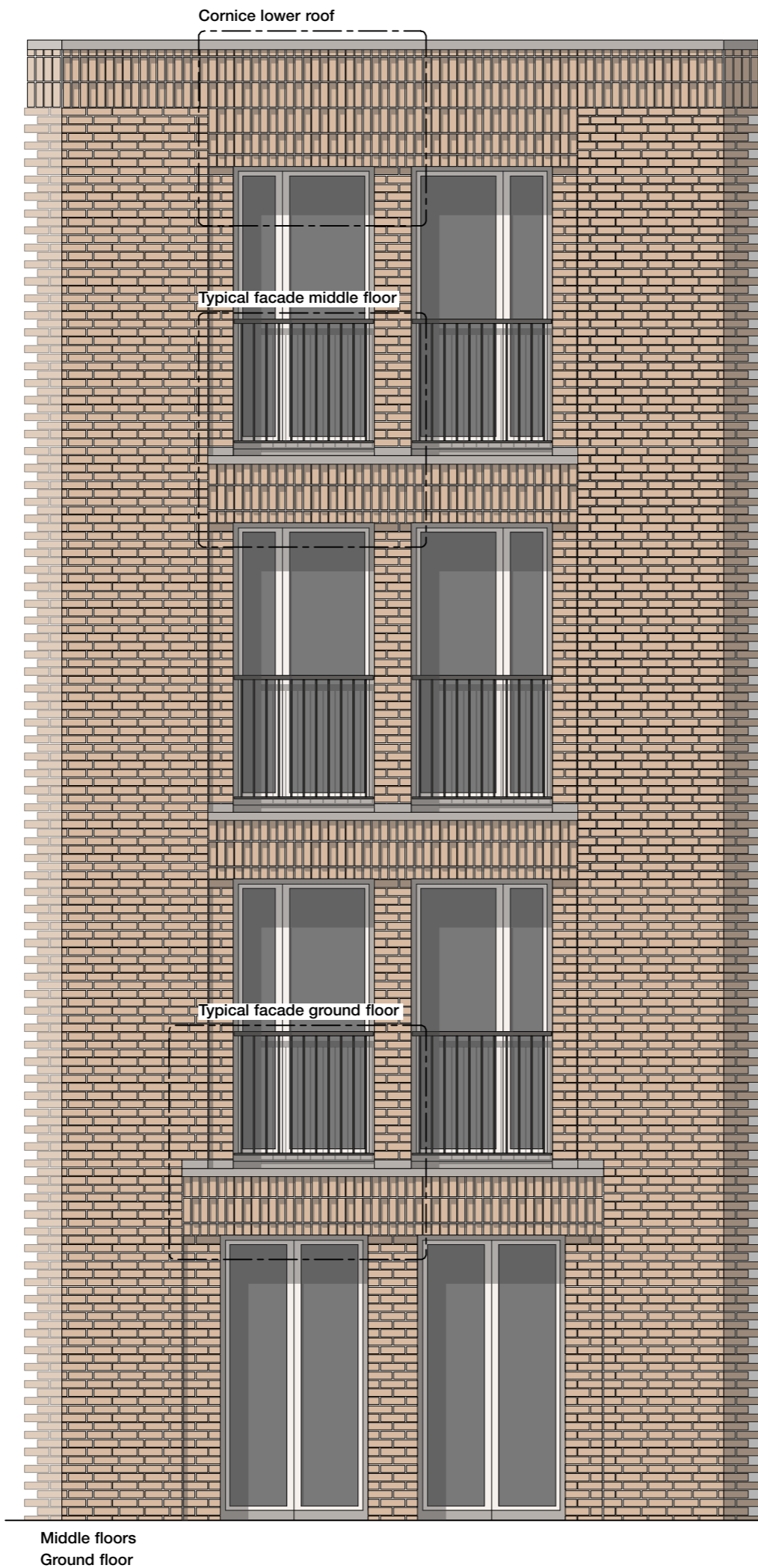
Planning condition n.3 - Details and Materials

## Introduction

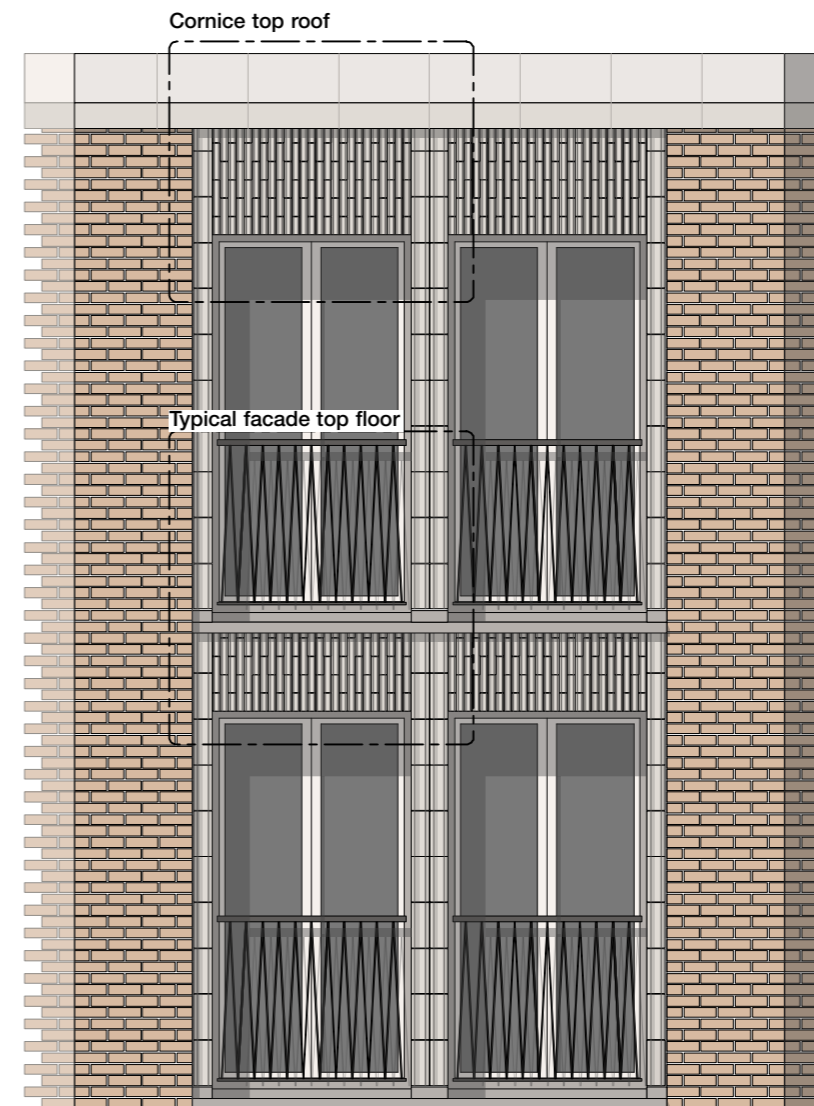
The series of drawings included in the following document illustrate the typical façade conditions across the project and the detailing of the main elements of the facade:

- Brickwork: bond, lintels, window reveals and cornices.
- Windows, sills and balustrades.
- Roof parapets and flushings.

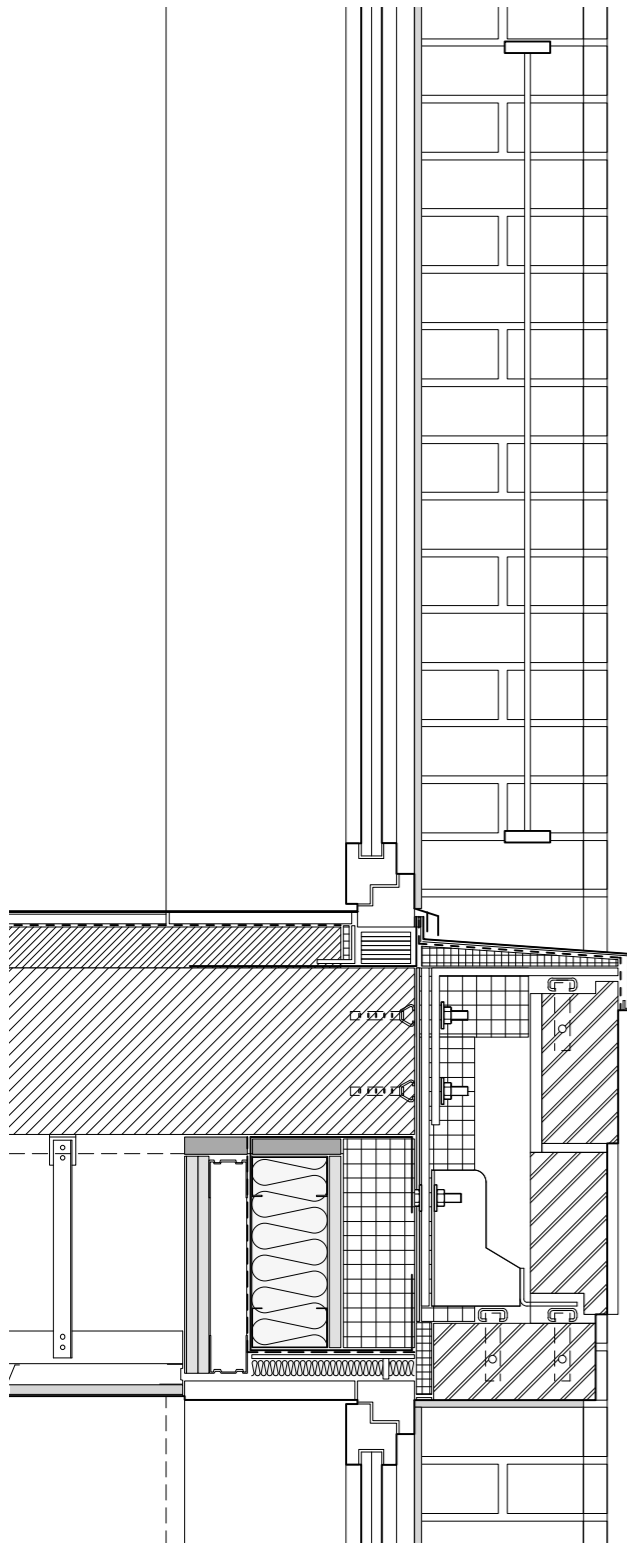
This information incorporates the design principles and materials discussed and agreed with Charlie Rose following on the site visit and sample panel review on the 1st of December.



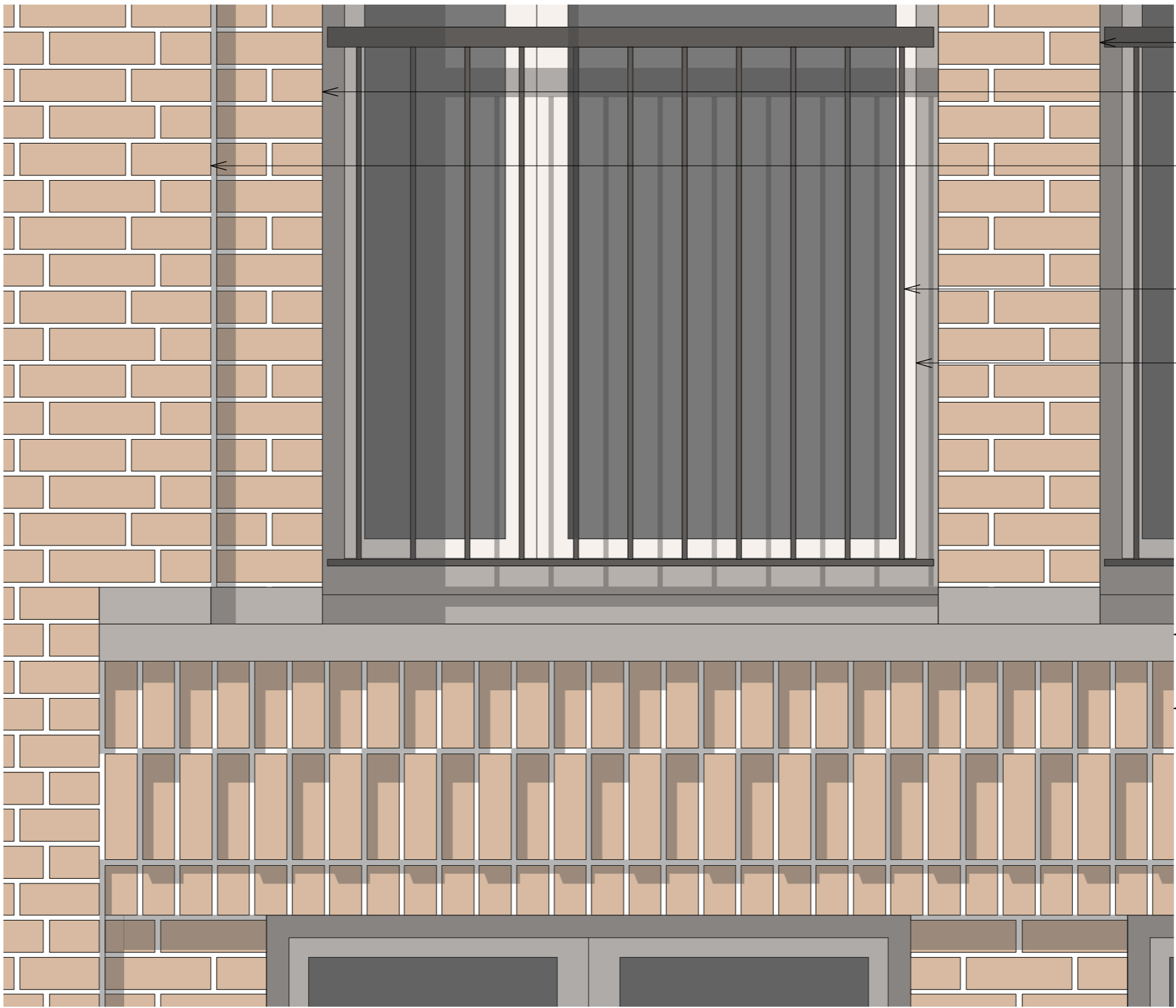
Middle floors  
Ground floor



Top floors

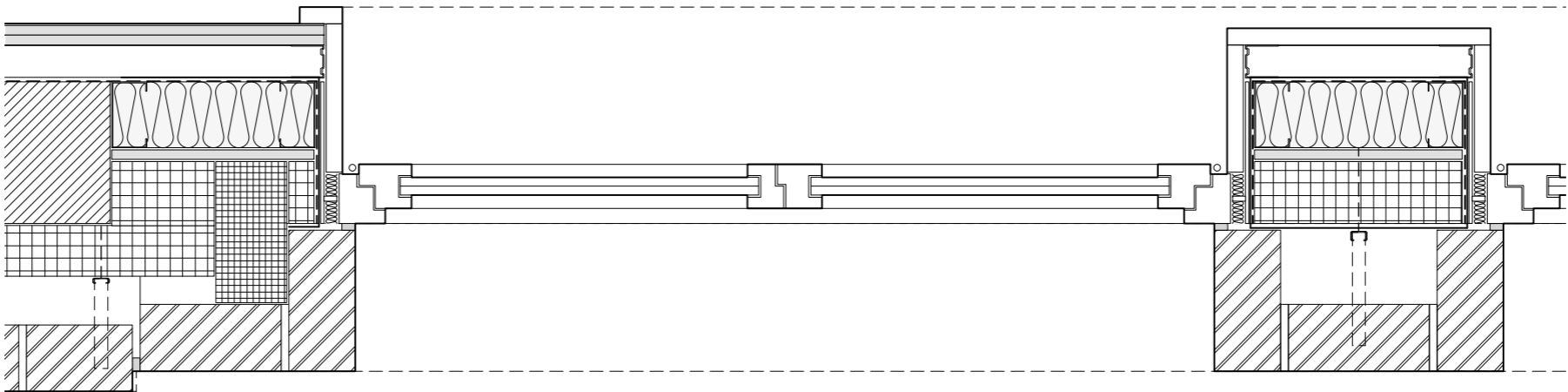


Section

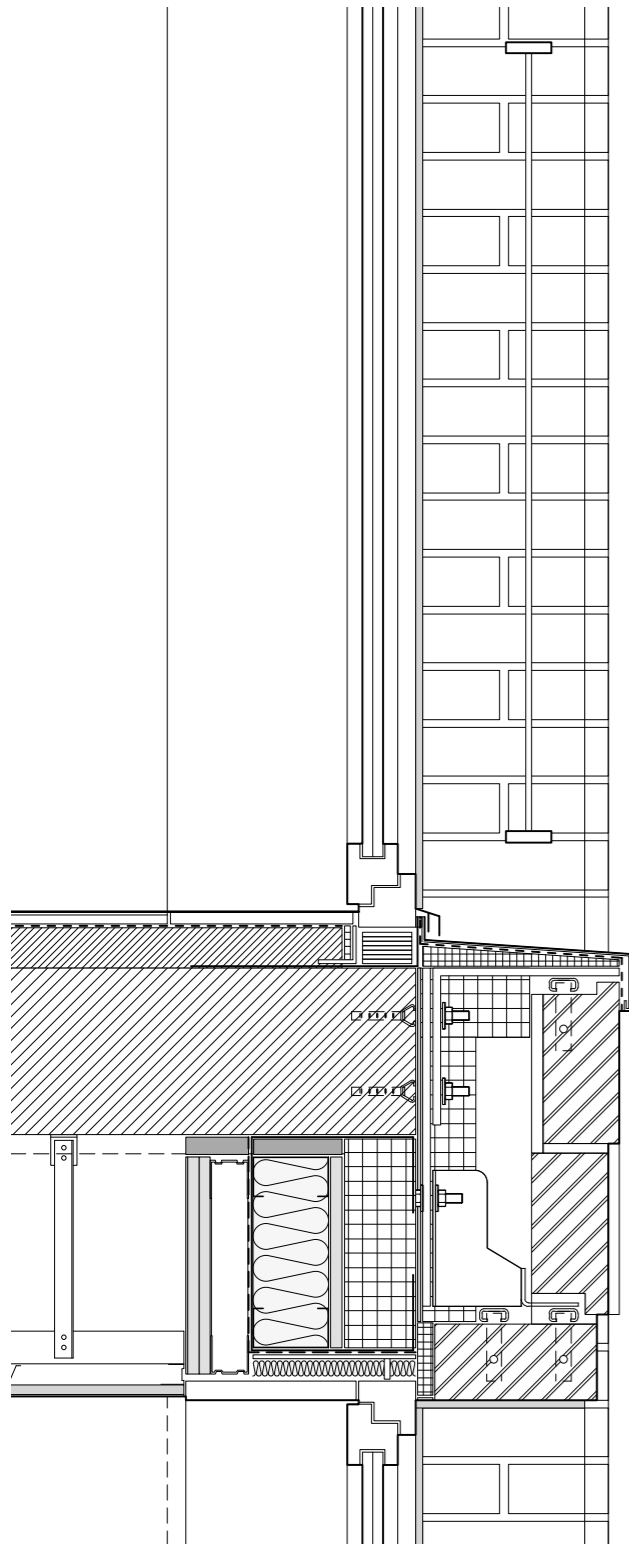


Elevation

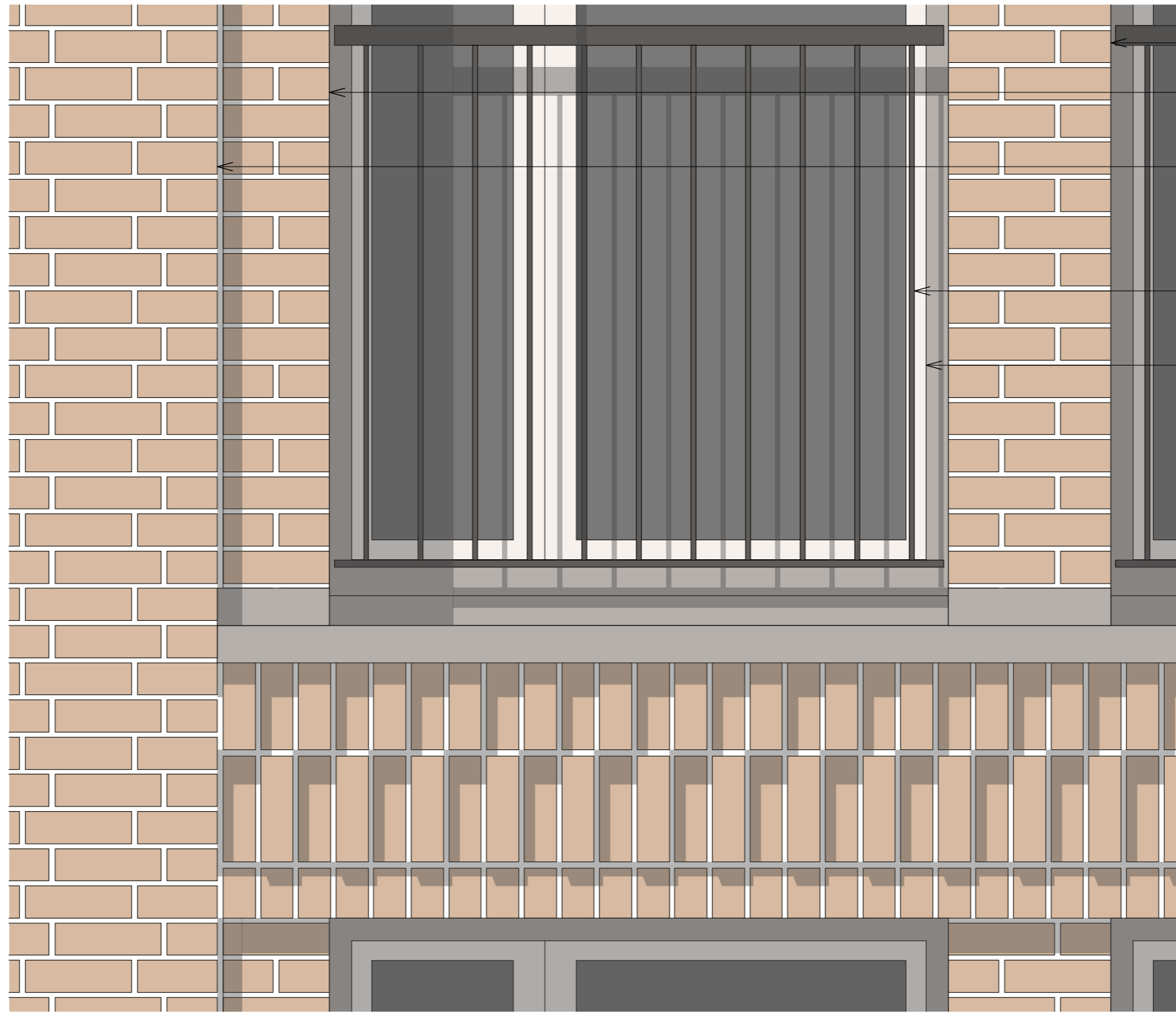
- Brickwork recess and column:  
Ibstock Olde English Grey A2640A  
214x65x101 / stretcher bond / perp  
12, bed 10 / flush pointing
- Brickwork main facade:  
Ibstock Olde English Grey A2640A  
214x65x101 / staggered stretcher bond / perp  
12, bed 10 / flush pointing
- Steel balustrade / PPC metallic matt RAL finish /  
dark grey / steel section handrail
- Aluminium composite window/ PPC metallic  
matt RAL finish / frame colour NCS S  
4005-Y20-R / casement colour NCS S 1002-R
- Aluminium sill and flushing / PPC metallic matt  
RAL finish / colour NCS S 4005-Y20-R
- Brickwork lintel:  
Ibstock Olde English Grey A2640A  
214x65x101 / Rowlock course-lintel with soldier  
courses on top, alternate projecting 15mm /  
joints perp 10, bed 12 / flush pointing F10/110



Plan

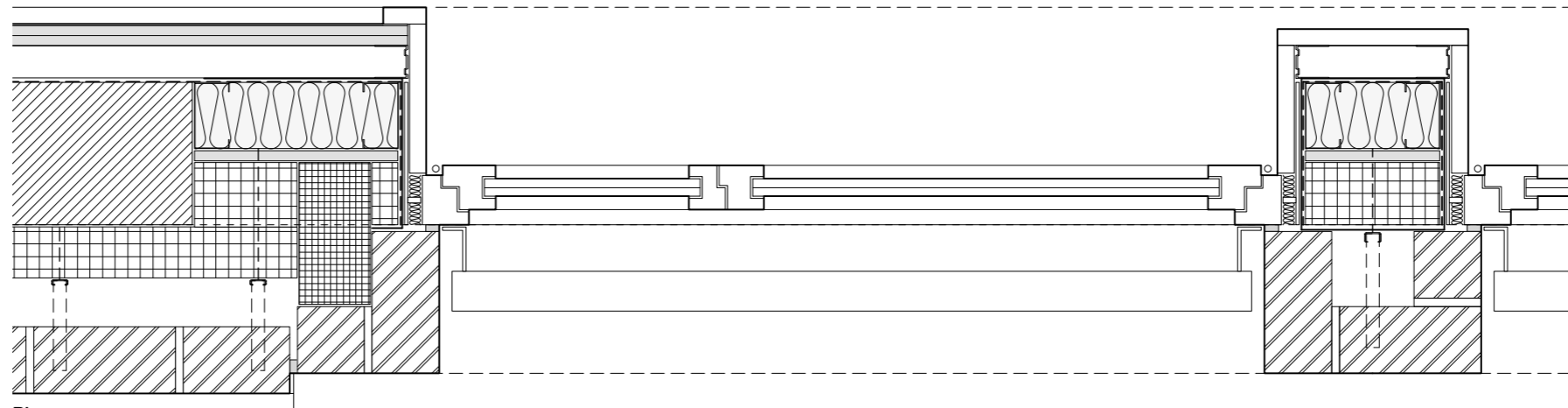


Section

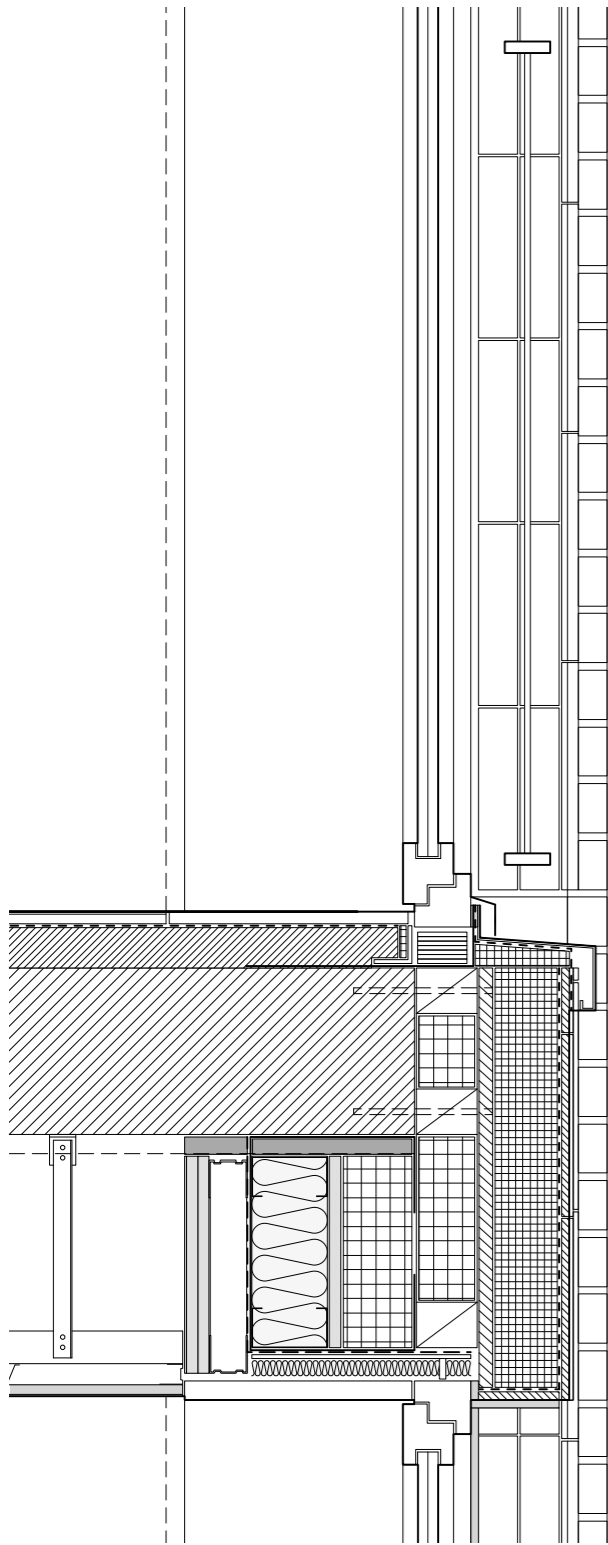


Elevation

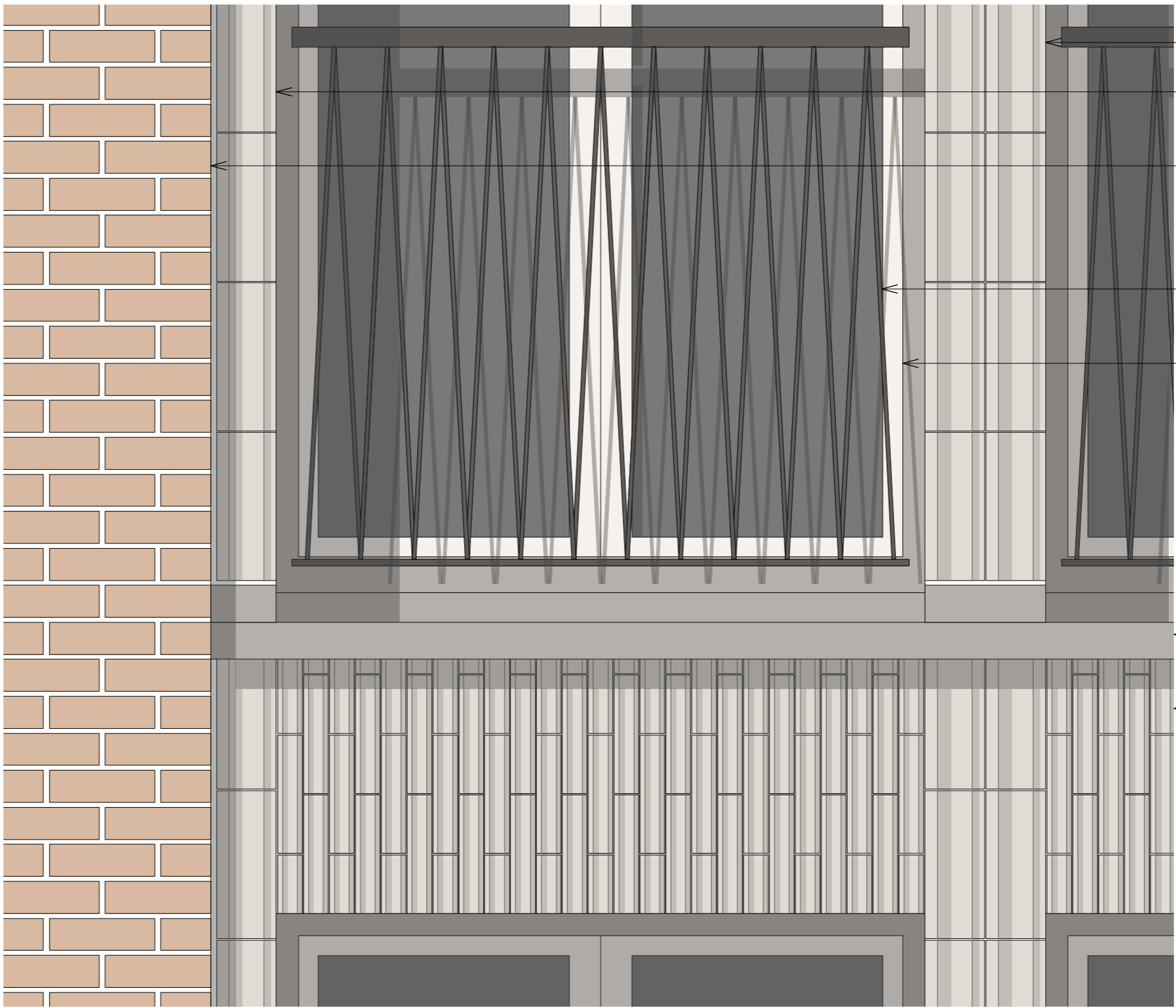
- Brickwork recess and column:  
Ibstock Olde English Grey A2640A  
214x65x101 / stretcher bond / perp  
12, bed 10 / flush pointing
- Brickwork main facade:  
Ibstock Olde English Grey A2640A  
214x65x101 / staggered stretcher bond / perp  
12, bed 10 / flush pointing
- Steel balustrade / PPC metallic matt RAL finish /  
dark grey / steel section handrail
- Aluminium composite window/ PPC metallic  
matt RAL finish / frame colour NCS S  
4005-Y20-R / casement colour NCS S 1002-R
- Aluminium sill and flushing / PPC metallic matt  
RAL finish / colour NCS S 4005-Y20-R
- Brickwork lintel:  
Ibstock Olde English Grey A2640A  
214x65x101 / Rowlock course-lintel with soldier  
courses on top, alternate projecting 15mm /  
joints perp 10, bed 12 / flush pointing F10/110



Plan

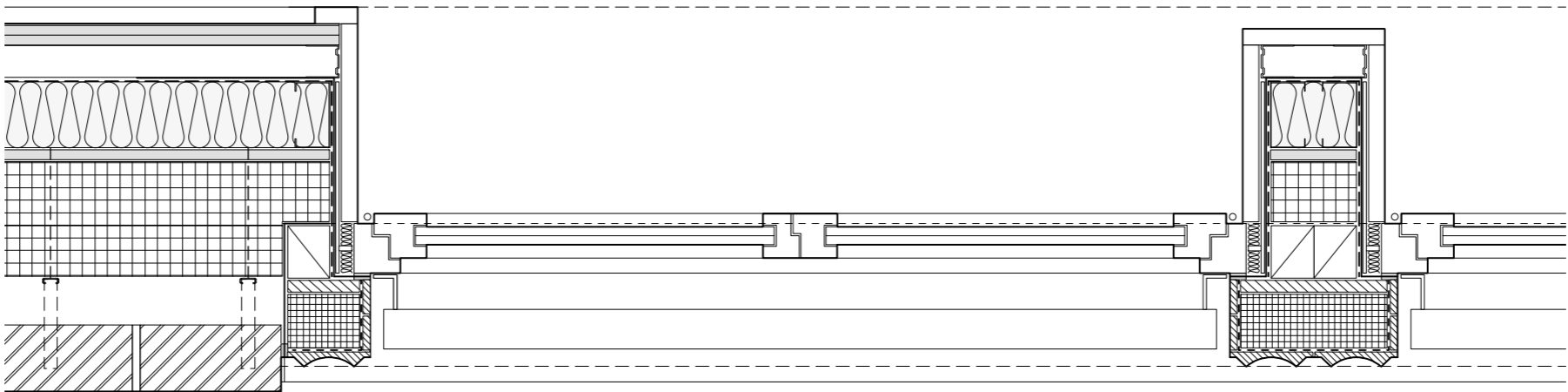


Section



Elevation

- ← Tiles recess and column:  
 Profiled glazed tiles CRAFT Agrob Buchtal  
 9026-2144 front / Flat glazed tiles CRAFT Agrob  
 Buchtal 9026-2120 in the reveal
- ← Brickwork main facade:  
 Ibstock Olde English Grey A2640A  
 214x65x101 / stretcher bond / perp 12, bed 10 /  
 flush pointing
- ← Steel balustrade / PPC metallic matt RAL finish /  
 dark grey / steel section handrail
- ← Aluminium composite window/ PPC metallic  
 matt RAL finish / frame colour NCS S  
 4005-Y20-R / casement colour NCS S 1002-R
- ← Aluminium sill and flushing / PPC metallic matt  
 RAL finish / colour NCS S 4005-Y20-R
- ← Tiles lintel:  
 Profiled glazed tiles CRAFT Agrob Buchtal  
 9026-2150 front / Flat glazed tiles CRAFT Agrob  
 Buchtal 9026-2120 in the reveal



Plan

