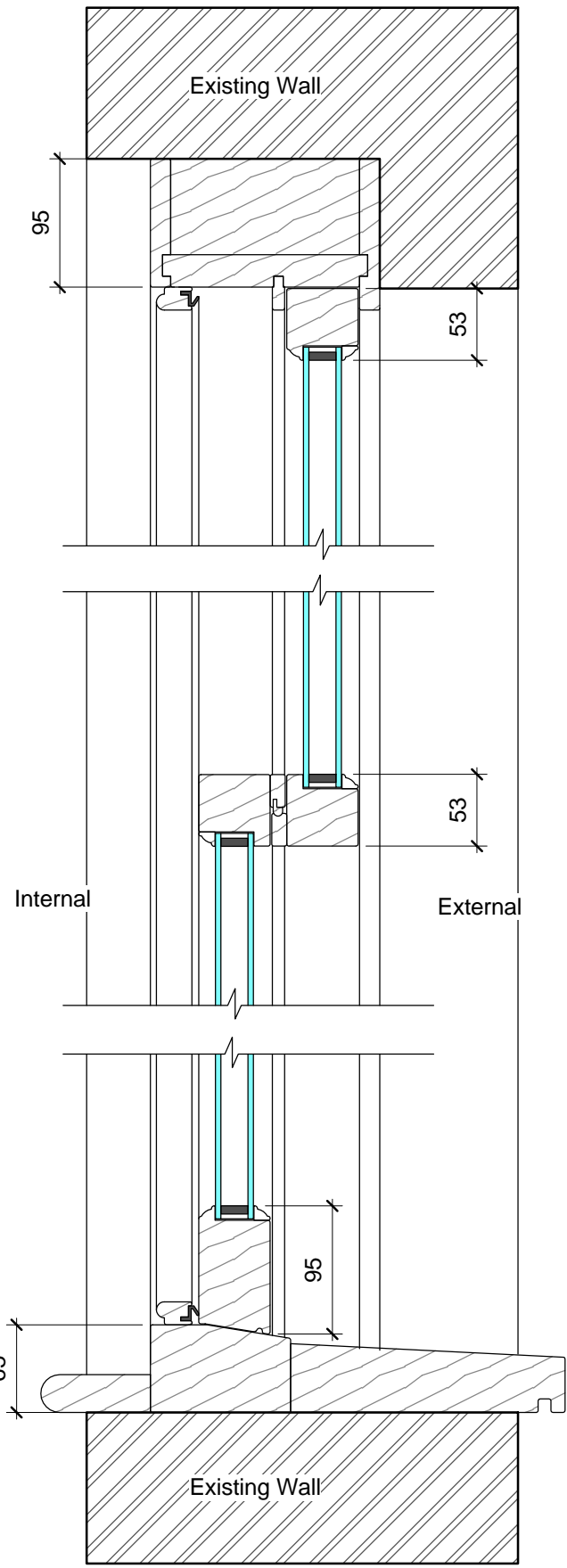
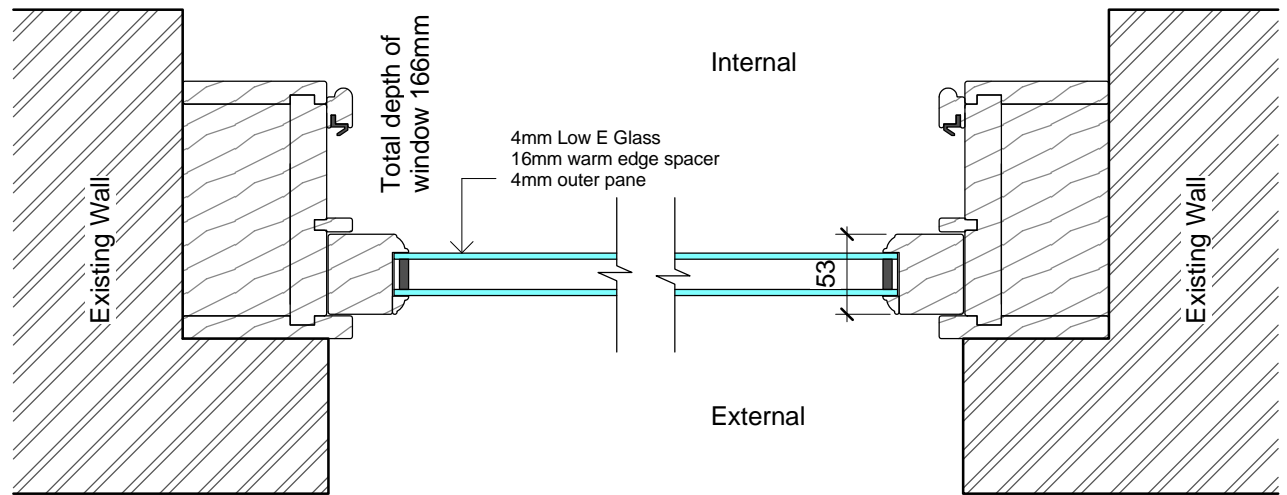


Elevations (External face, 1:20@A3)

- Note**
- White painted timber sash windows
 - U-value to achieve 1.4 W/m²K or better
 - All glazing is double glazed unit
 - All windows to have Trickle Vents
 - External appearance to match existing
 - Lower half of bay windows to be "Toughened Glass" to both panes of double glazing



Section Detail (1:5@A3)



Plan Detail (1:5@A3)