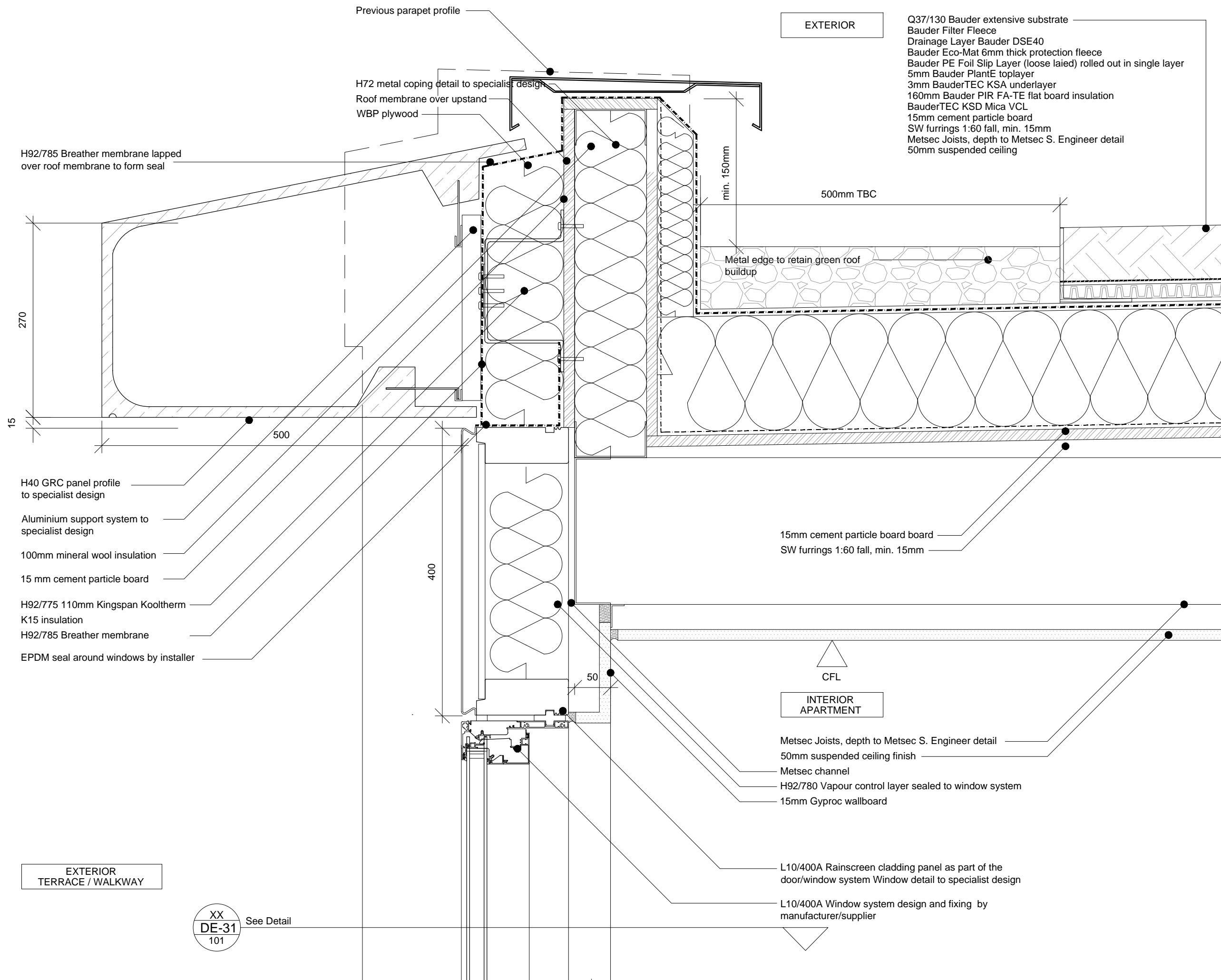


This drawing and design is for use solely in connection with the project described below. The drawing and design is the copyright of Avanti Architects Ltd, and must not be re-issued, loaned or copied without written consent. All dimensions and setting out to be checked on site before construction. This drawing is to be read in conjunction with all other information relevant to the project. Any apparent discrepancy is to be brought to the attention of Avanti Architects Ltd. Do not scale from this drawing.

Notes



- Q37/130 Bauder extensive substrate
- Bauder Filter Fleece
- Drainage Layer Bauder DSE40
- Bauder Eco-Mat 6mm thick protection fleece
- Bauder PE Foil Slip Layer (loose laied) rolled out in single layer
- 5mm Bauder PlantE toplayer
- 3mm BauderTEC KSA underlayer
- 160mm Bauder PIR FA-TE flat board insulation
- BauderTEC KSD Mica VCL
- 15mm cement particle board
- SW furrings 1:60 fall, min. 15mm
- Metsec Joists, depth to Metsec S. Engineer detail
- 50mm suspended ceiling

Revision	Date	Drawn by	Checked	Description

Scale	Size	Date First Issue
1:5	A3	18/07/16
Drawn by	Checked by	
SJ	AM	

Project
Tybalds Estate

Drawing
Revised overbuild parapet/window junction

Drawing number
12026-T-SK-51

Revision
-

Status
-



EXTERIOR
TERRACE / WALKWAY

INTERIOR
APARTMENT

XX
DE-31 See Detail
101