



**DO NOT SCALE FROM THIS DRAWING**  
 DRAWING TO BE READ IN CONJUNCTION WITH ALL OTHER ARCHITECTS AND ENGINEERS CONTRACT DRAWING & SPECIFICATIONS. ANY DISCREPANCIES MUST BE BROUGHT TO THE ATTENTION OF THE ARCHITECT IMMEDIATELY.  
 THE CONTRACTOR MUST VERIFY ALL DIMENSIONS BY SITE MEASUREMENT BEFORE ORDERING MATERIALS OR MANUFACTURING COMPONENTS.  
 SUBSTITUTE MATERIALS & PRODUCTS TO THOSE NAMED WILL BE ACCEPTABLE IF PROVEN TO BE OF EQUAL OR HIGHER PERFORMANCE AND NOT IN CONFLICT WITH OTHER ELEMENTS.

NOTES  
 KEY:  
 Consented New associated with the Application ref: 2014/7902P  
 Proposed  
 Note:  
 For windows and doors please refer to schedules.



17.0m DATUM  
**SECTION A-A**



REV	DATE	DESCRIPTION
-	29.03.16	For Pre Application
A	06.05.16	General updates
B	26.05.16	General updates
C	18.11.16	For Planning

**FOR PLANNING**

JOB TITLE  
**Keats Grove  
 Hampstead**  
 DRAWING TITLE  
**Section AA  
 Proposed**  
 JOB No.      DESGN.      REV  
**546            D110            C**  
 DRAWN BY      SCALE (AT A3)      DATE  
**RFB            1:50 (1:100@A3)      Mar16**

**RICHARD GRIFFITHS ARCHITECTS**  
 5 Maldstone Mews, 72-76 Borough High Street, London SE1 1GN  
 T +44(0)20 7357 8788 | F +44(0)20 7403 7887  
 E admin@rgarchitects.com | www.rgarchitects.com

**DO NOT SCALE FROM THIS DRAWING**  
 DRAWING TO BE READ IN CONJUNCTION WITH ALL OTHER ARCHITECTS  
 AND ENGINEER'S CONTRACT DRAWING & SPECIFICATIONS.  
 ANY DISCREPANCIES MUST BE BROUGHT TO THE ATTENTION OF THE  
 ARCHITECT IMMEDIATELY.  
 THE CONTRACTOR MUST VERIFY ALL DIMENSIONS BY SITE  
 MEASUREMENT BEFORE ORDERING MATERIALS OR MANUFACTURING  
 COMPONENTS.  
 SUBSTITUTE MATERIALS & PRODUCTS TO THOSE NAMED WILL BE  
 ACCEPTABLE IF PROVEN TO BE OF EQUAL OR HIGHER PERFORMANCE  
 AND NOT IN CONFLICT WITH OTHER ELEMENTS.

NOTES  
 KEY:  
 Consented New associated with the Application  
 ref: 2014/7932/P  
 Proposed

Note:  
 For windows and doors please refer to schedules.



17.0m DATUM  
**SECTION B-B**

REV	DATE	DESCRIPTION
A	06.05.16	General updates
B	26.05.16	General updates
C	18.11.16	For Planning
D	08.12.16	For Planning



**FOR PLANNING**

JOB TITLE  
**Keats Grove  
 Hampstead**  
 DRAWING TITLE  
**Section BB  
 Proposed**

JOB No	DWG No	REV
546	D111	D
DRAWN BY	SCALE (AT A1)	DATE
RFB	1:50 (1:100@A3)	Mar16

**RICHARD GRIFFITHS ARCHITECTS**  
 5 Maidstone Mews, 72-76 Borough High Street, London SE1 1GN  
 T +44(0)20 7357 8788 | F +44(0)20 7403 7887  
 E admin@rgarchitects.com | www.rgarchitects.com

**DO NOT SCALE FROM THIS DRAWING**  
 DRAWING TO BE READ IN CONJUNCTION WITH ALL OTHER ARCHITECTS AND ENGINEER'S CONTRACT DRAWING & SPECIFICATIONS. ANY DISCREPANCIES MUST BE BROUGHT TO THE ATTENTION OF THE ARCHITECT IMMEDIATELY.  
 THE CONTRACTOR MUST VERIFY ALL DIMENSIONS BY SITE MEASUREMENT BEFORE ORDERING MATERIALS OR MANUFACTURING COMPONENTS.  
 SUBSTITUTE MATERIALS & PRODUCTS TO THOSE NAMED WILL BE ACCEPTABLE IF PROVEN TO BE OF EQUAL OR HIGHER PERFORMANCE AND NOT IN CONFLICT WITH OTHER ELEMENTS.

NOTES  
 KEY:  
 Consented New associated with the Application ref: 2014/7932/P  
 Proposed

Note:  
 For windows and doors please refer to schedules.



SECTION C-C

REV	DATE	DESCRIPTION
-	29.03.16	For Pre Application
A	06.05.16	General updates
B	26.05.16	General updates
C	18.11.16	For Planning

**FOR PLANNING**

JOB TITLE  
**Keats Grove**  
**Hampstead**  
 DRAWING TITLE  
**Section CC**  
 Proposed  
 JOB No: 546  
 DWD No: D112  
 REV: C  
 DRAWN BY: RFB  
 SCALE (AT A1): 1:50 (1:100@A3)  
 DATE: Mar16

**RICHARD GRIFFITHS ARCHITECTS**  
 5 Maidstone Mews, 72-76 Borough High Street, London SE1 1GN  
 T +44(0)20 7357 8788 | F +44(0)20 7403 7887  
 E admin@rgarchitects.com | www.rgarchitects.com



**DO NOT SCALE FROM THIS DRAWING**  
 DRAWING TO BE READ IN CONJUNCTION WITH ALL OTHER ARCHITECTS AND ENGINEERS CONTRACT DRAWING & SPECIFICATIONS. ANY DISCREPANCIES MUST BE BROUGHT TO THE ATTENTION OF THE ARCHITECT IMMEDIATELY.  
 THE CONTRACTOR MUST VERIFY ALL DIMENSIONS BY SITE MEASUREMENT BEFORE ORDERING MATERIALS OR MANUFACTURING COMPONENTS.  
 SUBSTITUTE MATERIALS & PRODUCTS TO THOSE NAMED WILL BE ACCEPTABLE IF PROVEN TO BE OF EQUAL OR HIGHER PERFORMANCE AND NOT IN CONFLICT WITH OTHER ELEMENTS.

NOTES:  
 KEY:  
 Consented New associated with the Application ref: 2014/7902P  
 Proposed

Note:  
 For windows and doors please refer to schedules.

17.0m DATUM  
 0m 1m 2m 3m 4m 5m

**SECTION D-D**

REV	DATE	DESCRIPTION
-	29.03.16	For Pre Application
A	06.05.16	General updates
B	26.05.16	General updates
C	18.11.16	For Planning

**FOR PLANNING**

JOB TITLE  
**Keats Grove**  
 Hampstead

DRAWING TITLE  
 Section DD  
 Proposed

JOB No.	DATE	REV
546	D113	C

DRAWN BY: RFB  
 SCALE (AT A3): 1:50 (1:100@A3)  
 DATE: Mar16

**RICHARD GRIFFITHS ARCHITECTS**  
 5 Maldstone Mews, 72-76 Borough High Street, London SE1 1GN  
 T +44(0)20 7357 8788 | F +44(0)20 7403 7887  
 E admin@rgarchitects.com | www.rgarchitects.com

DO NOT SCALE FROM THIS DRAWING

DRAWING TO BE READ IN CONJUNCTION WITH ALL OTHER ARCHITECTS AND ENGINEER'S CONTRACT DRAWING & SPECIFICATIONS. ANY DISCREPANCIES MUST BE BROUGHT TO THE ATTENTION OF THE ARCHITECT IMMEDIATELY. THE CONTRACTOR MUST VERIFY ALL DIMENSIONS BY SITE MEASUREMENT BEFORE ORDERING MATERIALS OR MANUFACTURING COMPONENTS. SUBSTITUTE MATERIALS & PRODUCTS TO THOSE NAMED WILL BE ACCEPTABLE IF PROVEN TO BE OF EQUAL OR HIGHER PERFORMANCE AND NOT IN CONFLICT WITH OTHER ELEMENTS.

NOTES  
KEY:  
Consented New associated with the Application ref: 2014/7932/P  
Proposed

Note:  
For windows and doors please refer to schedules.



17.0m DATUM  
0m 1m 2m 3m 4m 5m

SECTION E-E

REV	DATE	DESCRIPTION
-	29.03.16	For Pre Application
A	06.05.16	General updates
B	26.05.16	General updates
C	18.11.16	For Planning

FOR PLANNING

JOB TITLE  
**Keats Grove  
Hampstead**

DRAWING TITLE  
**Section EE  
Proposed**



JOB No	DWG No	REV
546	D114	C

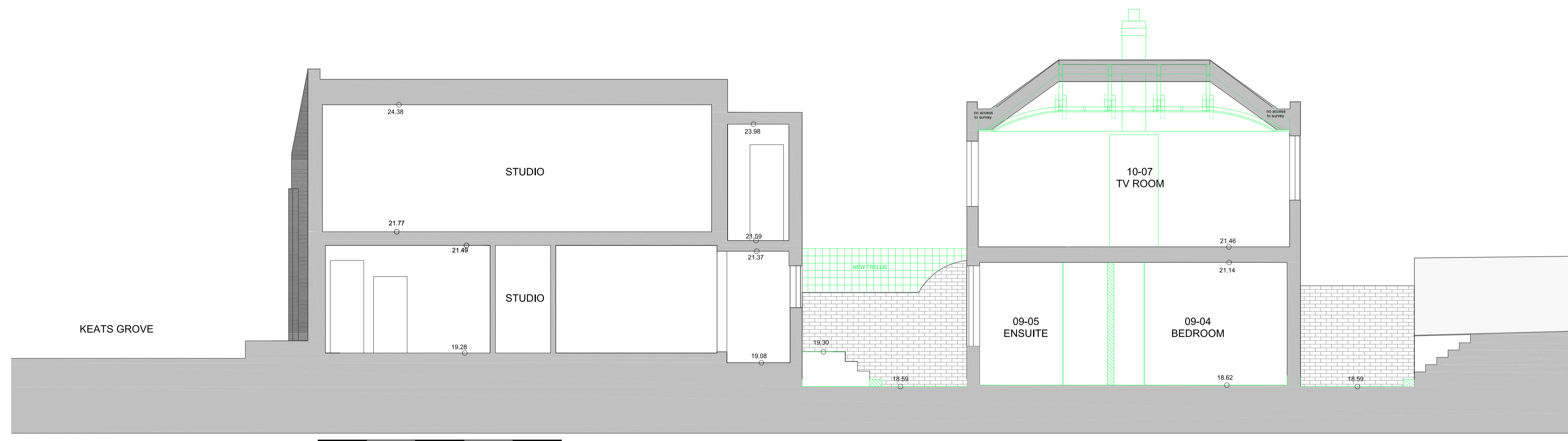
DRAWN BY	SCALE (AT A1)	DATE
RFB	1:50 (1:100@A3)	Mar16

**RICHARD GRIFFITHS ARCHITECTS**

5 Maidstone Mews, 72-76 Borough High Street, London SE1 1GN  
T +44(0)20 7357 8788 | F +44(0)20 7403 7887  
E admin@rgarchitects.com | www.rgarchitects.com

DO NOT SCALE FROM THIS DRAWING  
 DRAWING TO BE READ IN CONJUNCTION WITH ALL OTHER ARCHITECTS  
 AND ENGINEERS CONTRACT DRAWING & SPECIFICATIONS.  
 ANY DISCREPANCIES MUST BE BROUGHT TO THE ATTENTION OF THE  
 ARCHITECT IMMEDIATELY.  
 THE CONTRACTOR MUST VERIFY ALL DIMENSIONS BY SITE  
 MEASUREMENT BEFORE ORDERING MATERIALS OR MANUFACTURING  
 COMPONENTS.  
 SUBSTITUTE MATERIALS & PRODUCTS TO THOSE NAMED WILL BE  
 ACCEPTABLE IF PROVEN TO BE OF EQUAL OR HIGHER PERFORMANCE  
 AND NOT IN CONFLICT WITH OTHER ELEMENTS.

NOTES:  
 KEY:  
 Consented New associated with the Application  
 ref: 2014/7932P  
 Proposed



17.0m DATUM  
 0m 1m 2m 3m 4m 5m  
**SECTION F-F**

REV	DATE	DESCRIPTION
A	06.05.16	General updates
B	26.05.16	General updates
C	18.11.16	For Planning

**FOR PLANNING**

JOB TITLE  
**Keats Grove  
 Hampstead**

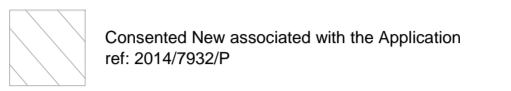

DRAWING TITLE  
**Section FF  
 Proposed**

JOB No.      DESK No.      REV  
**546            D115            C**

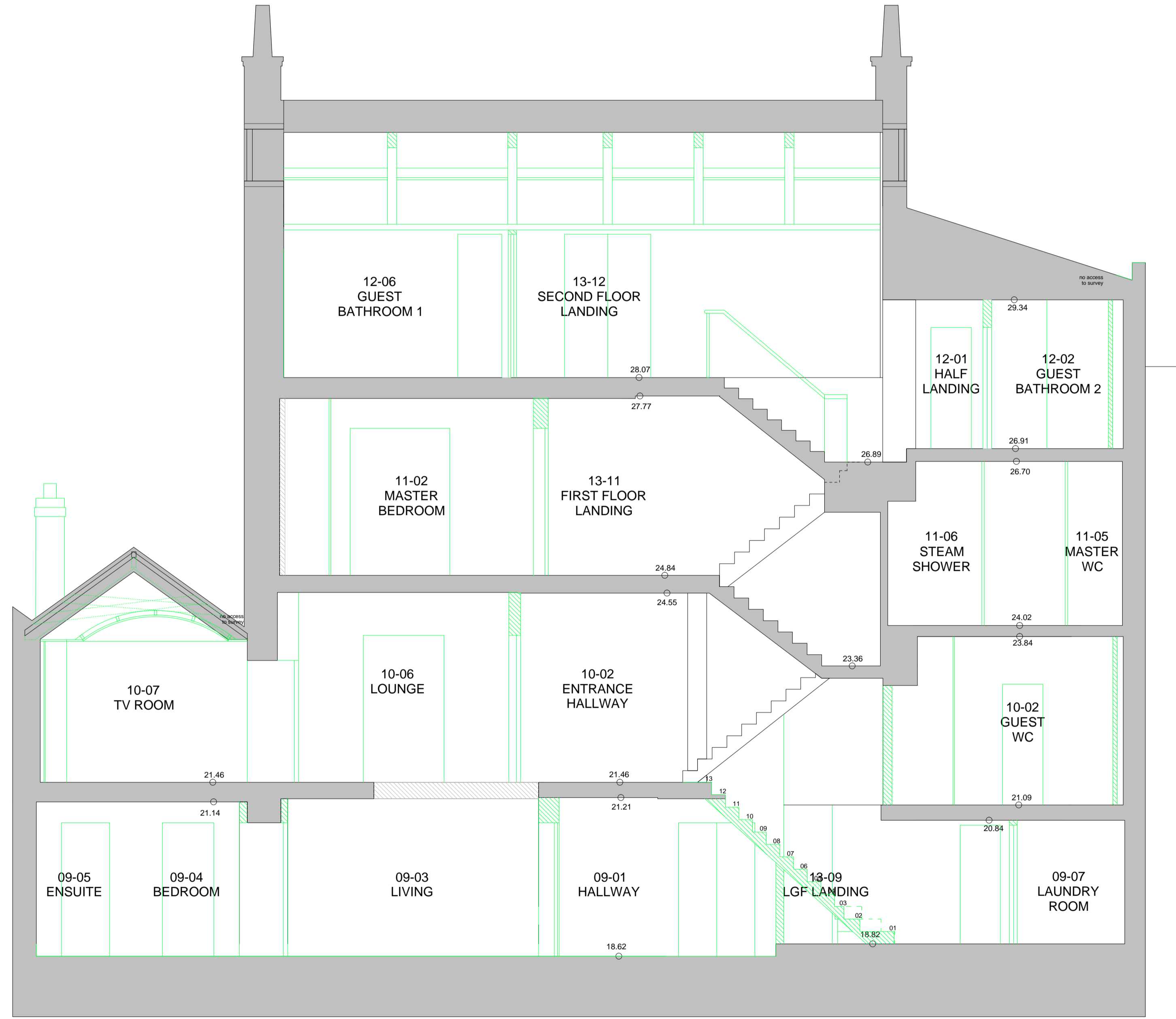
DRAWN BY      SCALE (AT A3)      DATE  
**RFB            1:50 (1:100@A3)      Mar16**

**RICHARD GRIFFITHS ARCHITECTS**  
 5 Maldstone Mews, 72-76 Borough High Street, London SE1 1GN  
 T +44(0)20 7357 8788 | F +44(0)20 7403 7887  
 E admin@rgarchitects.com | www.rgarchitects.com

**DO NOT SCALE FROM THIS DRAWING**  
 DRAWING TO BE READ IN CONJUNCTION WITH ALL OTHER ARCHITECTS AND ENGINEER'S CONTRACT DRAWING & SPECIFICATIONS. ANY DISCREPANCIES MUST BE BROUGHT TO THE ATTENTION OF THE ARCHITECT IMMEDIATELY.  
 THE CONTRACTOR MUST VERIFY ALL DIMENSIONS BY SITE MEASUREMENT BEFORE ORDERING MATERIALS OR MANUFACTURING COMPONENTS.  
 SUBSTITUTE MATERIALS & PRODUCTS TO THOSE NAMED WILL BE ACCEPTABLE IF PROVEN TO BE OF EQUAL OR HIGHER PERFORMANCE AND NOT IN CONFLICT WITH OTHER ELEMENTS.

**NOTES**  
**KEY:**  
  


**Note:**  
 For windows and doors please refer to schedules.



17.0m DATUM  
 0m 1m 2m 3m 4m 5m

**SECTION G-G**

REV	DATE	DESCRIPTION
-	29.03.16	For Pre Application
A	06.05.16	General updates
B	26.05.16	General updates
C	18.11.16	For Planning

**FOR PLANNING**

**JOB TITLE**  
 Keats Grove  
 Hampstead

**DRAWING TITLE**  
 Section GG  
 Proposed

JOB No	DWG No	REV
546	D116	C
DRAWN BY	SCALE (AT A1)	DATE
RFB	1:50 (1:100@A3)	Mar16

**RICHARD GRIFFITHS ARCHITECTS**  
 5 Maidstone Mews, 72-76 Borough High Street, London SE1 1GN  
 T +44(0)20 7357 8788 | F +44(0)20 7403 7887  
 E admin@rgarchitects.com | www.rgarchitects.com