

# XFN1-1/3/7

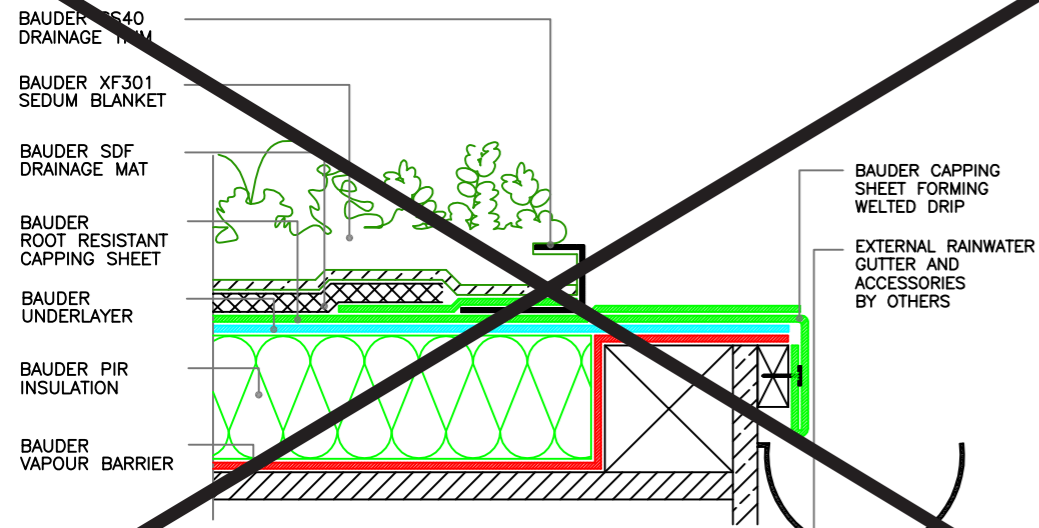
## Standard Uprand Details With Bauder SS40 Drainage Trim - Insulated - Flat Roof Option

## BAUDER TOTAL GREEN ROOF - XERO FLOR EXTENSIVE SEDUM SYSTEM

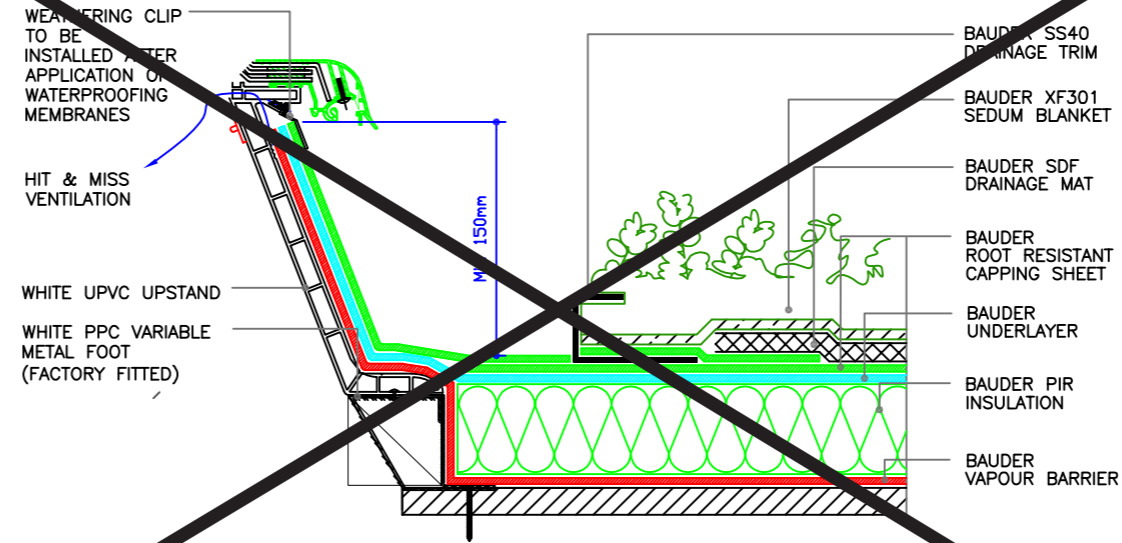
### Notes:

- These details are of a conceptual nature and should only be used as such and not included as part of a specification document. Please contact our Technical Department to ensure the details you require are appropriate and accurate.

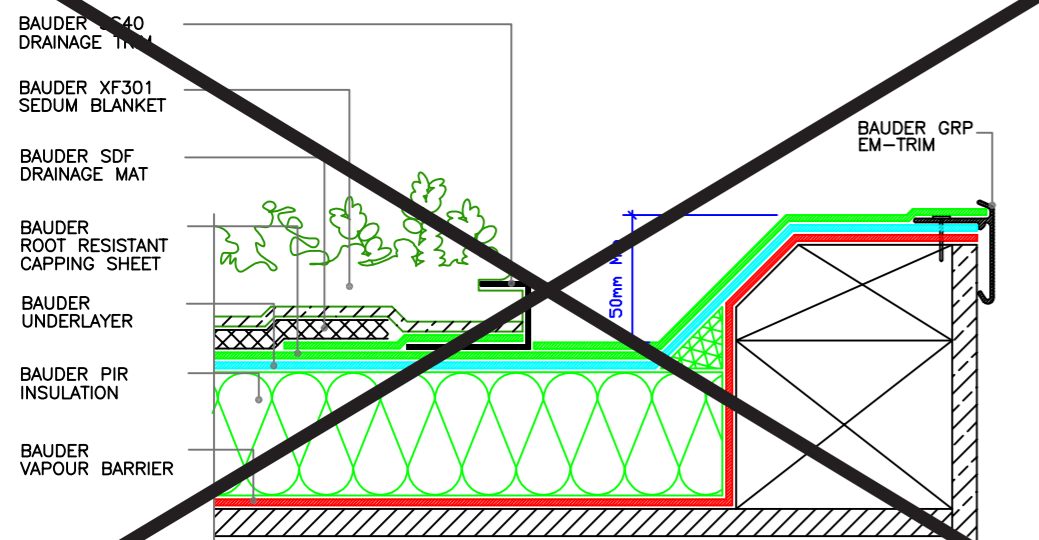
1. The minimum distance of 300mm is required between the top edge of the vertical insulation and the bottom of the roof insulation
2. The minimum recommended height for constructing waterproofing detail is 150mm from the top of the installed landscaping / surface



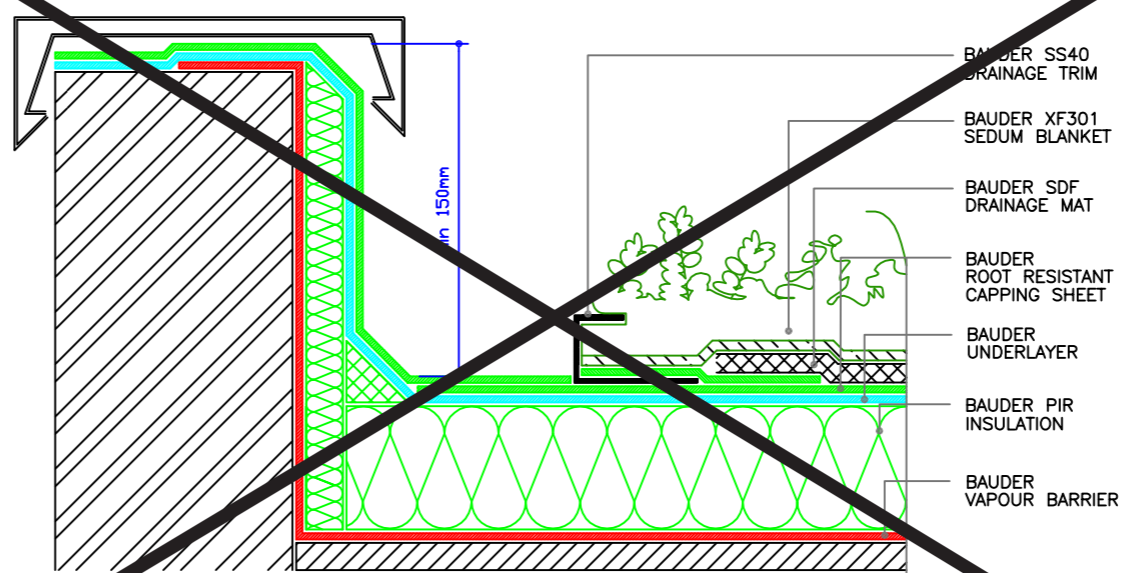
**PERIMETER EDGE DETAIL TO EXTERNAL GUTTER WITH WELTED DRIP**



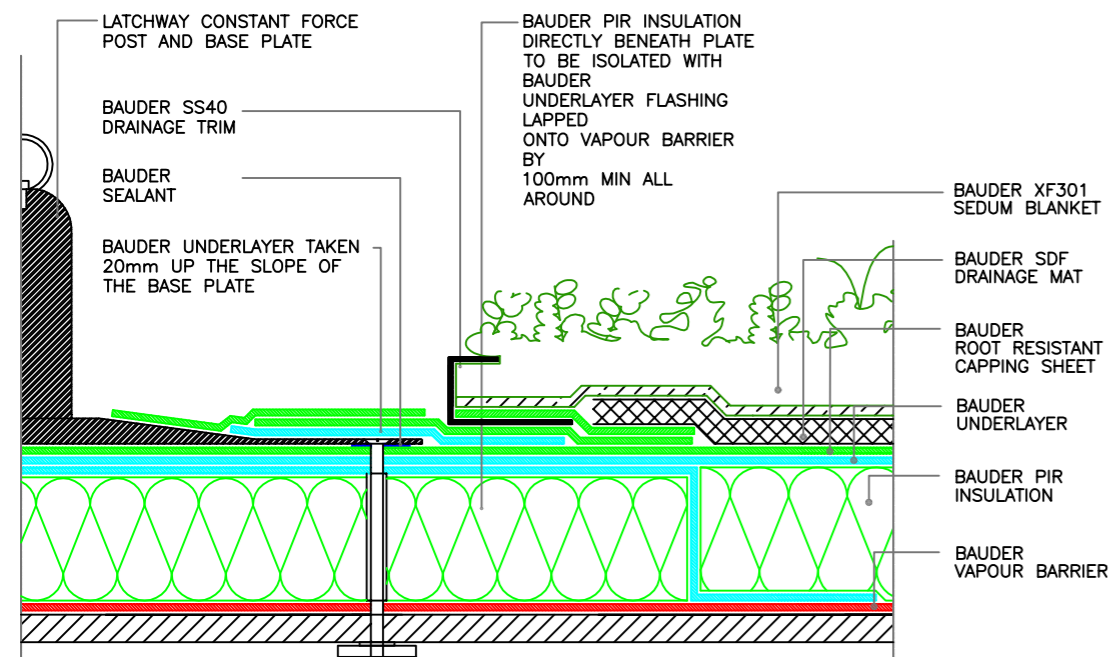
**DETAIL TO INSULATED ROOFLIGHT UPSTAND KERB**



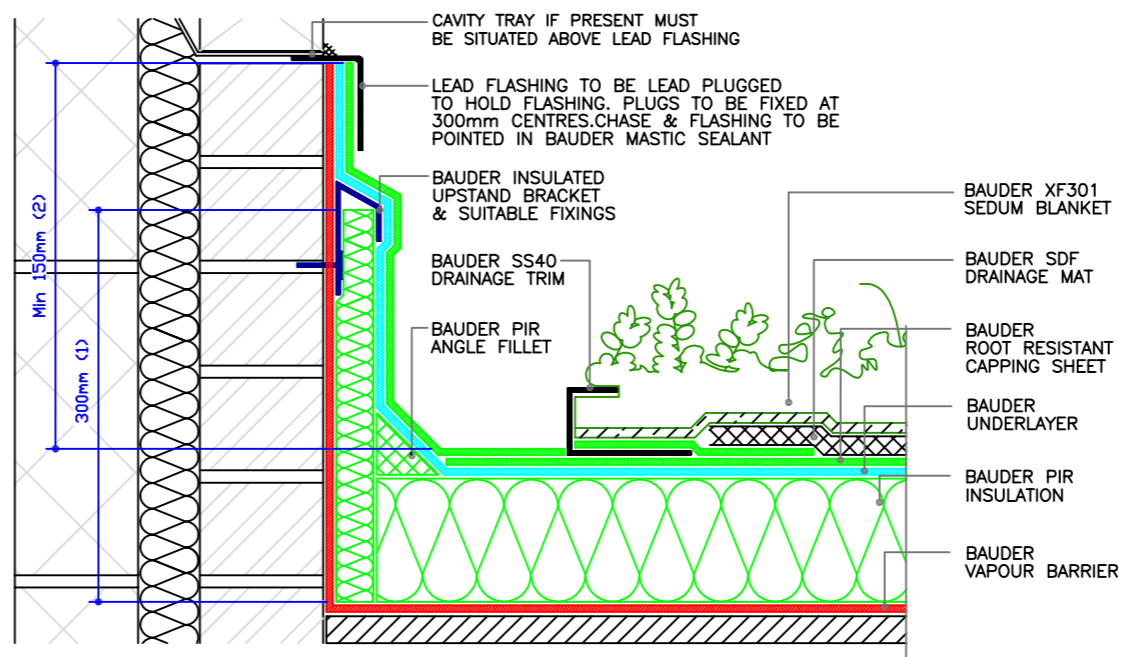
**EAVES DETAIL TO TIMBER KERB WITH NEW GRP TRIM**



**UPSTAND DETAIL TO INSULATED PARAPET WALL WITH METAL CAPPING**



**DETAIL TO LATCHWAY CONSTANT FORCE POST**



**UPSTAND DETAIL TO BRICKWORK (INSULATED CAVITY WALL)**

Issue	Date	Checked
-------	------	---------

1	MAY 08	
---	--------	--

**NOT TO SCALE**

**BAUDER**

**UK OFFICE**  
Bauder Limited  
Broughton House  
Broughton Road  
Ipswich  
Suffolk  
IP1 3QR  
England

T: +44 (0)1473 257671  
F: +44 (0)1473 230761  
E: technical@bauder.co.uk

**IRELAND**  
Bauder Limited  
O'Duffy Centre  
Cross Lane  
Carrickmacross  
Co. Monaghan  
Ireland

T: +353 (0)42 9692 333  
F: +353 (0)42 9692 839  
E: info@bauder.ie

[bauder.co.uk](http://bauder.co.uk)