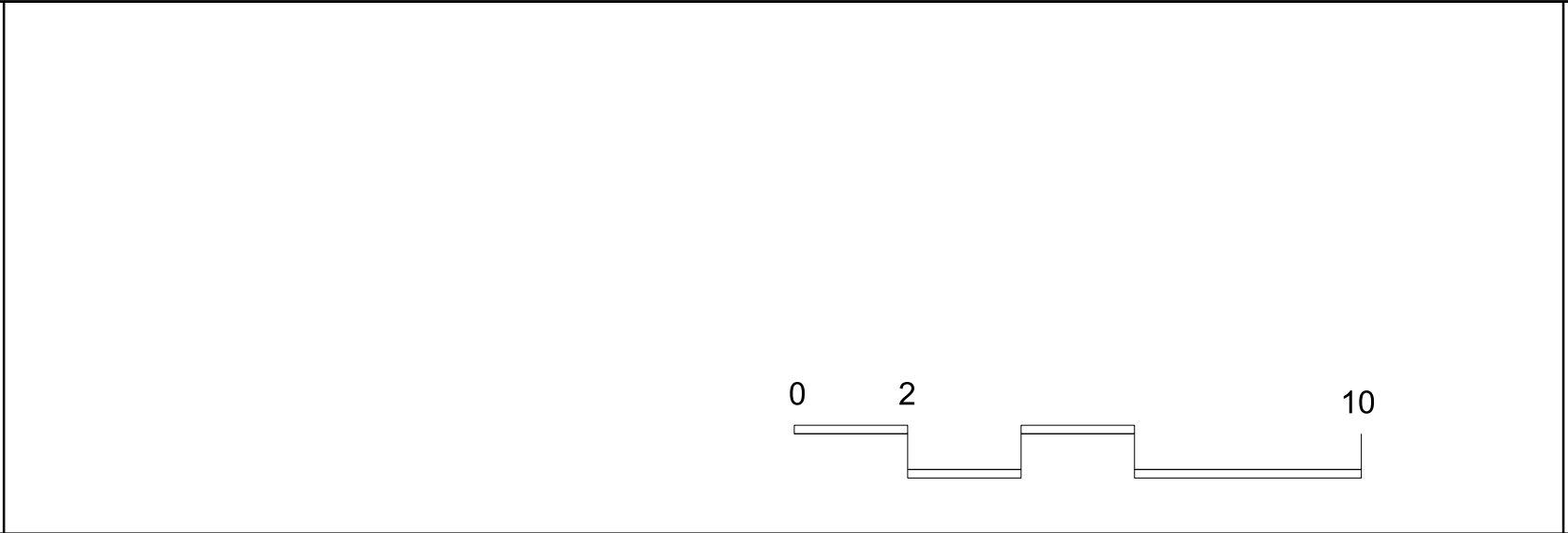


APPENDIX A

Proposed development plans



KEY
01 - Brickwork
02 - Metal framed glazed sliding doors
03 - Metal framed glazed doors
04 - Glazed balustrade
05 - Metal cladding balcony
06 - Metal framed glazed curtain walling
07 - Metal cladding infill
08 - Metal doors
09 - Metal louvers
10 - Metal clad roof profile
11 - Winter garden glazing
12 - Obscured glazed panel
13 - Metal railing

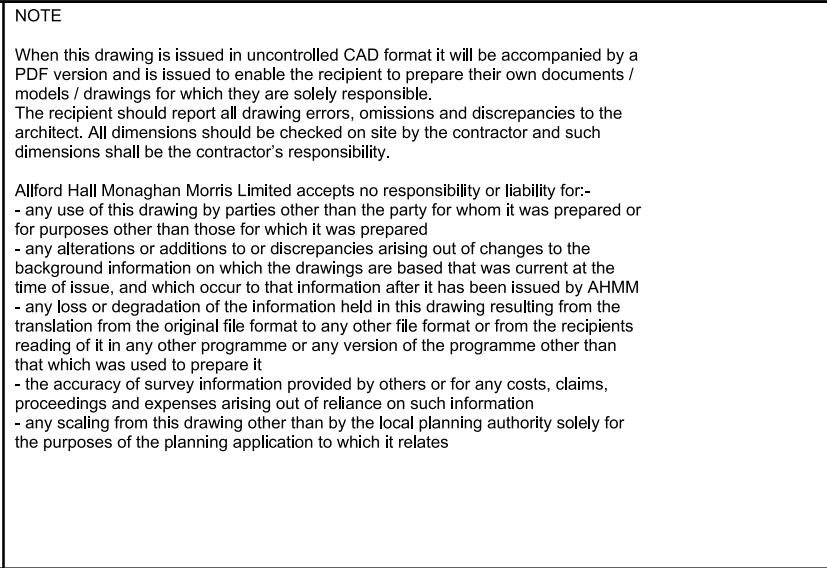


NOTE

When this drawing is issued in uncontrolled CAD format it will be accompanied by a PDF version and is issued to enable the recipient to prepare their own documents / models / drawings for which they are solely responsible. The recipient should report all drawing errors, omissions and discrepancies to the architect. All dimensions should be checked on site by the contractor and such dimensions shall be the contractor's responsibility.

Allford Hall Monaghan Morris Limited accepts no responsibility or liability for:-

- any use of this drawing by parties other than the party for whom it was prepared or for purposes other than those for which it was prepared
- any alterations or additions to or discrepancies arising out of changes to the background information on which the drawings are based that was current at the time of issue, and which occur to that information after it has been issued by AHMM
- any loss or degradation of the information held in this drawing resulting from the translation from the original file format to any other file format or from the recipient's reading of it in any other programme or any version of the programme other than that which was used to prepare it
- the accuracy of survey information provided by others or for any costs, claims, proceedings and expenses arising out of reliance on such information
- any scaling from this drawing other than by the local planning authority solely for the purposes of the planning application to which it relates



LOCATION			
Oval Road			
CENTRIC CLOSE			
drawing title / location			
PROPOSED EAST ELEVATION			
drawn by	checked	scale	status
KP	JR	1:125@A1; 1:250@A3	
project	zone	source	classification
16041			
drawing no.		revision	
(SK)_028			

ALLFORD HALL MONAGHAN MORRIS

ARCHITECTS LTD
MORELANDS, 5-23 OLD STREET LONDON EC1V 9HL
TEL 020 7251 5261 FAX 020 7251 5123 WEB WWW.AHMM.CO.UK

job title

CENTRIC CLOSE

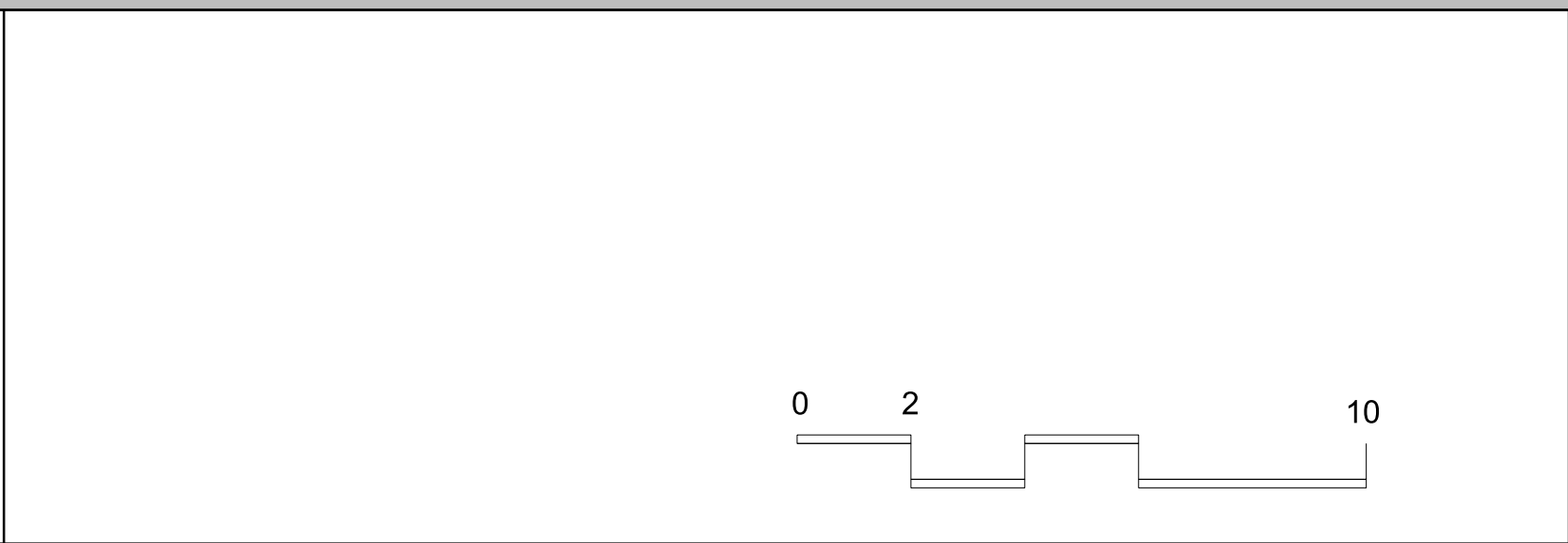
drawing title / location

PROPOSED EAST ELEVATION

drawn by	checked	scale	status
KP	JR	1:125@A1; 1:250@A3	
project	zone	source	classification
16041			
drawing no.		revision	
(SK)_028			



KEY
01 - Brickwork
02 - Metal framed glazed sliding doors
03 - Metal framed glazed doors
04 - Metal balustrade
05 - Metal cladding balcony
06 - Metal framed glazed curtain walling
07 - Metal cladding infill
08 - Metal doors
09 - Metal louvres
10 - Metal clad roof profile
11 - Winter garden glazing
12 - Obscured glazed panel
13 - Metal railing



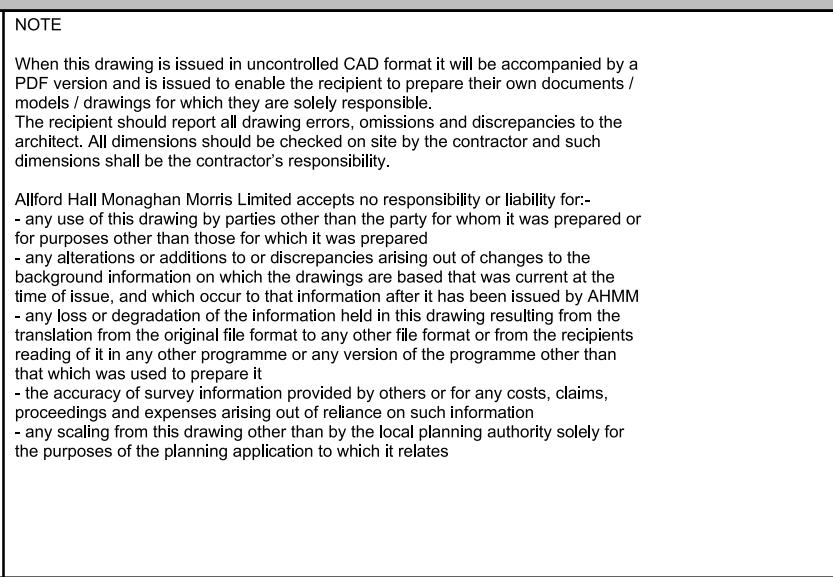
NOTE

When this drawing is issued in uncontrolled CAD format it will be accompanied by a PDF version and is issued to enable the recipient to prepare their own documents / models / drawings for which they are solely responsible.

The recipient should report all drawing errors, omissions and discrepancies to the architect. All dimensions should be checked on site by the contractor and such dimensions shall be the contractor's responsibility.

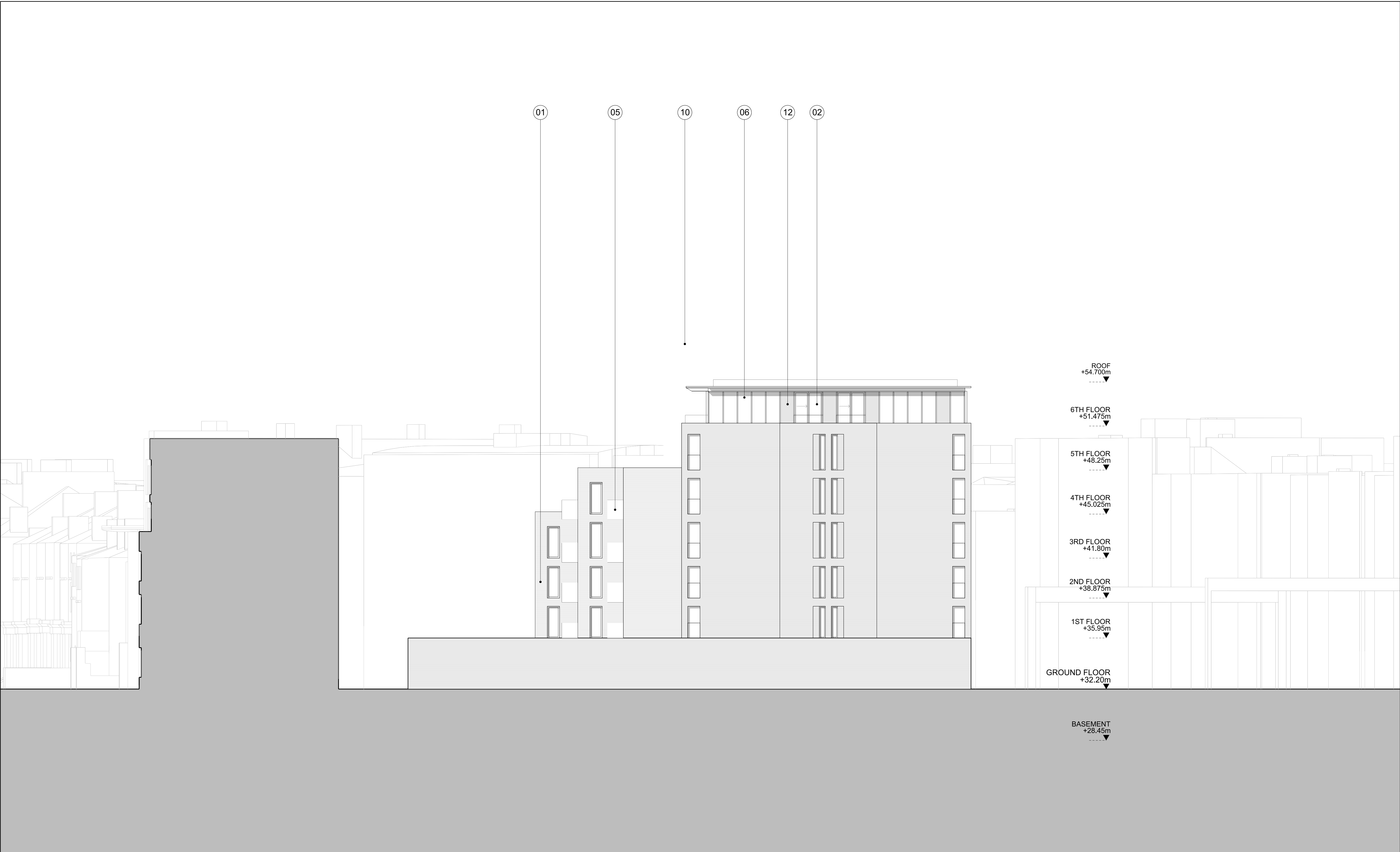
Allford Hall Monaghan Morris Limited accepts no responsibility or liability for:-

- any use of this drawing by parties other than the party for whom it was prepared or for purposes other than those for which it was prepared
- any alterations or additions to or discrepancies arising out of changes to the background information on which the drawings are based that was current at the time of issue, and which occur to that information after it has been issued by AHMM
- any loss or degradation of the information held in this drawing resulting from the translation from the original file format to any other file format or from the recipient's reading of it in any other programme or any version of the programme other than that which was used to prepare it
- the accuracy of survey information provided by others or for any costs, claims, proceedings and expenses arising out of reliance on such information
- any scaling from this drawing other than by the local planning authority solely for the purposes of the planning application to which it relates

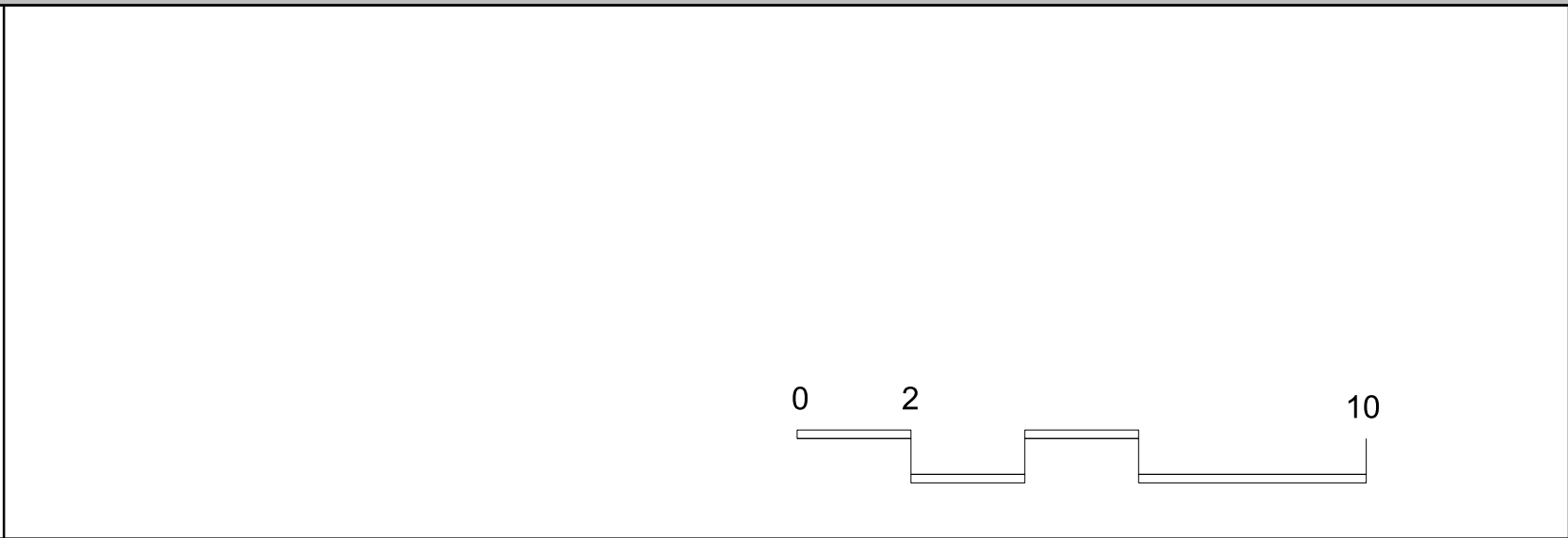


LOCATION			
Oval Road			

ALLFORD HALL MONAGHAN MORRIS			
ARCHITECTS LTD MORELANDS, 5-23 OLD STREET LONDON EC1V 9HL TEL 020 7251 5261 FAX 020 7251 5123 WEB WWW.AHMM.CO.UK			
job title			
CENTRIC CLOSE			
drawing title / location			
PROPOSED WEST ELEVATION			
drawn by	checked	scale	status
KP	JR	1:125@A1; 1:250@A3	
project	zone	source	classification
16041			
drawing no.			revision
(SK)_029			



KEY
01 - Brickwork
02 - Metal framed glazed sliding doors
03 - Metal framed glazed doors
04 - Glazed balustrade
05 - Metal cladding balcony
06 - Metal framed glazed curtain walling
07 - Metal cladding infill
08 - Metal doors
09 - Metal louvres
10 - Metal clad roof profile
11 - Winter garden glazing
12 - Obscured glazed panel
13 - Metal railing

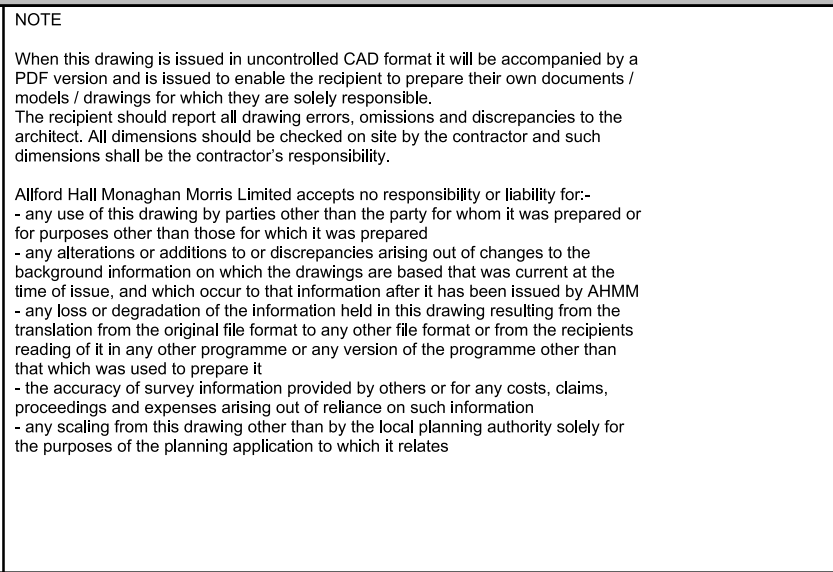


NOTE

When this drawing is issued in uncontrolled CAD format it will be accompanied by a PDF version and is issued to enable the recipient to prepare their own documents / models / drawings for which they are solely responsible. The recipient should report all drawing errors, omissions and discrepancies to the architect. All dimensions should be checked on site by the contractor and such dimensions shall be the contractor's responsibility.

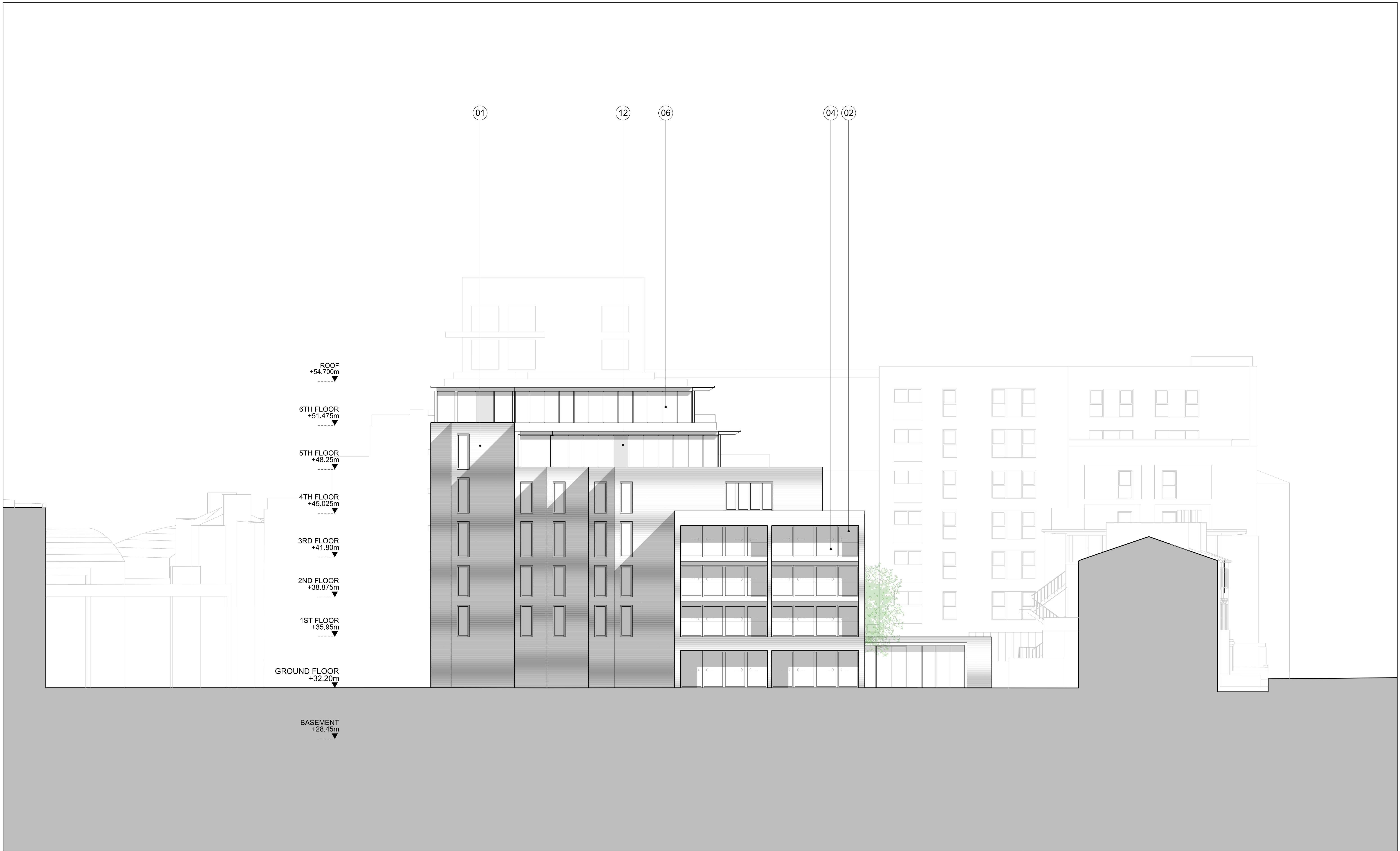
Allford Hall Monaghan Morris Limited accepts no responsibility or liability for:-

- any use of this drawing by parties other than the party for whom it was prepared or for purposes other than those for which it was prepared
- any alterations or additions to or discrepancies arising out of changes to the background information on which the drawings are based that was current at the time of issue, and which occur to that information after it has been issued by AHMM
- any loss or degradation of the information held in this drawing resulting from the translation from the original file format to any other file format or from the recipient's reading of it in any other programme or any version of the programme other than that which was used to prepare it
- the accuracy of survey information provided by others or for any costs, claims, proceedings and expenses arising out of reliance on such information
- any scaling from this drawing other than by the local planning authority solely for the purposes of the planning application to which it relates



LOCATION			
Oval Road			

ALLFORD HALL MONAGHAN MORRIS				
ARCHITECTS LTD MORELANDS, 5-23 OLD STREET LONDON EC1V 9HL TEL 020 7251 5261 FAX 020 7251 5123 WEB WWW.AHMM.CO.UK				
job title				
CENTRIC CLOSE				
drawing title / location				
PROPOSED ELEVATION - NORTH				
drawn by	checked	scale	status	
KP	JR	1:125@A1; 1:250@A3		
project	zone	source	classification	drawing no. revision
16041	AA		(SK)_030	



KEY

- 01 - Brickwork
- 02 - Metal framed glazed sliding doors
- 03 - Metal framed glazed doors
- 04 - Glazed balustrade
- 05 - Metal cladding balcony
- 06 - Metal framed glazed curtain walling
- 07 - Metal cladding infill
- 08 - Metal doors
- 09 - Metal louvres
- 10 - Metal clad roof profile
- 11 - Winter garden glazing
- 12 - Obscured glazed panel
- 13 - Metal railing

NOTE

When this drawing is issued in uncontrolled CAD format it will be accompanied by a PDF version and is issued to enable the recipient to prepare their own documents / models / drawings for which they are solely responsible. The recipient should report all drawing errors, omissions and discrepancies to the architect. All dimensions should be checked on site by the contractor and such dimensions shall be the contractor's responsibility.

Allford Hall Monaghan Morris Limited accepts no responsibility or liability for:-

- any use of this drawing by parties other than the party for whom it was prepared or for purposes other than those for which it was prepared
- any alterations or additions to or discrepancies arising out of changes to the background information on which the drawings are based that was current at the time of issue, and which occur to that information after it has been issued by AHMM
- any loss or degradation of the information held in this drawing resulting from the translation from the original file format to any other file format or from the recipient's reading of it in any other programme or any version of the programme other than that which was used to prepare it
- the accuracy of survey information provided by others or for any costs, claims, proceedings and expenses arising out of reliance on such information
- any scaling from this drawing other than by the local planning authority solely for the purposes of the planning application to which it relates

LOCATION

Oval Road

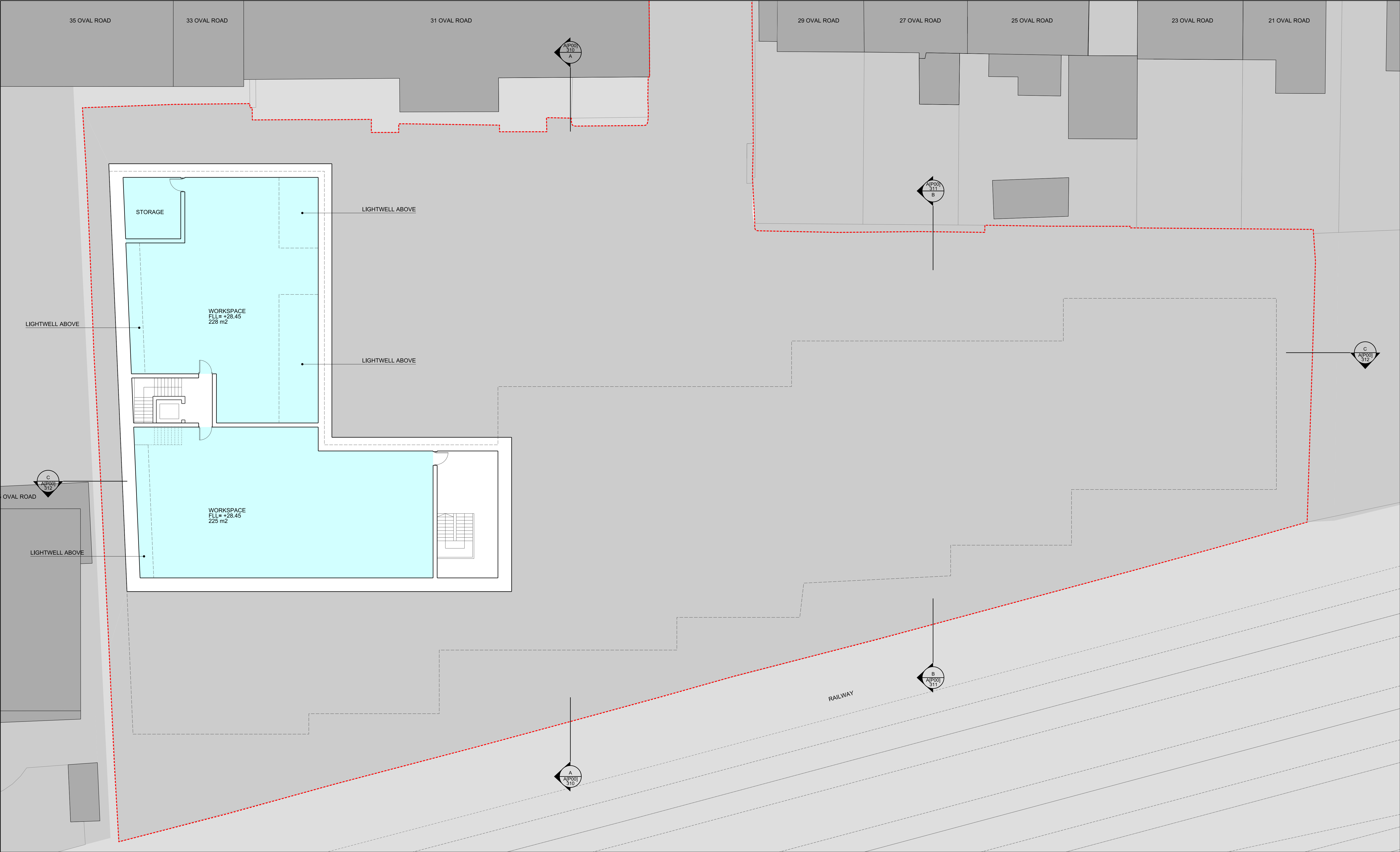
ALLFORD HALL MONAGHAN MORRIS

ARCHITECTS LTD
MORELANDS, 5-23 OLD STREET LONDON EC1V 9HL
TEL 020 7251 5261 FAX 020 7251 5123 WEB WWW.AHMM.CO.UK

job title
CENTRIC CLOSE

drawing title / location
PROPOSED SOUTH ELEVATION

drawn by KP	checked JR	scale 1:125@A1; 1:250@A3	status
project 16041	zone	source	classification (SK)_031



KEY

WORKSPACE

1B STUDIO

1B - 2 Persons

2B - 3 Persons

2B - 4 Persons

3B - 5-6 Persons

APPLICATION SITE BOUNDARY

SS SMOKE SHAFT

AOV AUTOMATIC OPENING VENT

PRIVATE AMENITY SPACE

WHEELCHAIR ADAPTABLE UNIT

0210

NOTE

When this drawing is issued in uncontrolled CAD format it will be accompanied by a PDF version and is issued to enable the recipient to prepare their own documents / models / drawings for which they are solely responsible. The recipient should report all drawing errors, omissions and discrepancies to the architect. All dimensions should be checked on site by the contractor and such dimensions shall be the contractor's responsibility.

Allford Hall Monaghan Morris Limited accepts no responsibility or liability for:-

- any use of this drawing by parties other than the party for whom it was prepared or for purposes other than those for which it was prepared
- any alterations or additions to or discrepancies arising out of changes to the background information on which the drawings are based that was current at the time of issue, and which occur to that information after it has been issued by AHMM
- any loss or degradation of the information held in this drawing resulting from the translation from the original file format to any other file format or from the recipient's reading of it in any other programme or any version of the programme other than that which was used to prepare it
- the accuracy of survey information provided by others or for any costs, claims, proceedings and expenses arising out of reliance on such information
- any scaling from this drawing other than by the local planning authority solely for the purposes of the planning application to which it relates

LOCATION

Oval Road

ALLFORD HALL MONAGHAN MORRIS

ARCHITECTS LTD
MORELANDS, 5-23 OLD STREET LONDON EC1V 9HL
TEL 020 7251 5261 FAX 020 7251 5123 WEB WWW.AHMM.CO.UK

job title

CENTRIC CLOSE

drawing title / location

PROPOSED BASEMENT PLAN

drawn by

checked

scale

status

SM

JR

1:125@A1; 1:250@A3

project

zone

source

classification

drawing no.

revision

16041

(SK)_004