

KEY

APPLICATION SITE BOUNDARY

0210

NOTE

When this drawing is issued in uncontrolled CAD format it will be accompanied by a PDF version and is issued to enable the recipient to prepare their own documents / models / drawings for which they are solely responsible. The recipient should report all drawing errors, omissions and discrepancies to the architect. All dimensions should be checked on site by the contractor and such dimensions shall be the contractor's responsibility.

Allford Hall Monaghan Morris Limited accepts no responsibility or liability for:-

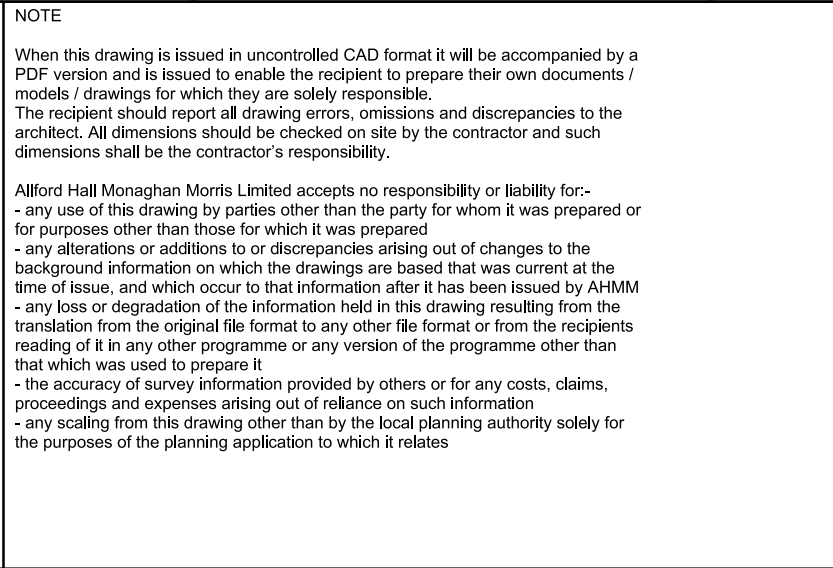
- any use of this drawing by parties other than the party for whom it was prepared or for purposes other than those for which it was prepared

- any alterations or additions to or discrepancies arising out of changes to the background information on which the drawings are based that was current at the time of issue, and which occur to that information after it has been issued by AHMM

- any loss or degradation of the information held in this drawing resulting from the translation from the original file format to any other file format or from the recipient's reading of it in any other programme or any version of the programme other than that which was used to prepare it

- the accuracy of survey information provided by others or for any costs, claims, proceedings and expenses arising out of reliance on such information

- any scaling from this drawing other than by the local planning authority solely for the purposes of the planning application to which it relates



ALLFORD HALL MONAGHAN MORRIS					
ARCHITECTS LTD MORELANDS, 5-23 OLD STREET LONDON EC1V 9HL TEL 020 7251 5261 FAX 020 7251 5123 WEB WWW.AHMM.CO.UK					
job title					
CENTRIC CLOSE					
drawing title / location					
EXISTING GROUND FLOOR PLAN					
drawn by	checked	scale	status		
SM	JR	1:125@A1; 1:250@A3	FOR APPROVAL		
project	zone	source	classification	drawing no.	revision
16041			A (P00)_002	P01	



KEY

APPLICATION SITE BOUNDARY

0210

NOTE

When this drawing is issued in uncontrolled CAD format it will be accompanied by a PDF version and is issued to enable the recipient to prepare their own documents / models / drawings for which they are solely responsible. The recipient should report all drawing errors, omissions and discrepancies to the architect. All dimensions should be checked on site by the contractor and such dimensions shall be the contractor's responsibility.

Allford Hall Monaghan Morris Limited accepts no responsibility or liability for:-

- any use of this drawing by parties other than the party for whom it was prepared or for purposes other than those for which it was prepared
- any alterations or additions to or discrepancies arising out of changes to the background information on which the drawings are based that was current at the time of issue, and which occur to that information after it has been issued by AHMM
- any loss or degradation of the information held in this drawing resulting from the translation from the original file format to any other file format or from the recipient's reading of it in any other programme or any version of the programme other than that which was used to prepare it
- the accuracy of survey information provided by others or for any costs, claims, proceedings and expenses arising out of reliance on such information
- any scaling from this drawing other than by the local planning authority solely for the purposes of the planning application to which it relates

LOCATION

Oval Road

ALLFORD HALL MONAGHAN MORRIS

ARCHITECTS LTD
MORELANDS, 5-23 OLD STREET LONDON EC1V 9HL
TEL 020 7251 5261 FAX 020 7251 5123 WEB WWW.AHMM.CO.UK

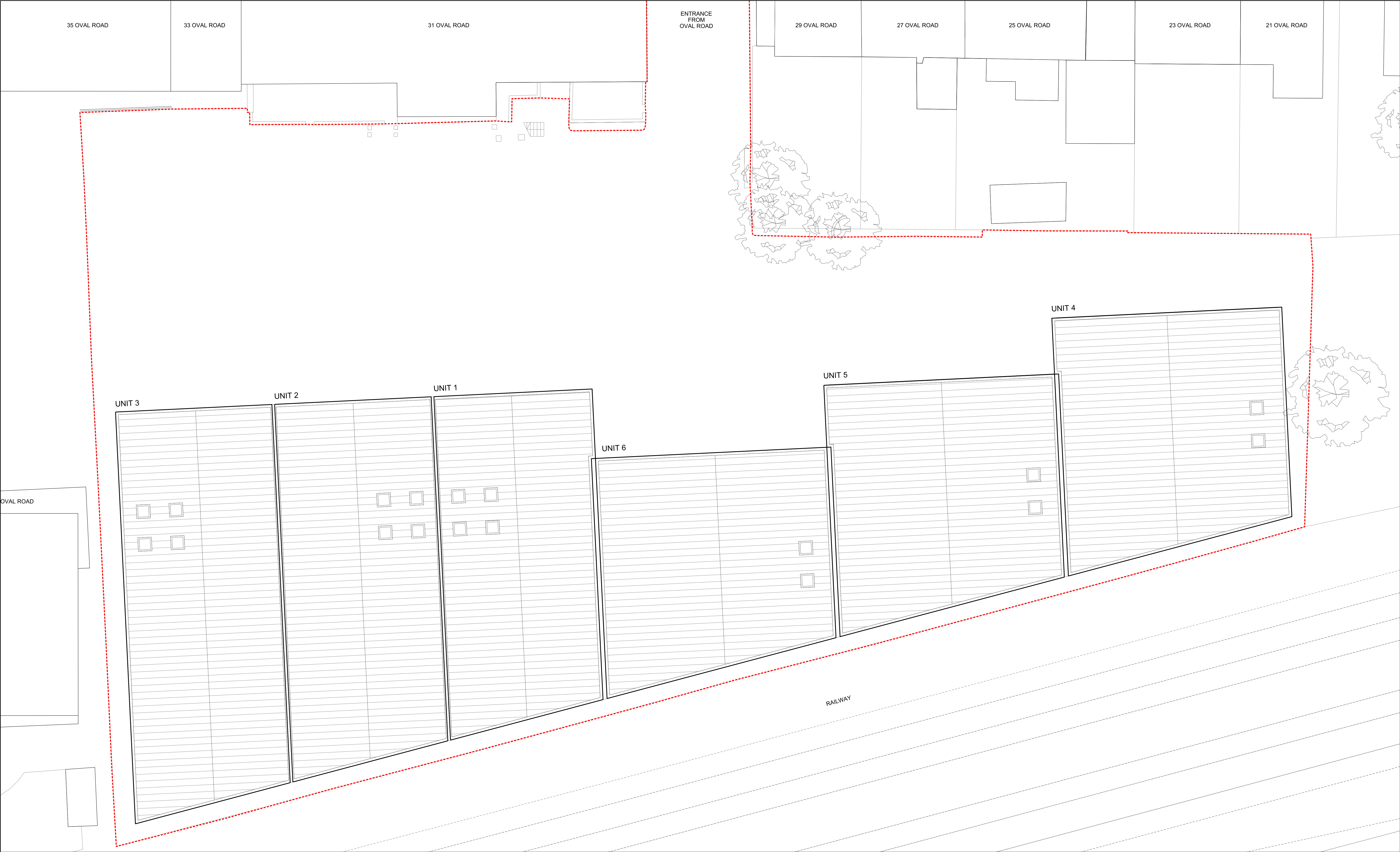
job title

CENTRIC CLOSE

drawing title / location

EXISTING FIRST FLOOR PLAN

drawn by	checked	scale	status
SM	JR	1:125@A1; 1:250@A3	FOR APPROVAL
project	zone	source	classification
16041		A	(P00)_003
			P01



KEY

APPLICATION SITE BOUNDARY

0210

NOTE

When this drawing is issued in uncontrolled CAD format it will be accompanied by a PDF version and is issued to enable the recipient to prepare their own documents / models / drawings for which they are solely responsible. The recipient should report all drawing errors, omissions and discrepancies to the architect. All dimensions should be checked on site by the contractor and such dimensions shall be the contractor's responsibility.

Allford Hall Monaghan Morris Limited accepts no responsibility or liability for:-

- any use of this drawing by parties other than the party for whom it was prepared or for purposes other than those for which it was prepared
- any alterations or additions to or discrepancies arising out of changes to the background information on which the drawings are based that was current at the time of issue, and which occur to that information after it has been issued by AHMM
- any loss or degradation of the information held in this drawing resulting from the translation from the original file format to any other file format or from the recipient's reading of it in any other programme or any version of the programme other than that which was used to prepare it
- the accuracy of survey information provided by others or for any costs, claims, proceedings and expenses arising out of reliance on such information
- any scaling from this drawing other than by the local planning authority solely for the purposes of the planning application to which it relates

LOCATION

Oval Road

ALLFORD HALL MONAGHAN MORRIS

ARCHITECTS LTD
MORELANDS, 5-23 OLD STREET LONDON EC1V 9HL
TEL 020 7251 5261 FAX 020 7251 5123 WEB WWW.AHMM.CO.UK

job title

CENTRIC CLOSE

drawing title / location

EXISTING ROOF PLAN

drawn by

checked

scale

status

SM

JR

1:125@A1; 1:250@A3

FOR APPROVAL

project

zone

source

classification

drawing no.

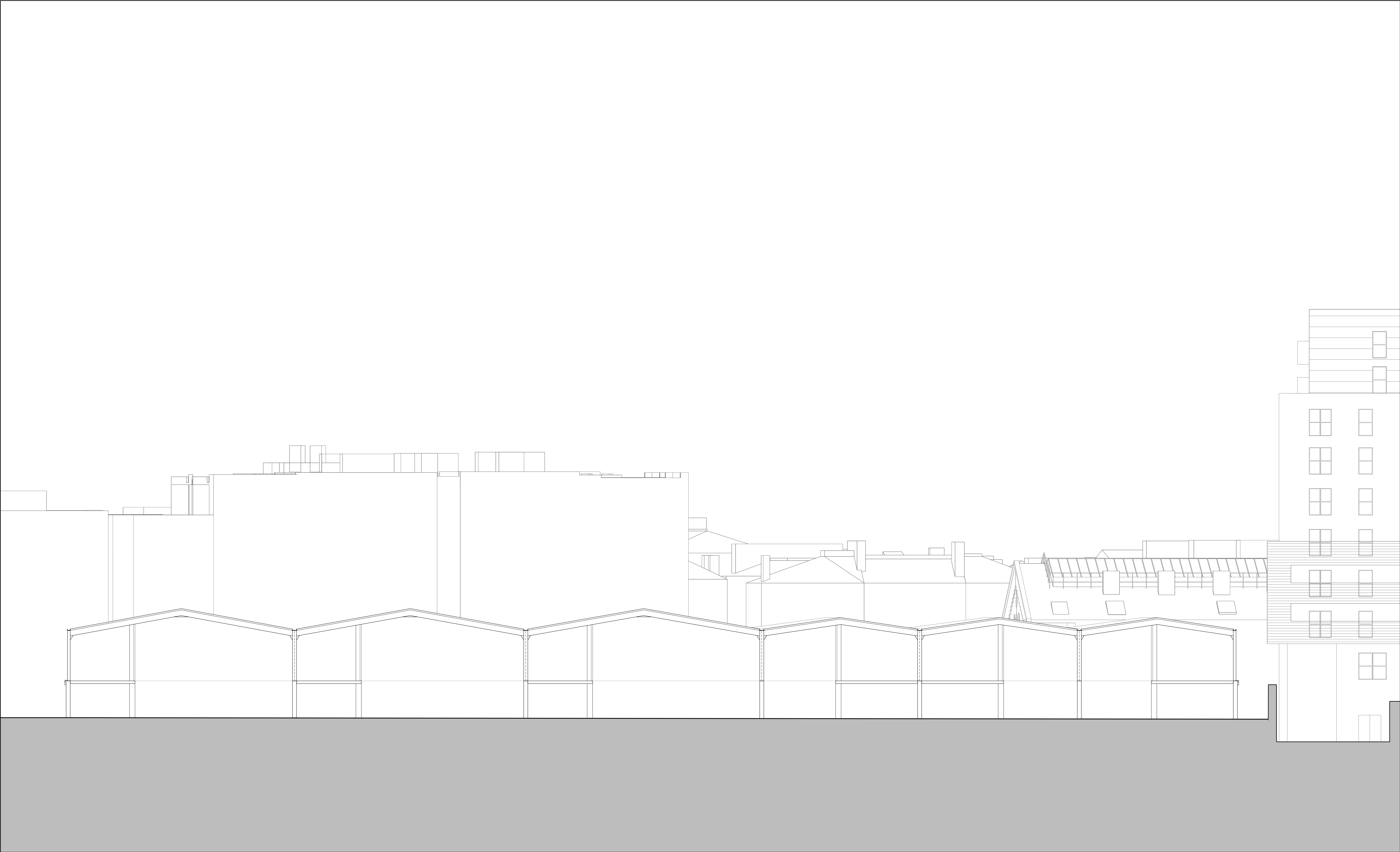
revision

16041

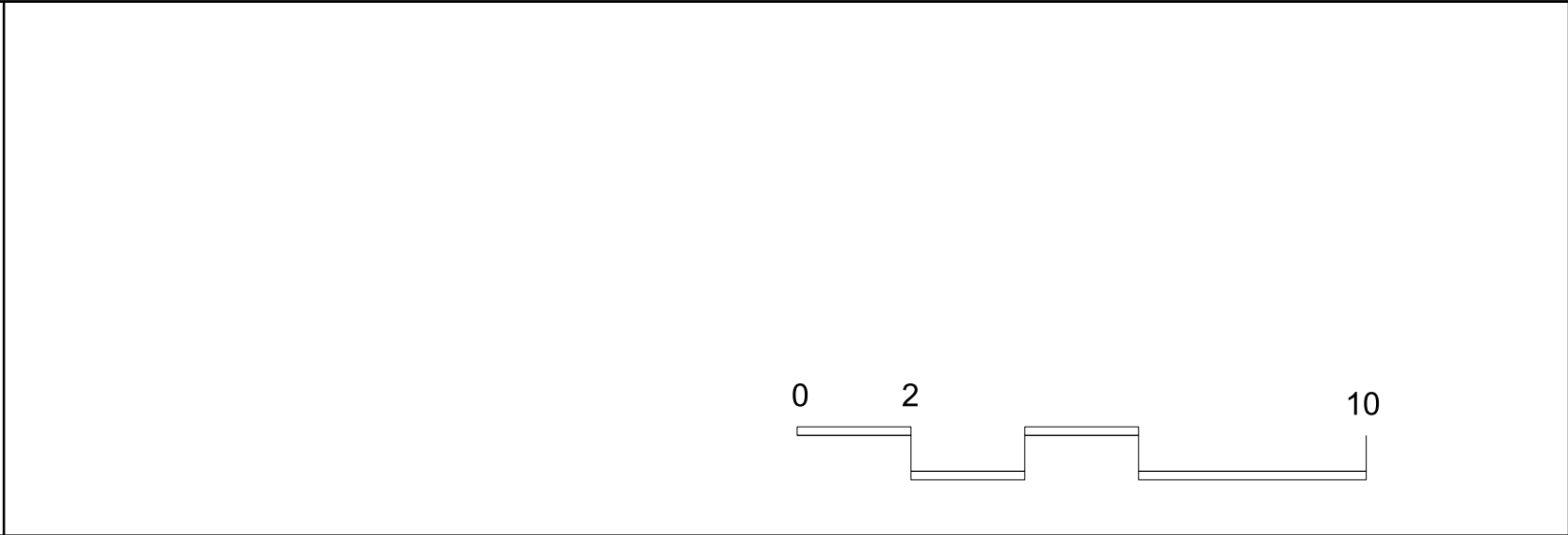
A

(P00)_004

P01



KEY



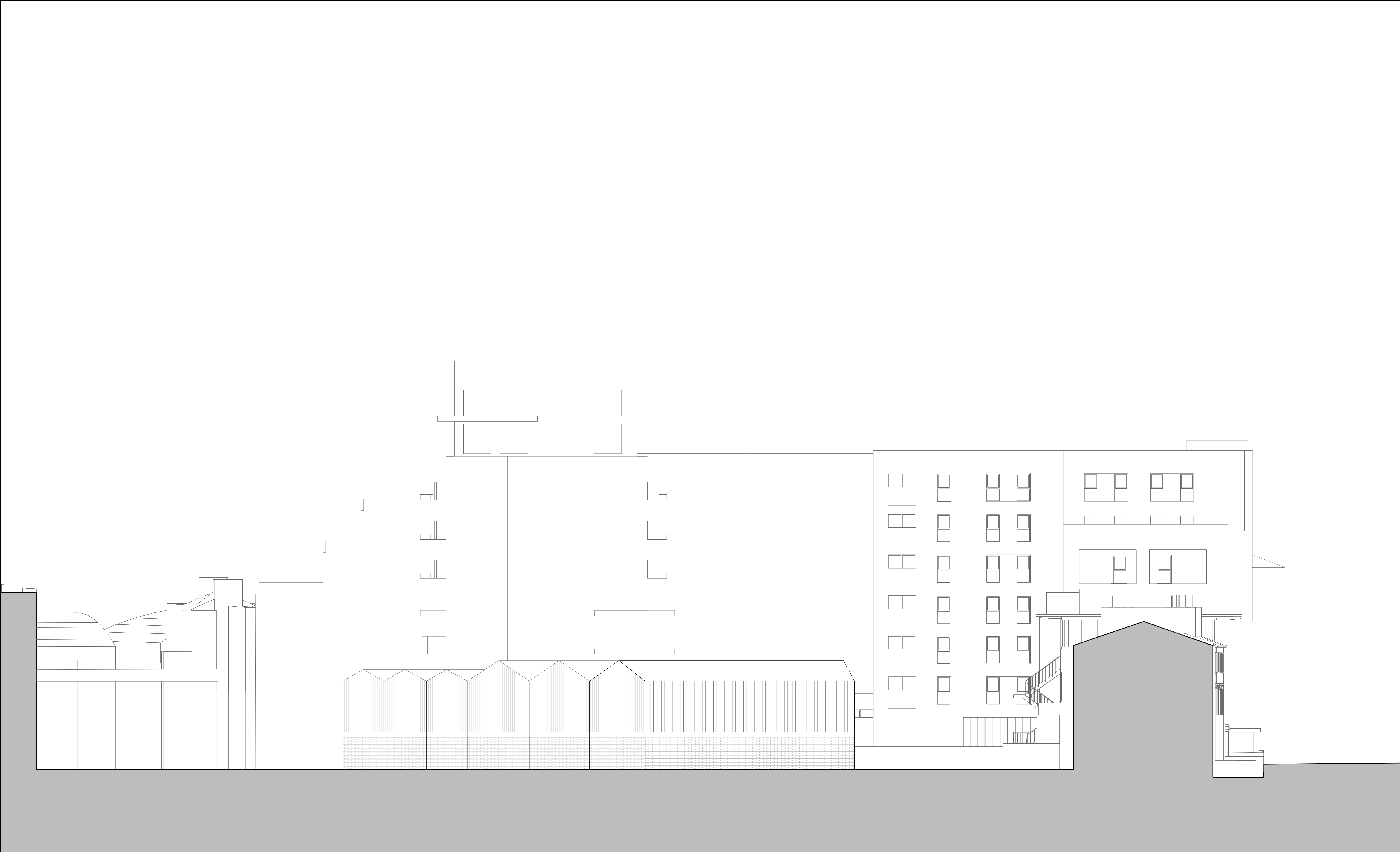
NOTE

When this drawing is issued in uncontrolled CAD format it will be accompanied by a PDF version and is issued to enable the recipient to prepare their own documents / models / drawings for which they are solely responsible.
The recipient should report all drawing errors, omissions and discrepancies to the architect. All dimensions should be checked on site by the contractor and such dimensions shall be the contractor's responsibility.

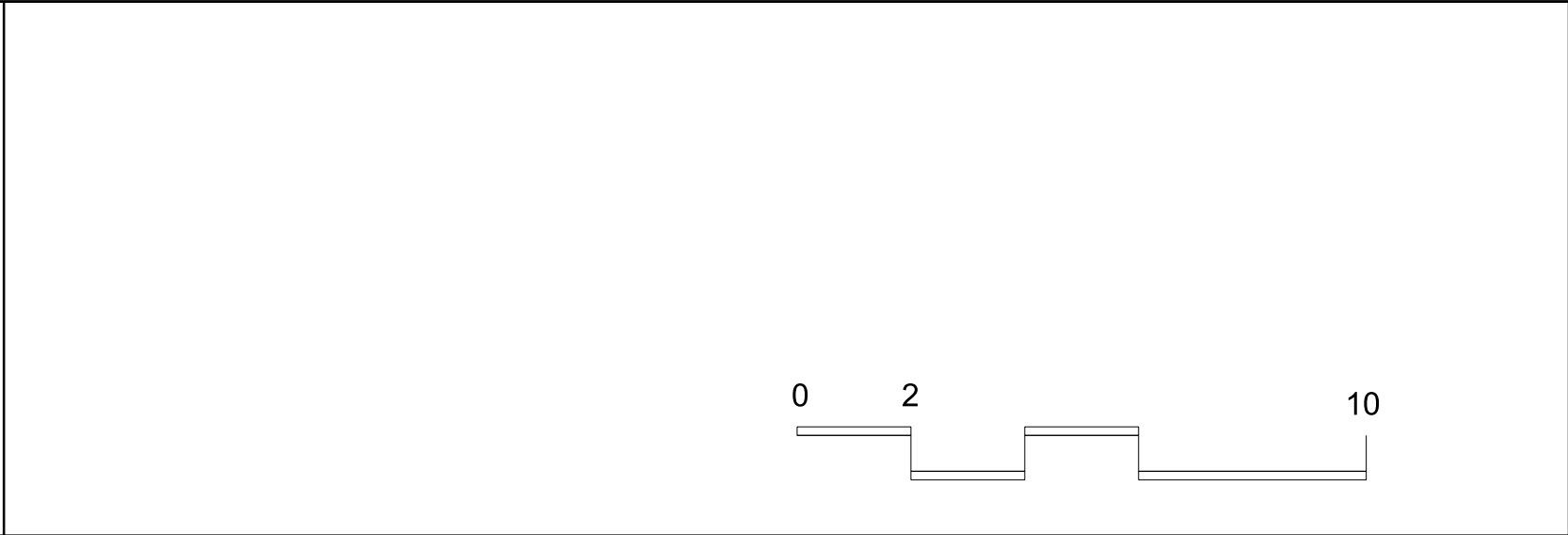
Alford Hall Monaghan Morris Limited accepts no responsibility or liability for:-
- any use of this drawing by parties other than the party for whom it was prepared or for purposes other than those for which it was prepared
- any alterations or additions to or discrepancies arising out of changes to the background information on which the drawings are based that was current at the time of issue, and which occur to that information after it has been issued by AHMM
- any loss or degradation of the information held in this drawing resulting from the translation from the original file format to any other file format or from the recipient's reading of it in any other programme or any version of the programme other than that which was used to prepare it
- the accuracy of survey information provided by others or for any costs, claims, proceedings and expenses arising out of reliance on such information
- any scaling from this drawing other than by the local planning authority solely for the purposes of the planning application to which it relates



ALLFORD HALL MONAGHAN MORRIS					
ARCHITECTS LTD MORELANDS, 5-23 OLD STREET LONDON EC1V 9HL TEL 020 7251 5261 FAX 020 7251 5123 WEB WWW.AHMM.CO.UK					
job title					
CENTRIC CLOSE					
drawing title / location					
EXISTING SECTION					
drawn by	checked	scale	status		
SM	JR	1:125@A1; 1:250@A3	FOR APPROVAL		
project	zone	source	classification	drawing no.	revision
16041			A (P00)_005	P01	



KEY



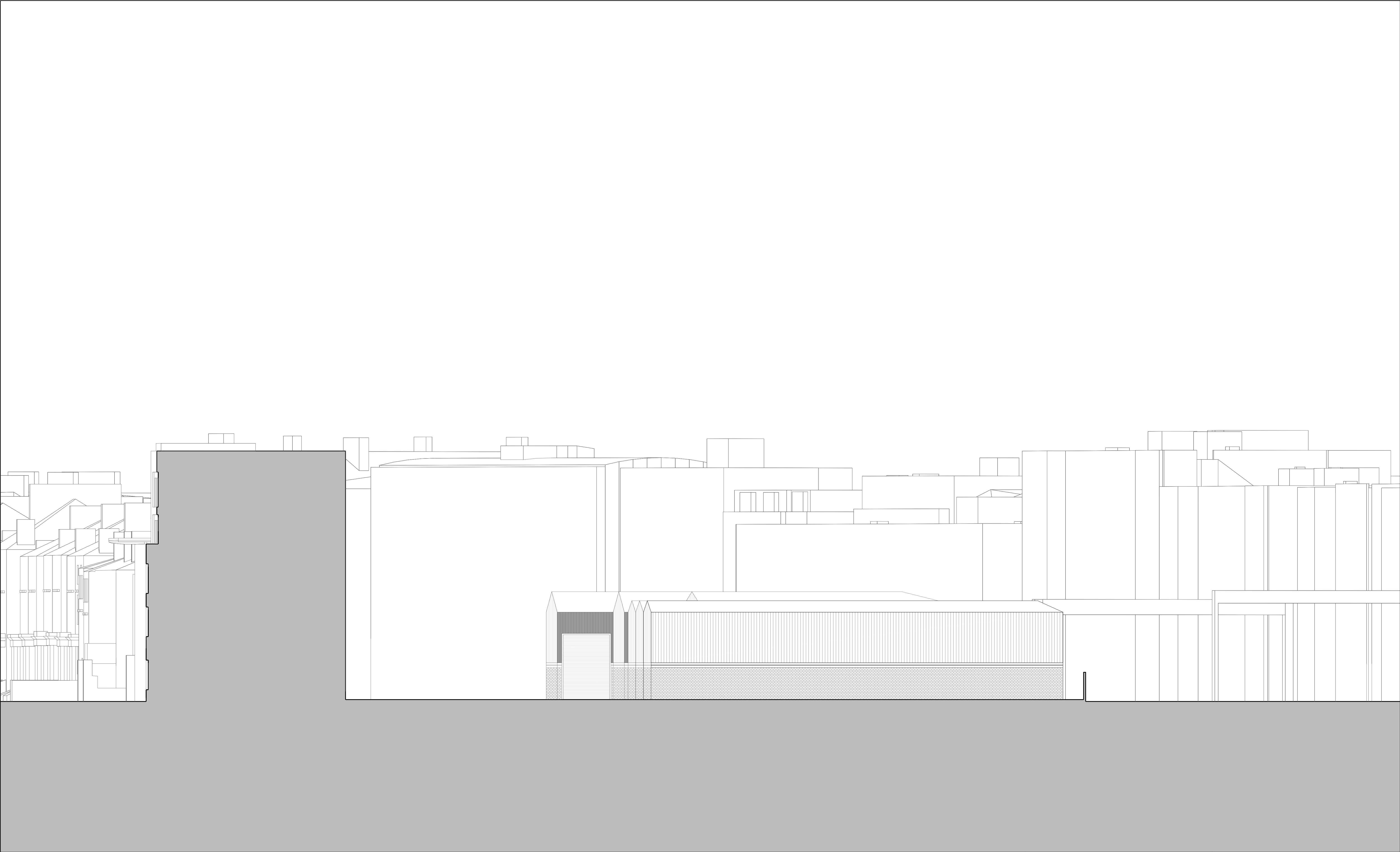
NOTE

When this drawing is issued in uncontrolled CAD format it will be accompanied by a PDF version and is issued to enable the recipient to prepare their own documents / models / drawings for which they are solely responsible.
The recipient should report all drawing errors, omissions and discrepancies to the architect. All dimensions should be checked on site by the contractor and such dimensions shall be the contractor's responsibility.

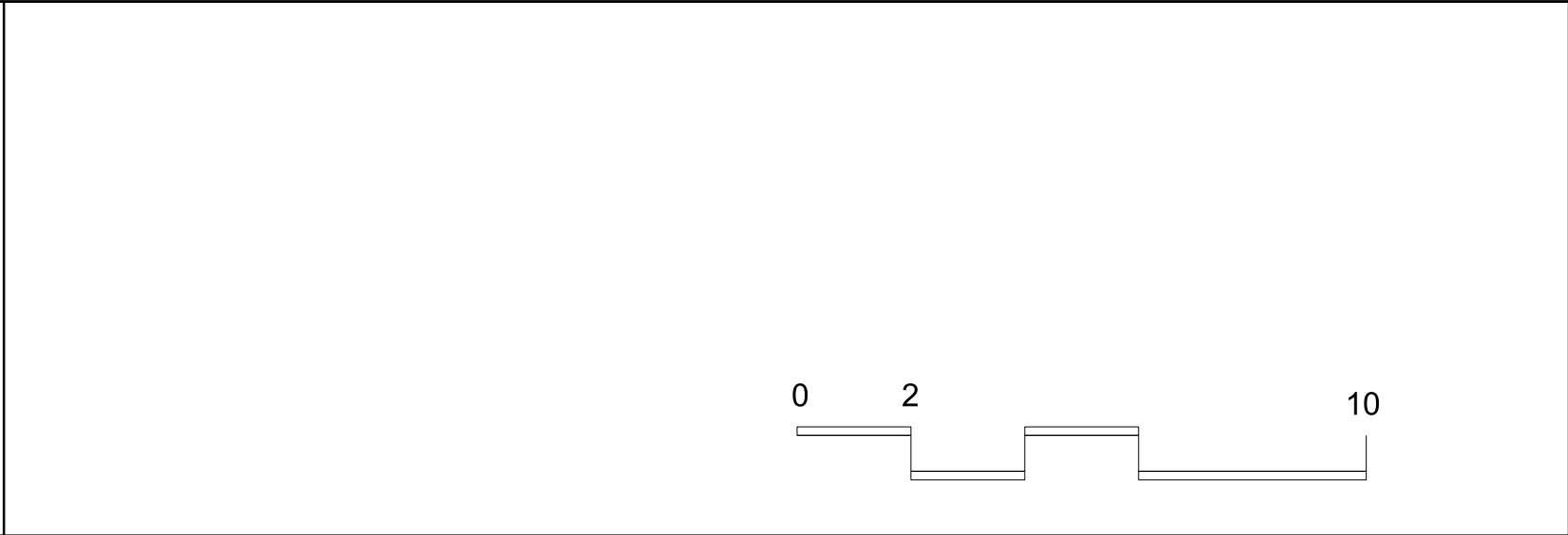
Allford Hall Monaghan Morris Limited accepts no responsibility or liability for:-
- any use of this drawing by parties other than the party for whom it was prepared or for purposes other than those for which it was prepared
- any alterations or additions to or discrepancies arising out of changes to the background information on which the drawings are based that was current at the time of issue, and which occur to that information after it has been issued by AHMM
- any loss or degradation of the information held in this drawing resulting from the translation from the original file format to any other file format or from the recipient's reading of it in any other programme or any version of the programme other than that which was used to prepare it
- the accuracy of survey information provided by others or for any costs, claims, proceedings and expenses arising out of reliance on such information
- any scaling from this drawing other than by the local planning authority solely for the purposes of the planning application to which it relates



ALLFORD HALL MONAGHAN MORRIS					
ARCHITECTS LTD MORELANDS, 5-23 OLD STREET LONDON EC1V 9HL TEL 020 7251 5261 FAX 020 7251 5123 WEB WWW.AHMM.CO.UK					
job title					
CENTRIC CLOSE					
drawing title / location					
EXISTING SOUTH ELEVATION					
drawn by	checked	scale	status		
SM	JR	1:125@A1; 1:250@A3	FOR APPROVAL		
project	zone	source	classification	drawing no.	revision
16041		A	(P00)_006	P01	



KEY

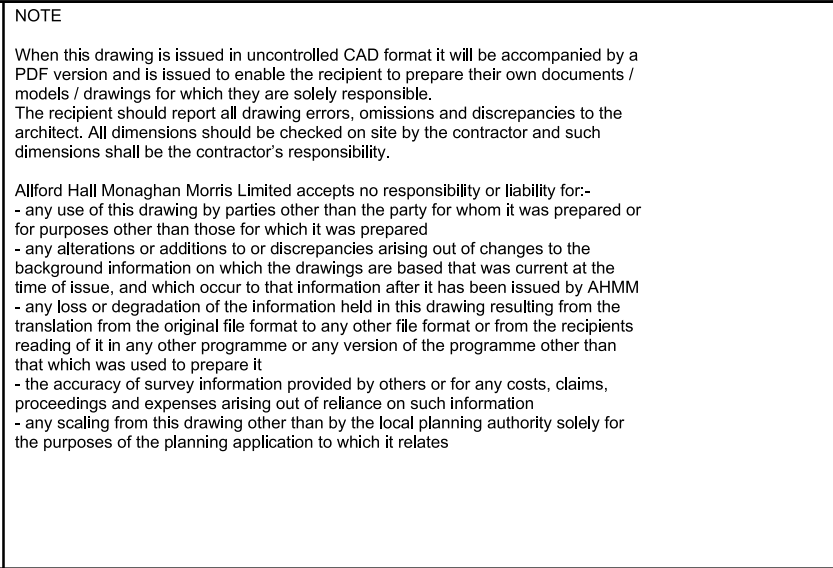


NOTE

When this drawing is issued in uncontrolled CAD format it will be accompanied by a PDF version and is issued to enable the recipient to prepare their own documents / models / drawings for which they are solely responsible. The recipient should report all drawing errors, omissions and discrepancies to the architect. All dimensions should be checked on site by the contractor and such dimensions shall be the contractor's responsibility.

Alford Hall Monaghan Morris Limited accepts no responsibility or liability for:-

- any use of this drawing by parties other than the party for whom it was prepared or for purposes other than those for which it was prepared
- any alterations or additions to or discrepancies arising out of changes to the background information on which the drawings are based that was current at the time of issue, and which occur to that information after it has been issued by AHMM
- any loss or degradation of the information held in this drawing resulting from the translation from the original file format to any other file format or from the recipient's reading of it in any other programme or any version of the programme other than that which was used to prepare it
- the accuracy of survey information provided by others or for any costs, claims, proceedings and expenses arising out of reliance on such information
- any scaling from this drawing other than by the local planning authority solely for the purposes of the planning application to which it relates



drawing title / location			
CENTRIC CLOSE			
EXISTING NORTH ELEVATION			
drawn by	checked	scale	status
SM	JR	1:125@A1; 1:250@A3	FOR APPROVAL
project	zone	source	classification
16041		A	(P00)_007
			P01

ALFORD HALL MONAGHAN MORRIS
ARCHITECTS LTD
MORELANDS, 5-23 OLD STREET LONDON EC1V 9HL
TEL 020 7251 5261 FAX 020 7251 5123 WEB WWW.AHMM.CO.UK

job title

CENTRIC CLOSE

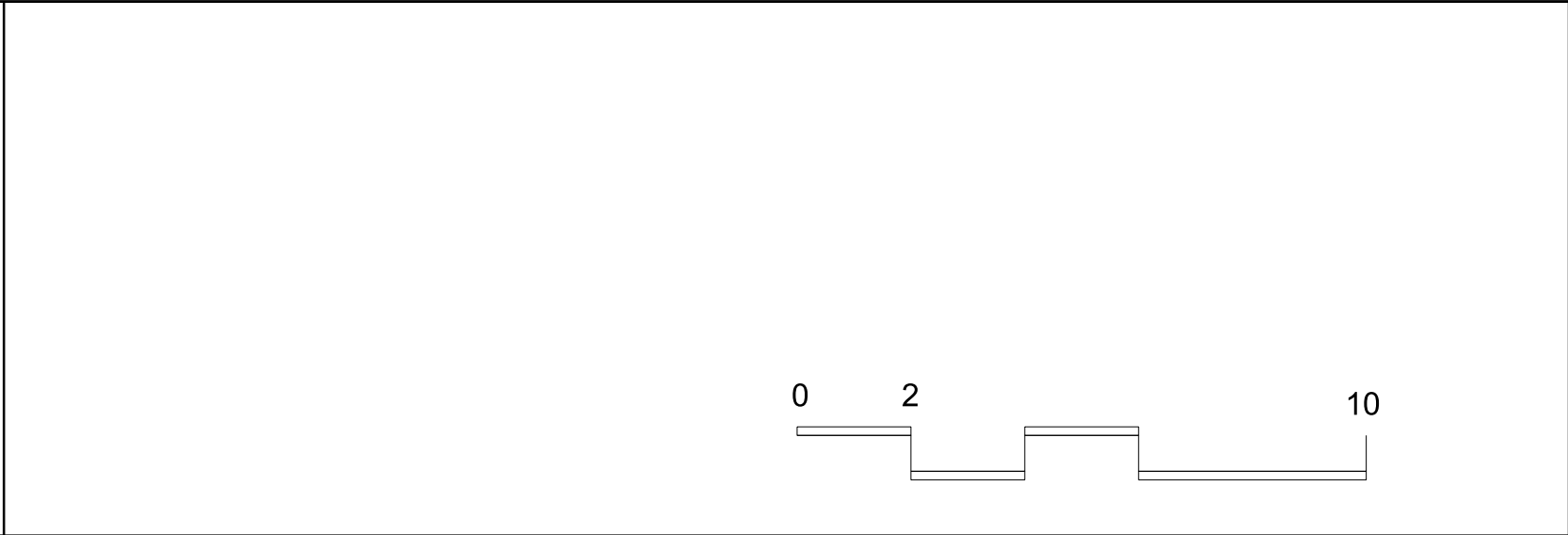
drawing title / location

EXISTING NORTH ELEVATION

drawn by	checked	scale	status
SM	JR	1:125@A1; 1:250@A3	FOR APPROVAL
project	zone	source	classification
16041		A	(P00)_007
			P01



KEY



NOTE

When this drawing is issued in uncontrolled CAD format it will be accompanied by a PDF version and is issued to enable the recipient to prepare their own documents / models / drawings for which they are solely responsible. The recipient should report all drawing errors, omissions and discrepancies to the architect. All dimensions should be checked on site by the contractor and such dimensions shall be the contractor's responsibility.

Allford Hall Monaghan Morris Limited accepts no responsibility or liability for:-

- any use of this drawing by parties other than the party for whom it was prepared or for purposes other than those for which it was prepared
- any alterations or additions to or discrepancies arising out of changes to the background information on which the drawings are based that was current at the time of issue, and which occur to that information after it has been issued by AHMM
- any loss or degradation of the information held in this drawing resulting from the translation from the original file format to any other file format or from the recipient's reading of it in any other programme or any version of the programme other than that which was used to prepare it
- the accuracy of survey information provided by others or for any costs, claims, proceedings and expenses arising out of reliance on such information
- any scaling from this drawing other than by the local planning authority solely for the purposes of the planning application to which it relates

LOCATION

ALLFORD HALL MONAGHAN MORRIS

ARCHITECTS LTD
MORELANDS, 5-23 OLD STREET LONDON EC1V 9HL
TEL 020 7251 5261 FAX 020 7251 5123 WEB WWW.AHMM.CO.UK

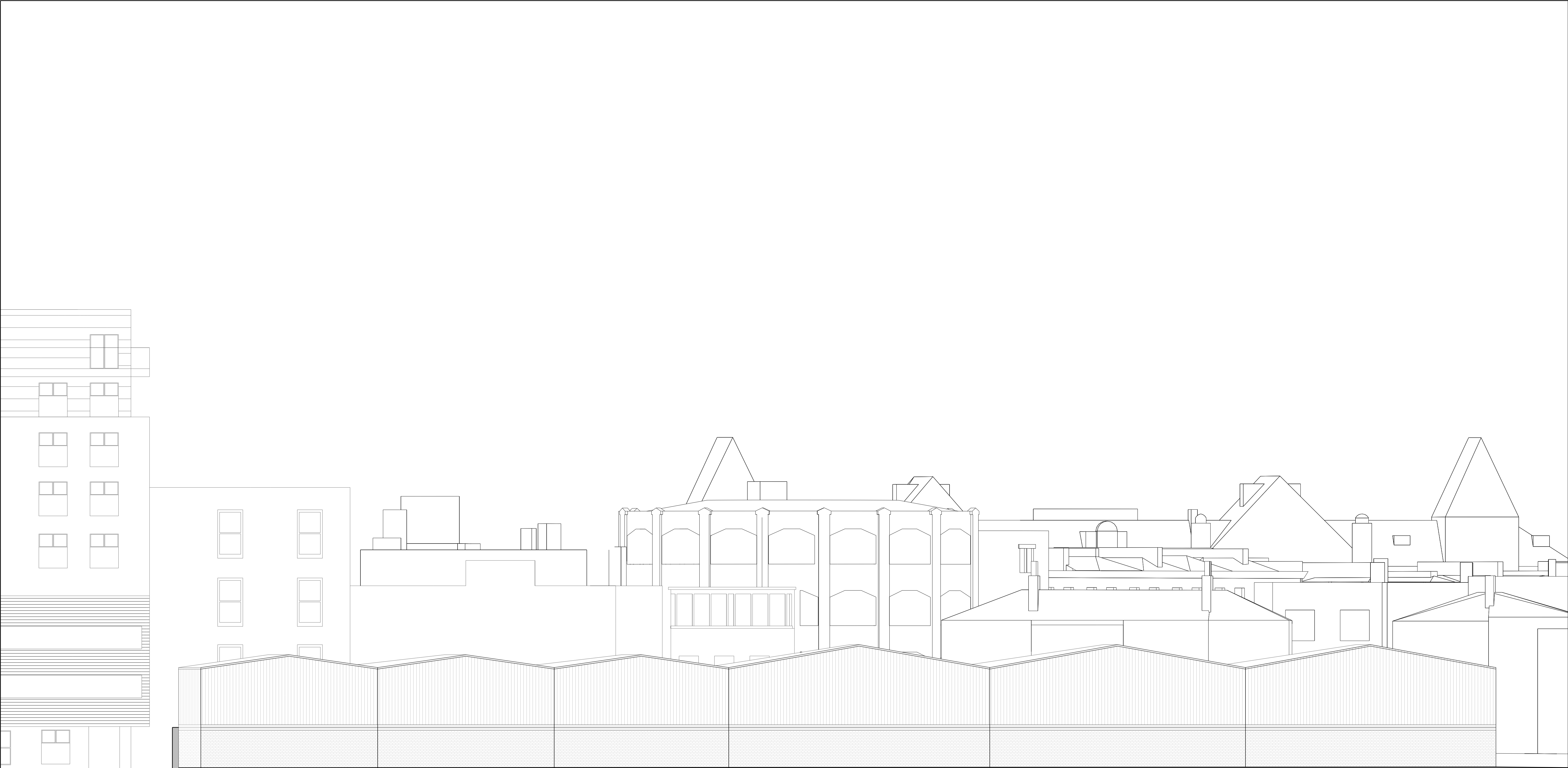
job title

CENTRIC CLOSE

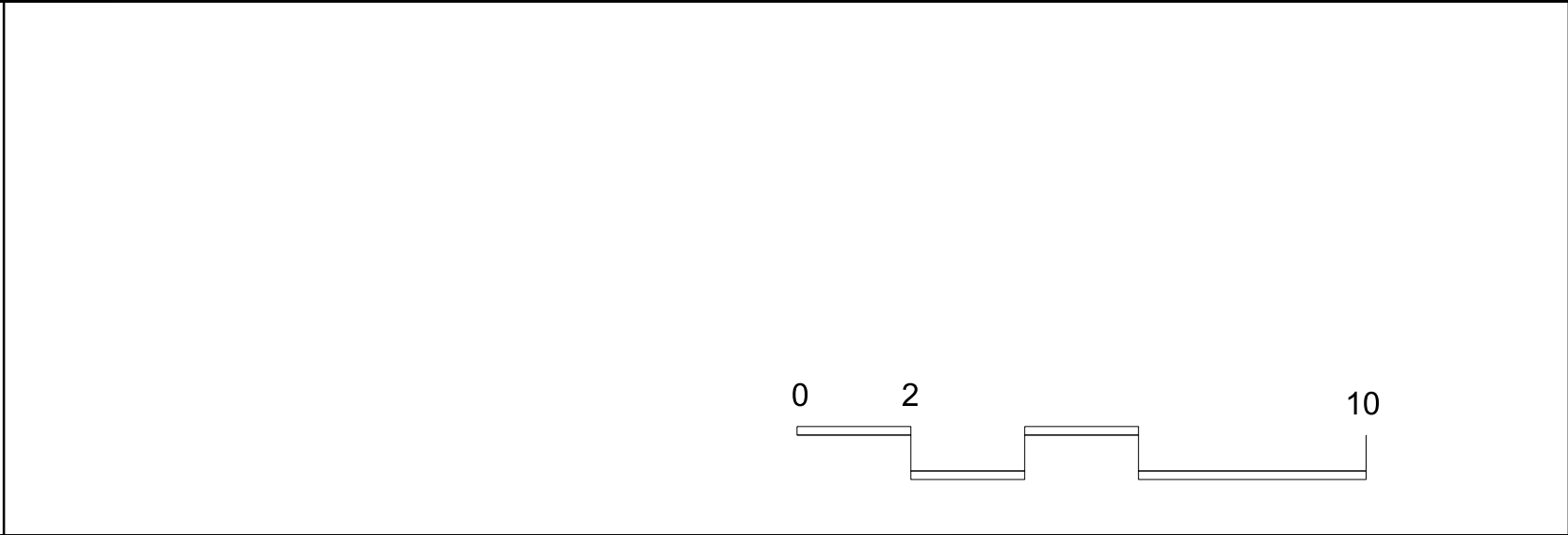
drawing title / location

EXISTING EAST ELEVATION

drawn by	checked	scale	status
SM	JR	1:125@A1; 1:250@A3	FOR APPROVAL
project	zone	source	classification
16041		A	(P00)_008
			P01



KEY

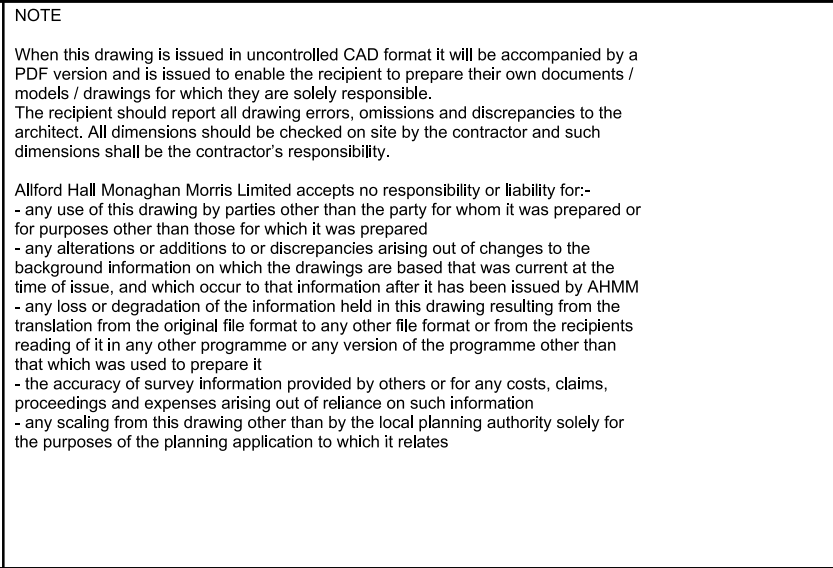


NOTE

When this drawing is issued in uncontrolled CAD format it will be accompanied by a PDF version and is issued to enable the recipient to prepare their own documents / models / drawings for which they are solely responsible. The recipient should report all drawing errors, omissions and discrepancies to the architect. All dimensions should be checked on site by the contractor and such dimensions shall be the contractor's responsibility.

Allford Hall Monaghan Morris Limited accepts no responsibility or liability for:-

- any use of this drawing by parties other than the party for whom it was prepared or for purposes other than those for which it was prepared
- any alterations or additions to or discrepancies arising out of changes to the background information on which the drawings are based that was current at the time of issue, and which occur to that information after it has been issued by AHMM
- any loss or degradation of the information held in this drawing resulting from the translation from the original file format to any other file format or from the recipient's reading of it in any other programme or any version of the programme other than that which was used to prepare it
- the accuracy of survey information provided by others or for any costs, claims, proceedings and expenses arising out of reliance on such information
- any scaling from this drawing other than by the local planning authority solely for the purposes of the planning application to which it relates



project	zone	source	classification	drawing no.	revision
16041		A	(P00)_009	P01	

ALLFORD HALL MONAGHAN MORRIS
ARCHITECTS LTD
MORELANDS, 5-23 OLD STREET LONDON EC1V 9HL
TEL 020 7251 5261 FAX 020 7251 5123 WEB WWW.AHMM.CO.UK


job title
CENTRIC CLOSE

drawing title / location
EXISTING WEST ELEVATION


drawn by SM	checked JR	scale 1:125@A1; 1:250@A3	status FOR APPROVAL
-----------------------	----------------------	------------------------------------	-------------------------------



KEY

 Demolition

0210




NOTE

When this drawing is issued in uncontrolled CAD format it will be accompanied by a PDF version and is issued to enable the recipient to prepare their own documents / models / drawings for which they are solely responsible. The recipient should report all drawing errors, omissions and discrepancies to the architect. All dimensions should be checked on site by the contractor and such dimensions shall be the contractor's responsibility.

Alford Hall Monaghan Morris Limited accepts no responsibility or liability for:-

- any use of this drawing by parties other than the party for whom it was prepared or for purposes other than those for which it was prepared
- any alterations or additions to or discrepancies arising out of changes to the background information on which the drawings are based that was current at the time of issue, and which occur to that information after it has been issued by AHMM
- any loss or degradation of the information held in this drawing resulting from the translation from the original file format to any other file format or from the recipient's reading of it in any other programme or any version of the programme other than that which was used to prepare it
- the accuracy of survey information provided by others or for any costs, claims, proceedings and expenses arising out of reliance on such information
- any scaling from this drawing other than by the local planning authority solely for the purposes of the planning application to which it relates

LOCATION



ALFORD HALL MONAGHAN MORRIS
ARCHITECTS LTD
MORELANDS, 5-23 OLD STREET LONDON EC1V 9HL
TEL 020 7251 5261 FAX 020 7251 5123 WEB WWW.AHMM.CO.UK

job title
CENTRIC CLOSE

drawing title / location
DEMOLITION PLAN

drawn by -	checked -	scale 1:125@A1; 1:250@A3	status FOR APPROVAL
project 16041	zone	source A	classification (P00)_010
drawing no.		revision P01	