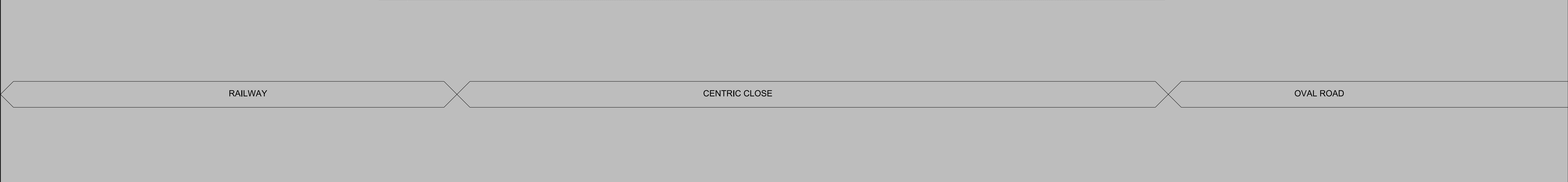
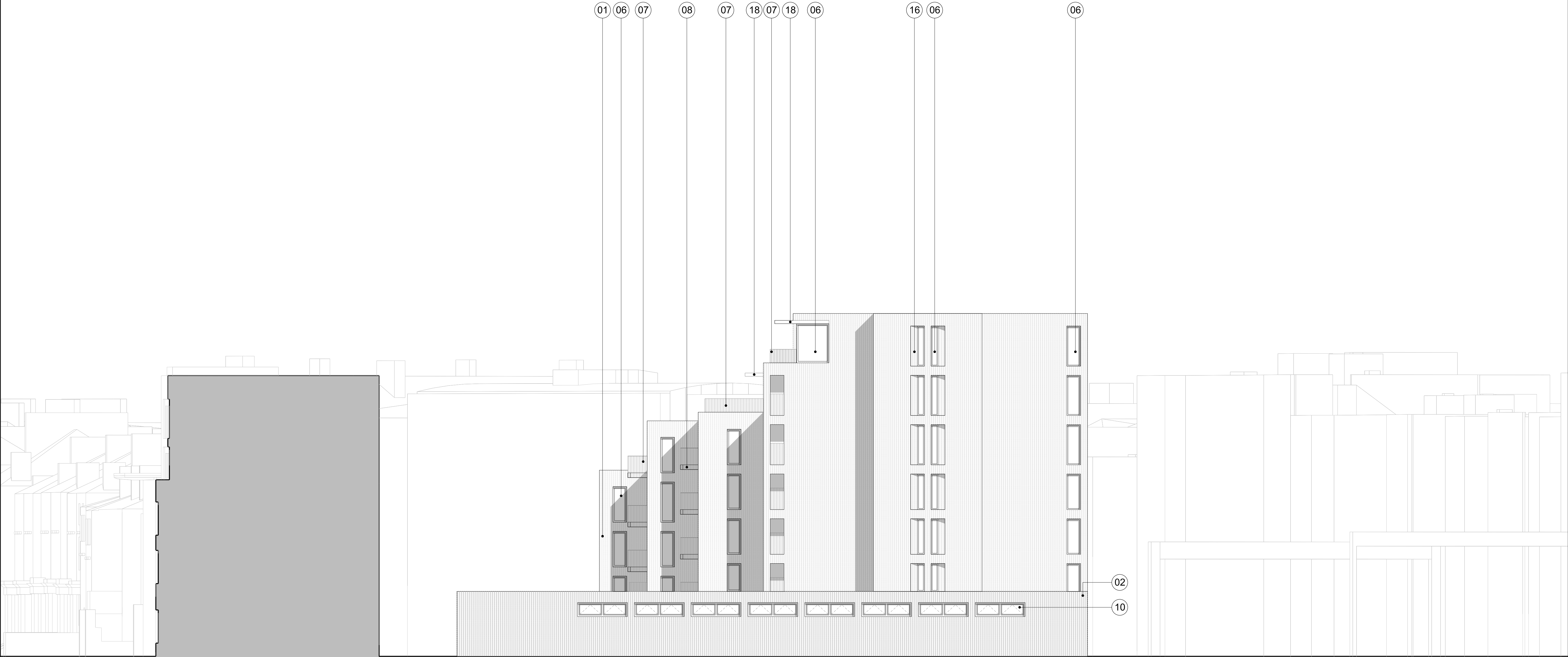


<div>01 - Facing brickwork type 01</div> <div>02 - Patterned facing brickwork type 02</div> <div>03 - Metal framed glazed sliding doors</div> <div>04 - Metal framed glazed doors</div> <div>05 - Metal framed window with opening lights</div> <div>06 - Metal framed fixed window</div> <div>07 - Metal balustrade</div> <div>08 - Metal balcony fascia / soffit</div> <div>09 - Metal framed glazed curtain walling</div> <div>10 - Metal framed opening lights</div> <div>11 - 10mm wide x 40mm deep metal fins on metal backing panel</div> <div>12 - Metal doors</div> <div>13 - Metal louvres</div> <div>14 - Metal projecting roof profile</div> <div>15 - Pre-cast concrete plinth / cornice</div> <div>16 - Chamfered brickwork panel</div> <div>17 - Perforated brickwork screen</div> <div>18 - Projecting metal canopy</div> <div>19 - Metal louvred doors</div> <div>20 - Glazed external screen</div> <div>21 - Obscured glazing</div> <div>22 - Brickwork shadow gap</div> <div>23 - Brickwork soffit</div> <div>24 - Metal door as metal fins on metal backing panel</div>		<div>NOTE</div> <div>When this drawing is issued in uncontrolled CAD format it will be accompanied by a PDF version and is issued to enable the recipient to prepare their own documents / models / drawings for which they are solely responsible. The recipient should report all drawing errors, omissions and discrepancies to the architect. All dimensions should be checked on site by the contractor and such dimensions shall be the contractor's responsibility.</div> <div>Allford Hall Monaghan Morris Limited accepts no responsibility or liability for:-</div> <div>- any use of this drawing by parties other than the party for whom it was prepared or for purposes other than those for which it was prepared</div> <div>- any alterations or additions to or discrepancies arising out of changes to the background information on which the drawings are based that was current at the time of issue, and which occur to that information after it has been issued by AHMM</div> <div>- any loss or degradation of the information held in this drawing resulting from the translation from the original file format to any other file format or from the recipient's reading of it in any other programme or any version of the programme other than that which was used to prepare it</div> <div>- the accuracy of survey information provided by others or for any costs, claims, proceedings and expenses arising out of reliance on such information</div> <div>- any scaling from this drawing other than by the local planning authority solely for the purposes of the planning application to which it relates</div> <div>0210</div> <div></div>		<div>LOCATION</div> <div></div>		<div>ALLFORD HALL MONAGHAN MORRIS</div> <div>ARCHITECTS Ltd</div> <div>MORELANDS, 5-23 OLD STREET LONDON EC1V 9HL</div> <div>TEL 020 7251 5261 FAX 020 7251 5123 WEB WWW.AHMM.CO.UK</div> <div>job title</div> <div>CENTRIC CLOSE</div> <div>drawing title / location</div> <div>PROPOSED SOUTH ELEVATION</div> <div><div>drawn by</div><div>checked</div><div>scale</div><div>status</div></div> <div><div>KP</div><div>JR</div><div>1:125@A1; 1:250@A3</div><div>FOR APPROVAL</div></div> <div><div>project</div><div>zone</div><div>source</div><div>classification</div><div>drawing no.</div><div>revision</div></div> <div><div>16041</div><div></div><div>A</div><div>(P00)_220</div><div>P01</div></div>			
---	--	--	--	---------------------------------	--	--	--	--	--



<div>01 - Facing brickwork type 01</div> <div>02 - Patterned facing brickwork type 02</div> <div>03 - Metal framed glazed sliding doors</div> <div>04 - Metal framed glazed doors</div> <div>05 - Metal framed window with opening lights</div> <div>06 - Metal framed fixed window</div> <div>07 - Metal balustrade</div> <div>08 - Metal balcony fascia / soffit</div> <div>09 - Metal framed glazed curtain walling</div> <div>10 - Metal framed opening lights</div> <div>11 - 10mm wide x 40mm deep metal fins on metal backing panel</div> <div>12 - Metal doors</div> <div>13 - Metal louvres</div> <div>14 - Metal projecting roof profile</div> <div>15 - Pre-cast concrete plinth / cornice</div> <div>16 - Chamfered brickwork panel</div> <div>17 - Perforated brickwork screen with fixed glazing behind</div> <div>18 - Projecting metal canopy</div> <div>19 - Metal louvred doors</div> <div>20 - Glazed external screen</div> <div>21 - Obscured glazing</div> <div>22 - Brickwork shadow gap</div> <div>23 - Brickwork soffit</div> <div>24 - Metal door as metal fins on metal backing panel</div>		<div>NOTE</div> <div>When this drawing is issued in uncontrolled CAD format it will be accompanied by a PDF version and is issued to enable the recipient to prepare their own documents / models / drawings for which they are solely responsible. The recipient should report all drawing errors, omissions and discrepancies to the architect. All dimensions should be checked on site by the contractor and such dimensions shall be the contractor's responsibility.</div> <div>Alford Hall Monaghan Morris Limited accepts no responsibility or liability for:-</div> <div>- any use of this drawing by parties other than the party for whom it was prepared or for purposes other than those for which it was prepared</div> <div>- any alterations or additions to or discrepancies arising out of changes to the background information on which the drawings are based that was current at the time of issue, and which occur to that information after it has been issued by AHMM</div> <div>- any loss or degradation of the information held in this drawing resulting from the translation from the original file format to any other file format or from the recipient's reading of it in any other programme or any version of the programme other than that which was used to prepare it</div> <div>- the accuracy of survey information provided by others or for any costs, claims, proceedings and expenses arising out of reliance on such information</div> <div>- any scaling from this drawing other than by the local planning authority solely for the purposes of the planning application to which it relates</div>		<div>LOCATION</div> <div>Oval Road</div> <div></div>		<div>ALLFORD HALL MONAGHAN MORRIS</div> <div>ARCHITECTS Ltd</div> <div>MORELANDS, 5-23 OLD STREET LONDON EC1V 9HL</div> <div>TEL 020 7251 5261 FAX 020 7251 5123 WEB WWW.AHMM.CO.UK</div> <div>job title</div> <div>CENTRIC CLOSE</div> <div>drawing title / location</div> <div>PROPOSED ELEVATION - NORTH</div> <div><div>drawn by</div><div>checked</div><div>scale</div><div>status</div></div> <div><div>KP</div><div>JR</div><div>1:125@A1; 1:250@A3</div><div>FOR APPROVAL</div></div> <div><div>project</div><div>zone</div><div>source</div><div>classification</div><div>drawing no.</div><div>revision</div></div> <div><div>16041</div><div>AA</div><div>A</div><div>(P00)_221</div><div>P01</div><div></div></div>					
---	--	---	--	--	--	---	--	--	--	--	--



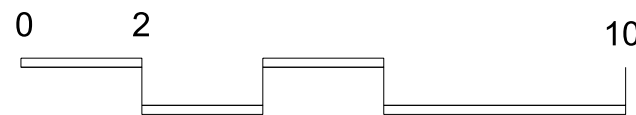
CENTRIC CLOSE

33 OVAL ROAD

- KEY
- 01 - Facing brickwork type 01
 - 02 - Patterned facing brickwork type 02
 - 03 - Metal framed glazed sliding doors
 - 04 - Metal framed glazed doors
 - 05 - Metal framed window with opening lights
 - 06 - Metal framed fixed window
 - 07 - Metal balustrade
 - 08 - Metal balcony fascia / soffit
 - 09 - Metal framed glazed curtain walling
 - 10 - Metal framed opening lights
 - 11 - 10mm wide x 40mm deep metal fins on metal backing panel
 - 12 - Metal doors
 - 13 - Metal louvres

- 14 - Metal projecting roof profile
- 15 - Pre-cast concrete plinth / cornice
- 16 - Chamfered brickwork panel
- 17 - Perforated brickwork screen with fixed glazing behind
- 18 - Projecting metal canopy
- 19 - Metal loured doors
- 20 - Glazed external screen
- 21 - Obscured glazing
- 22 - Brickwork shadow gap
- 23 - Brickwork soffit
- 24 - Metal door as metal fins on metal backing panel

AOV
AUTOMATIC OPENING VENT

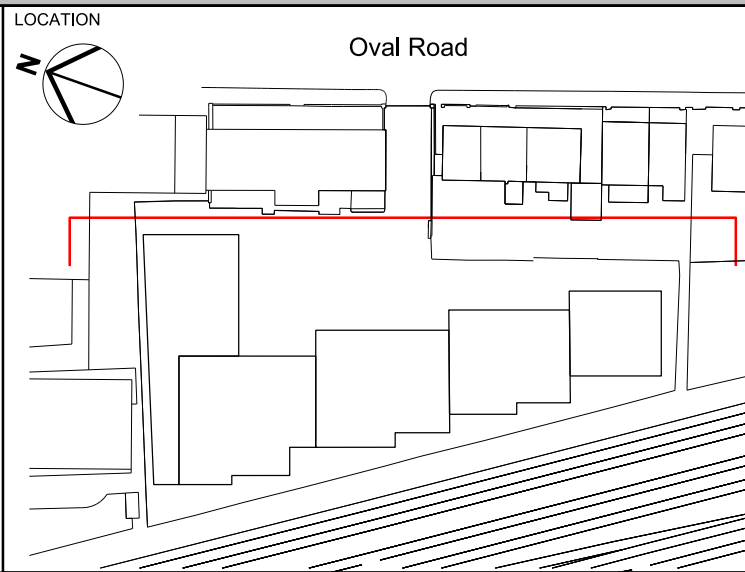


NOTE

When this drawing is issued in uncontrolled CAD format it will be accompanied by a PDF version and is issued to enable the recipient to prepare their own documents / models / drawings for which they are solely responsible. The recipient should report all drawing errors, omissions and discrepancies to the architect. All dimensions should be checked on site by the contractor and such dimensions shall be the contractor's responsibility.

Allford Hall Monaghan Morris Limited accepts no responsibility or liability for:-

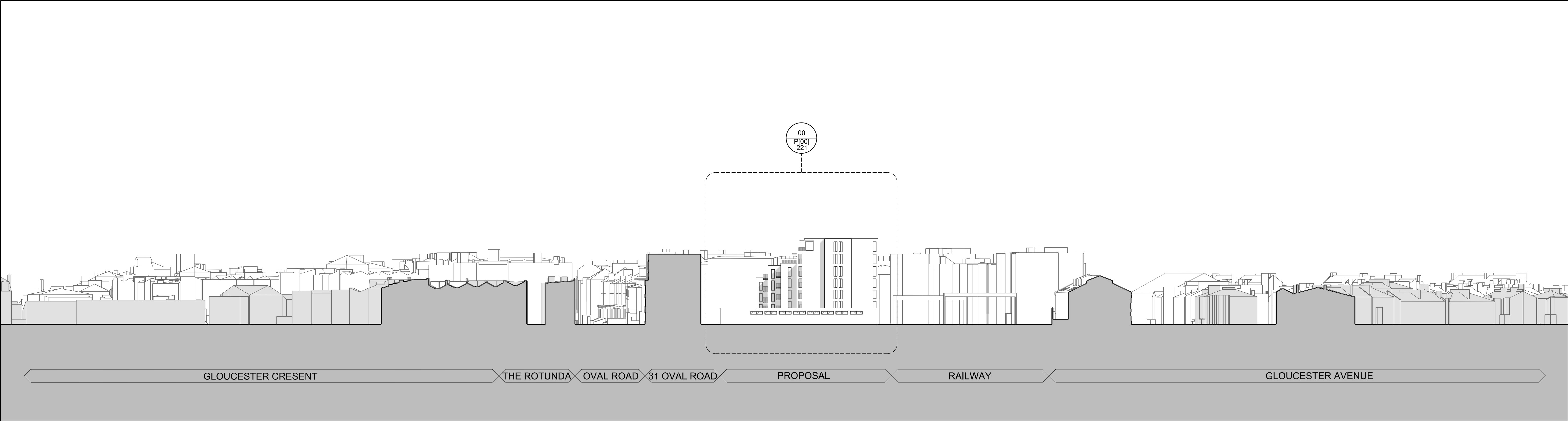
- any use of this drawing by parties other than the party for whom it was prepared or for purposes other than those for which it was prepared
- any alterations or additions to or discrepancies arising out of changes to the background information on which the drawings are based that was current at the time of issue, and which occur to that information after it has been issued by AHMM
- any loss or degradation of the information held in this drawing resulting from the translation from the original file format to any other file format or from the recipient's reading of it in any other programme or any version of the programme other than that which was used to prepare it
- the accuracy of survey information provided by others or for any costs, claims, proceedings and expenses arising out of reliance on such information
- any scaling from this drawing other than by the local planning authority solely for the purposes of the planning application to which it relates



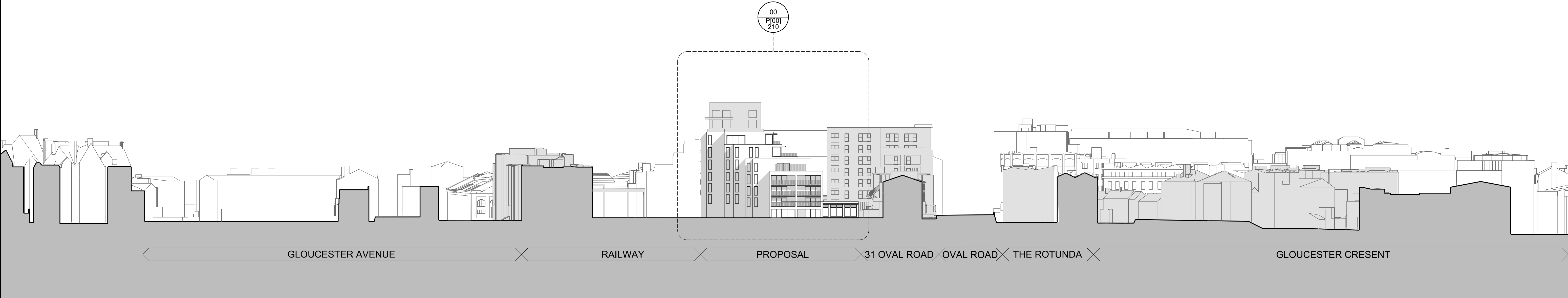
ALLFORD HALL MONAGHAN MORRIS					
ARCHITECTS LTD MORELANDS, 5-23 OLD STREET LONDON EC1V 9HL TEL 020 7251 5261 FAX 020 7251 5123 WEB WWW.AHMM.CO.UK					
job title CENTRIC CLOSE					
drawing title / location PROPOSED EAST ELEVATION					
drawn by KP	checked JR	scale 1:125@A1; 1:250@A3	status FOR APPROVAL		
project 16041	zone	source A	classification (P00)_222	drawing no. P01	revision



<div>01 - Facing brickwork type 01</div> <div>02 - Patterned facing brickwork type 02</div> <div>03 - Metal framed glazed sliding doors</div> <div>04 - Metal framed glazed doors</div> <div>05 - Metal framed window with opening lights</div> <div>06 - Metal framed fixed window</div> <div>07 - Metal balustrade</div> <div>08 - Metal balcony fascia / soffit</div> <div>09 - Metal framed glazed curtain walling</div> <div>10 - Metal framed opening lights</div> <div>11 - 10mm wide x 40mm deep metal fins on metal backing panel</div> <div>12 - Metal doors</div> <div>13 - Metal louvres</div> <div>14 - Metal projecting roof profile</div> <div>15 - Pre-cast concrete plinth / cornice</div> <div>16 - Chamfered brickwork panel</div> <div>17 - Perforated brickwork screen with fixed glazing behind</div> <div>18 - Projecting metal canopy</div> <div>19 - Metal loured doors</div> <div>20 - Glazed external screen</div> <div>21 - Obscured glazing</div> <div>22 - Brickwork shadow gap</div> <div>23 - Brickwork soffit</div> <div>24 - Metal door as metal fins on metal backing panel</div>		<div>AOV</div> <div>AUTOMATIC OPENING VENT</div> <div><div>0</div><div>2</div><div>10</div></div>		<div>NOTE</div> <div>When this drawing is issued in uncontrolled CAD format it will be accompanied by a PDF version and is issued to enable the recipient to prepare their own documents / models / drawings for which they are solely responsible. The recipient should report all drawing errors, omissions and discrepancies to the architect. All dimensions should be checked on site by the contractor and such dimensions shall be the contractor's responsibility.</div> <div>Allford Hall Monaghan Morris Limited accepts no responsibility or liability for:-</div> <div>- any use of this drawing by parties other than the party for whom it was prepared or for purposes other than those for which it was prepared</div> <div>- any alterations or additions to or discrepancies arising out of changes to the background information on which the drawings are based that was current at the time of issue, and which occur to that information after it has been issued by AHMM</div> <div>- any loss or degradation of the information held in this drawing resulting from the translation from the original file format to any other file format or from the recipient's reading of it in any other programme or any version of the programme other than that which was used to prepare it</div> <div>- the accuracy of survey information provided by others or for any costs, claims, proceedings and expenses arising out of reliance on such information</div> <div>- any scaling from this drawing other than by the local planning authority solely for the purposes of the planning application to which it relates</div>		<div>LOCATION</div> <div>Oval Road</div> <div></div>		<div>ALLFORD HALL MONAGHAN MORRIS</div> <div>ARCHITECTS Ltd</div> <div>MORELANDS, 5-23 OLD STREET LONDON EC1V 9HL</div> <div>TEL 020 7251 5261 FAX 020 7251 5123 WEB WWW.AHMM.CO.UK</div> <div>job title</div> <div>CENTRIC CLOSE</div> <div>drawing title / location</div> <div>PROPOSED WEST ELEVATION</div> <div><div>drawn by</div><div>checked</div><div>scale</div><div>status</div></div> <div><div>KP</div><div>JR</div><div>1:125@A1; 1:250@A3</div><div>FOR APPROVAL</div></div> <div><div>project</div><div>zone</div><div>source</div><div>classification</div><div>drawing no.</div><div>revision</div></div> <div><div>16041</div><div></div><div>A</div><div>(P00)_223</div><div>P01</div><div></div></div>			
--	--	---	--	--	--	--	--	--	--	--	--

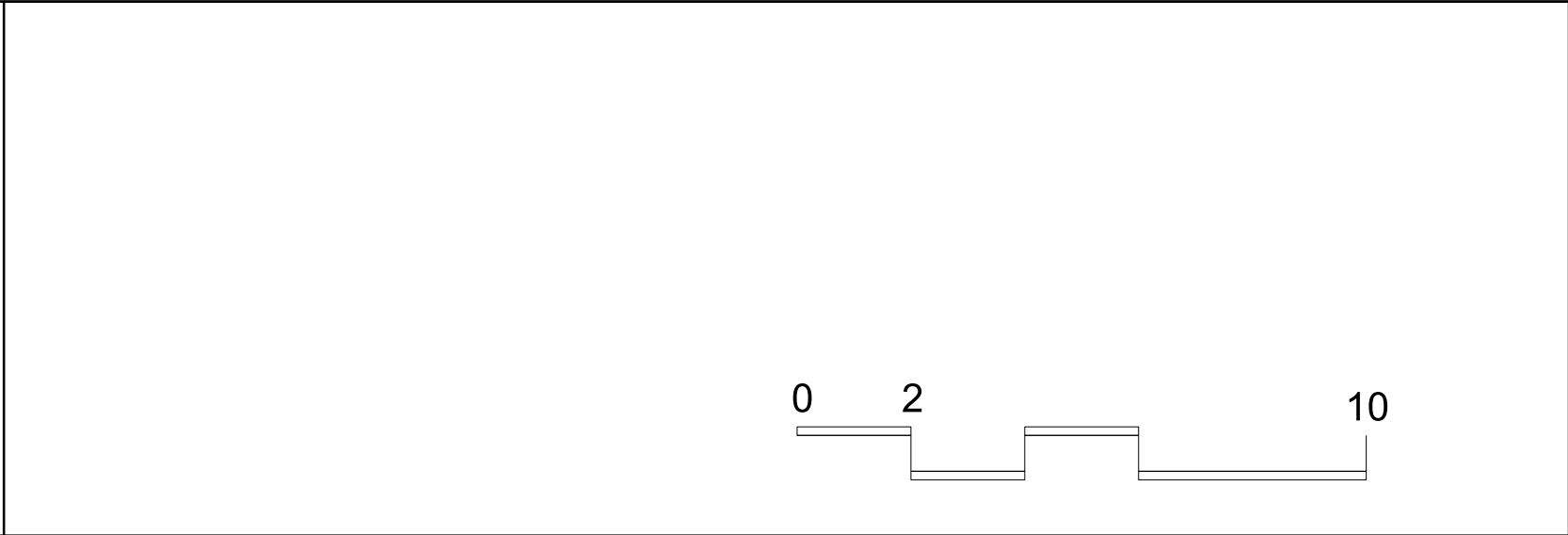


PROPOSED NORTH STREET ELEVATION



PROPOSED SOUTH STREET ELEVATION

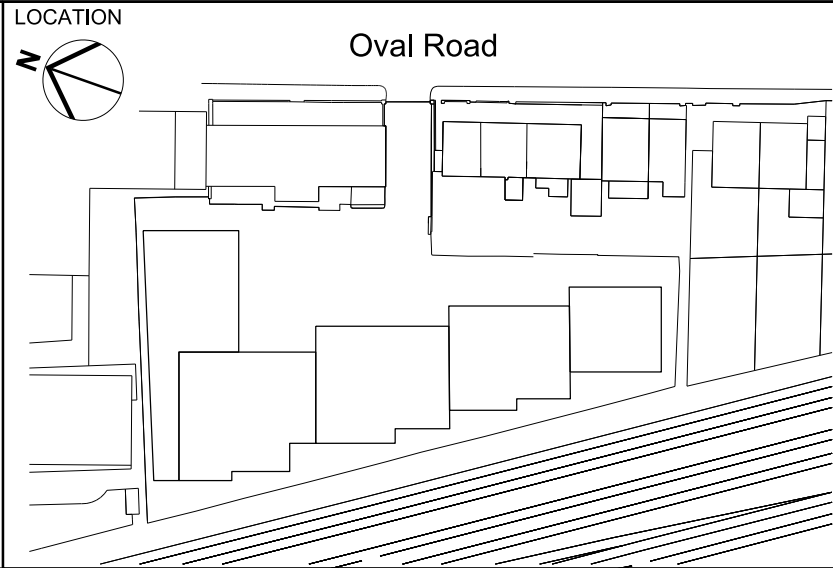
KEY



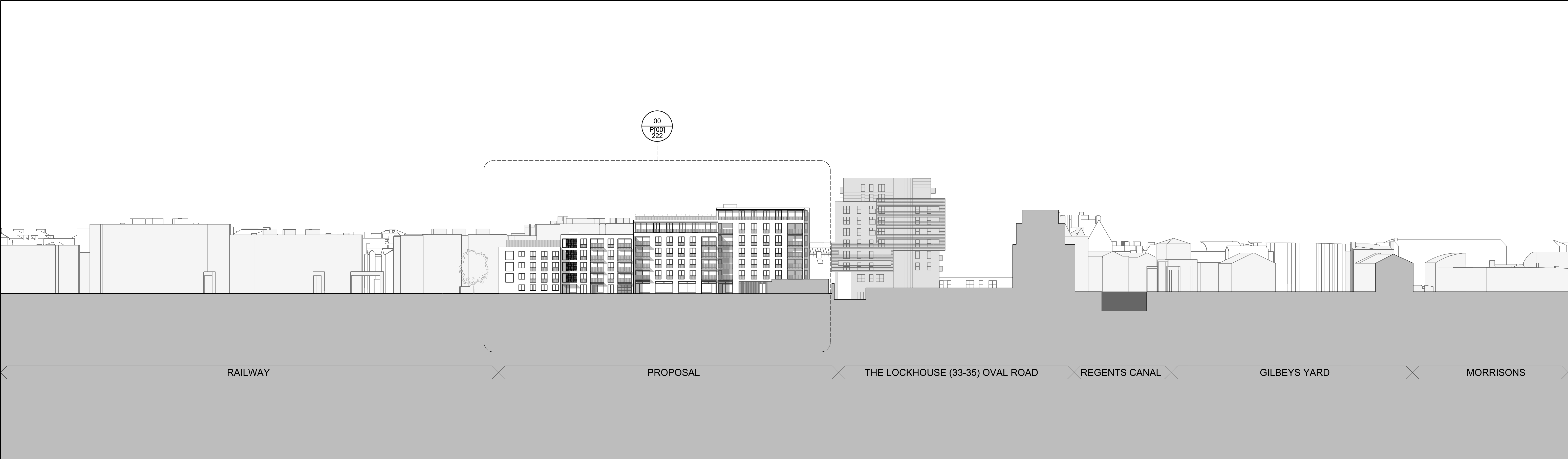
NOTE

When this drawing is issued in uncontrolled CAD format it will be accompanied by a PDF version and is issued to enable the recipient to prepare their own documents / models / drawings for which they are solely responsible.
The recipient should report all drawing errors, omissions and discrepancies to the architect. All dimensions should be checked on site by the contractor and such dimensions shall be the contractor's responsibility.

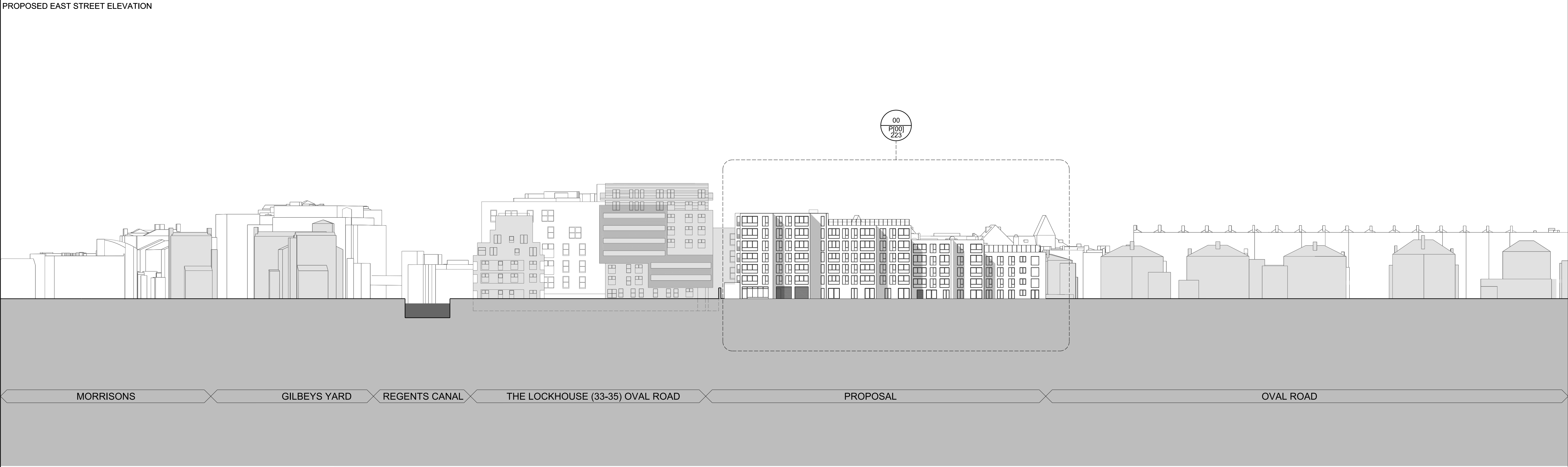
Allford Hall Monaghan Morris Limited accepts no responsibility or liability for:-
- any use of this drawing by parties other than the party for whom it was prepared or for purposes other than those for which it was prepared
- any alterations or additions to or discrepancies arising out of changes to the background information on which the drawings are based that was current at the time of issue, and which occur to that information after it has been issued by AHMM
- any loss or degradation of the information held in this drawing resulting from the translation from the original file format to any other file format or from the recipient's reading of it in any other programme or any version of the programme other than that which was used to prepare it
- the accuracy of survey information provided by others or for any costs, claims, proceedings and expenses arising out of reliance on such information
- any scaling from this drawing other than by the local planning authority solely for the purposes of the planning application to which it relates



ALLFORD HALL MONAGHAN MORRIS					
ARCHITECTS Ltd MORELANDS, 5-23 OLD STREET LONDON EC1V 9HL TEL 020 7251 5261 FAX 020 7251 5123 WEB WWW.AHMM.CO.UK					
job title					
CENTRIC CLOSE					
drawing title / location					
PROPOSED NORTH & SOUTH STREET ELEVATIONS					
drawn by	checked	scale	status		
KP	JR	1:500@A1; 1:1000@A3	FOR APPROVAL		
project	zone	source	classification	drawing no.	revision
16041			A (P00)_210	P01	



PROPOSED EAST STREET ELEVATION



PROPOSED EAST STREET ELEVATION

KEY

NOTE

When this drawing is issued in uncontrolled CAD format it will be accompanied by a PDF version and is issued to enable the recipient to prepare their own documents / models / drawings for which they are solely responsible.

The recipient should report all drawing errors, omissions and discrepancies to the architect. All dimensions should be checked on site by the contractor and such dimensions shall be the contractor's responsibility.

Allford Hall Monaghan Morris Limited accepts no responsibility or liability for:-

- any use of this drawing by parties other than the party for whom it was prepared or for purposes other than those for which it was prepared
- any alterations or additions to or discrepancies arising out of changes to the background information on which the drawings are based that was current at the time of issue, and which occur to that information after it has been issued by AHMM
- any loss or degradation of the information held in this drawing resulting from the translation from the original file format to any other file format or from the recipient's reading of it in any other programme or any version of the programme other than that which was used to prepare it
- the accuracy of survey information provided by others or for any costs, claims, proceedings and expenses arising out of reliance on such information
- any scaling from this drawing other than by the local planning authority solely for the purposes of the planning application to which it relates

LOCATION

ALLFORD HALL MONAGHAN MORRIS

ARCHITECTS Ltd
MORELANDS, 5-23 OLD STREET LONDON EC1V 9HL
TEL 020 7251 5261 FAX 020 7251 5123 WEB WWW.AHMM.CO.UK

job title

CENTRIC CLOSE

drawing title / location

PROPOSED EAST & WEST STREET ELEVATIONS

drawn by	checked	scale	status
KP	JR	1:500@A1; 1:1000@A3	FOR APPROVAL
project	zone	source	classification
16041			A (P00)_211P01