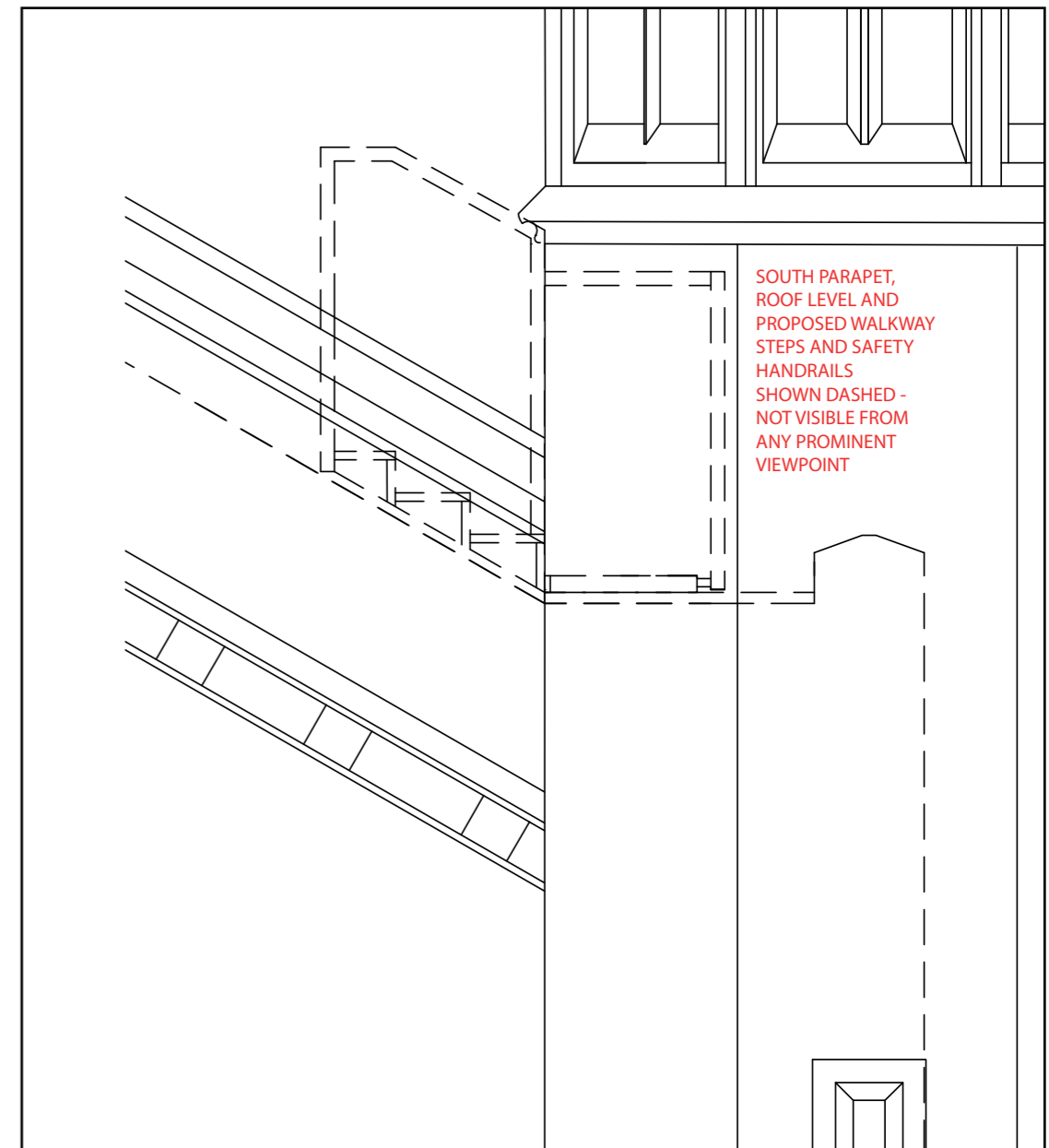
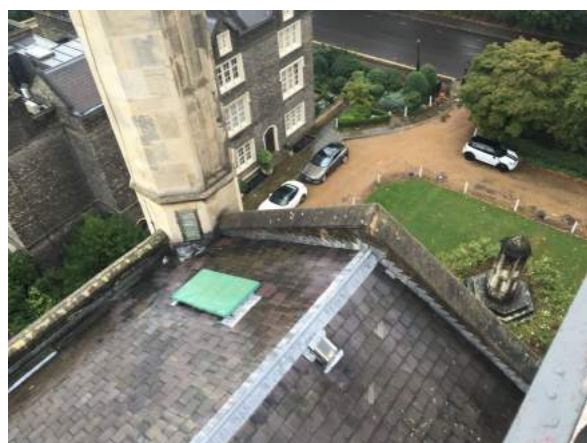


PLAN AS PROPOSED - SOUTH TURRET AND ROOF ACCESS HATCH TO CLOCK CHAMBER



WEST ELEVATION AS PROPOSED - ACCESS WALKWAY HANDRAIL SHOWN DASHED IS NOT VISIBLE FROM ANY PROMINENT VIEWPOINT



REFERENCE PHOTO (FROM NORTH EAST) OF ROOF ACCESS DOOR FROM SOUTH TURRET AND CLOCK CHAMBER LUNCH

GENERAL NOTES:
 Access to the nave roof space and clock chamber is presently limited to a roof hatch on the southern roof pitch adjacent to the south turret. It is presently a health and safety concern due to the low south parapet and multiple courses of slipped slates beneath the hatch.

It is hoped that the clock will be serviced and restored to working order during the works contract. Such repairs have been prevented to date due to poor access to the clock chamber.

PROPOSED WORKS:
 Following installation of safe and permanent access (fixed safety ladder) within the south turret, proposals for safe, proposals for permanent access from south turret roof access door to roof hatch to clock chamber to be confirmed by access specialist.

Allow for bespoke access solution to include metal horizontal walkway with guard rail to the east and south, and metal roof steps with guard rail to east and west, all on frames to suit roof pitch.

FOR PLANNING
 St. Katharine's, The Danish Church
 Proposed Access to Clock Chamber Hatch

Job No. 043 Drawing No. ACC02 Rev. 00
 Scale: 1:20@A3
 Date: 09 December 2016

MFA / Malcolm Fryer Architects
 23 Gerrard Road, London N1 8AY
 www.mfryer-architects.com