

Bauder Bituminous Membrane Green Roof System - Standard Detail
Extensive substrate based green roof system - Bauder XF118 wild flower blanket

XF118 / B10 - 2A

Issue	Date	Checked
1	MARCH 2013	

NOT TO SCALE

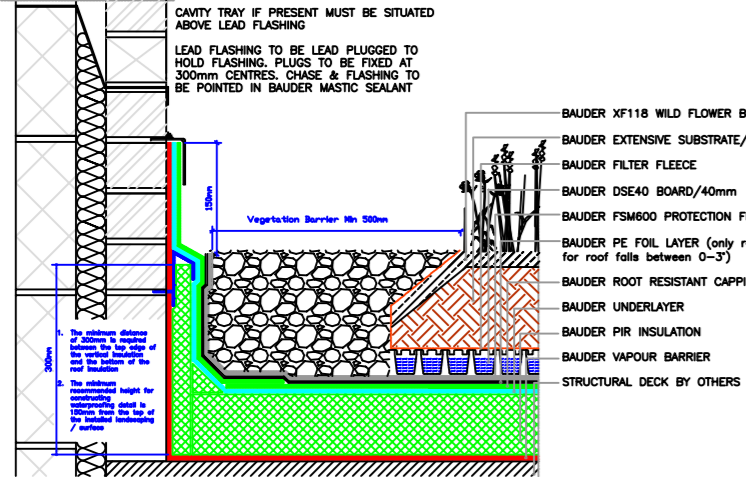
Notes:

- This detail is of a conceptual nature and should only be used as such and not included as part of a specification document. Please contact our Technical Department to ensure the details you require are appropriate and accurate.
- Any additional biodiversity landscaping is normally undertaken in accordance with an ecological report and recommendations. Bauder does not take any responsibility for the design, performance or maintenance of any planting schemes.
- Weight loading for any surface landscaping items, such as trees, large, unrooted items of growing medium and fully established planting (vegetation, making up the Biodiverse Landscaping), must be provided directly from the specifier of landscape designer and should be the subject to a structural engineer's approval.

BAUDER

UK OFFICE
Bauder Limited
70 Lansder Road,
Ipswich,
Suffolk IP3 0DH,
England,
UK
T: +44 (0)1473 230761
F: +44 (0)1473 230761
E: technical@bauder.co.uk
bauder.co.uk

IRELAND OFFICE
Bauder Limited
O'Duffy Centre,
Cross Lane,
Carrickmacross,
Co. Monaghan,
Ireland
T: +353 (0)42 9692 333
F: +353 (0)42 9692 839
E: technical@bauder.ie
bauder.ie



TYPICAL SECTION DETAIL / WALL UPSTAND (INSULATED CAVITY) / DSE40 BOARD 0 - 5° SLOPE

Bauder Bituminous Membrane Green Roof System - Standard Detail
Extensive substrate based green roof system - Bauder XF118 wild flower blanket

XF118 / B10 - 3A

Issue	Date	Checked
1	MARCH 2013	

NOT TO SCALE

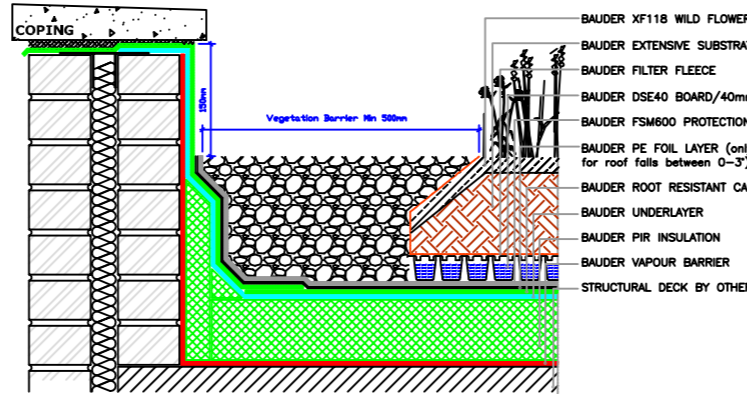
Notes:

- This detail is of a conceptual nature and should only be used as such and not included as part of a specification document. Please contact our Technical Department to ensure the details you require are appropriate and accurate.
- Any additional biodiversity landscaping is normally undertaken in accordance with an ecological report and recommendations. Bauder does not take any responsibility for the design, performance or maintenance of any planting schemes.
- Weight loading for any surface landscaping items, such as trees, large, unrooted items of growing medium and fully established planting (vegetation, making up the Biodiverse Landscaping), must be provided directly from the specifier of landscape designer and should be the subject to a structural engineer's approval.

BAUDER

UK OFFICE
Bauder Limited
70 Lansder Road,
Ipswich,
Suffolk IP3 0DH,
England,
UK
T: +44 (0)1473 230761
F: +44 (0)1473 230761
E: technical@bauder.co.uk
bauder.co.uk

IRELAND OFFICE
Bauder Limited
O'Duffy Centre,
Cross Lane,
Carrickmacross,
Co. Monaghan,
Ireland
T: +353 (0)42 9692 333
F: +353 (0)42 9692 839
E: technical@bauder.ie
bauder.ie



TYPICAL SECTION DETAIL / INSULATED PARAPET UPSTAND / DSE40 BOARD 0 - 5° SLOPE

Bauder Bituminous Membrane Green Roof System - Standard Detail
Extensive substrate based green roof system - Bauder XF118 wild flower blanket

XF118 / B10 - 4A

Issue	Date	Checked
1	MARCH 2013	

NOT TO SCALE

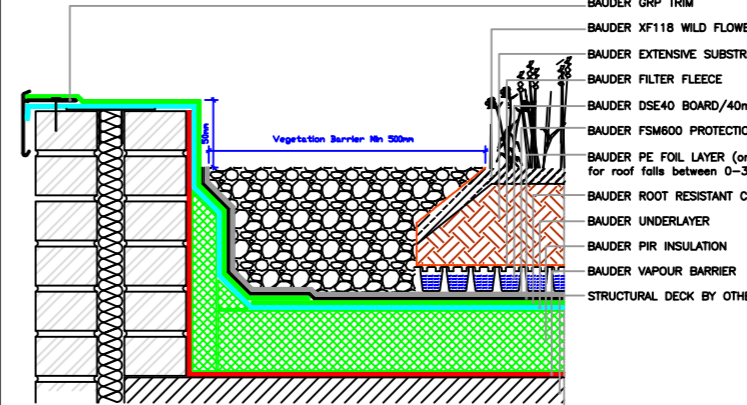
Notes:

- This detail is of a conceptual nature and should only be used as such and not included as part of a specification document. Please contact our Technical Department to ensure the details you require are appropriate and accurate.
- Any additional biodiversity landscaping is normally undertaken in accordance with an ecological report and recommendations. Bauder does not take any responsibility for the design, performance or maintenance of any planting schemes.
- Weight loading for any surface landscaping items, such as trees, large, unrooted items of growing medium and fully established planting (vegetation, making up the Biodiverse Landscaping), must be provided directly from the specifier of landscape designer and should be the subject to a structural engineer's approval.

BAUDER

UK OFFICE
Bauder Limited
70 Lansder Road,
Ipswich,
Suffolk IP3 0DH,
England,
UK
T: +44 (0)1473 230761
F: +44 (0)1473 230761
E: technical@bauder.co.uk
bauder.co.uk

IRELAND OFFICE
Bauder Limited
O'Duffy Centre,
Cross Lane,
Carrickmacross,
Co. Monaghan,
Ireland
T: +353 (0)42 9692 333
F: +353 (0)42 9692 839
E: technical@bauder.ie
bauder.ie



TYPICAL SECTION DETAIL / CHECK KERB UPSTAND / DSE40 BOARD 0 - 5° SLOPE

Bauder Bituminous Membrane Green Roof System - Standard Detail
Extensive substrate based green roof system - Bauder XF118 wild flower blanket

XF118 / B10 - 7A

Issue	Date	Checked
1	MARCH 2013	

NOT TO SCALE

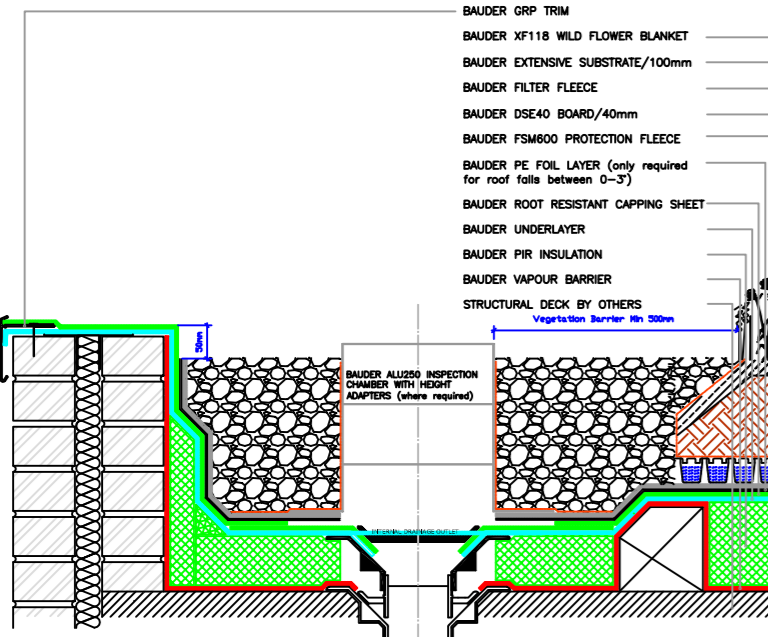
Notes:

- This detail is of a conceptual nature and should only be used as such and not included as part of a specification document. Please contact our Technical Department to ensure the details you require are appropriate and accurate.
- Any additional biodiversity landscaping is normally undertaken in accordance with an ecological report and recommendations. Bauder does not take any responsibility for the design, performance or maintenance of any planting schemes.
- Weight loading for any surface landscaping items, such as trees, large, unrooted items of growing medium and fully established planting (vegetation, making up the Biodiverse Landscaping), must be provided directly from the specifier of landscape designer and should be the subject to a structural engineer's approval.

BAUDER

UK OFFICE
Bauder Limited
70 Lansder Road,
Ipswich,
Suffolk IP3 0DH,
England,
UK
T: +44 (0)1473 230761
F: +44 (0)1473 230761
E: technical@bauder.co.uk
bauder.co.uk

IRELAND OFFICE
Bauder Limited
O'Duffy Centre,
Cross Lane,
Carrickmacross,
Co. Monaghan,
Ireland
T: +353 (0)42 9692 333
F: +353 (0)42 9692 839
E: technical@bauder.ie
bauder.ie



TYPICAL SECTION DETAIL / CHECK KERB UPSTAND / DSE40 BOARD 0 - 5° SLOPE

Bauder Bituminous Membrane Green Roof System - Standard Detail
Extensive substrate based green roof system - Bauder XF118 wild flower blanket

XF118 / B10 - 5A

Issue	Date	Checked
1	MARCH 2013	

NOT TO SCALE

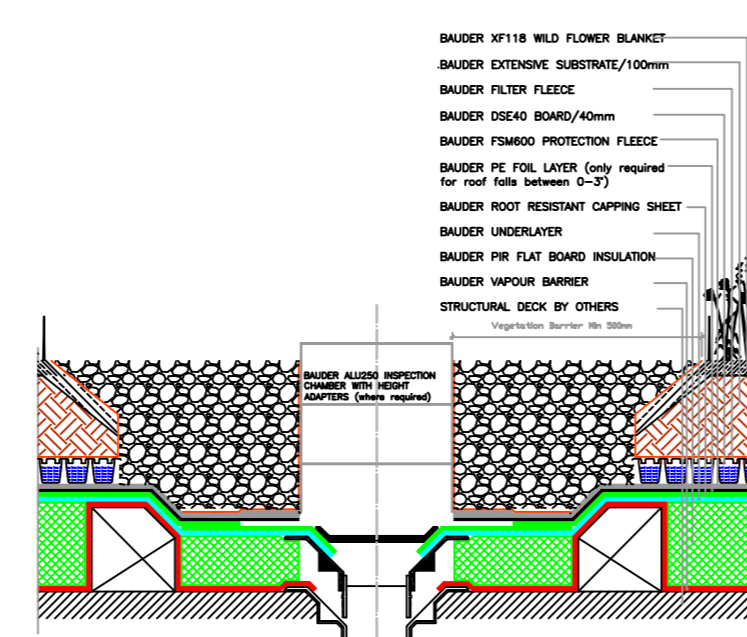
Notes:

- This detail is of a conceptual nature and should only be used as such and not included as part of a specification document. Please contact our Technical Department to ensure the details you require are appropriate and accurate.
- Any additional biodiversity landscaping is normally undertaken in accordance with an ecological report and recommendations. Bauder does not take any responsibility for the design, performance or maintenance of any planting schemes.
- Weight loading for any surface landscaping items, such as trees, large, unrooted items of growing medium and fully established planting (vegetation, making up the Biodiverse Landscaping), must be provided directly from the specifier of landscape designer and should be the subject to a structural engineer's approval.

BAUDER

UK OFFICE
Bauder Limited
70 Lansder Road,
Ipswich,
Suffolk IP3 0DH,
England,
UK
T: +44 (0)1473 230761
F: +44 (0)1473 230761
E: technical@bauder.co.uk
bauder.co.uk

IRELAND OFFICE
Bauder Limited
O'Duffy Centre,
Cross Lane,
Carrickmacross,
Co. Monaghan,
Ireland
T: +353 (0)42 9692 333
F: +353 (0)42 9692 839
E: technical@bauder.ie
bauder.ie



TYPICAL SECTION DETAIL / INTERNAL DRAINAGE OUTLET TO FIELD AREA / DSE40 BOARD 0 - 5° SLOPE

Bauder Bituminous Membrane Green Roof System - Standard Detail
Extensive substrate based green roof system - Bauder XF118 wild flower blanket

XF118 / B10 - 10A

Issue	Date	Checked
1	MARCH 2013	

NOT TO SCALE

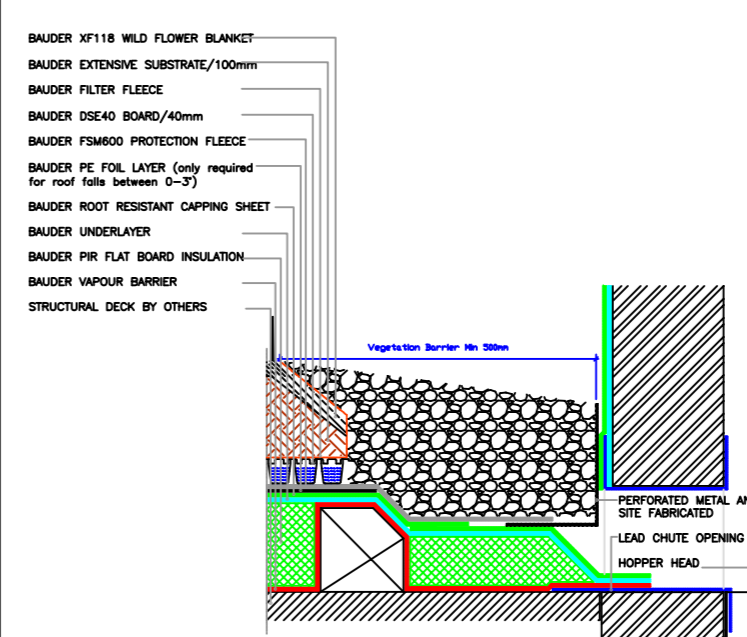
Notes:

- This detail is of a conceptual nature and should only be used as such and not included as part of a specification document. Please contact our Technical Department to ensure the details you require are appropriate and accurate.
- Any additional biodiversity landscaping is normally undertaken in accordance with an ecological report and recommendations. Bauder does not take any responsibility for the design, performance or maintenance of any planting schemes.
- Weight loading for any surface landscaping items, such as trees, large, unrooted items of growing medium and fully established planting (vegetation, making up the Biodiverse Landscaping), must be provided directly from the specifier of landscape designer and should be the subject to a structural engineer's approval.

BAUDER

UK OFFICE
Bauder Limited
70 Lansder Road,
Ipswich,
Suffolk IP3 0DH,
England,
UK
T: +44 (0)1473 230761
F: +44 (0)1473 230761
E: technical@bauder.co.uk
bauder.co.uk

IRELAND OFFICE
Bauder Limited
O'Duffy Centre,
Cross Lane,
Carrickmacross,
Co. Monaghan,
Ireland
T: +353 (0)42 9692 333
F: +353 (0)42 9692 839
E: technical@bauder.ie
bauder.ie



TYPICAL SECTION DETAIL / UPSTAND TO CHUTE DRAINAGE OPENING / DSE40 BOARD 0 - 5° SLOPE

Bauder Bituminous Membrane Green Roof System - Standard Detail
Extensive substrate based green roof system - Bauder XF118 wild flower blanket

XF118 / B10 - 8A

Issue	Date	Checked
1	MARCH 2013	

NOT TO SCALE

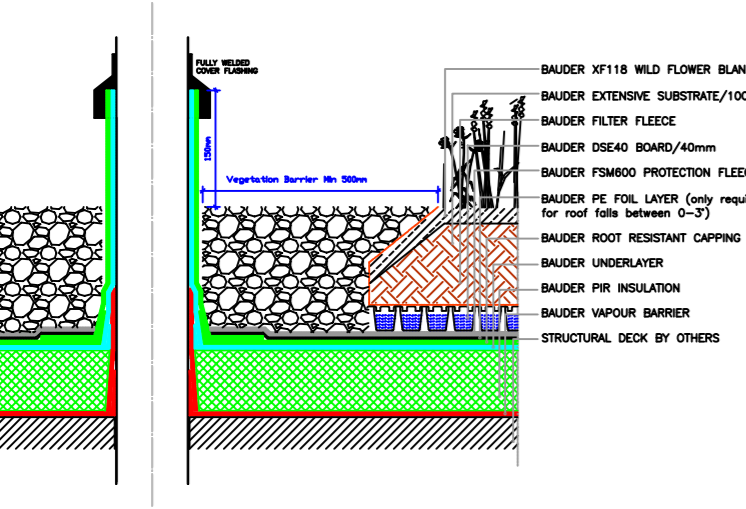
Notes:

- This detail is of a conceptual nature and should only be used as such and not included as part of a specification document. Please contact our Technical Department to ensure the details you require are appropriate and accurate.
- Any additional biodiversity landscaping is normally undertaken in accordance with an ecological report and recommendations. Bauder does not take any responsibility for the design, performance or maintenance of any planting schemes.
- Weight loading for any surface landscaping items, such as trees, large, unrooted items of growing medium and fully established planting (vegetation, making up the Biodiverse Landscaping), must be provided directly from the specifier of landscape designer and should be the subject to a structural engineer's approval.

BAUDER

UK OFFICE
Bauder Limited
70 Lansder Road,
Ipswich,
Suffolk IP3 0DH,
England,
UK
T: +44 (0)1473 230761
F: +44 (0)1473 230761
E: technical@bauder.co.uk
bauder.co.uk

IRELAND OFFICE
Bauder Limited
O'Duffy Centre,
Cross Lane,
Carrickmacross,
Co. Monaghan,
Ireland
T: +353 (0)42 9692 333
F: +353 (0)42 9692 839
E: technical@bauder.ie
bauder.ie



TYPICAL SECTION DETAIL / UPSTAND TO COLD PIPE OVER 100mm Dia / DSE40 BOARD 0 - 5° SLOPE

Bauder Bituminous Membrane Green Roof System - Standard Detail
Extensive substrate based green roof system - Bauder XF118 wild flower blanket

XF118 / B10 - 9A

Issue	Date	Checked
1	MARCH 2013	

NOT TO SCALE

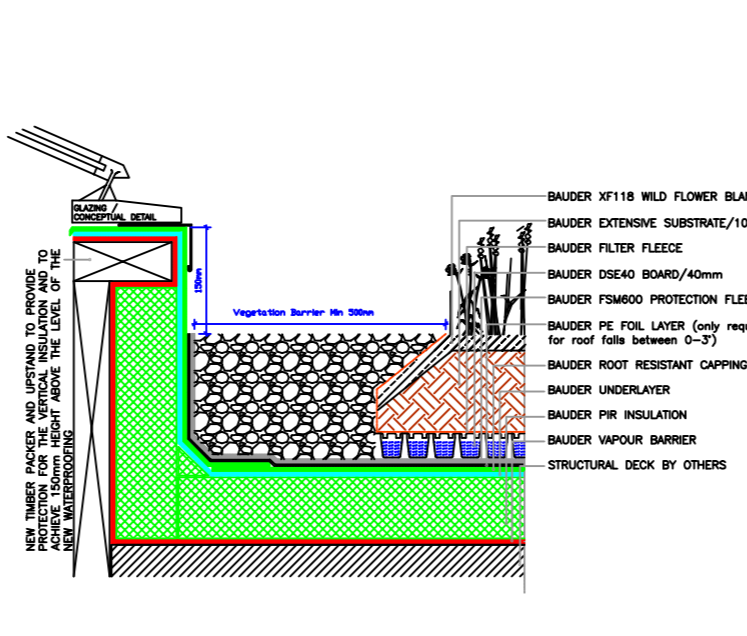
Notes:

- This detail is of a conceptual nature and should only be used as such and not included as part of a specification document. Please contact our Technical Department to ensure the details you require are appropriate and accurate.
- Any additional biodiversity landscaping is normally undertaken in accordance with an ecological report and recommendations. Bauder does not take any responsibility for the design, performance or maintenance of any planting schemes.
- Weight loading for any surface landscaping items, such as trees, large, unrooted items of growing medium and fully established planting (vegetation, making up the Biodiverse Landscaping), must be provided directly from the specifier of landscape designer and should be the subject to a structural engineer's approval.

BAUDER

UK OFFICE
Bauder Limited
70 Lansder Road,
Ipswich,
Suffolk IP3 0DH,
England,
UK
T: +44 (0)1473 230761
F: +44 (0)1473 230761
E: technical@bauder.co.uk
bauder.co.uk

IRELAND OFFICE
Bauder Limited
O'Duffy Centre,
Cross Lane,
Carrickmacross,
Co. Monaghan,
Ireland
T: +353 (0)42 9692 333
F: +353 (0)42 9692 839
E: technical@bauder.ie
bauder.ie



TYPICAL SECTION DETAIL / UPSTAND TO GLAZING OR ROOFLIGHT / DSE40 BOARD 0 - 5° SLOPE

Bauder Bituminous Membrane Green Roof System - Standard Detail
Extensive substrate based green roof system - Bauder XF118 wild flower blanket

XF118 / B10 - 1A

Issue	Date	Checked
1	MARCH 2013	

NOT TO SCALE

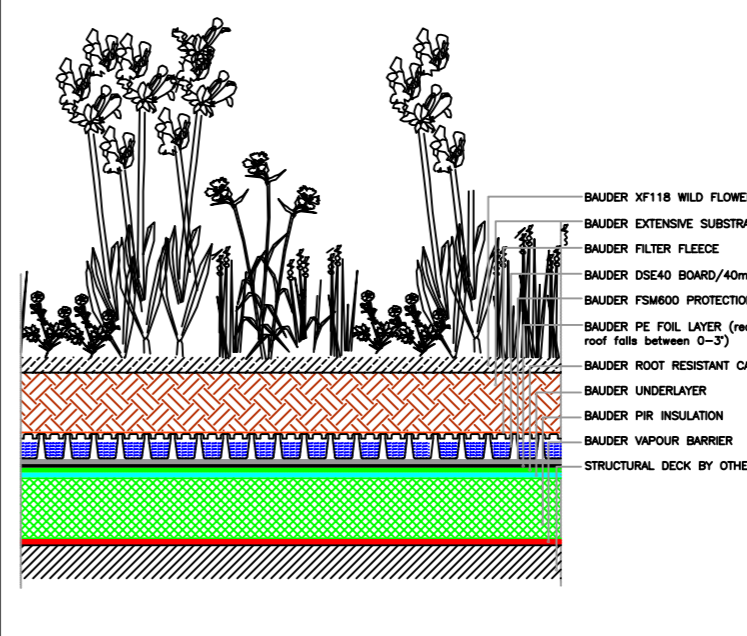
Notes:

- This detail is of a conceptual nature and should only be used as such and not included as part of a specification document. Please contact our Technical Department to ensure the details you require are appropriate and accurate.
- Any additional biodiversity landscaping is normally undertaken in accordance with an ecological report and recommendations. Bauder does not take any responsibility for the design, performance or maintenance of any planting schemes.
- Weight loading for any surface landscaping items, such as trees, large, unrooted items of growing medium and fully established planting (vegetation, making up the Biodiverse Landscaping), must be provided directly from the specifier of landscape designer and should be the subject to a structural engineer's approval.

BAUDER

UK OFFICE
Bauder Limited
70 Lansder Road,
Ipswich,
Suffolk IP3 0DH,
England,
UK
T: +44 (0)1473 230761
F: +44 (0)1473 230761
E: technical@bauder.co.uk
bauder.co.uk

IRELAND OFFICE
Bauder Limited
O'Duffy Centre,
Cross Lane,
Carrickmacross,
Co. Monaghan,
Ireland
T: +353 (0)42 9692 333
F: +353 (0)42 9692 839
E: technical@bauder.ie
bauder.ie



TYPICAL SECTION DETAIL / BUILD-UP / DSE40 BOARD 0 - 5° SLOPE

This drawing is a subject to copyright. No part of this document may be reproduced, altered or transmitted in any form or by any means for any purpose without the express permission of Bauder LTD.

NOTES:
THE DIMENSIONS SHOWN ON THE DRAWINGS ARE IN THE MILLIMETER UNITS AND ARE APPROXIMATE ONLY. THESE SHOULD NOT BE USED FOR PRICING PURPOSES AS BAUDER LTD CANNOT BE HELD RESPONSIBLE FOR THE ACCURACY OF THEM

Checked By: BAUDER LTD.

Date: MARCH 2013

Scale: NTS

Title:
A2 - SELECTION OF STANDARD DETAILS
CONCRETE OR PLYWOOD DECK / BAUDER
XF118 WILD FLOWER BLANKET FINISH

BAUDER

UK OFFICE
Bauder Limited
70 Lansder Road,
Ipswich,
Suffolk IP3 0DH,
England,
UK
T: +44 (0)1473 230761
F: +44 (0)1473 230761
E: technical@bauder.co.uk
bauder.co.uk

IRELAND OFFICE
Bauder Limited
O'Duffy Centre, Cross Lane,
Carrickmacross, Co. Monaghan,
Ireland,
T: +353 (0)42 9692 333
F: +353 (0)42 9692 839
E: technical@bauder.ie
bauder.ie