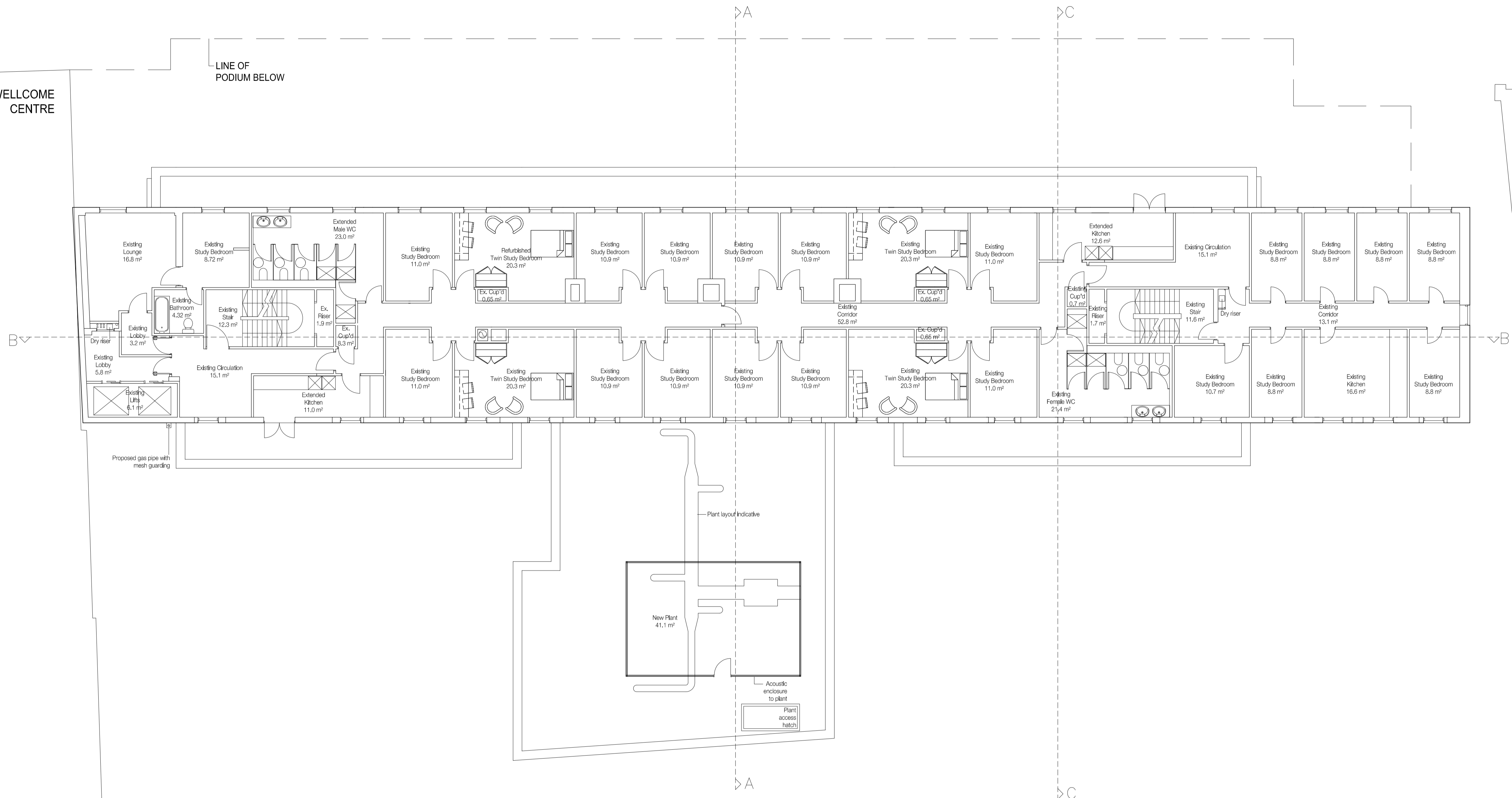


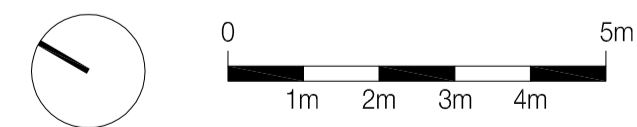
CHARLOTTE STREET

SAINSBURY WELLCOME CENTRE

97 CHARLOTTE STREET



THE MIDDLESEX HOSPITAL ANNEXE (SITE)



**standard notes**

1. Do not scale this drawing.
2. All dimensions must be checked on site and any discrepancies verified with the architect.
3. Unless shown otherwise, all dimensions are to structural surfaces.

**drawing notes**

THIS IS NOT A CONSTRUCTION DRAWING. IT IS UNSUITABLE FOR THE PURPOSE OF CONSTRUCTION AND MUST ON NO ACCOUNT BE USED AS SUCH.

**revisions**

no	date	description
P1	04.07.14	First Issue
P2	17.07.14	Pre-App Meeting
P3	23.07.14	Issue to Design Team
P4	30.07.14	Lightwell revision
P5	26.08.14	South kitchen extended
P6	29.08.14	Stage C Report
P7	04.09.14	Issued for costing
P8	12.09.14	Issued for costing
P9	18.09.14	VAT layout revisions
P10	30.09.14	Access hatch for plant included
P11	06.10.14	Pre-App Meeting

no	date	description
P12	14.11.14	Issue to design team
P13	08.12.14	Principals meeting
P14	09.12.14	Issue to design team
P15	19.12.14	For Design Team comment
P16	15.01.15	Rear extension moved
P17	19.01.15	Planning pack issue to UCL
P18	23.01.15	Issue for Planning

# ASTOR COLLEGE, UCL

## Charlotte Street, W1T 4QB

**date**  
June 2014

**scale**  
1:100@A1

**drawn**  
FH

**checked**  
TG

**drawing number**  
2869 L103

**rev**  
P18

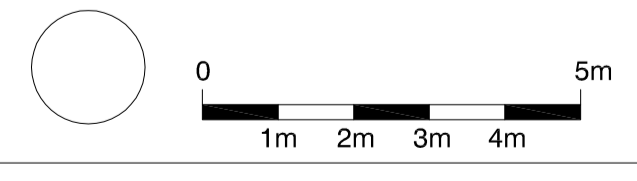
**client**  
UCL

**Proposed 7th Floor Plan**

**Levitt Bernstein**  
1 Kingsland Passage  
London  
E8 2BB

t: 020 7275 7676  
f: 020 7275 9348  
w: levittbernstein.co.uk  
e: post@levittbernstein.co.uk

**Levitt Bernstein**



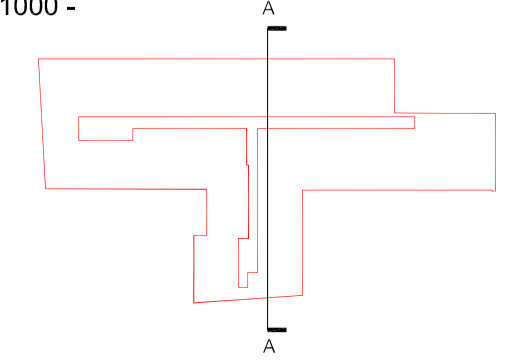
**standard notes**

1. Do not scale this drawing.
2. All dimensions must be checked on site and any discrepancies verified with the architect.
3. Unless shown otherwise, all dimensions are to structural surfaces.

THIS IS NOT A CONSTRUCTION DRAWING. IT IS UNSUITABLE FOR THE PURPOSE OF CONSTRUCTION AND MUST ON NO ACCOUNT BE USED AS SUCH.

**drawing notes**

Key @1:1000 -



**revisions**

date	description
P1 17.07.14	Pre-App Meeting
P2 23.07.14	Design Team Issue
P3 30.07.14	Pre-App Submission
P4 29.08.14	Stage C Report
P5 30.09.14	Podium and VAT revision
P6 06.10.14	Pre-App Meeting
P7 14.11.14	Podium accommodation revised
P8 09.12.14	Issue to design team
P9 19.12.14	For Design Team comment
P10 19.01.15	Planning pack issue to UCL
P11 23.01.15	Issue for Planning

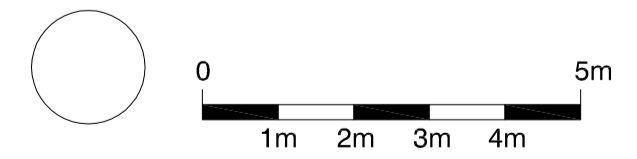
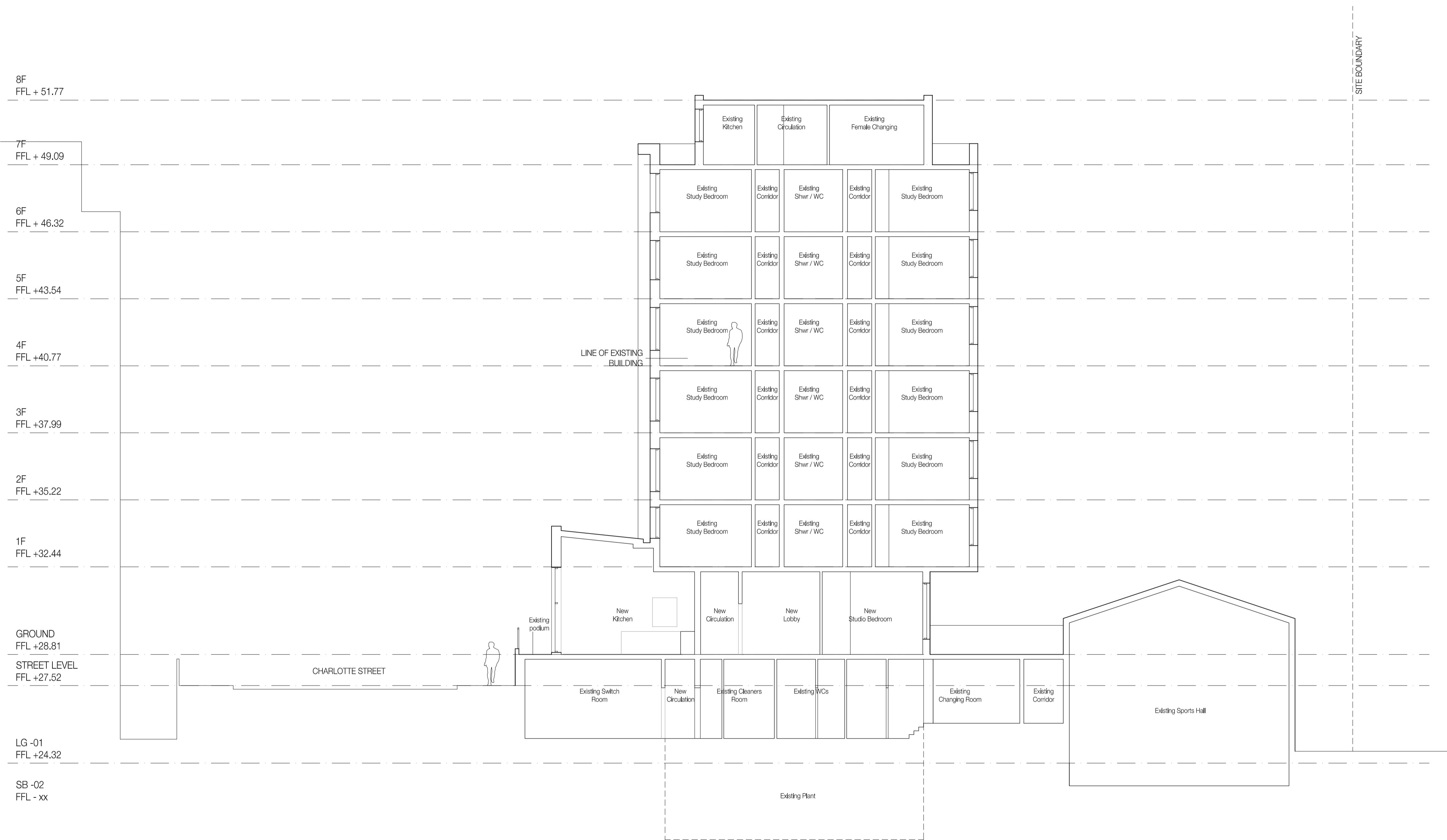
# ASTOR COLLEGE, UCL

## Charlotte Street, W1T 4QB

<b>date</b> July 2014	<b>client</b> UCL	<b>Levitt Bernstein</b> 1 Kingsland Passage London E8 2BB
<b>scale</b> 1:100@A1	<b>drawing</b> Proposed Section A	<b>t: 020 7275 7676</b> <b>f: 020 7275 9348</b> <b>w: levittbernstein.co.uk</b> <b>e: post@levittbernstein.co.uk</b>
<b>drawn</b> FH	<b>checked</b> KS	<b>drawing number</b> 2869 L201
		<b>rev</b> P11

**Levitt Bernstein**

\\badata\KP-PROJECTS\2869 Astor College\CAD\1.0 Live Files\1.1 Models\01 Architectural\01 Section Drawings



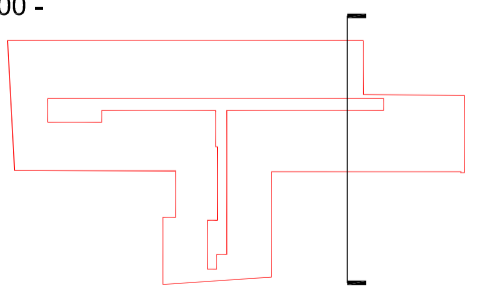
**standard notes**

1. Do not scale this drawing.
2. All dimensions must be checked on site and any discrepancies verified with the architect.
3. Unless shown otherwise, all dimensions are to structural surfaces.

**drawing notes**

THIS IS NOT A CONSTRUCTION DRAWING. IT IS UNSUITABLE FOR THE PURPOSE OF CONSTRUCTION AND MUST ON NO ACCOUNT BE USED AS SUCH.

Key @1:1000 -



**revisions**

P1	06.01.15	First issue
P2	19.01.15	Planning pack to UCL
P3	23.01.15	Issue for Planning

# ASTOR COLLEGE, UCL

## Charlotte Street, W1T 4QB

**date**  
July 2014

**client**  
UCL

**scale**  
1:100@A1

**drawing number**  
2869 L 203

**rev**  
P3

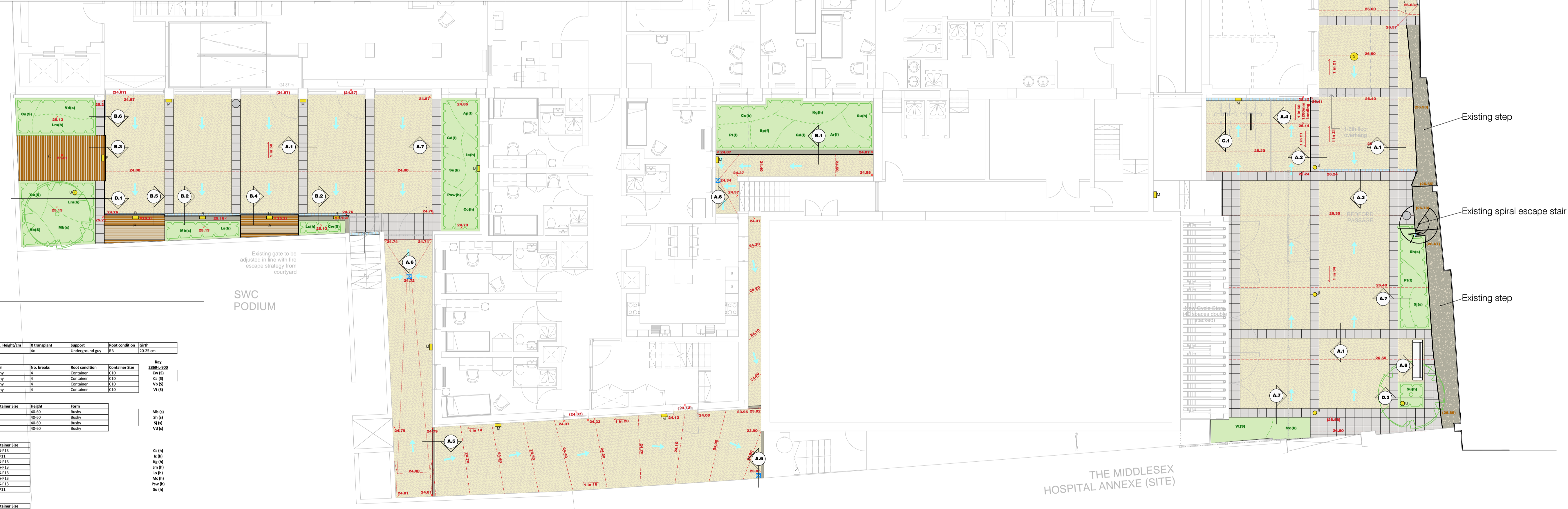
**Levitt Bernstein**  
1 Kingsland Passage  
London  
E8 2BB

t: 020 7275 7676  
f: 020 7275 9348  
w: levittbernstein.co.uk  
e: post@levittbernstein.co.uk

**Levitt Bernstein**

**Key:**

- Bedford Passage building overhang line
- Betula albosinensis (chinese red birch): standard; RB; 20-25 cm girth; 4 x tr - Q31
- Shade tolerant shrubs, herbaceous plants and ferns (refer to planting schedule) - Q31
- FSC certified hardwood timber seat; dimensions: A (2650 x 500 mm), B (2755 x 500 mm), C (2075 x 3960/4045 mm); timber slats 75x40mm with 10 mm gaps; galvanised steel support to in-situ concrete and blockwork; fixings by others - Q50 221
- FSC certified hardwood timber backrest; inclined (45° and 60° respectively) towards the wall to a H circa 600mm; timber slats 75x40mm with 10 mm gaps; galvanised steel support to blockwork; fixed mesh screen to supports at both ends; ; fixings by others - Q50 221
- Paving slabs to match existing on Charlotte St
- 400 x 400 x 50 mm granite slabs; colour: silver grey; sawn to all faces and fine picked finish to all exposed faces; slabs to butt up against each other - Q25
- Addaset Resin Bound Porous Decorative Surfacing by Addagrip (5mm aggregate; Autumn Gold colour); base buildups, mixing and application of the product to follow manufacturer's instructions and recommended specification - Q23 225A
- 150 x 125 mm square concrete channel; colour: natural grey - Q10 110A
- In-situ cast smooth finish high quality 'visual' concrete low-rise (max 500 mm) wall; 45°/20mm chamfered top edges (reinforcement and footing to engineer's detail and specification) - Q50 222
- Aluminium edge restraint (AluExcel AE18RM - 18 x 30 mm) - Q10 200A
- railings and associated secure gates: to architectural plans
- Galvanized steel gully grating (200 x 200 mm) to engineer's specification
- Linear drainage (width 120 mm; galvanized steel grating) - Q10 180A
- Falls (surface water runoff direction)
- Gradients
- Existing levels
- Proposed levels
- Proposed contour lines (each 100 mm)
- Gradient change
- Mid steel 'Sheffield' cycle stand with base plate and holding down bolts to concrete foundation; powder coated finish; RAL colour to match metalwork - Q50 213
- Voss Bs30 seat: steel and hardwood timber bench - Q50 220
- Furnitubes Voss 555: stainless steel litter bin - Q50 240A
- Wall-recessed light (to M&E engineer's specification)
- Wall-mounted light (to M&E engineer's specification)
- Uplighter to tree (to M&E engineer's specification)
- Luminaires fixed to soffit (to M&E engineer's specification)



**2869 - Astor College Plant Schedule**

Tree	Name	Form	Min. Height/cm	x transplants	Support	Root condition	Grth.
1	Betula albosinensis (chinese red birch)	Standard	150	4x	Underground gip	RB	10-25 cm

Medium Shrubs (1.0-2.5 m)	Name	Form	Min. Height/cm	No. breaks	Root condition	Container Size	File
1	Camellia williamsii 'Golden Spangle'	Bushy	100-125	4	Container	C10	2869-000
2	Chamaecyparis 'Golden Spangle'	Bushy	100-125	4	Container	C10	Cs (S)
3	Viburnum x burkwoodii	Bushy	100-125	4	Container	C10	Vs (S)
4	Viburnum sp. 'Vinescentum'	Bushy	100-125	4	Container	C10	Vs (S)

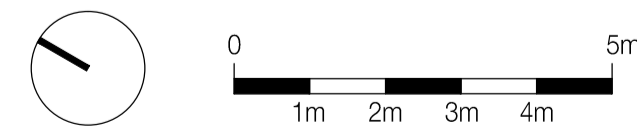
Small Shrubs (1.0-1.5 m)	Name	Density/m sq	Container Size	Height	Form	File
1	Malva sylvestris	4	C5	80-90	Bushy	Ms (S)
2	Campanula medium	4	C5	80-90	Bushy	Ss (S)
3	Campanula medium 'White Nancy'	4	C5	80-90	Bushy	Ss (S)
4	Campanula medium 'White Nancy'	4	C5	80-90	Bushy	Ss (S)
5	Campanula medium 'White Nancy'	4	C5	80-90	Bushy	Ss (S)
6	Campanula medium 'White Nancy'	4	C5	80-90	Bushy	Ss (S)
7	Campanula medium 'White Nancy'	4	C5	80-90	Bushy	Ss (S)
8	Campanula medium 'White Nancy'	4	C5	80-90	Bushy	Ss (S)
9	Campanula medium 'White Nancy'	4	C5	80-90	Bushy	Ss (S)
10	Campanula medium 'White Nancy'	4	C5	80-90	Bushy	Ss (S)

Herbaceous Plants	Name	Density/m sq	Container Size
1	Campanula medium 'White Nancy'	4	C1-P11
2	Campanula medium 'White Nancy'	4	C1-P11
3	Campanula medium 'White Nancy'	4	C1-P11
4	Campanula medium 'White Nancy'	4	C1-P11
5	Campanula medium 'White Nancy'	4	C1-P11
6	Campanula medium 'White Nancy'	4	C1-P11
7	Campanula medium 'White Nancy'	4	C1-P11
8	Campanula medium 'White Nancy'	4	C1-P11
9	Campanula medium 'White Nancy'	4	C1-P11
10	Campanula medium 'White Nancy'	4	C1-P11

Perennials	Name	Density/m sq	Container Size
1	Campanula medium 'White Nancy'	4	C1-P11
2	Campanula medium 'White Nancy'	4	C1-P11
3	Campanula medium 'White Nancy'	4	C1-P11
4	Campanula medium 'White Nancy'	4	C1-P11
5	Campanula medium 'White Nancy'	4	C1-P11
6	Campanula medium 'White Nancy'	4	C1-P11
7	Campanula medium 'White Nancy'	4	C1-P11
8	Campanula medium 'White Nancy'	4	C1-P11
9	Campanula medium 'White Nancy'	4	C1-P11
10	Campanula medium 'White Nancy'	4	C1-P11



**standard notes**

- Do not scale this drawing.
- All dimensions must be checked on site and any discrepancies verified with the architect.
- Unless shown otherwise, all dimensions are to structural surfaces.

**drawing notes**

THIS IS NOT A CONSTRUCTION DRAWING. IT IS UNSUITABLE FOR THE PURPOSE OF CONSTRUCTION AND MUST ON NO ACCOUNT BE USED AS SUCH.

**revisions**

Rev	Date	Description
P1	19.01.15	Planning pack issue to UCL
P2	23.01.15	Issue for Planning
P3	04.02.15	Issue for Stage D
P4	14.07.15	Issue for Stage 3
P5	22.12.15	Updated Design
P6	15.01.16	Issued for Costing
P7	19.01.16	Issued for Costing
T1	19.02.16	Tender Issue

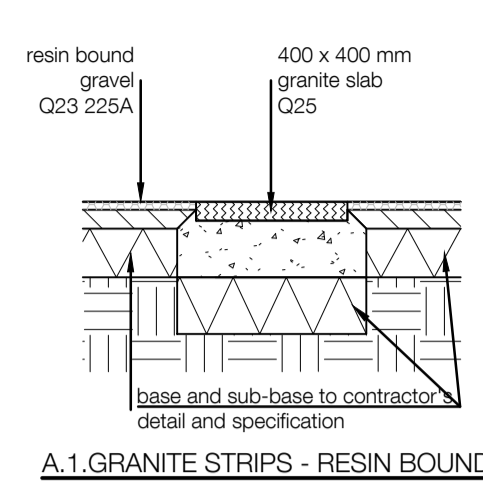
# ASTOR COLLEGE, UCL

## Charlotte Street, W1T 4QB

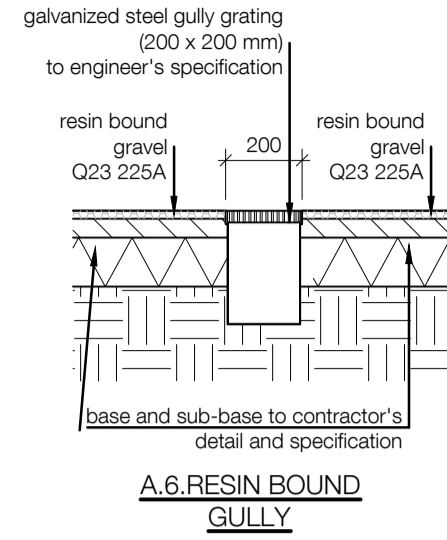
**date** June 2014  
**client** UCL  
**scale** 1:100@A1  
**drawing** Proposed Landscape Plan  
**drawn** GPM  
**checked** GPM  
**drawing number** 2869 L900  
**rev** T1

**Levitt Bernstein**  
 1 Kingsland Passage  
 London  
 E8 2BB  
 t: 020 7275 7676  
 f: 020 7275 9348  
 w: levittbernstein.co.uk  
 e: post@levittbernstein.co.uk

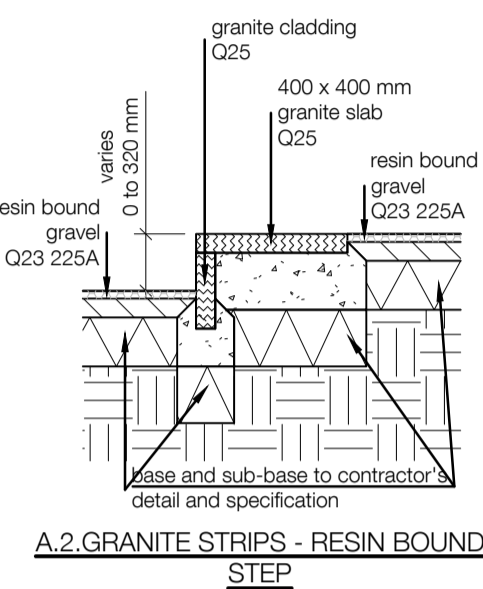
## A. SURFACING



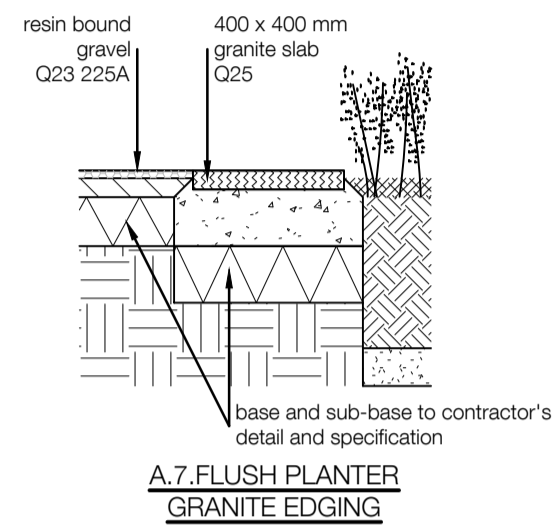
A.1 GRANITE STRIPS - RESIN BOUND



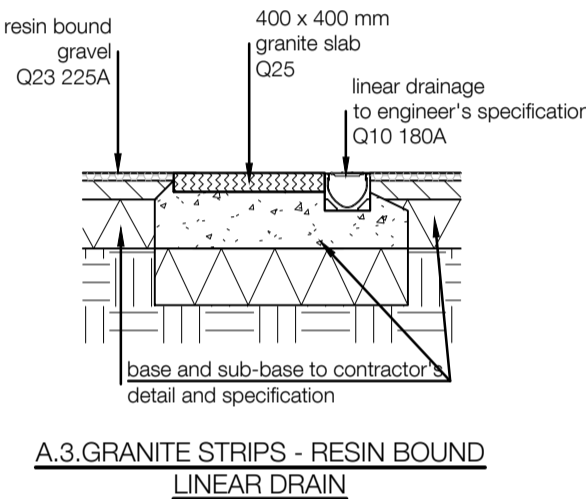
A.6 RESIN BOUND GULLY



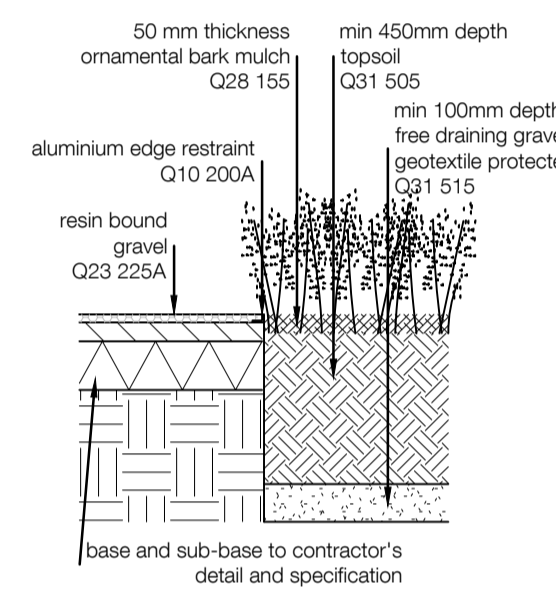
A.2 GRANITE STRIPS - RESIN BOUND STEP



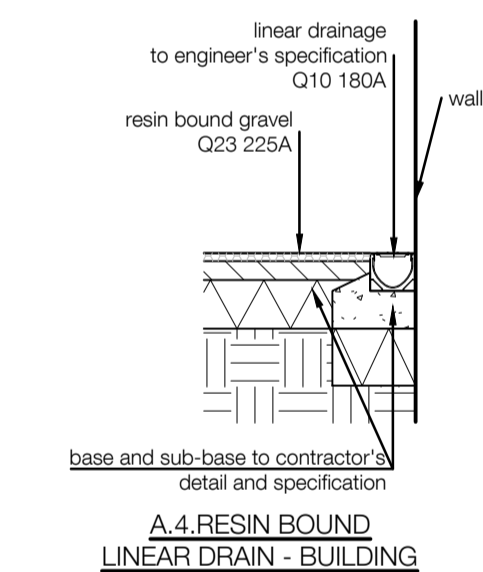
A.7 FLUSH PLANTER GRANITE EDGING



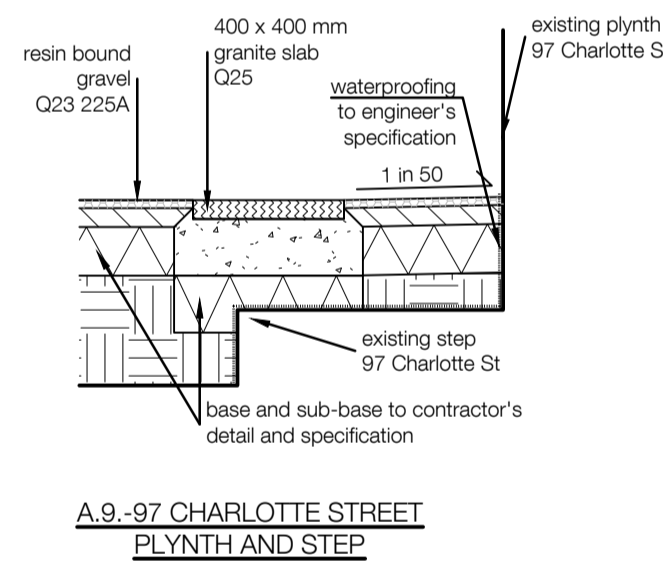
A.3 GRANITE STRIPS - RESIN BOUND LINEAR DRAIN



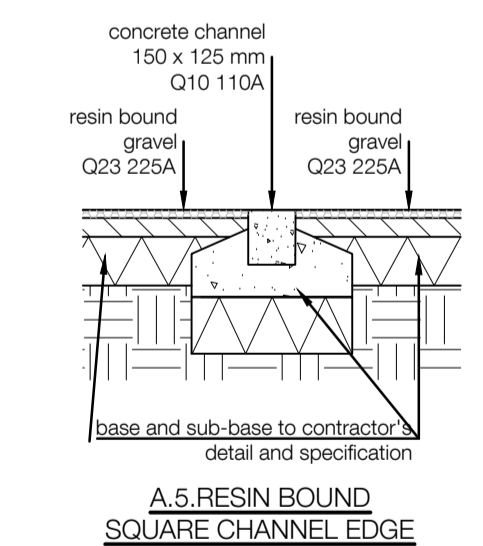
A.8 RESIN BOUND / PLANTER ALUMINIUM EDGING



A.4 RESIN BOUND LINEAR DRAIN - BUILDING

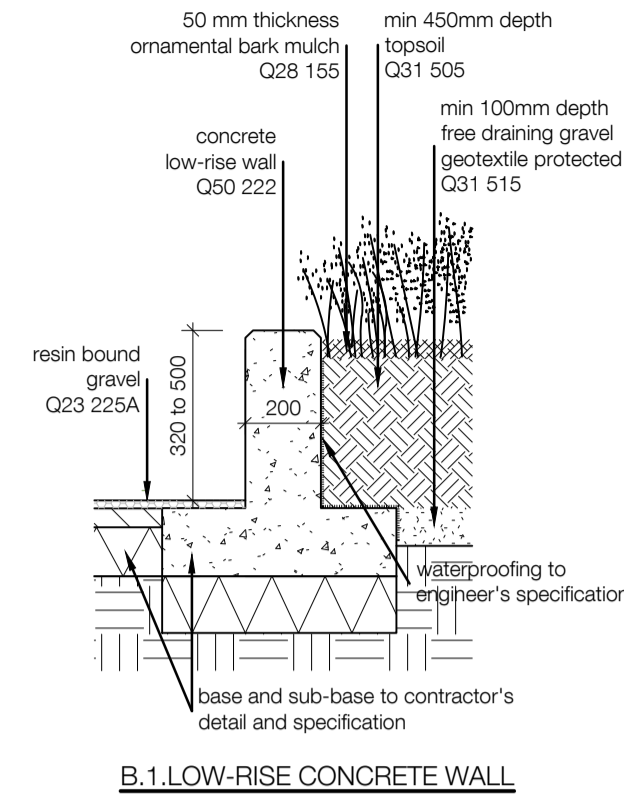


A.9 - 97 CHARLOTTE STREET PLYNTH AND STEP

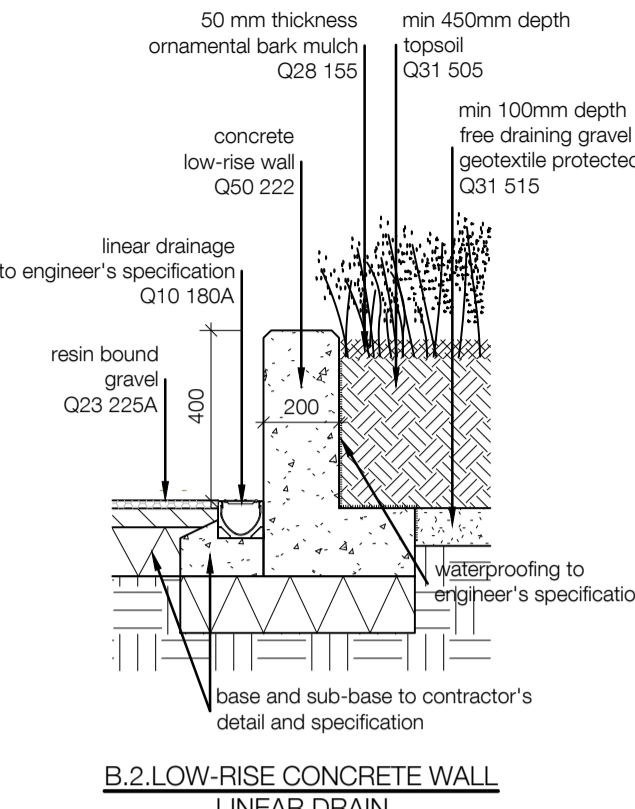


A.5 RESIN BOUND SQUARE CHANNEL EDGE

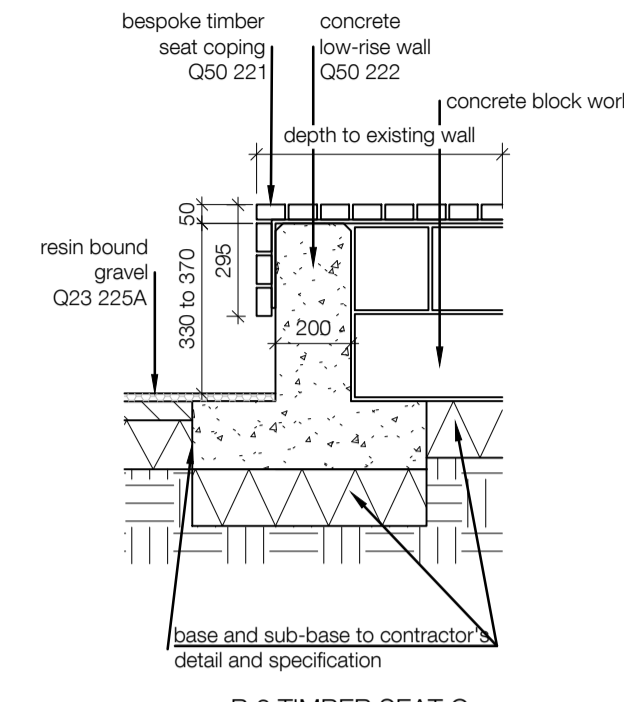
## B. RAISED ELEMENTS



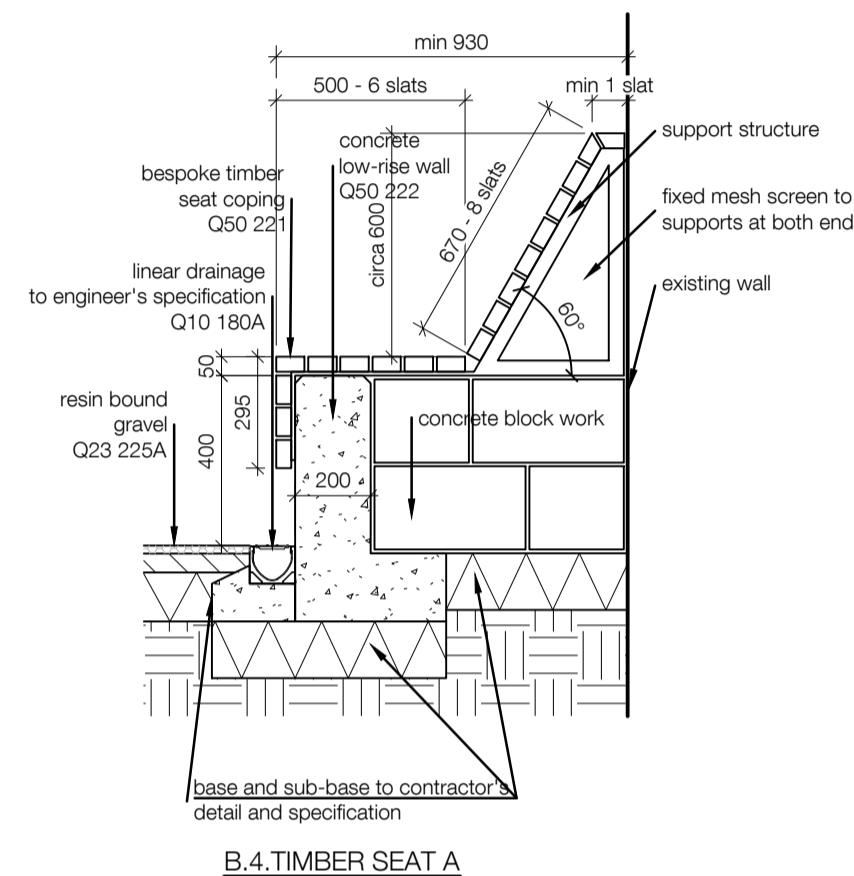
B.1 LOW-RISE CONCRETE WALL



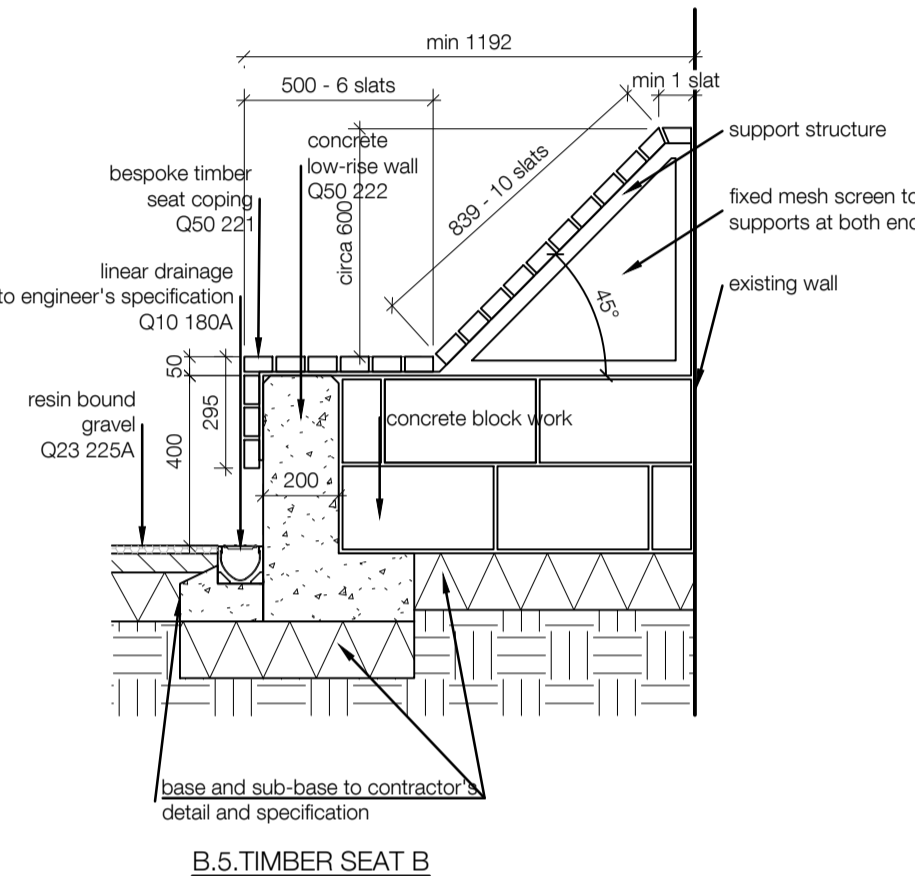
B.2 LOW-RISE CONCRETE WALL LINEAR DRAIN



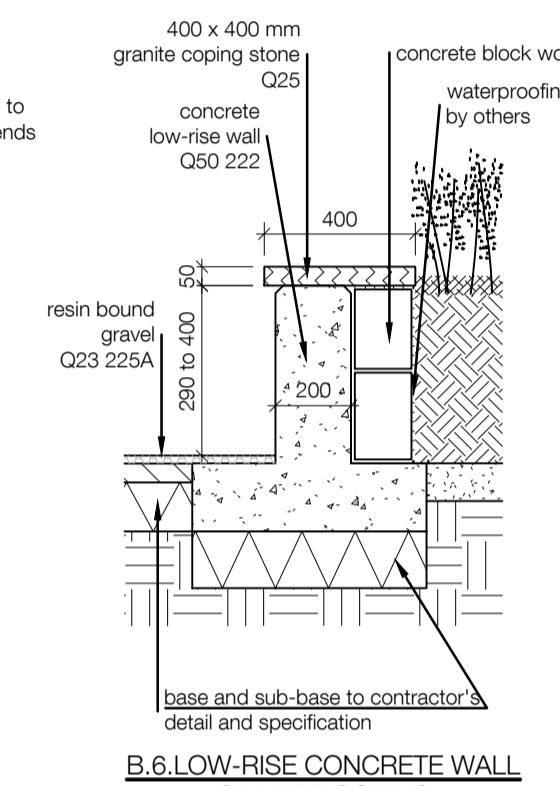
B.3 TIMBER SEAT C



B.4 TIMBER SEAT A

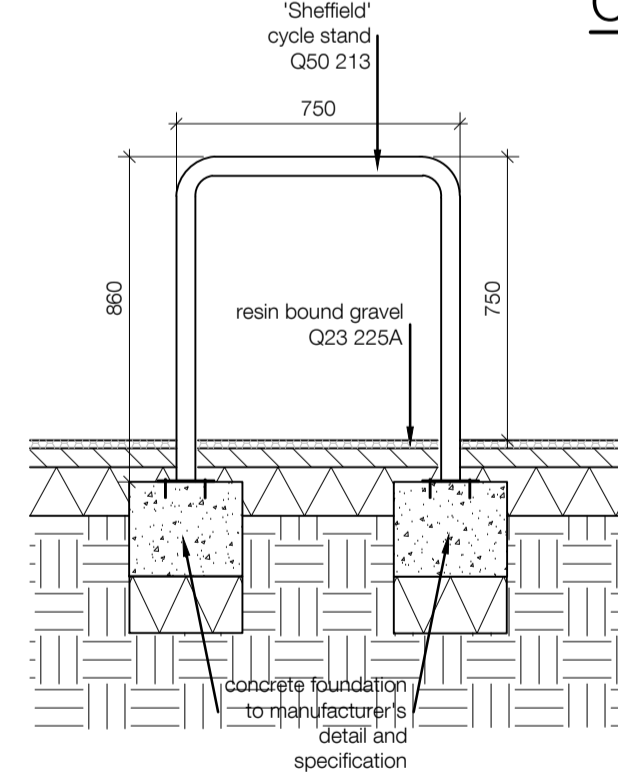


B.5 TIMBER SEAT B

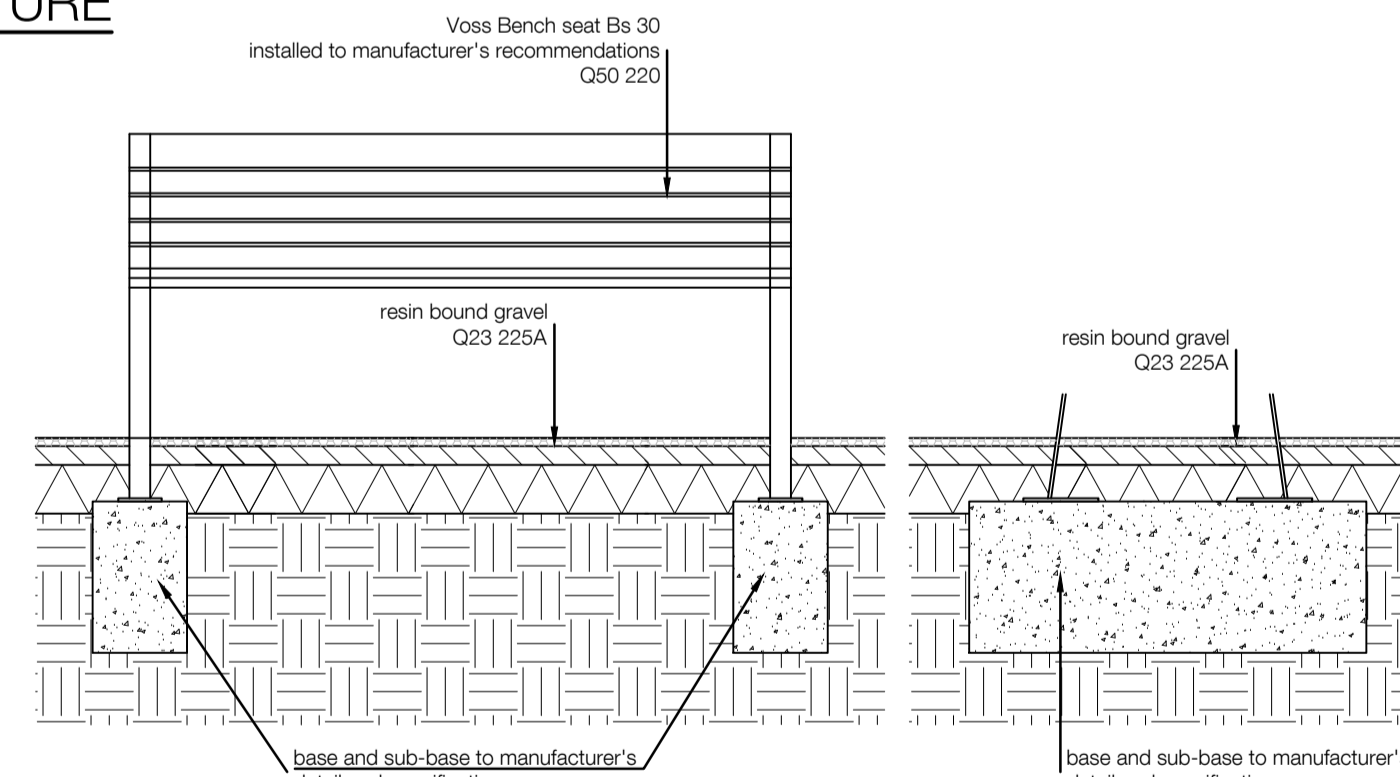


B.6 LOW-RISE CONCRETE WALL GRANITE COPING

## C. FURNITURE

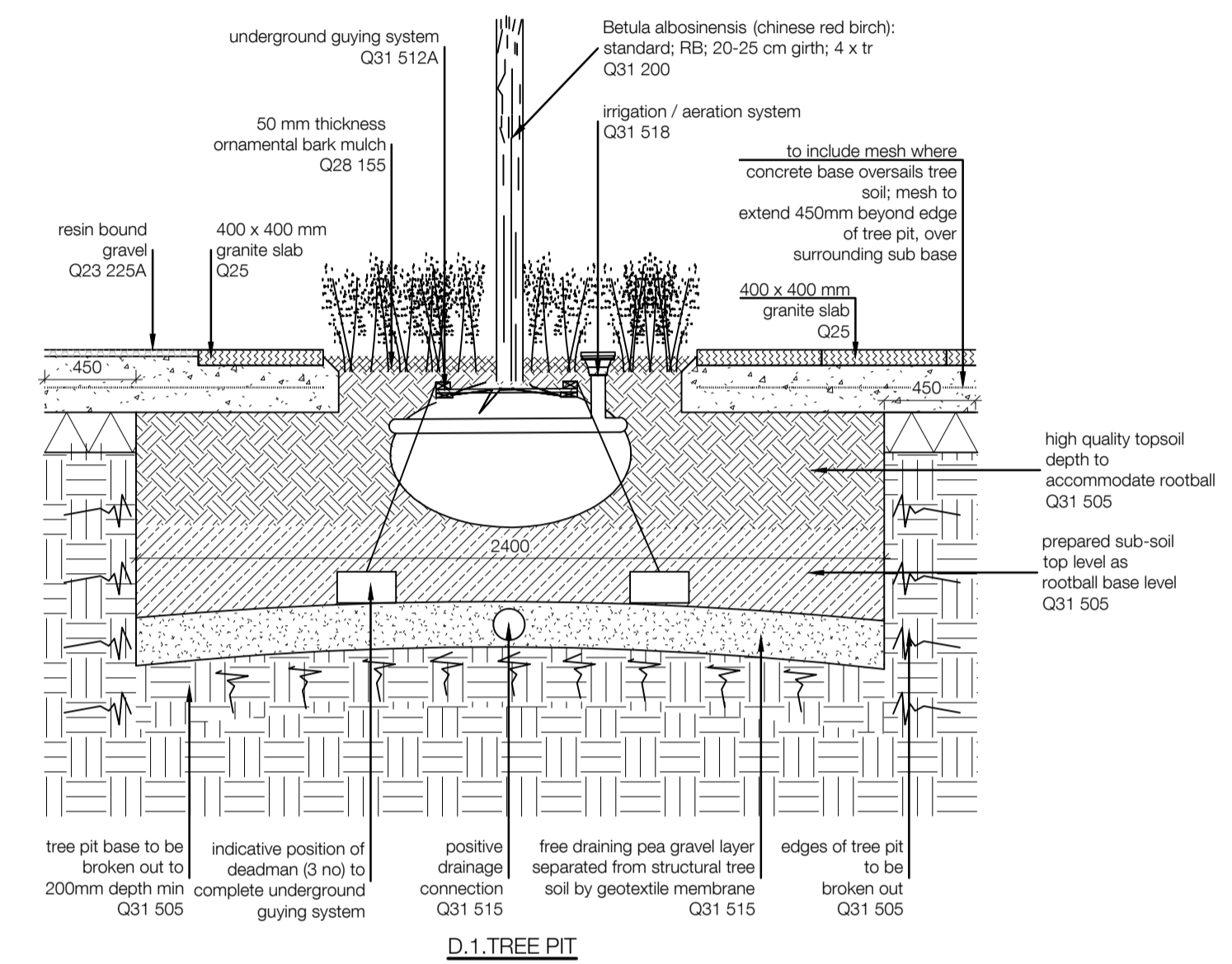


C.1 SHEFFIELD CYCLE STAND ON RESIN BOUND

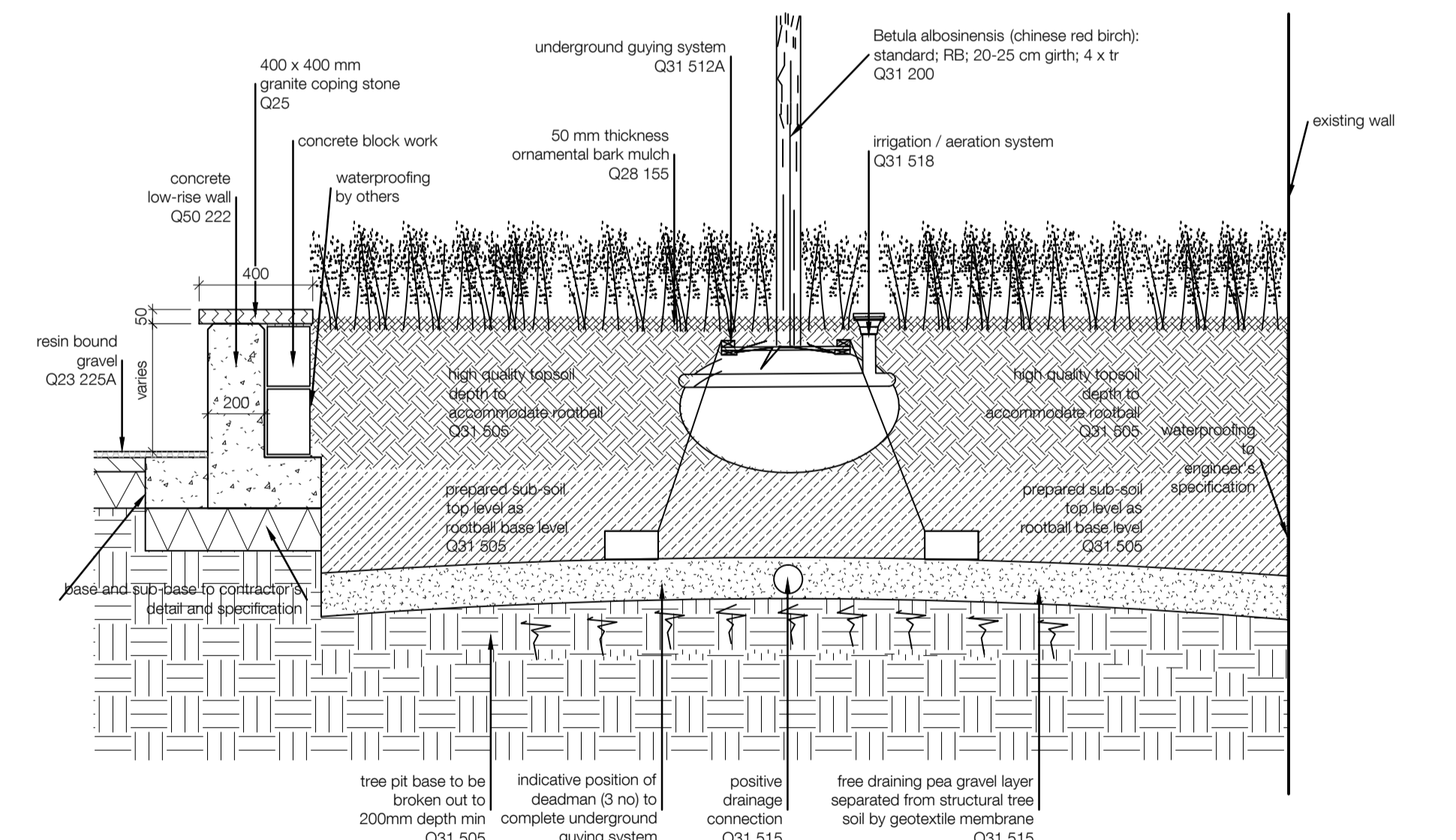


C.2 BENCH BEDFORD PASSAGE

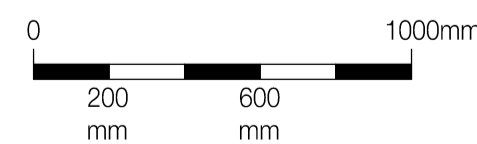
## D. TREES / PLANTERS



D.1 TREE PIT



D.2 TREE IN RAISED PLANTER



### standard notes

1. Do not scale this drawing.
2. All dimensions must be checked on site and any discrepancies verified with the architect.
3. Unless shown otherwise, all dimensions are to structural surfaces.

THIS IS NOT A CONSTRUCTION DRAWING. IT IS UNSUITABLE FOR THE PURPOSE OF CONSTRUCTION AND MUST ON NO ACCOUNT BE USED AS SUCH.

### drawing notes

### revisions

rev	date	description
P1	15.01.16	Issued for Costing
P2	23.01.16	Issued for Costing
T1	19.02.16	Tender Issue

**ASTOR COLLEGE, UCL**  
Charlotte Street, W1T 4QB

**date** June 2014  
**client** UCL  
**scale** 1:20@A1  
**drawn** GPM  
**checked** GPM  
**drawing number** 2869 L901  
**rev** T1

**Levitt Bernstein**  
1 Kingsland Passage  
London  
E8 2BB

**t:** 020 7275 7676  
**f:** 020 7275 9348  
**w:** levittbernstein.co.uk  
**e:** post@levittbernstein.co.uk