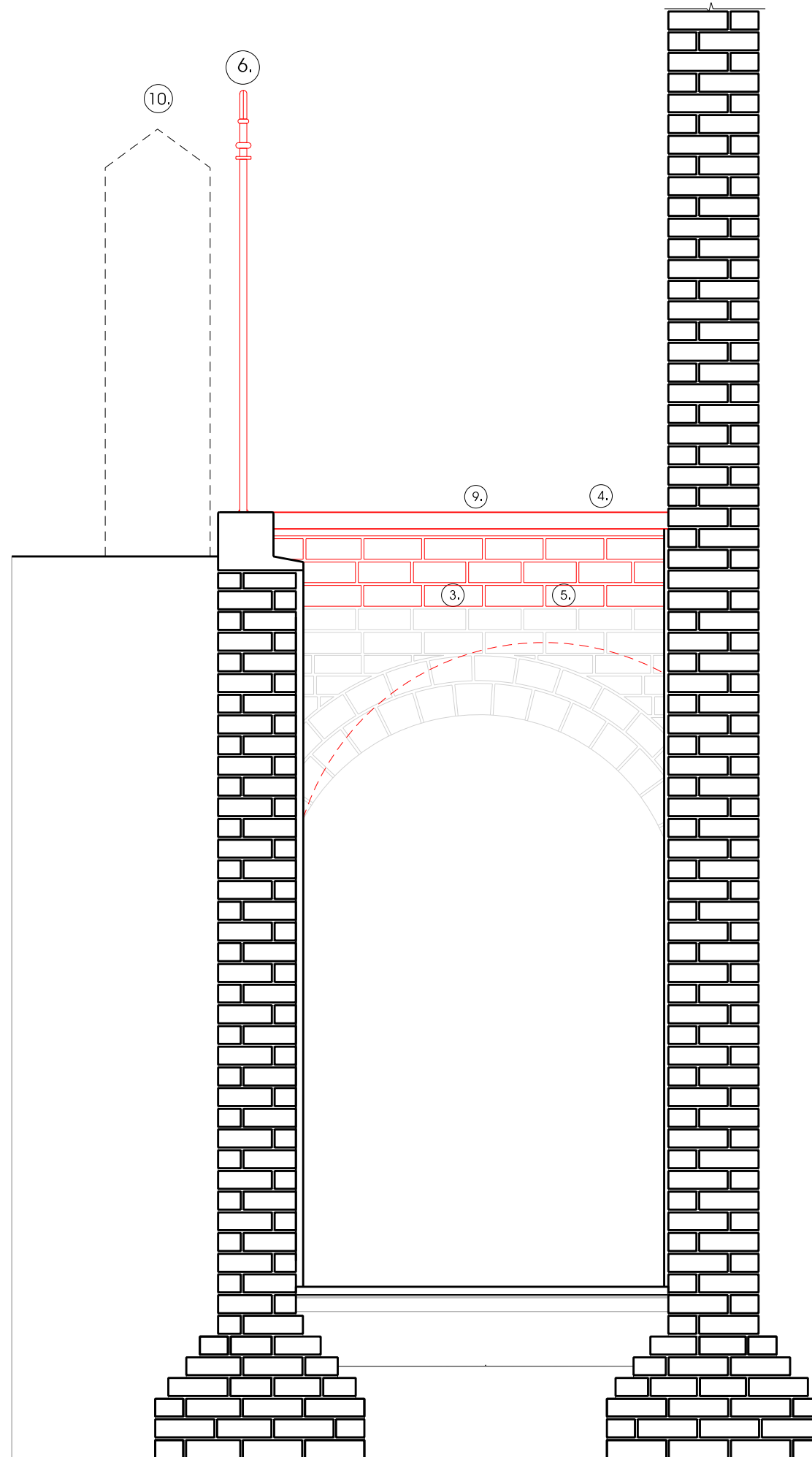


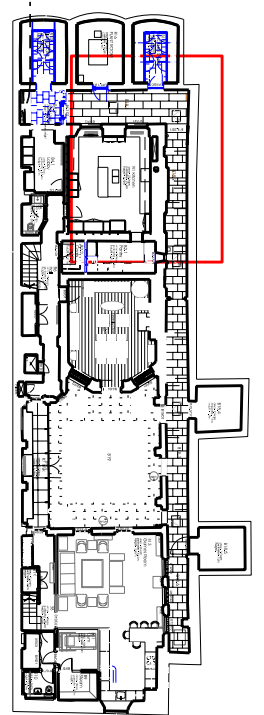
1 SECTION "BB" AS EXISTING
scale 1:10



2 SECTION "CC" AS EXISTING
scale 1:10

Strip out notes:

1. Strip out metal staircase in its entirety
2. Remove stone bottom step
3. Strip out quadrant arch supporting the landing but leave the archway in situ
4. Remove and retain copingstone on archway
5. Strip out top two courses of brick on archway
6. Remove and retain gate and connection support for re-fit in new location
7. Strip out iron railings
8. retain downpipe that runs through the existing landing and archway
9. on second and third archway strip out coping stone and top 3 courses of brick below
10. Strip out door leaf and frame
11. Telecom cabinet



DATE	REVISION	COMMENT	AUTHOR	AUTHORISED
28.11.16		Planning/LBC		

53 BEDFORD SQUARE

TITLE
EXISTING BASEMENT STAIR CROSS
SECTION STRIP OUT

DWG NO 53BS_SK 79_02 SCALE 1:10@ A1
DATE NOV 2016

H:\53 Bedford Square\Survey\53BS_SK_160205_win\size mread.dgn
PETER INSKIP + PETER JENKINS ARCHITECTS LTD
19 - 23 WHITE LION STREET LONDON, N1 9PD
TELEPHONE 020 78334002 FAX 020 72785343