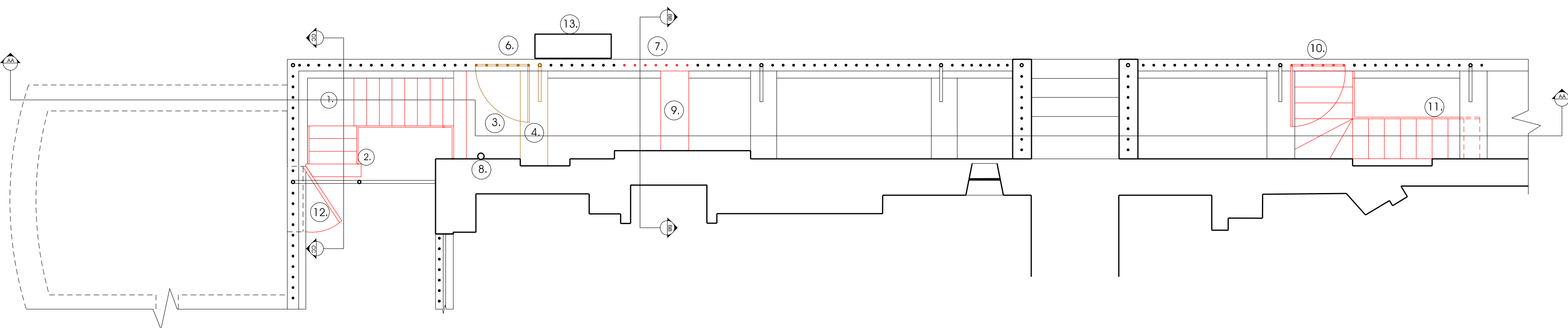
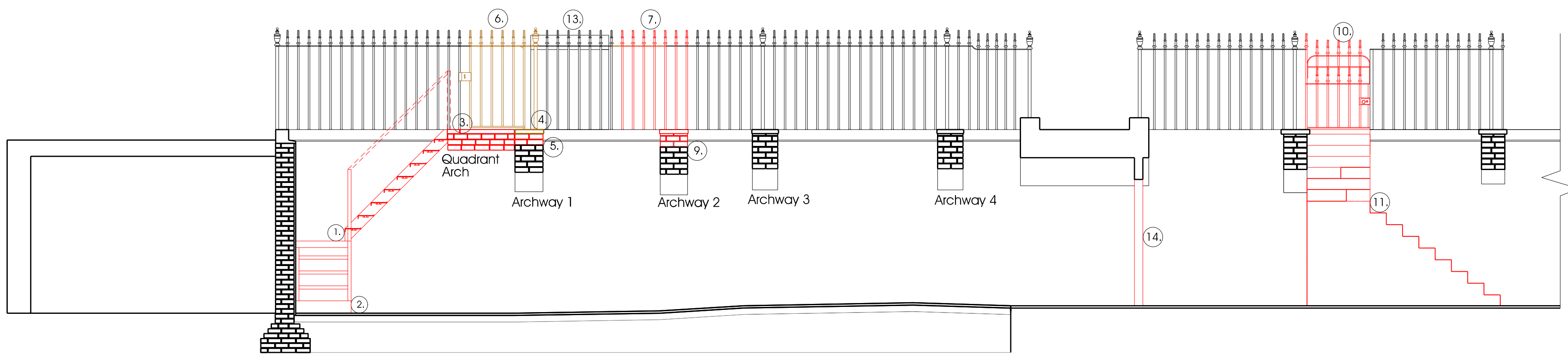


Strip out notes:

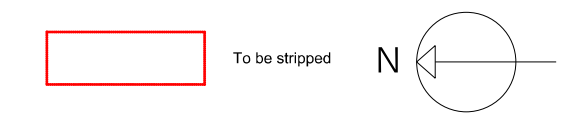
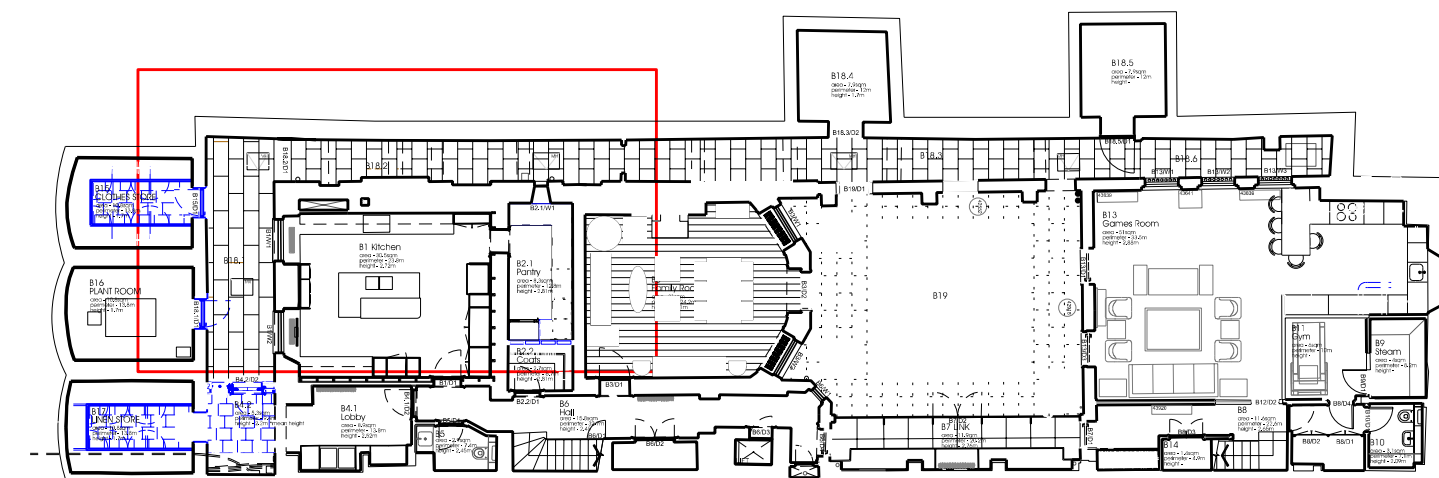
1. Strip out metal staircase in its entirety
2. Remove stone bottom step
3. Strip out quadrant archway supporting the landing but leave the adjacent archway next to it
4. Remove and retain coping stone on archway
5. Strip out top two courses of brick on archway
6. Remove and retain gate and support for re-fit in new location
7. Strip out iron railings and set aside in relocation
8. retain downpipe that runs through the existing landing and archway
9. on second archway strip out coping stone and top 3 courses of brick below
10. strip out iron gate
11. strip out stone staircase and iron railings
12. strip out door leaf and frame
13. telecom cabinet
14. Strip out door frame



1 GROUND FLOOR PLAN AS EXISTING  
Scale 1:50



2 SECTION "AA" AS EXISTING  
Scale 1:50



DATE	REVISION	COMMENT	AUTHOR	AUTHORISED
28.11.16		Planning/LBC	LW	

**53 BEDFORD SQUARE**  
 TITLE  
 EXISTING BASEMENT STAIR TO  
 FRONT AREA STRIP OUT  
 DWG NO 53BS\_SK 079 SCALE 1:50 @A2  
 DATE NOV 2016  
 H:\53 Bedford Square\Sketches\34.53BS SK 079 - stair\53 BS SK 079-80 NOV 2016- stair.dgn  
 PETER INSKIP + PETER JENKINS ARCHITECTS LTD  
 19 - 23 WHITE LION STREET LONDON N1 9PD  
 TELEPHONE 020 78334002 FAX 020 72785343