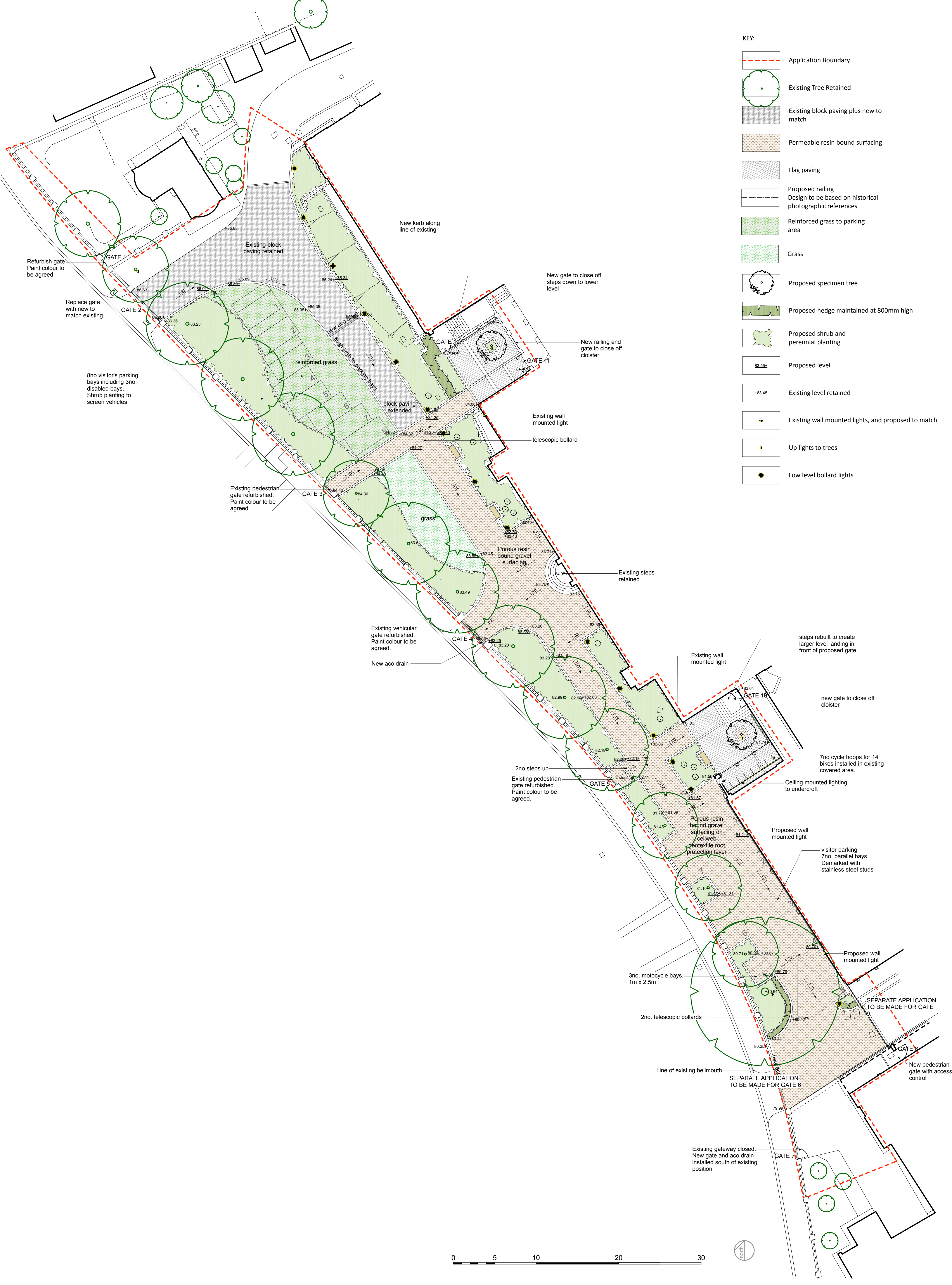


- KEY:
- Application Boundary
 - Existing Tree Retained
 - Existing block paving plus new to match
 - Permeable resin bound surfacing
 - Flag paving
 - Proposed railing
Design to be based on historical photographic references
 - Reinforced grass to parking area
 - Grass
 - Proposed specimen tree
 - Proposed hedge maintained at 800mm high
 - Proposed shrub and perennial planting
 - Proposed level
 - Existing level retained
 - Existing wall mounted lights, and proposed to match
 - Up lights to trees
 - Low level bollard lights



Rev	Date	Rev	Date
A	16.06.16	C	30.09.16
B	29.09.16	D	10.11.16

Note on Gate 9 changed & status changed.
 Note on Gate 6. Gate withdrawn from application on advise of Camden.
 Note on Gate 9 changed & status changed.
 Note on shrub planting to screen added. Gate 9 changed from cantilever to inward opening.

University College School - Senior Branch Frognal Access and Boundary Improvements Masterplan		Katy Stata Landscape Architecture 34 Warwick Road ENS SEH m : 07740702756 katystata@btinternet.com	
Project Number	Drawing Number	Revision	Date
077	L10	F	May 16
Scale	1:200 @ A1		