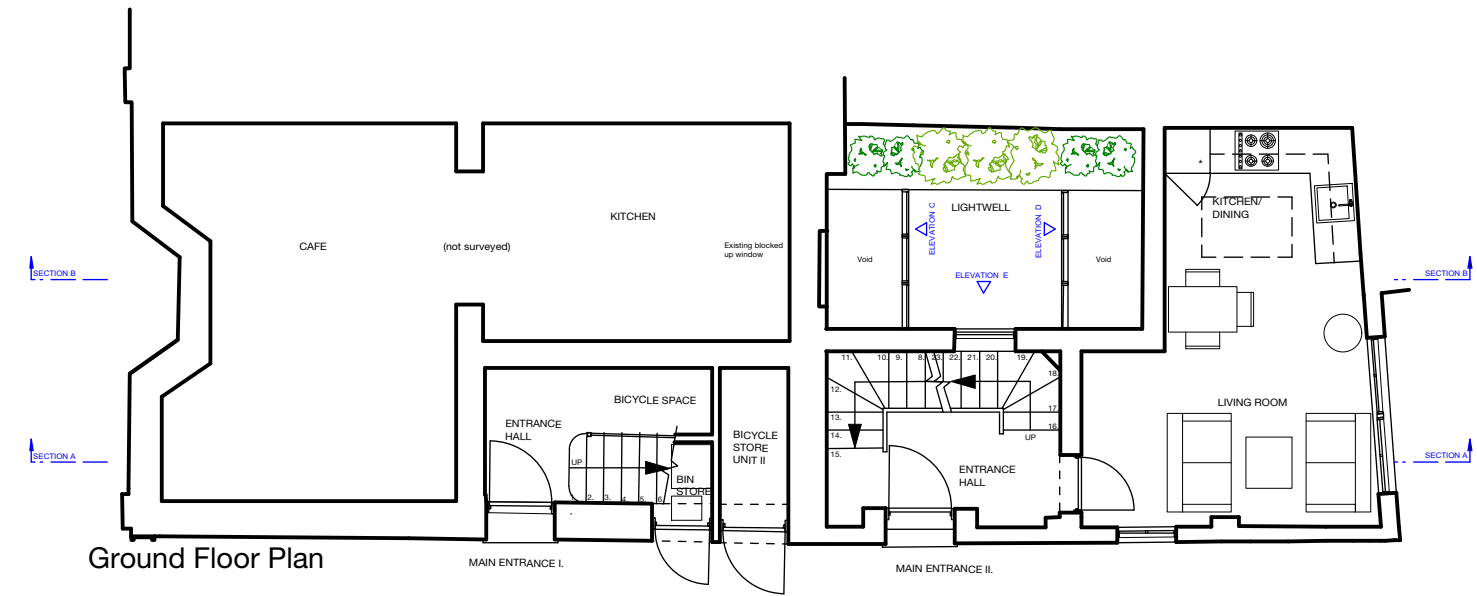
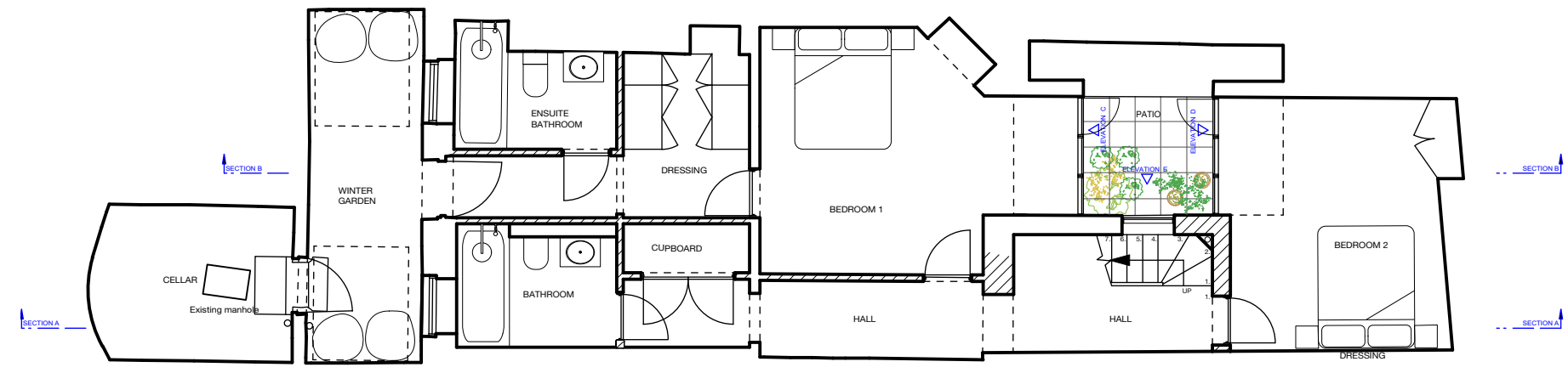


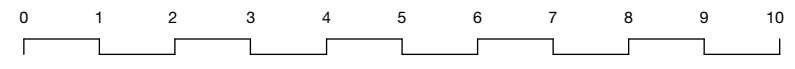
First Floor Plan



Ground Floor Plan



Basement Plan



GENERAL NOTES

Do not scale from this drawing. All dimensions, levels, fixings and weatherings to be checked on site. This drawing must not be used for land transfer purposes, or for construction purposes unless accompanied by an Architect's Instruction.

This drawing is the copyright of Haines Phillips Architects.

REVISIONS

REV	DATE	NOTES
D	30.11.15	Basement and Ground Floor glazing amended.
E	06.06.16	Basement layout amended.
F	04.08.16	Existing manhole added to basement layout.
G	01.09.16	Layouts amended with bicycle store moved to Ground Floor level. Obscured glass privacy screen added to 1st Floor balcony.
H	05.09.16	Bicycle stores amended in accordance with Transport Officer's comments.
J	20.10.16	GF Plan amended in accordance with Planning Officer's comments. Corten balustrade replaces glass balustrade at 1F level.



**Tankerton Works**  
 12 Argyle Walk  
 London WC1H 8HA  
 t 020 7833 9324  
 f 020 7837 2864  
 e office@hainesphillips.co.uk

JOB TITLE  
**1 Guilford Street**  
**London WC1N 1DR**

DRAWING TITLE  
**As Proposed**  
**Basement, Ground**  
**and First Floor Plan**

DRAWN DATE  
**AM SEPT 2015**  
 SCALE  
**1:100 @ A3**  
 JOB NR DRAWING NR REV  
**3909 PL 09 J**