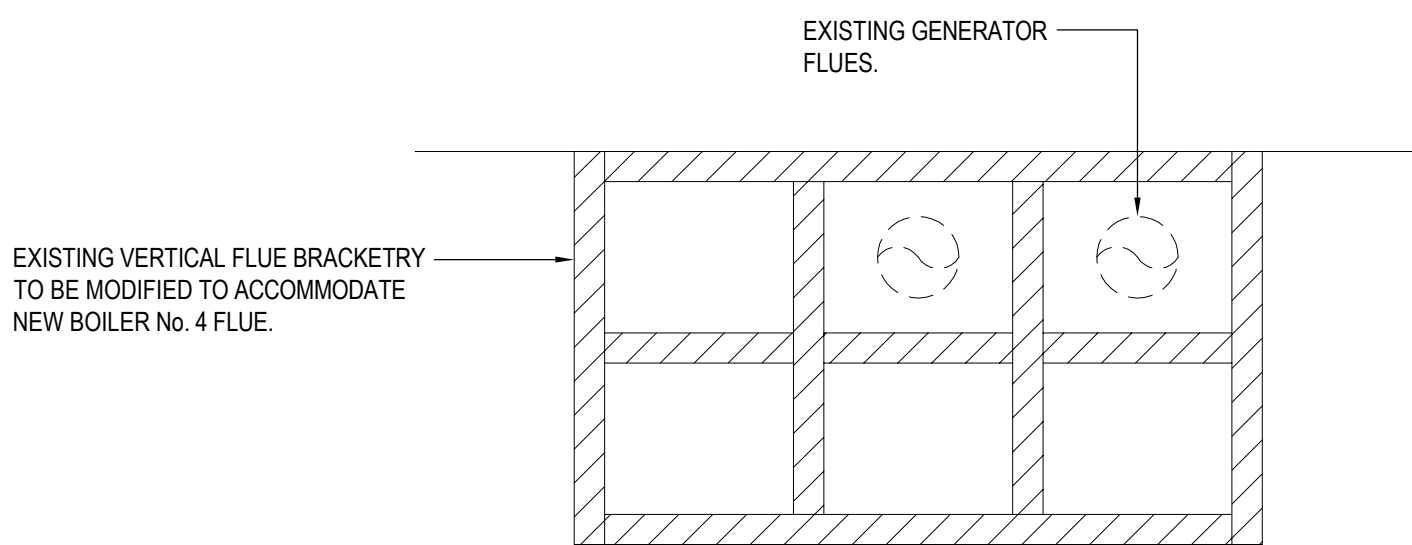
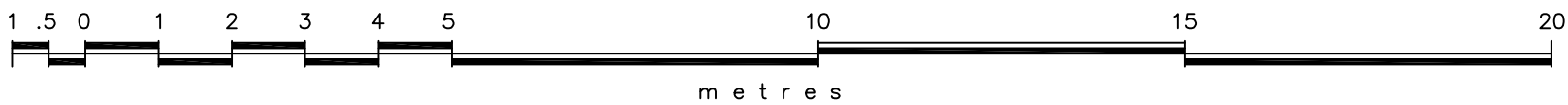
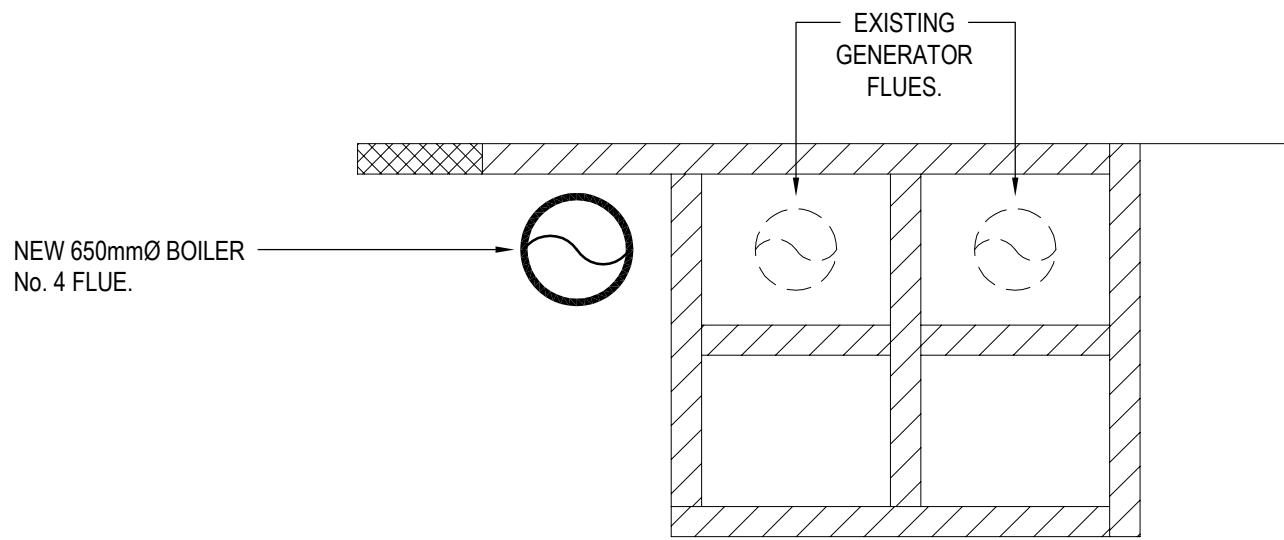


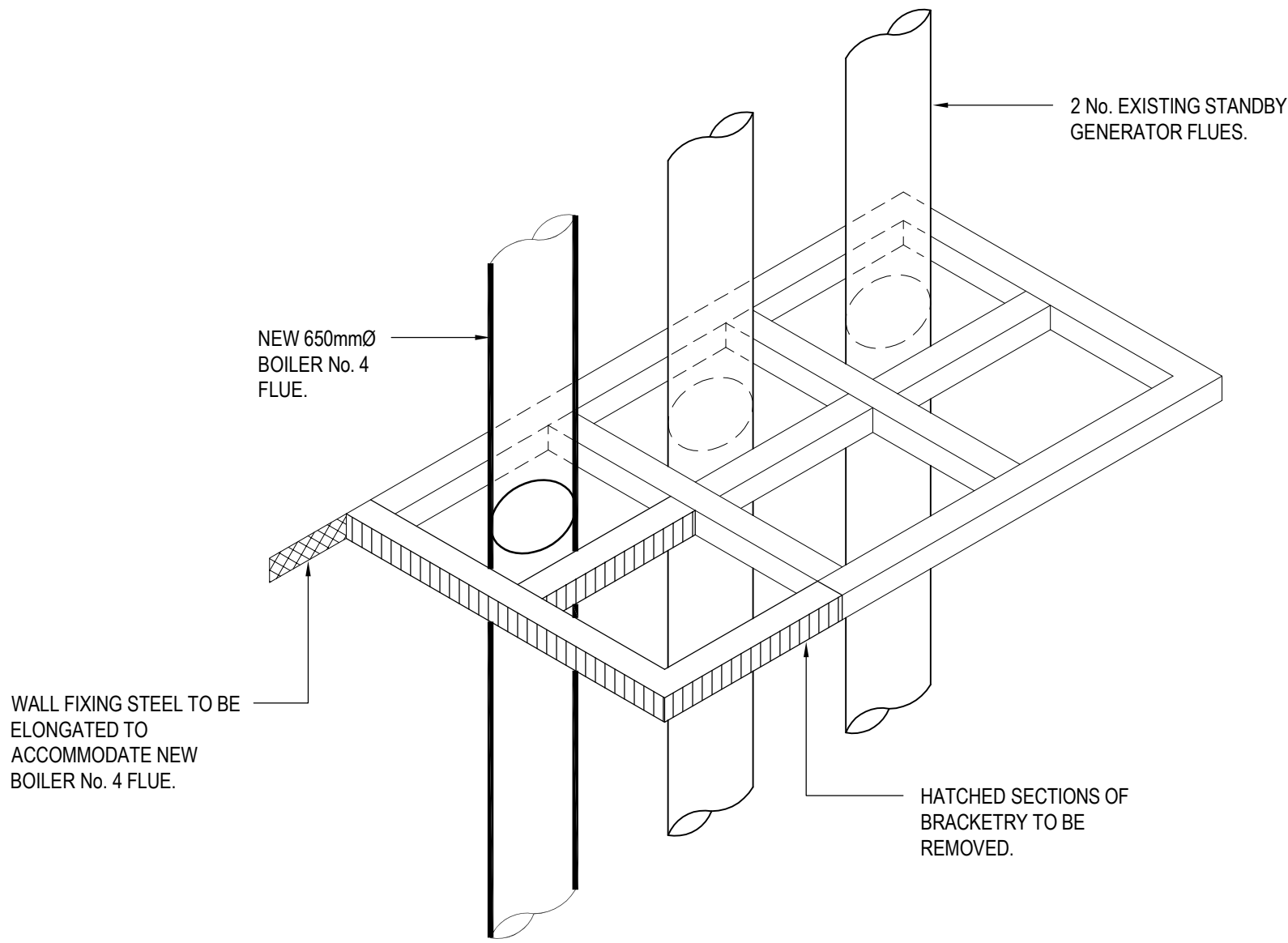
SECTIONAL VIEW OF NEW BOILER & FLUE ROUTE
(1:100)



DETAIL OF EXISTING GENERATOR FLUE BRACKETRY
(N.T.S.)



DETAIL OF PROPOSED GENERATOR FLUE BRACKETRY
MODIFICATION TO ACCOMMODATE NEW BOILER No. 4 FLUE
(N.T.S.)



ISOMETRIC DETAIL OF EXISTING EXTERNAL
VERTICAL BRACKETRY TO BE MODIFIED
(N.T.S.)

© Buro Happold Limited or its group companies. All Rights reserved. Buro Happold and its group companies assert (unless otherwise agreed in writing) their rights under s.17 to 18 of the Copyright, Designs and Patents Act 1988.			
DO NOT SCALE THIS DRAWING.			
HEALTH AND SAFETY INFORMATION			
IN ADDITION TO THE HAZARDS/RISKS NORMALLY ASSOCIATED WITH THE TYPES OF WORK DETAILED ON THIS DRAWING, NOTE THE FOLLOWING CONSTRUCTION.			
MAINTENANCE/CLEANING/OPERATION.			
DECOMMISSIONING/DEMOLITION.			
Notes			
STANDARD NOTES			
1. THIS DRAWING IS TO BE READ IN CONJUNCTION WITH ALL OTHER DISCIPLINES, DRAWINGS, SCHEDULES AND SPECIFICATIONS, LEGENDS AND STANDARD DETAILS.			
2. THIS DRAWING IS COPYRIGHT AND SHALL NOT BE REPRODUCED WITHOUT PERMISSION.			
3. DIMENSIONS GOVERN ON ALL DRAWINGS AND DETAILS. SHOULD ANY DISCREPANCIES BE FOUND WITH THIS DRAWING AND ANY ASSOCIATED DRAWINGS OR SPECIFICATIONS THIS SHOULD BE BROUGHT TO THE ATTENTION OF THE M&E BUILDING SERVICES CONSULTANT IMMEDIATELY.			
4. UNLESS OTHERWISE STATED ALL DIMENSIONS ARE IN MILLIMETRES.			
5. DO NOT SCALE FROM THIS DRAWING.			
6. DIMENSIONS TO BE CHECKED ON SITE BEFORE ANY WORK IS PUT IN HAND OR PREFABRICATED.			
7. THIS DRAWING SHOULD ONLY BE USED FOR THE SPECIFIC SERVICES INTENDED.			
8. THIS DRAWING SHOWS THE DESIGN INTENT ONLY. THE CONTRACTOR SHALL BE RESPONSIBLE FOR THE FULL CO-ORDINATION OF THE SERVICES INDICATED ON THIS AND ALL OTHER SERVICES DRAWINGS.			
9. FINAL ACCESS AND SETTING OUT OF SERVICES SHALL BE AGREED BETWEEN THE ARCHITECT AND THE CONTRACTOR.			
10. THE PROJECT NOTES ARE TO BE READ IN CONJUNCTION WITH ALL RELEVANT TECHNICAL SPECIFICATIONS.			
11. WHERE MECHANICAL SERVICES PASS THROUGH FIRE COMPARTMENTATION CEILING VOIDS, FLOOR VOIDS AND STRUCTURAL WALLS THE CONTRACTOR SHALL SLEEVE/SEAL THE OPENING WITH AN ACOUSTIC AND FIRE SEALANT APPROVED BY THE ARCHITECT.			
12. THE CONTRACTOR SHALL REFER TO THE ARCHITECT'S DRAWINGS FOR DETAILS OF FIRE COMPARTMENTATION.			

PARTICULAR NOTES:			
A.	NEW BOILER No. 4 TO BE FILLED WITH TREATED WATER PRIOR TO OPENING ON-LINE WITH EXISTING BOILERS.		
B.	EXISTING 8 No. FLUE BRACKETS TO BE MODIFIED TO ACCOMMODATE NEW 650mmØ BOILER FLUE.		

00 TENDER ISSUE	14/10/16	RG	PW
Rev	Description	Date	Drm

TENDER	
Status of drawing	

BUROHAPPOLD ENGINEERING	
Camden Mill Lower Bristol Road Bath BA2 3DQ UK	
Tel: +44 (0)1225 320600 Fax: +44 (0)870 787 4148 Email: 035715@burohappold.com Web: www.burohappold.com	
Architect	
Project British Museum	
Drg Title North East Boiler Room New Boiler No. 4 Section and Flue Mounting Bracket Details	
Scales@A1 1:100 & N.T.S.	
Drawn by RG	Job No. 035715
Drawing No.	Checked by PW
	Date OCT 2016
Revision	
BMBR-BHE-XX-XX-DR-M-0003	
00	