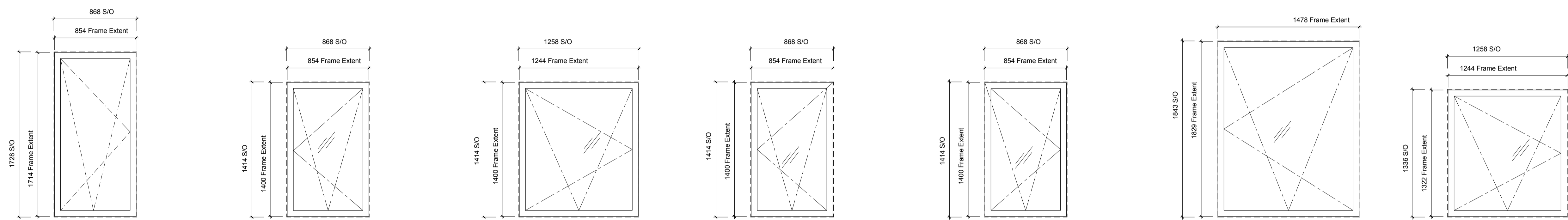
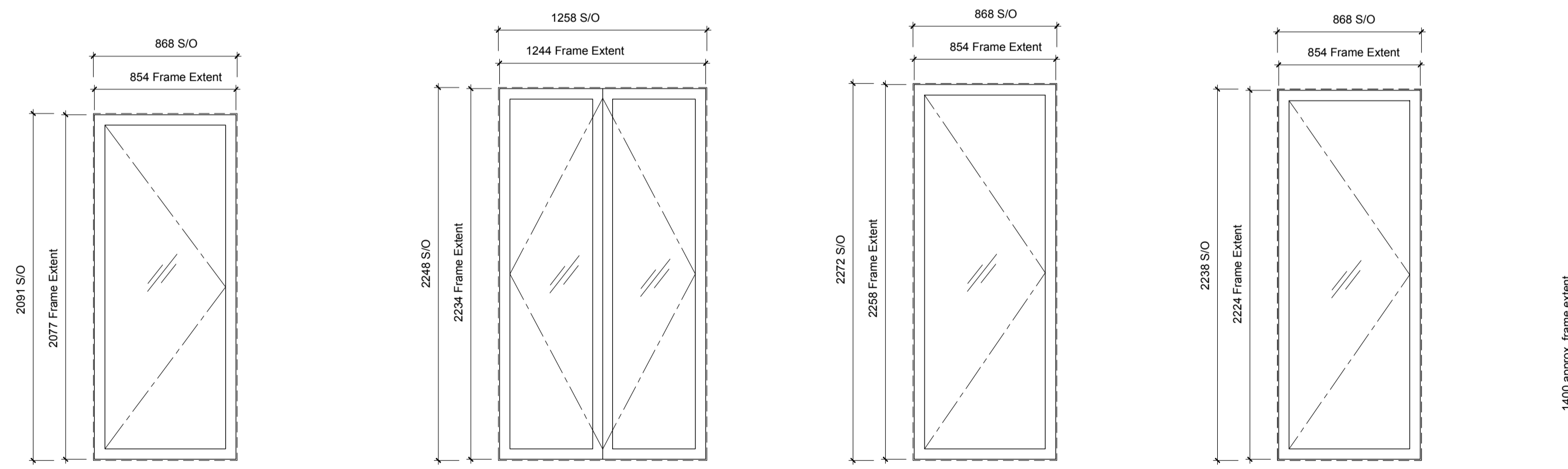


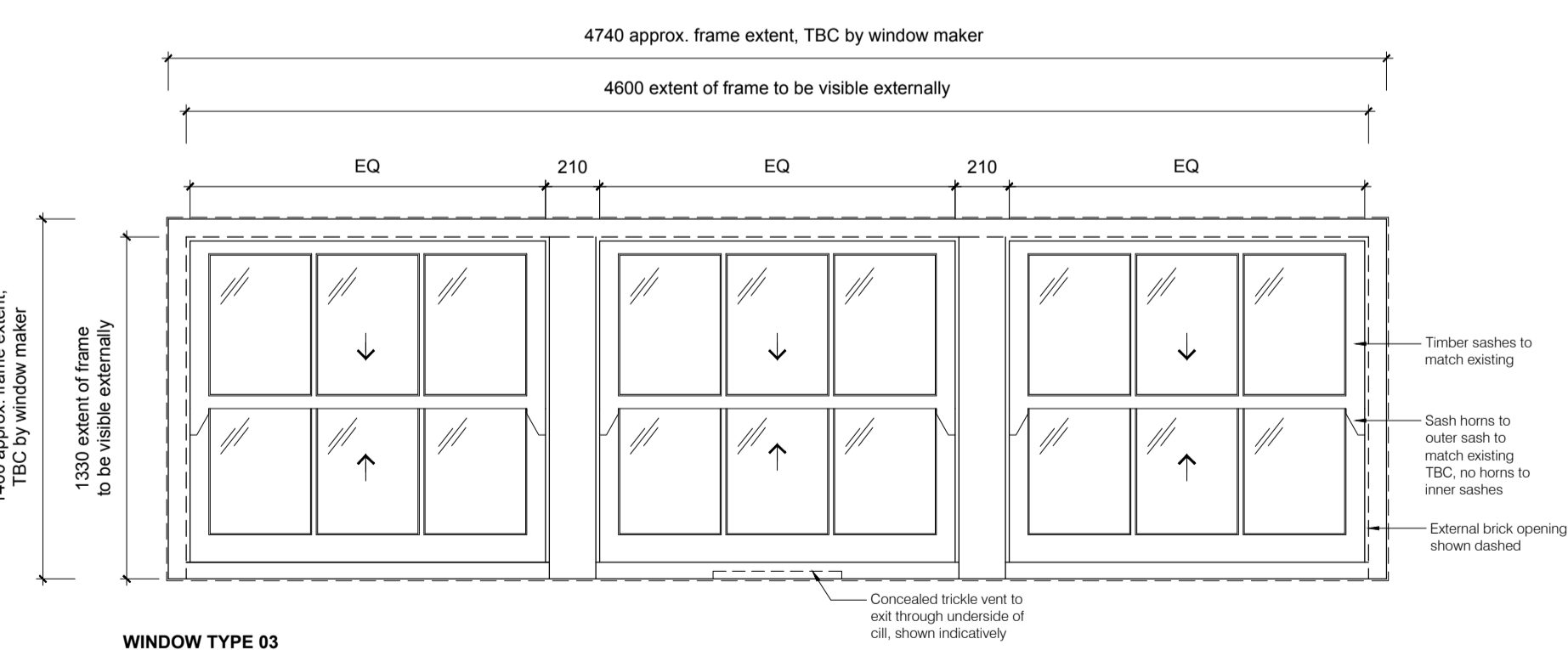
<p>WINDOW TYPE 05</p> <p>Window Numbers: W.LG.04</p> <p>Window System: Cortizo Cor-60 Hidden Sash</p> <p>Description: Aluminium framed fixed window</p> <p>Thermal: 1.6 W/m²K min.</p> <p>Glazing: Double glazing, spec TBC</p> <p>Ironmongery: TBC</p> <p>Trickle Ventilation: N/A</p> <p>Finish: Matt 30% PPC gloss level in RAL (TBC)</p>	<p>WINDOW TYPE 05</p> <p>Window Numbers: W.LG.05</p> <p>Window System: Cortizo Cor-60 Hidden Sash</p> <p>Description: Aluminium framed fixed window</p> <p>Thermal: 1.6 W/m²K min.</p> <p>Glazing: Double glazing, spec TBC</p> <p>Ironmongery: TBC</p> <p>Trickle Ventilation: N/A</p> <p>Finish: Matt 30% PPC gloss level in RAL (TBC)</p>	<p>WINDOW TYPE 05</p> <p>Window Numbers: W.LG.23</p> <p>Window System: Cortizo Cor-60 Hidden Sash</p> <p>Description: Aluminium framed fixed window</p> <p>Thermal: 1.6 W/m²K min.</p> <p>Glazing: Double glazing, spec TBC</p> <p>Ironmongery: TBC</p> <p>Trickle Ventilation: N/A</p> <p>Finish: Matt 30% PPC gloss level in RAL (TBC)</p>	<p>WINDOW TYPE 05</p> <p>Window Numbers: W.LG.24</p> <p>Window System: Cortizo Cor-60 Hidden Sash</p> <p>Description: Aluminium framed fixed window</p> <p>Thermal: 1.6 W/m²K min.</p> <p>Glazing: Double glazing, spec TBC</p> <p>Ironmongery: TBC</p> <p>Trickle Ventilation: N/A</p> <p>Finish: Matt 30% PPC gloss level in RAL (TBC)</p>
--	--	--	--



<p>WINDOW TYPE 05</p> <p>Window Numbers: W.LG.06</p> <p>Window System: Cortizo Cor-60 Hidden Sash</p> <p>Description: Aluminum casement window, tilt & turn, inward opening</p> <p>Thermal: 1.6 W/m²K min.</p> <p>Glazing: Double glazing, spec TBC</p> <p>Ironmongery: TBC</p> <p>Trickle Ventilation: 2500mmsq required, detail TBC</p> <p>Finish: Matt 30% PPC gloss level in RAL (TBC)</p>	<p>WINDOW TYPE 05</p> <p>Window Numbers: W.G.23</p> <p>Window System: Cortizo Cor-60 Hidden Sash</p> <p>Description: Aluminum casement window, tilt & turn, inward opening</p> <p>Thermal: 1.6 W/m²K min.</p> <p>Glazing: Double glazing, spec TBC</p> <p>Ironmongery: TBC</p> <p>Trickle Ventilation: 2500mmsq required, detail TBC</p> <p>Finish: Matt 30% PPC gloss level in RAL (TBC)</p>	<p>WINDOW TYPE 05</p> <p>Window Numbers: W.G.24</p> <p>Window System: Cortizo Cor-60 Hidden Sash</p> <p>Description: Aluminum casement window, tilt & turn, inward opening</p> <p>Thermal: 1.6 W/m²K min.</p> <p>Glazing: Double glazing, spec TBC</p> <p>Ironmongery: TBC</p> <p>Trickle Ventilation: 2500mmsq required, detail TBC</p> <p>Finish: Matt 30% PPC gloss level in RAL (TBC)</p>	<p>WINDOW TYPE 05</p> <p>Window Numbers: W.1.06</p> <p>Window System: Cortizo Cor-60 Hidden Sash</p> <p>Description: Aluminum casement window, tilt & turn, inward opening</p> <p>Thermal: 1.6 W/m²K min.</p> <p>Glazing: Double glazing, spec TBC</p> <p>Ironmongery: TBC</p> <p>Trickle Ventilation: 2500mmsq required, detail TBC</p> <p>Finish: Matt 30% PPC gloss level in RAL (TBC)</p>	<p>WINDOW TYPE 05</p> <p>Window Numbers: W.1.07, W.1.08</p> <p>Window System: Cortizo Cor-60 Hidden Sash</p> <p>Description: Aluminum casement window, tilt & turn, inward opening</p> <p>Thermal: 1.6 W/m²K min.</p> <p>Glazing: Double glazing, spec TBC</p> <p>Ironmongery: TBC</p> <p>Trickle Ventilation: 2500mmsq required, detail TBC</p> <p>Finish: Matt 30% PPC gloss level in RAL (TBC)</p>	<p>WINDOW TYPE 05</p> <p>Window Numbers: W.1.24</p> <p>Window System: Cortizo Cor-60 Hidden Sash</p> <p>Description: Aluminum casement window, tilt & turn, inward opening</p> <p>Thermal: 1.6 W/m²K min.</p> <p>Glazing: Double glazing, spec TBC</p> <p>Ironmongery: TBC</p> <p>Trickle Ventilation: 2500mmsq required, detail TBC</p> <p>Finish: Matt 30% PPC gloss level in RAL (TBC)</p>	<p>WINDOW TYPE 05</p> <p>Window Numbers: W.1.25</p> <p>Window System: Cortizo Cor-60 Hidden Sash</p> <p>Description: Aluminum casement window, tilt & turn, inward opening</p> <p>Thermal: 1.6 W/m²K min.</p> <p>Glazing: Double glazing, spec TBC</p> <p>Ironmongery: TBC</p> <p>Trickle Ventilation: 2500mmsq required, detail TBC</p> <p>Finish: Matt 30% PPC gloss level in RAL (TBC)</p>
--	---	---	---	---	---	---



<p>WINDOW TYPE 06</p> <p>Window Numbers: D.LG.11</p> <p>Window System: Cortizo Cor-60 Hidden Sash</p> <p>Description: Aluminum casement door, inward opening</p> <p>Thermal: 1.6 W/m²K min.</p> <p>Glazing: Double glazing, spec TBC</p> <p>Ironmongery: TBC</p> <p>Trickle Ventilation: 2500mmsq required, detail TBC</p> <p>Finish: Matt 30% PPC gloss level in RAL (TBC)</p>	<p>WINDOW TYPE 06</p> <p>Window Numbers: D.LG.26</p> <p>Window System: Cortizo Cor-60 Hidden Sash</p> <p>Description: Aluminum double casement doors, inward opening</p> <p>Thermal: 1.6 W/m²K min.</p> <p>Glazing: Double glazing, spec TBC</p> <p>Ironmongery: TBC</p> <p>Trickle Ventilation: 2500mmsq required, detail TBC</p> <p>Finish: Matt 30% PPC gloss level in RAL (TBC)</p>	<p>WINDOW TYPE 05</p> <p>Window Numbers: W.G.04, W.G.05</p> <p>Window System: Cortizo Cor-60 Hidden Sash</p> <p>Description: Aluminum casement door, inward opening</p> <p>Thermal: 1.6 W/m²K min.</p> <p>Glazing: Double glazing, spec TBC</p> <p>Ironmongery: TBC</p> <p>Trickle Ventilation: 2500mmsq required, detail TBC</p> <p>Finish: Matt 30% PPC gloss level in RAL (TBC)</p>	<p>WINDOW TYPE 06</p> <p>Window Numbers: D.G.06</p> <p>Window System: Cortizo Cor-60 Hidden Sash</p> <p>Description: Aluminum casement door, inward opening</p> <p>Thermal: 1.6 W/m²K min.</p> <p>Glazing: Double glazing, spec TBC</p> <p>Ironmongery: TBC</p> <p>Trickle Ventilation: 2500mmsq required, detail TBC</p> <p>Finish: Matt 30% PPC gloss level in RAL (TBC)</p>
---	---	--	--



WINDOW TYPE 03

Window Numbers: W.4.03, W.4.22

Window System: Conservation type timber box sliding sashes

Description: Conservation type timber box sliding sash windows to match existing

Thermal: 1.6 W/m²K min.

Glazing: Double glazing, spec TBC

Ironmongery: TBC

Trickle Ventilation: 2500mmsq required, detail TBC

Finish: Paint finish as per finishes schedule

GENERAL NOTES

- A. Do not scale from this drawing. Check all dimensions and conditions on site. As Existing drawings are based on survey information supplied/produced by the client.
- B. All works to be carried out in accordance with current health and safety including CDM regulations. All works to comply with current British standards and regulations, codes of practice, Building regulations, and appropriate European standards.
- C. All structural work is to be carried out in accordance with the structural engineers details and calculations.
- D. Precise positions of all fixtures and fittings is subject to confirmation on site.
- E. Allow for the protection of all finishes and fittings that are to be retained.
- F. All drawings are to be read in conjunction with the scope of works and relevant specifications.
- G. All drainage shown is indicative - refer to M&E drawings for details.
- H. All works to be carried out strictly in accordance with relevant manufacturers instructions

WINDOW NOTES

- All windows drawn from the outside

rev	date	checked	description
A	19.09.2016	ww lg	General update

modulor studio
 5a Iliffe Yard
 London, SE17 3QA
 T: +44 (0)20 7193 1717
 E: www.modulor-studio.co.uk

client: 66-67 Guilford Street, London WC1N 1DF
 drawing title: Window & Door Schedule 8
 scale: 1:25 @ A1 (1:50 @ A3)

job no. 16009 dwg no. 417 revision A