



PLANNING

| | | |
|-----|----------|-----------------------------------------------|
| P5 | 18.11.16 | Amended PVs + Green roof location as clouded |
| P4 | 12.01.16 | External finishes NE side |
| P3 | 17.11.15 | Winter Garden Proposal |
| P2 | 03.07.15 | Revise staircase positions and decking layout |
| P1 | 03.03.15 | Planning Issue |
| Rev | Date | Note |

Acoustic Engineer

Gillieron Scott Acoustic Design

Interior Design

Gordon-Duff + Linton

Project Management / Quantity Surveyor

Stace LLP

Services

Synergy Consulting

Structures

Fluid Structures

Client

Linton Property Developments Ltd

The Linton Group,
14 Basil Street, Knightsbridge, London, SW3 1AJ

Project title

LINTON HOUSE

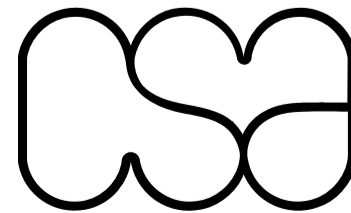
Drawing Title

**WINTER GARDEN FLOOR
AS PROPOSED**

Scale @ A1 **1:100/1:200@A3**

| | | |
|-------------|-------------|-----------|
| Project No. | Drawing no. | Revision |
| 152 | 126 | P5 |

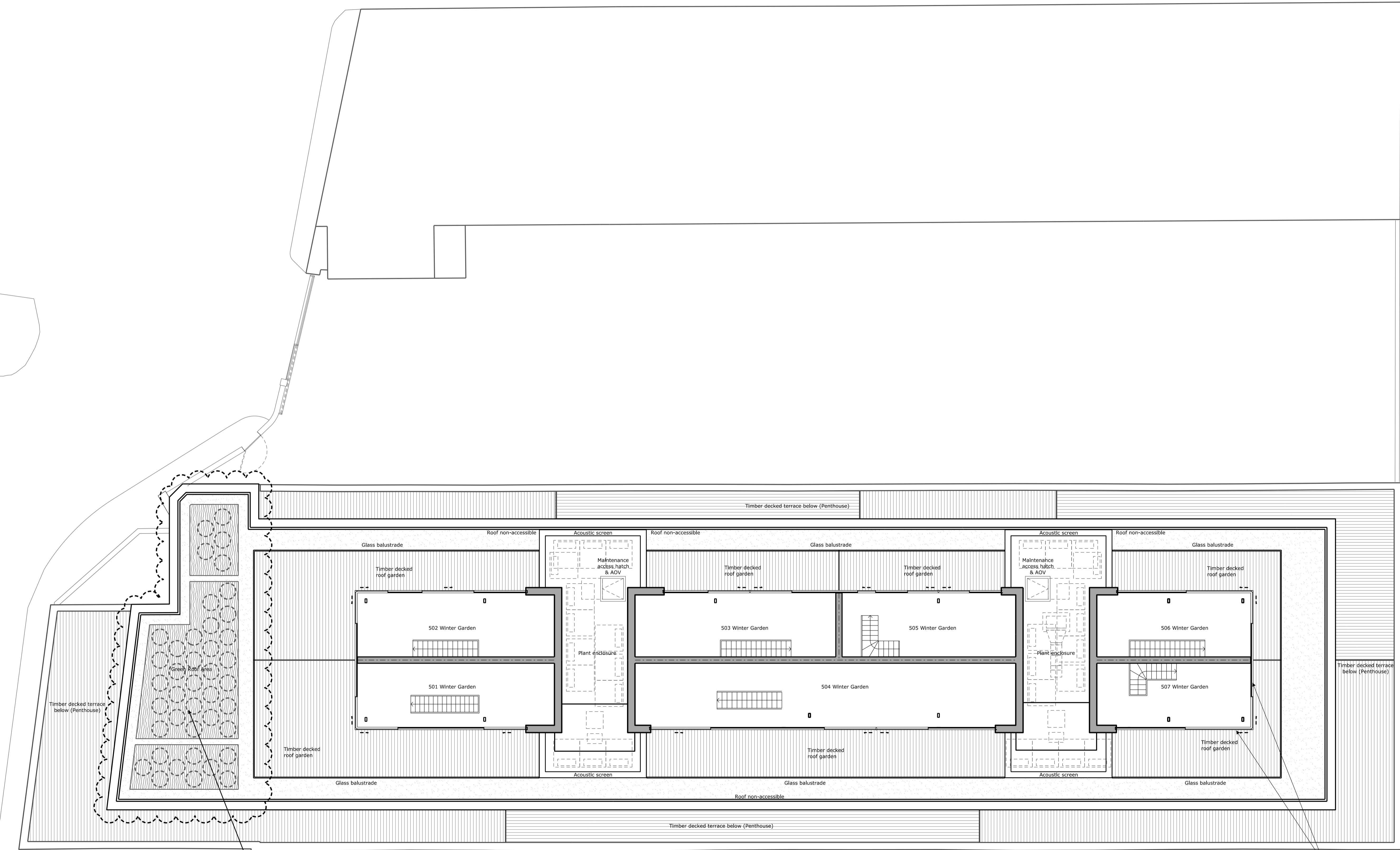
| | |
|-----------------|-----------------|
| Status | Date of Issue |
| PLANNING | NOV 2016 |



Clive Sall Architecture Ltd.

2 Providence Yard
Ezra Street
London E2 7RJ

Copyright CLIVE SALL ARCHITECTURE LTD



Surface finishes as detailed below:
100% vegetation cover, split between sedum blanket on 80mm substrate (60%) and biodiverse wildflower mixture of seeded and plug planted areas on 100-150mm substrate (40%)

Glazing to areas as indicated will be suitably treated to reduce internal light spill in darkness

