

RUSSELL TAYLOR ARCHITECTS

85 BLACKFRIARS ROAD LONDON SE1 8HA
www.rtarchitects.co.uk

1st December 2016

Mr John Diver
Regenerations and Planning
Development Management
London Borough of Camden
Town Hall
Judd Street
London
WC1H 9JE

26 Fitzroy Square
LONDON W1T 6BT

CONDITIONS DISCHARGE APPLICATION
IN CONNECTION WITH
2016/1779/P & 2016/2501/L

This document is submitted to support an application to discharge conditions attached to Planning and Listed Building consent for the works in connection with the change of use at No. 26 Fitzroy Square.

Permissions were granted on 5th August 2016, reference 2016/1779/P and 2016/2501/L.
In particular we refer to *Condition 4 - Submission of details*:

(a) *Samples and/or manufacturer's details of the proposed terrazzo resurfacing materials*

Please find attached drawings:

- 6228/209: Proposed Front Lightwell
- Entrance Steps will be slabs of Portland stone – Jordans Whitbed. No surface treatment will be applied. Also refer to Albion Stone Sample and Images 1 & 2
- Steps from Street Level to Lower Ground Floor will be Diamond Sawn Yorkstone. No Surface treatment will be applied. Also Refer to Johnsons Wellfield sample and Image 3.
- Works to this part of the project are not due to start for several weeks.

Yours sincerely

Ryan Johnston
Russell Taylor Architects

c.c. The Royal Society of Musicians

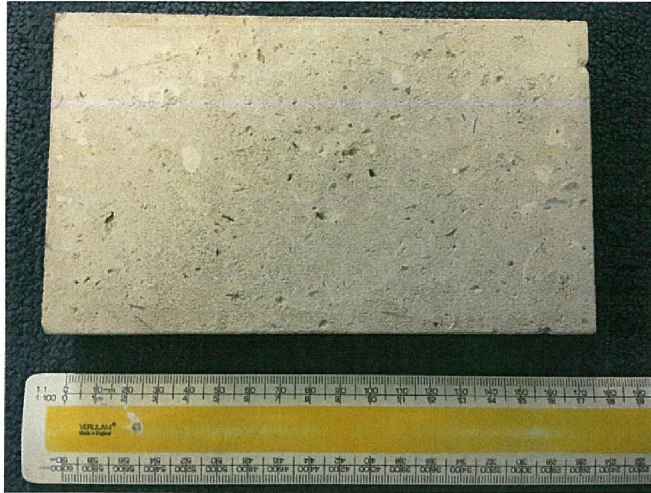


Image 1: Albion Stone Sample - Portland Stone, Jordans Whitbed Finished face



Image 2: Albion Stone Sample - Portland Stone, Jordans Whitbed



Image 3: Johnson Wellfield Sample - Yorkstone, Diamond Sawn Finish.