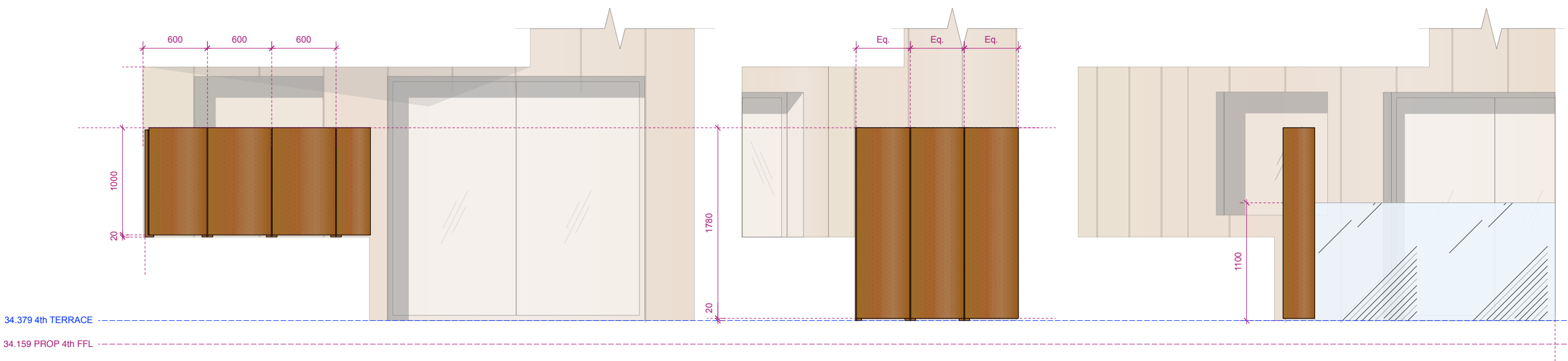


## FOURTH FLOOR BALUSTRADE AND SCREEN SETTING OUT

- NOTES**
1. Obscure visibility screens formed from 3mm perforated aluminum sheet, folded on all sides to form rigid cassette. Screens supported at regular intervals by steel 'T' section posts.
  2. All metalwork power coated in 'Tiger Coatings C34 Metallic' to match cladding.
  3. Glass balustrade fixed by concealed channel below decking line. Balustrade formed from 2x10mm laminated toughened glass.
  4. Positions and height of all screens and balustrades in accordance with approved application.
  5. For detailed drawings, see CCS Facades fabrication drawings CCS-P1641-DET-700, CCS-P1641-DET-702, CCS-P1641-DET-703, CCS-P1641-DET-704, CCS-P1641-DET-705, CCS-P1641-DET-706, CCS-P1641-DET-709, CCS-P1641-DET-7010.
  6. Sample of screens available for inspection on site.

FOR PLANNING

DATE	16/04/2024	BY	JJA
REV	01	DATE	16/04/2024
gpap architecture & interior design			
CLIENT BOULTBEE BROOKS (HATTON WALL) LTD			
PROJECT 18-26 HATTON WALL LONDON EC1N 8JH			
THE FOURTH FLOOR BALUSTRADE AND SCREEN SETTING OUT			
DWG NO	435-GA.51	REV	
DRAWN BY	DW	SCALE	1:50 @ A1
CHECKED BY	JJA	DATE	APRIL 16
T: 020 7549 2133 F: 020 7549 2144 E: info@gpap.com W: www.gpap.com			
The drawing is the property of gpap and is to be used for the project only. It is not to be reproduced, stored or distributed in any form without the prior written consent of gpap. The drawing is the property of gpap and is to be used for the project only. It is not to be reproduced, stored or distributed in any form without the prior written consent of gpap.			
RENAME	PREF SIZE A1		



SCREEN ELEVATION A

SCREEN ELEVATION B

GLASS BALUSTRADE ELEVATION C

FLAT 05 TERRACE  
FOURTH FLOOR

- NOTES**
- 1. Obscure visibility screens formed from 3mm perforated aluminum sheet, folded on all sides to form rigid cassette. Screens supported at regular intervals by steel 'T' section posts.
  - 2. All metalwork power coated in 'Tiger Coatings C34 Metallic ' to match cladding.
  - 3. Glass balustrade fixed by concealed channel below decking line. Balustrade formed from 2x10mm laminated toughened glass.
  - 4. Positions and height of all screens and balustrades in accordance with approved application.
  - 5. For detailed drawings, see CCS Facades fabrication drawings CCS-P1641-DET-700, CCS-P1641-DET-702, CCS-P1641-DET-703, CCS-P1641-DET-704, CCS-P1641-DET-705, CCS-P1641-DET-706, CCS-P1641-DET-709, CCS-P1641-DET-7010.
  - 6. Sample of screens available for inspection on site.

FOR PLANNING

rev	date	action
gpad architecture & interior design		
client	BOULTBEE BROOKS (HATTON WALL) LTD	
project	18-26 HATTON WALL LONDON EC1N 8JH	
title	FLAT 05 TERRACE FOURTH FLOOR	
dwg no	435-GA.52	rev
drawn by	DW	scale 1:20 @ A1
checked by	JA	dne APRIL 16
T: 020 7549 2133 G: 020 7549 2144 E: info@gpad.co.uk W: www.gpad.co.uk		
The drawing is the property of gpad London Ltd. It is to be reproduced, stored or otherwise used without written permission. All dimensions are to be checked and verified on site by the contractor before construction of any fabrications. Drawing is for reference only. Not to be used for construction without approval.		
revision	date	description
1		

## FIFTH FLOOR BALUSTRADE AND SCREEN SETTING OUT

### NOTES

1. Obscure visibility screens formed from 3mm perforated aluminum sheet, folded on all sides to form rigid cassette. Screens supported at regular intervals by steel 'T' section posts.
2. All metalwork power coated in 'Tiger Coatings C34 Metallic' to match cladding.
3. Glass balustrade fixed by concealed channel below decking line. Balustrade formed from 2x10mm laminated toughened glass.
4. Positions and height of all screens and balustrades in accordance with approved application.
5. For detailed drawings, see CCS Facades fabrication drawings CCS-P1641-DET-700, CCS-P1641-DET-702, CCS-P1641-DET-703, CCS-P1641-DET-704, CCS-P1641-DET-705, CCS-P1641-DET-706, CCS-P1641-DET-709, CCS-P1641-DET-7010.
6. Sample of screens available for inspection on site.

435-GA.56  
5th Floor Screen /  
Balustrade Elevation 1

435-GA.56  
5th Floor Screen /  
Balustrade Elevation 2

435-GA.56  
5th Floor Screen /  
Balustrade Elevation 3

435-GA.56  
5th Floor Screen /  
Balustrade Elevation 4

435-GA.56  
5th Floor Screen /  
Balustrade Elevation 5

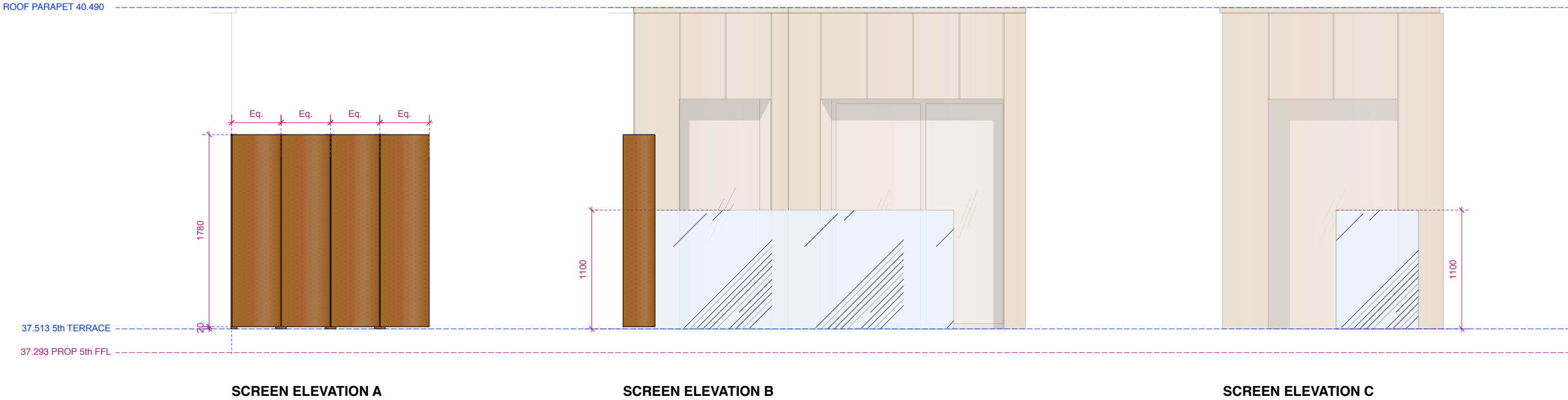
GA.54

GA.55

FOR PLANNING

gpad architecture & interior design	
CLIENT	BOULTBEE BROOKS (HATTON WALL) LTD
PROJECT	18-26 HATTON WALL LONDON EC1N 8JH
TITLE	FIFTH FLOOR BALUSTRADE AND SCREEN SETTING OUT
DWG NO	435-GA.53
DATE	APRIL 16
SCALE	1:50 @ A1
CHECKED BY	JA
DRAWN BY	DW
DATE	APRIL 16
REV	1
REV	2
REV	3
REV	4
REV	5
REV	6
REV	7
REV	8
REV	9
REV	10
REV	11
REV	12
REV	13
REV	14
REV	15
REV	16
REV	17
REV	18
REV	19
REV	20
REV	21
REV	22
REV	23
REV	24
REV	25
REV	26
REV	27
REV	28
REV	29
REV	30
REV	31
REV	32
REV	33
REV	34
REV	35
REV	36
REV	37
REV	38
REV	39
REV	40
REV	41
REV	42
REV	43
REV	44
REV	45
REV	46
REV	47
REV	48
REV	49
REV	50
REV	51
REV	52
REV	53
REV	54
REV	55
REV	56
REV	57
REV	58
REV	59
REV	60
REV	61
REV	62
REV	63
REV	64
REV	65
REV	66
REV	67
REV	68
REV	69
REV	70
REV	71
REV	72
REV	73
REV	74
REV	75
REV	76
REV	77
REV	78
REV	79
REV	80
REV	81
REV	82
REV	83
REV	84
REV	85
REV	86
REV	87
REV	88
REV	89
REV	90
REV	91
REV	92
REV	93
REV	94
REV	95
REV	96
REV	97
REV	98
REV	99
REV	100
REV	101
REV	102
REV	103
REV	104
REV	105
REV	106
REV	107
REV	108
REV	109
REV	110
REV	111
REV	112
REV	113
REV	114
REV	115
REV	116
REV	117
REV	118
REV	119
REV	120
REV	121
REV	122
REV	123
REV	124
REV	125
REV	126
REV	127
REV	128
REV	129
REV	130
REV	131
REV	132
REV	133
REV	134
REV	135
REV	136
REV	137
REV	138
REV	139
REV	140
REV	141
REV	142
REV	143
REV	144
REV	145
REV	146
REV	147
REV	148
REV	149
REV	150
REV	151
REV	152
REV	153
REV	154
REV	155
REV	156
REV	157
REV	158
REV	159
REV	160
REV	161
REV	162
REV	163
REV	164
REV	165
REV	166
REV	167
REV	168
REV	169
REV	170
REV	171
REV	172
REV	173
REV	174
REV	175
REV	176
REV	177
REV	178
REV	179
REV	180
REV	181
REV	182
REV	183
REV	184
REV	185
REV	186
REV	187
REV	188
REV	189
REV	190
REV	191
REV	192
REV	193
REV	194
REV	195
REV	196
REV	197
REV	198
REV	199
REV	200
REV	201
REV	202
REV	203
REV	204
REV	205
REV	206
REV	207
REV	208
REV	209
REV	210
REV	211
REV	212
REV	213
REV	214
REV	215
REV	216
REV	217
REV	218
REV	219
REV	220
REV	221
REV	222
REV	223
REV	224
REV	225
REV	226
REV	227
REV	228
REV	229
REV	230
REV	231
REV	232
REV	233
REV	234
REV	235
REV	236
REV	237
REV	238
REV	239
REV	240
REV	241
REV	242
REV	243
REV	244
REV	245
REV	246
REV	247
REV	248
REV	249
REV	250
REV	251
REV	252
REV	253
REV	254
REV	255
REV	256
REV	257
REV	258
REV	259
REV	260
REV	261
REV	262
REV	263
REV	264
REV	265
REV	266
REV	267
REV	268
REV	269
REV	270
REV	271
REV	272
REV	273
REV	274
REV	275
REV	276
REV	277
REV	278
REV	279
REV	280
REV	281
REV	282
REV	283
REV	284
REV	285
REV	286
REV	287
REV	288
REV	289
REV	290
REV	291
REV	292
REV	293
REV	294
REV	295
REV	296
REV	297
REV	298
REV	299
REV	300
REV	301
REV	302
REV	303
REV	304
REV	305
REV	306
REV	307
REV	308
REV	309
REV	310
REV	311
REV	312
REV	313
REV	314
REV	315
REV	316
REV	317
REV	318
REV	319
REV	320
REV	321
REV	322
REV	323
REV	324
REV	325
REV	326
REV	327
REV	328
REV	329
REV	330
REV	331
REV	332
REV	333
REV	334
REV	335
REV	336
REV	337
REV	338
REV	339
REV	340
REV	341
REV	342
REV	343
REV	344
REV	345
REV	346
REV	347
REV	348
REV	349
REV	350
REV	351
REV	352
REV	353
REV	354
REV	355
REV	356
REV	357
REV	358
REV	359
REV	360
REV	361
REV	362
REV	363
REV	364
REV	365
REV	366
REV	367
REV	368
REV	369
REV	370
REV	371
REV	372
REV	373
REV	374
REV	375
REV	376
REV	377
REV	378
REV	379
REV	380
REV	381
REV	382
REV	383
REV	384
REV	385
REV	386
REV	387
REV	388
REV	389
REV	390
REV	391
REV	392
REV	393
REV	394
REV	395
REV	396
REV	397
REV	398
REV	399
REV	400
REV	401
REV	402
REV	403
REV	404
REV	405
REV	406
REV	407
REV	408
REV	409
REV	410
REV	411
REV	412
REV	413
REV	414
REV	415
REV	416
REV	417
REV	418
REV	419
REV	420
REV	421
REV	422
REV	423
REV	424
REV	425
REV	426
REV	427
REV	428
REV	429
REV	430
REV	431
REV	432
REV	433
REV	434
REV	435
REV	436
REV	437
REV	438
REV	439
REV	440
REV	441
REV	442
REV	443
REV	444
REV	445
REV	446
REV	447
REV	448
REV	449
REV	450
REV	451
REV	452
REV	453
REV	454
REV	455
REV	456
REV	457
REV	458
REV	459
REV	460
REV	461
REV	462
REV	463
REV	464
REV	465
REV	466
REV	467
REV	468
REV	469
REV	470
REV	471
REV	472
REV	473
REV	474
REV	475
REV	476
REV	477
REV	478
REV	479
REV	480
REV	481
REV	482
REV	483
REV	484
REV	485
REV	486
REV	487
REV	488
REV	489
REV	490
REV	491
REV	492
REV	493
REV	494
REV	495
REV	496
REV	497
REV	498
REV	499
REV	500
REV	501
REV	502
REV	503
REV	504
REV	505
REV	506
REV	507
REV	508
REV	509
REV	510
REV	511
REV	512
REV	513
REV	514
REV	515
REV	516
REV	517
REV	518
REV	519
REV	520
REV	521
REV	522
REV	523
REV	524
REV	525
REV	526
REV	527
REV	528
REV	529
REV	530
REV	531
REV	532
REV	533
REV	534
REV	535
REV	536
REV	537
REV	538
REV	539
REV	540
REV	541
REV	542
REV	543
REV	544
REV	545
REV	546
REV	547
REV	548
REV	549
REV	550
REV	551
REV	552
REV	553
REV	554
REV	555
REV	556
REV	557
REV	558
REV	559
REV	560
REV	561
REV	562
REV	563
REV	564
REV	565
REV	566
REV	567
REV	568
REV	569
REV	570
REV	571
REV	572
REV	573
REV	574
REV	575
REV	576
REV	577
REV	578
REV	579
REV	580
REV	581
REV	582
REV	583
REV	584
REV	585
REV	586
REV	587
REV	588
REV	589
REV	590
REV	591
REV	592
REV	593
REV	594
REV	595
REV	596
REV	597
REV	598
REV	599
REV	600
REV	601
REV	602
REV	603
REV	604
REV	605
REV	606
REV	607
REV	608
REV	609
REV	610
REV	611
REV	612
REV	613
REV	614
REV	615
REV	616
REV	617
REV	618
REV	619
REV	620
REV	621
REV	622
REV	623
REV	624
REV	625
REV	626
REV	627
REV	628
REV	629
REV	630
REV	631
REV	632
REV	633
REV	634
REV	

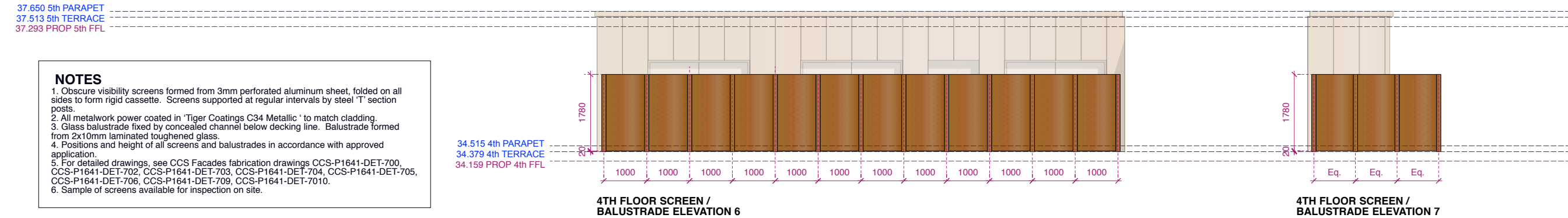
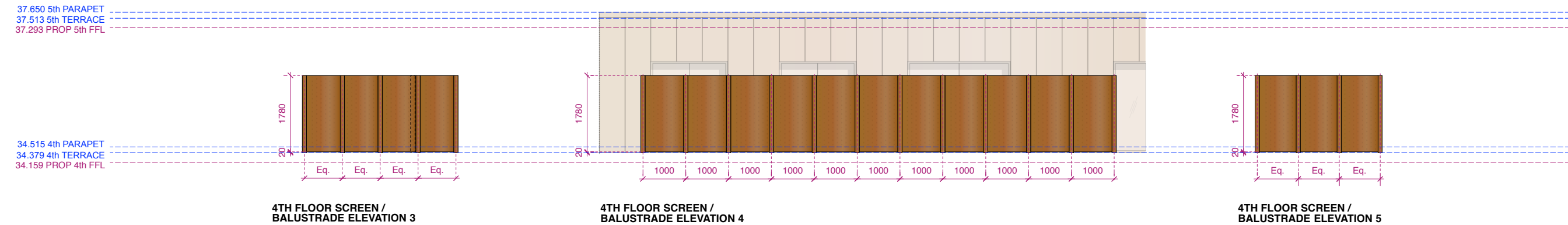
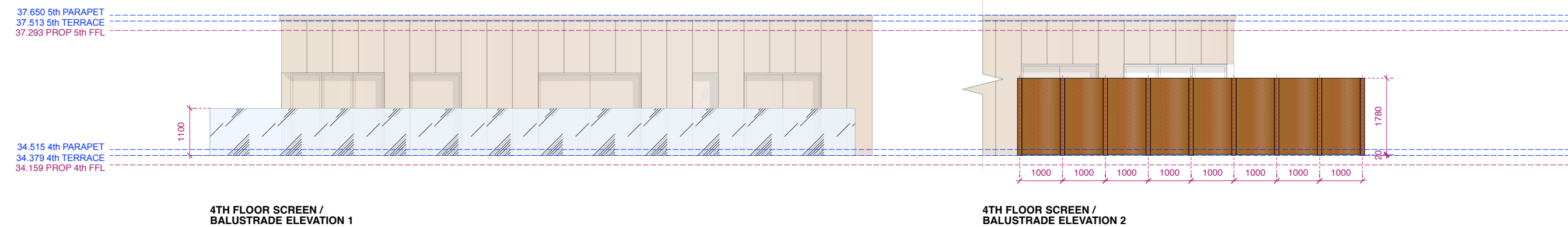
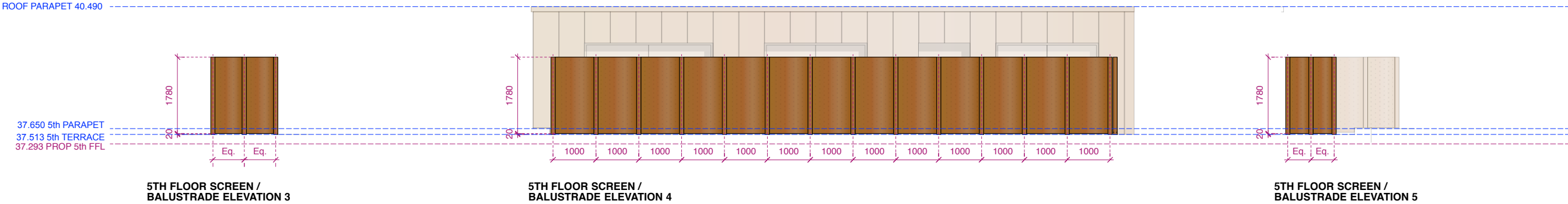
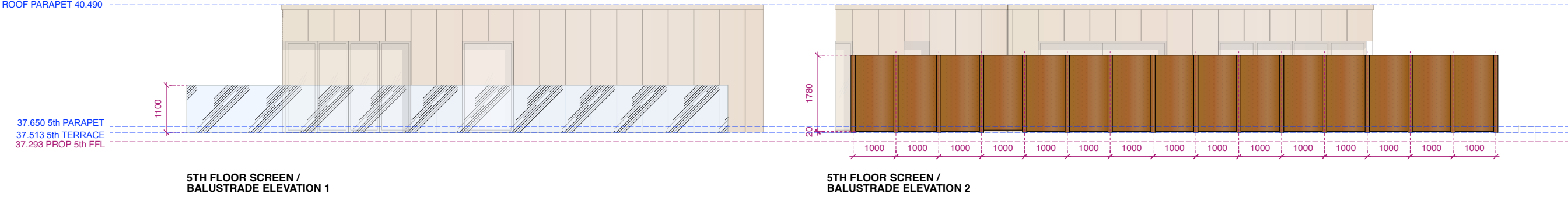




FLAT 04 TERRACE  
FIFTH FLOOR

- NOTES**
- Obscure visibility screens formed from 3mm perforated aluminum sheet, folded on all sides to form rigid cassette. Screens supported at regular intervals by steel 'T' section posts.
  - All metalwork power coated in 'Tiger Coatings C34 Metallic ' to match cladding.
  - Glass balustrade fixed by concealed channel below decking line. Balustrade formed from 2x10mm laminated toughened glass.
  - Positions and height of all screens and balustrades in accordance with approved application.
  - For detailed drawings, see CCS Facades fabrication drawings CCS-P1641-DET-700, CCS-P1641-DET-702, CCS-P1641-DET-703, CCS-P1641-DET-704, CCS-P1641-DET-705, CCS-P1641-DET-706, CCS-P1641-DET-709, CCS-P1641-DET-7010.
  - Sample of screens available for inspection on site.

FOR PLANNING			
rev	date	action	
gpad architecture & interior design			
CLIENT	BOULTBEE BROOKS (HATTON WALL) LTD		
PROJECT	18-26 HATTON WALL LONDON EC1N 8JH		
TITLE	FLAT 04 TERRACE FIFTH FLOOR		
DWG NO	435-GA.55	REV	
DRAWN BY	DW	SCALE	1:20 @ A1
CHECKED BY	JA	DATE	APRIL 16
T: 020 7549 2133    F: 020 7549 2144    E: info@gpadll.com    W: www.gpadll.com    gpadll.com Ltd is the registered, limited or otherwise form of incorporation under statute in a state with no legal personality. Direct sales of the drawings, all related documents to be checked and sealed as per the company's latest incorporation of the applicable drawings of each sub-contractor on site. Please see documents to the relevant standards. Drawings to be kept in accordance with relevant drawings and specifications.			
RENAME	PREF SIZE A1		



**NOTES**

1. Obscure visibility screens formed from 3mm perforated aluminum sheet, folded on all sides to form rigid cassette. Screens supported at regular intervals by steel 'T' section posts.
2. All metalwork power coated in 'Tiger Coatings C34 Metallic' to match cladding.
3. Glass balustrade fixed by concealed channel below decking line. Balustrade formed from 2x10mm laminated toughened glass.
4. Positions and height of all screens and balustrades in accordance with approved application.
5. For detailed drawings, see CCS Facades fabrication drawings CCS-P1641-DET-700, CCS-P1641-DET-702, CCS-P1641-DET-703, CCS-P1641-DET-704, CCS-P1641-DET-705, CCS-P1641-DET-706, CCS-P1641-DET-709, CCS-P1641-DET-7010.
6. Sample of screens available for inspection on site.

FOR PLANNING

rev	date	notes	
gpad architecture & interior design			
CLIENT	BOULTBEE BROOKS (HATTON WALL) LTD		
PROJECT	18-26 HATTON WALL LONDON EC1N 8JH		
TITLE	BALUSTRADE AND SCREEN ELEVATIONS		
DWG NO	435-GA.56	REV	
DRAWN BY	DW	SCALE	1:50@A1
CHECKED BY	JA	DATE	APRIL 16
T: 020 7540 2133 F: 020 7540 2144 E: info@gpad.co.uk W: www.gpad.co.uk			
The drawing is the property of gpad (London) Ltd. It is to be reproduced, stored or otherwise used in any manner without the prior written consent of gpad (London) Ltd. No part of this drawing may be reproduced or stored in any retrieval system without the prior written consent of gpad (London) Ltd. No part of this drawing may be reproduced or stored in any retrieval system without the prior written consent of gpad (London) Ltd.			
REVISION	REV 1		
PRINT SIZE	A1		