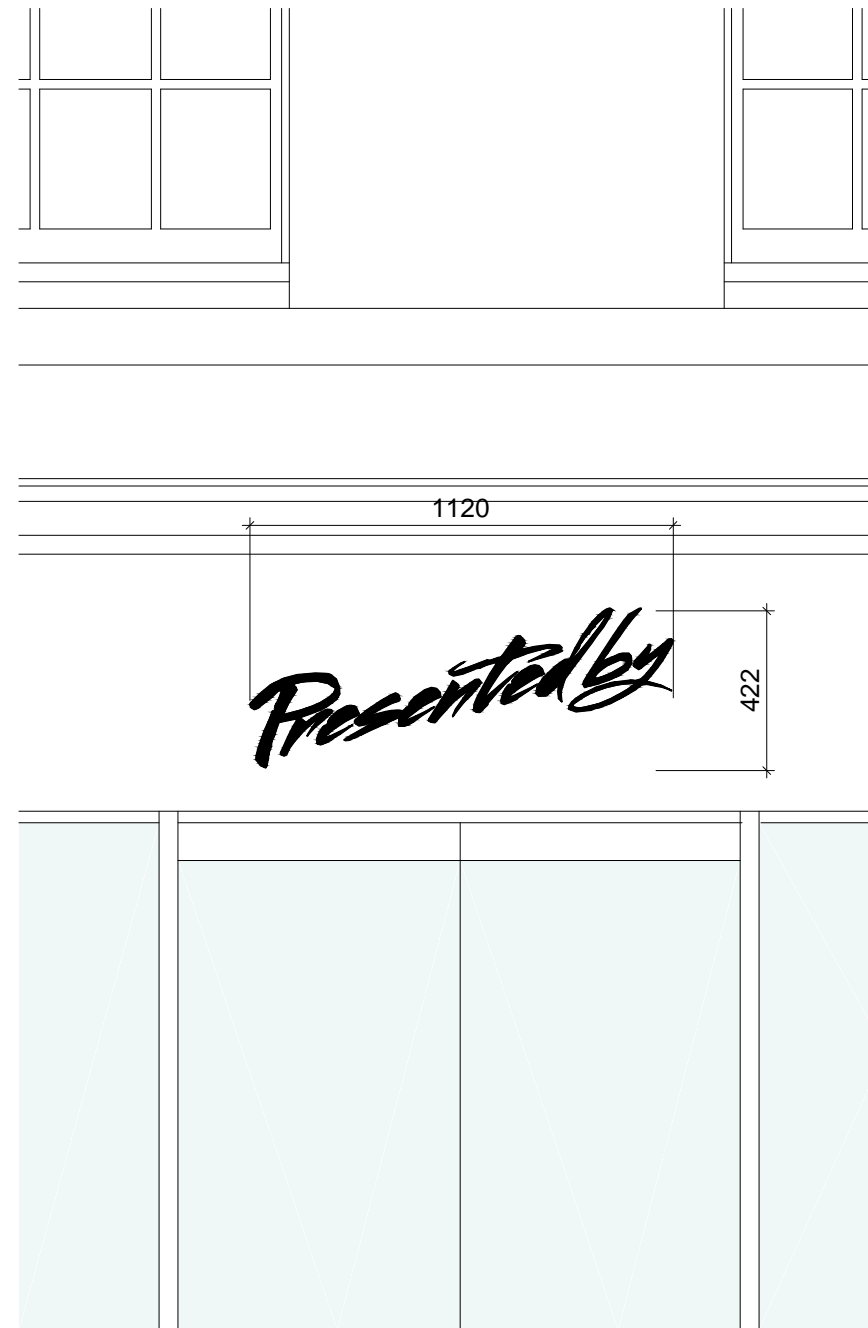




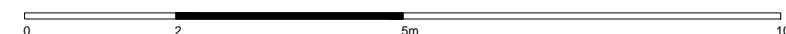
SHOPFRONT SIGNAGE @ 1:50

PROPOSED SIGNAGE

New fixed fascia sign to be formed in laser cut stainless steel letters and fixed to existing fascia with concealed fixing bolts with stainless steel spacers, reversible. The sign is to be black painted to match that of the painted fascia so as to be visually discrete. The sign is to be backlit with discrete and concealed LED rigid lighting strip type 20W cool white 3000k, reversible, as shown in the illustration. This will give limited light output purely to provide a silhouette to the sign so that it is legible against the matching background of the fascia. The proposed dimensions are as indicated.



SHOPFRONT SIGNAGE @ 1:20



The use of this data by the recipient acts as an agreement of the following statements. Do not use this data if you do not agree with any of the following statements:-

All drawings are based upon site information supplied by third parties and as such their accuracy cannot be guaranteed. All features are approximate and subject to clarification by a detailed topographical survey, statutory service enquiries and confirmation of the legal boundaries.

Do not scale except for the purposes of planning.

Report any discrepancies in writing to Palmer Lunn Architects before proceeding.

P01	first issue	06.12.2016	APa	MLu
Rev	Description	Date	Drn	Chk

Status
PLANNING

Client
Build8

Project
Shop Refurbishment
15 Percy Street
London W1T 1DS

Drawing
SHOPFRONT SIGNAGE
as PROPOSED

Project No.	Drawing No.	Revision
16006	PCY-PL-012	P01

Scale @ A3 Drawn By
1:50; 1:20 APa

palmer lunn architects

www.palmerlunn.com