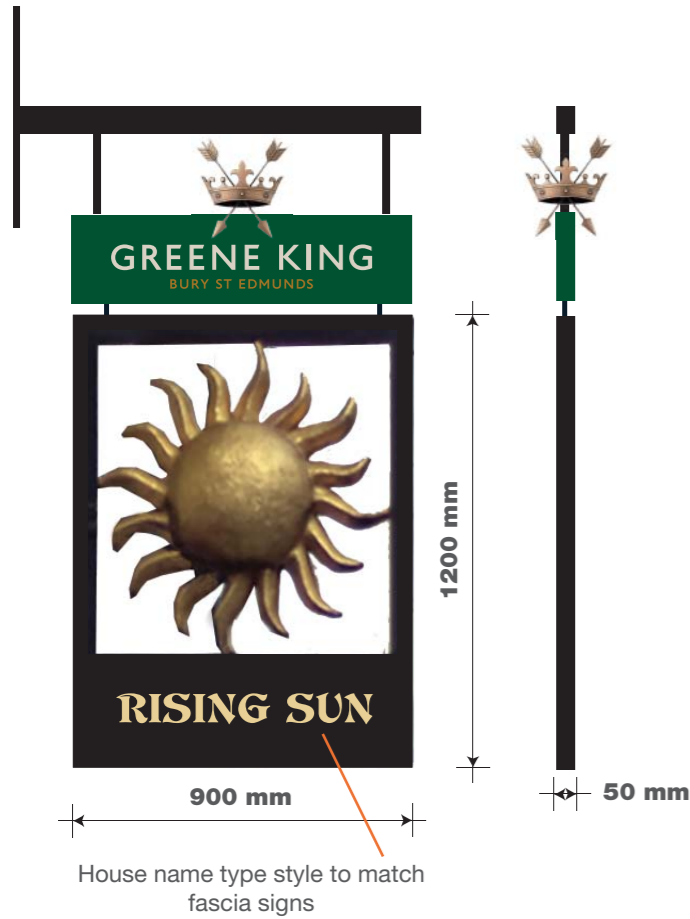


**ITEM 01 (Qty 1)**

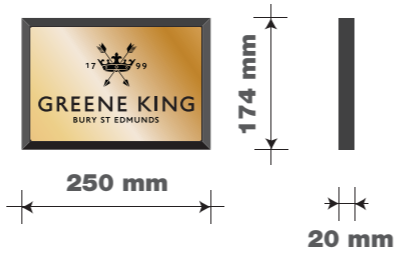
Retain existing bracket work and pictorial sign.  
Green king header to display a 3D crown and individual letters.  
LED illumination.  
Refurbish existing 3D pictorial and add house name in new font to match fascia sign.  
Illuminated by 2No. LED spot lights.  
Scale 1:20



Height above ground: 5000mm

**ITEM 02 (Qty 1)**

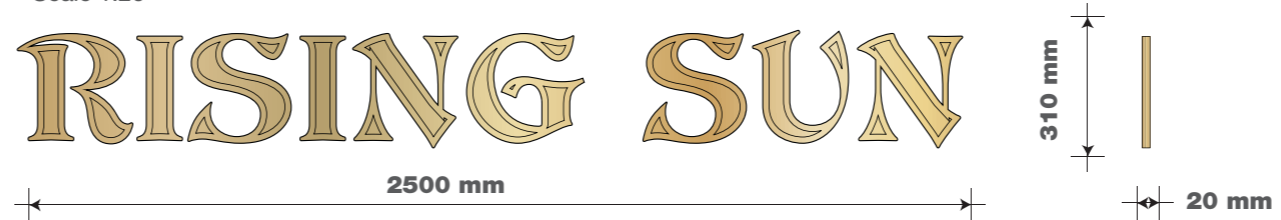
An engraved and infilled brass plaque complete with a timber backing board.  
Scale 1:10



Height above ground: 1500mm

**ITEM 03A (Qty 1)**

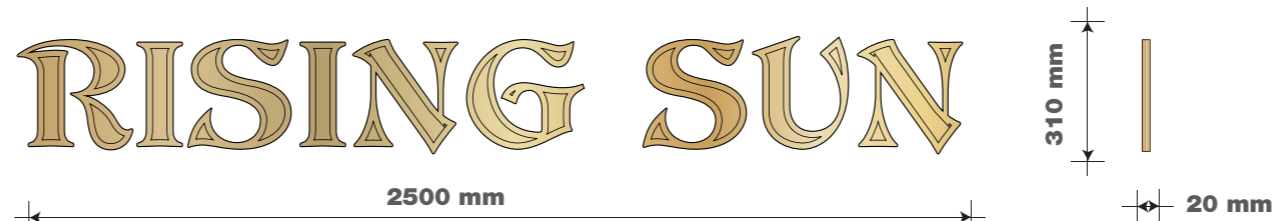
New Individual gold letters with black coachline  
**Alarm boxes to be repositioned by others.**  
Scale 1:20



Height above ground: 4500mm

**ITEM 03B (Qty 1)**

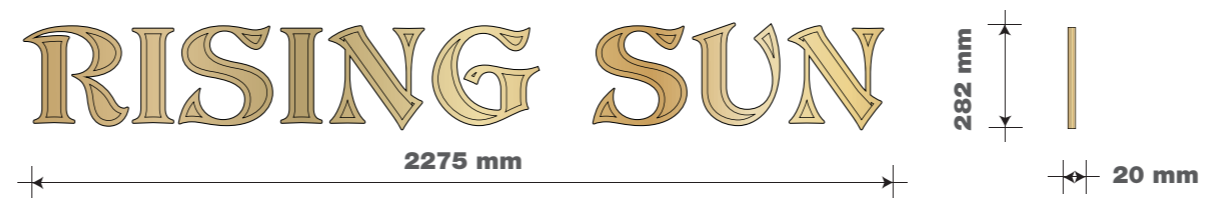
New Individual gold letters with black coachline  
**Alarm boxes to be repositioned by others.**  
Scale 1:20



Height above ground: 4500mm

**ITEM 03C (Qty 1)**

New Individual gold letters with black coachline  
**Alarm boxes to be repositioned by others.**  
Scale 1:20



Height above ground: 4500mm

GREENE KING  
**RISING SUN**  
46 TOTENHAM COURT RD,  
LONDON,  
W1T 2ED

**124046 (REV A)**  
02/12/16 - MKF

**ITEM 06A (Qty 1)**  
Recover existing awnings.



House name type style to match fascia signs

Height above ground: 4000mm

**ITEM 06B (Qty 1)**  
Recover existing awnings.



House name type style to match fascia signs

Height above ground: 4000mm

**ITEM 07A (Qty 1)**  
Dusted crystal etch vinyl applied to windows.  
Scale 1:10



470 mm  
Height above ground: 1500mm

**ITEM 07B (Qty 1)**  
Dusted crystal etch vinyl applied to windows.  
Scale 1:10



470 mm  
Height above ground: 1500mm

**ITEM 07C (Qty 1)**  
Dusted crystal etch vinyl applied to windows.  
Scale 1:10



470 mm  
Height above ground: 1500mm

**ITEM 07D (Qty 1)**  
Dusted crystal etch vinyl applied to windows.  
Scale 1:10



470 mm  
Height above ground: 1500mm

**ITEM 07E (Qty 1)**  
Dusted crystal etch vinyl applied to windows.  
Scale 1:10



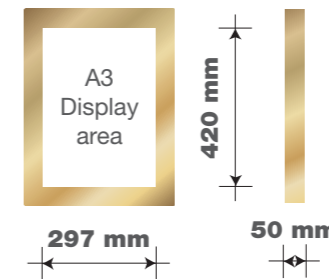
470 mm  
Height above ground: 1500mm

**ITEM 07F (Qty 1)**  
Dusted crystal etch vinyl applied to windows.  
Scale 1:10



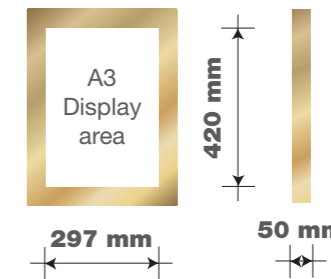
470 mm  
Height above ground: 1500mm

**ITEM 08A (Qty 1)**  
Brass menu case.  
LED illumination.  
Scale 1:20



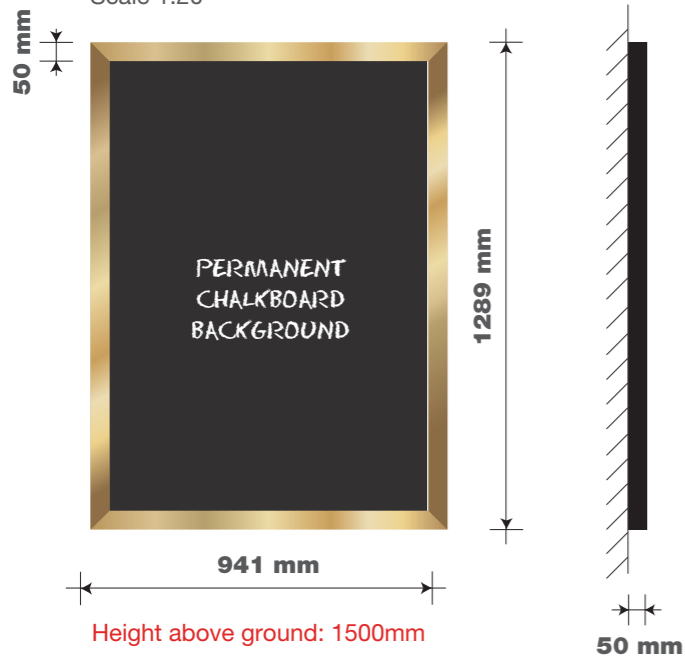
297 mm 420 mm 50 mm  
Height above ground: 1500mm

**ITEM 08B (Qty 1)**  
Brass menu case.  
LED illumination.  
Scale 1:20



297 mm 420 mm 50 mm  
Height above ground: 1500mm

**ITEM 09 (Qty 1)**  
Brass poster frame, with a permanent chalkboard background.  
Supplied with an extra double sided chalkboard or corex insert.  
Scale 1:20



941 mm  
Height above ground: 1500mm

**ITEM 10 (Qty 6)**  
Narrow beam LED spotlights



Height above ground: 5000mm

**ITEM 11 (Qty 1)**  
**DELETED**

GREENE KING  
**RISING SUN**  
46 TOTENHAM COURT RD,  
LONDON,  
W1T 2ED

**124046 (REV A)**  
02/12/16 - MKF



# EXISTING



GREENE KING  
**RISING SUN**  
46 TOTENHAM COURT RD,  
LONDON,  
W1T 2ED

**124046 (REV A)**  
02/12/16 - MKF

**!a**  
ashleighsigns.co.uk



# PROPOSED



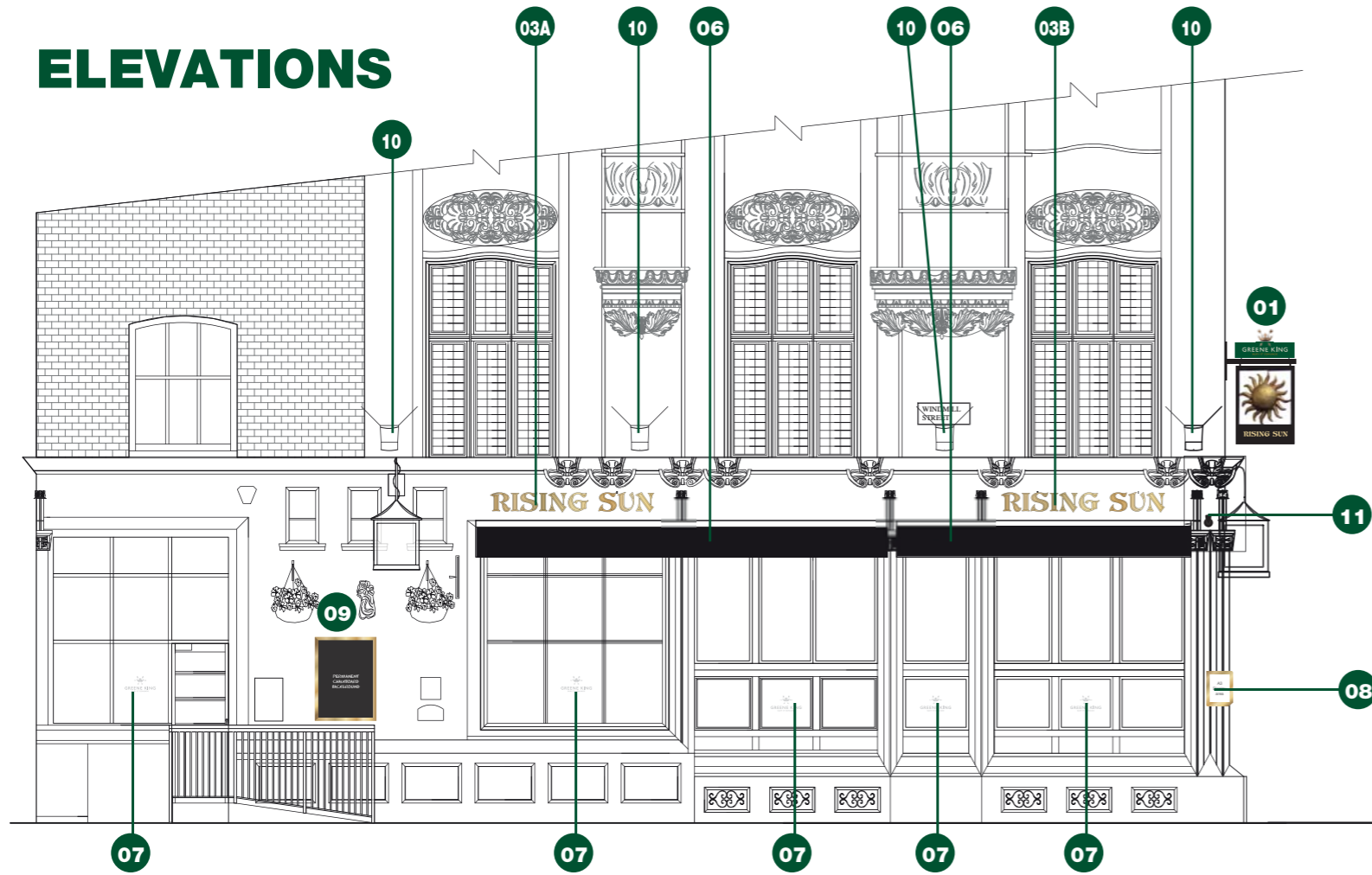
GREENE KING  
**RISING SUN**  
46 TOTENHAM COURT RD,  
LONDON,  
W1T 2ED

**124046 (REV A)**  
02/12/16 - MKF

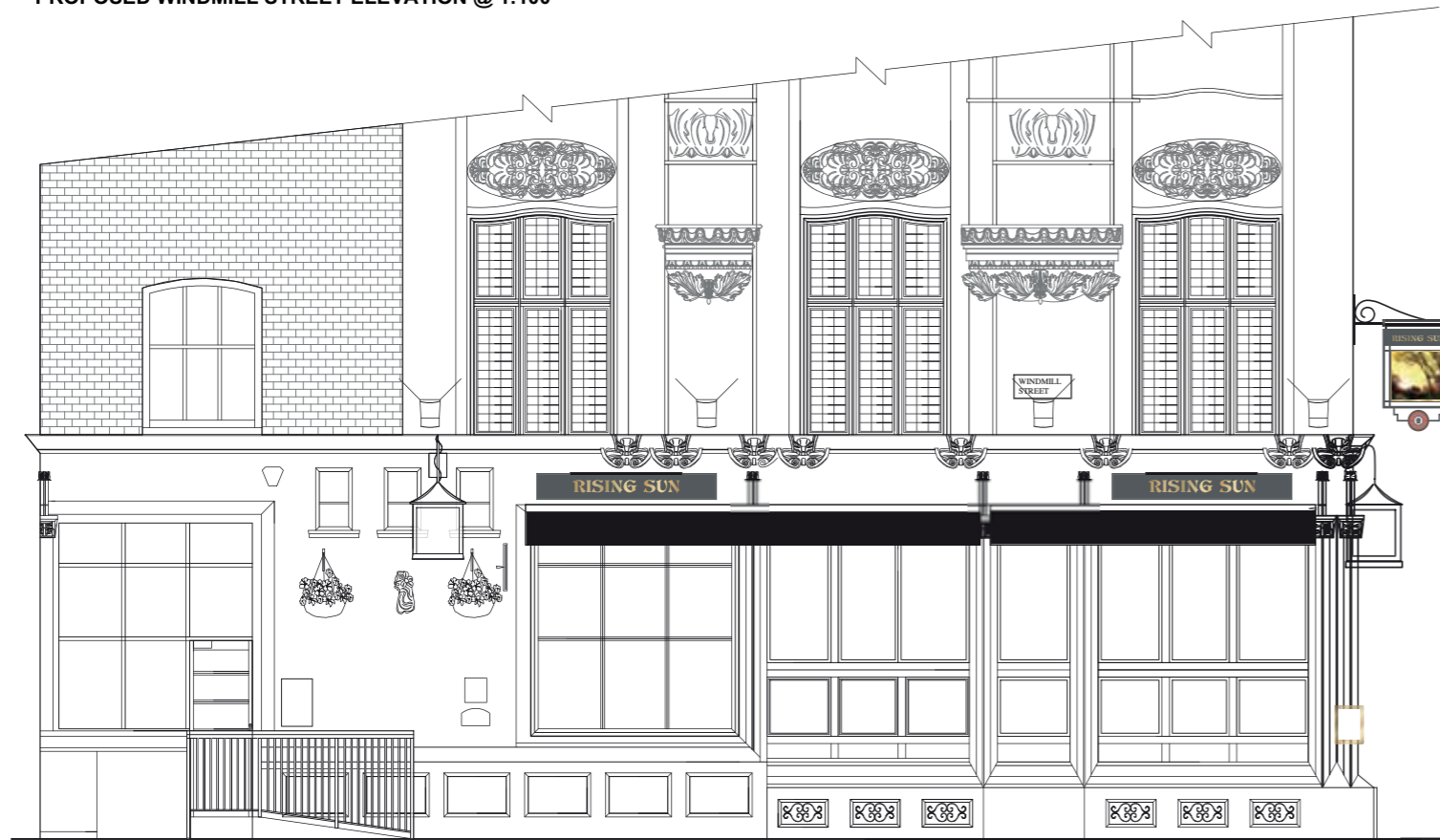
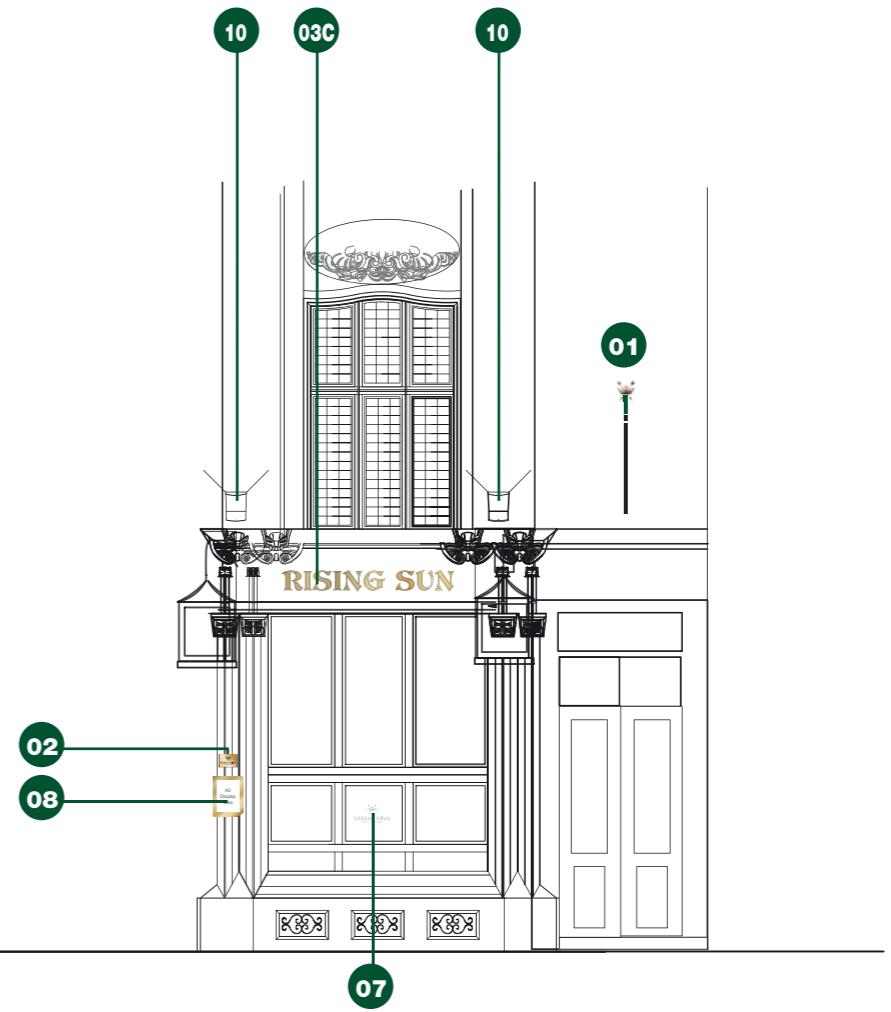
**!a**  
ashleighsigns.co.uk



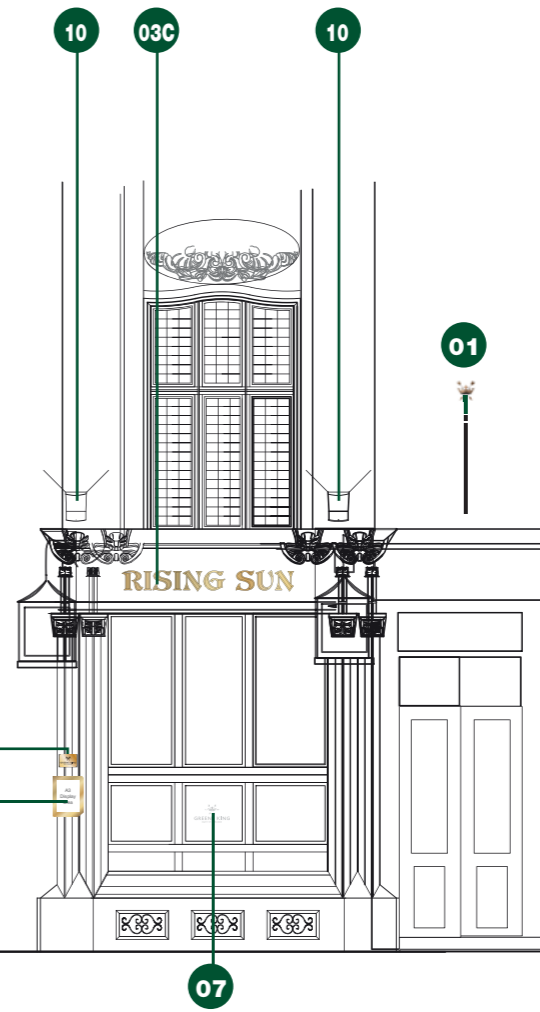
# ELEVATIONS



PROPOSED WINDMILL STREET ELEVATION @ 1:100



EXISTING WINDMILL STREET ELEVATION @ 1:100

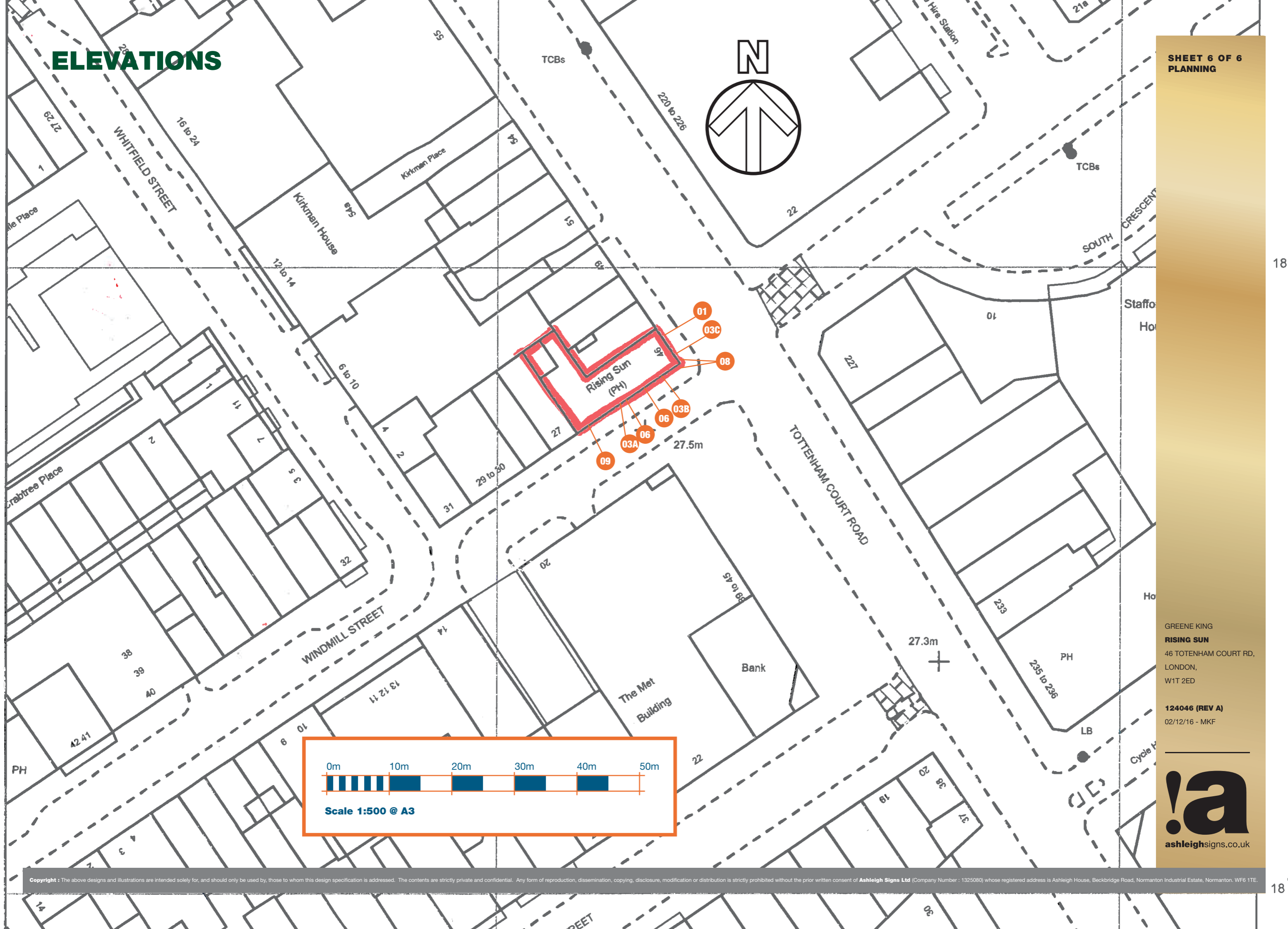


GREENE KING  
**RISING SUN**  
46 TOTENHAM COURT RD,  
LONDON,  
W1T 2ED

**124046 (REV A)**  
02/12/16 - MKF



# ELEVATIONS



0m 10m 20m 30m 40m 50m

Scale 1:500 @ A3

GREENE KING  
**RISING SUN**  
46 TOTENHAM COURT RD,  
LONDON,  
W1T 2ED

**124046 (REV A)**  
02/12/16 - MKF

**!a**  
ashleighsigns.co.uk