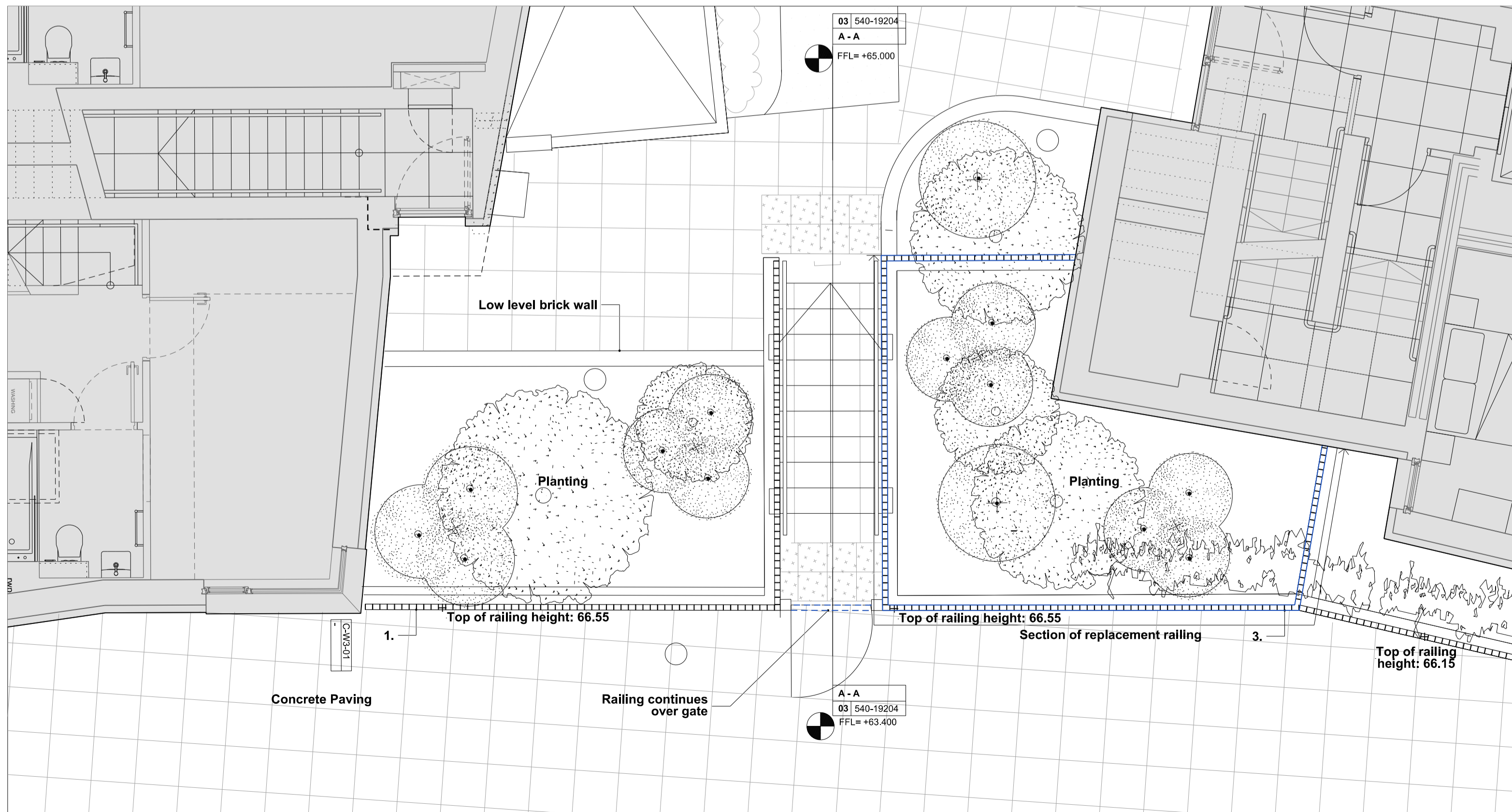


East Elevation of Chester and Balmore Blocks 1:50

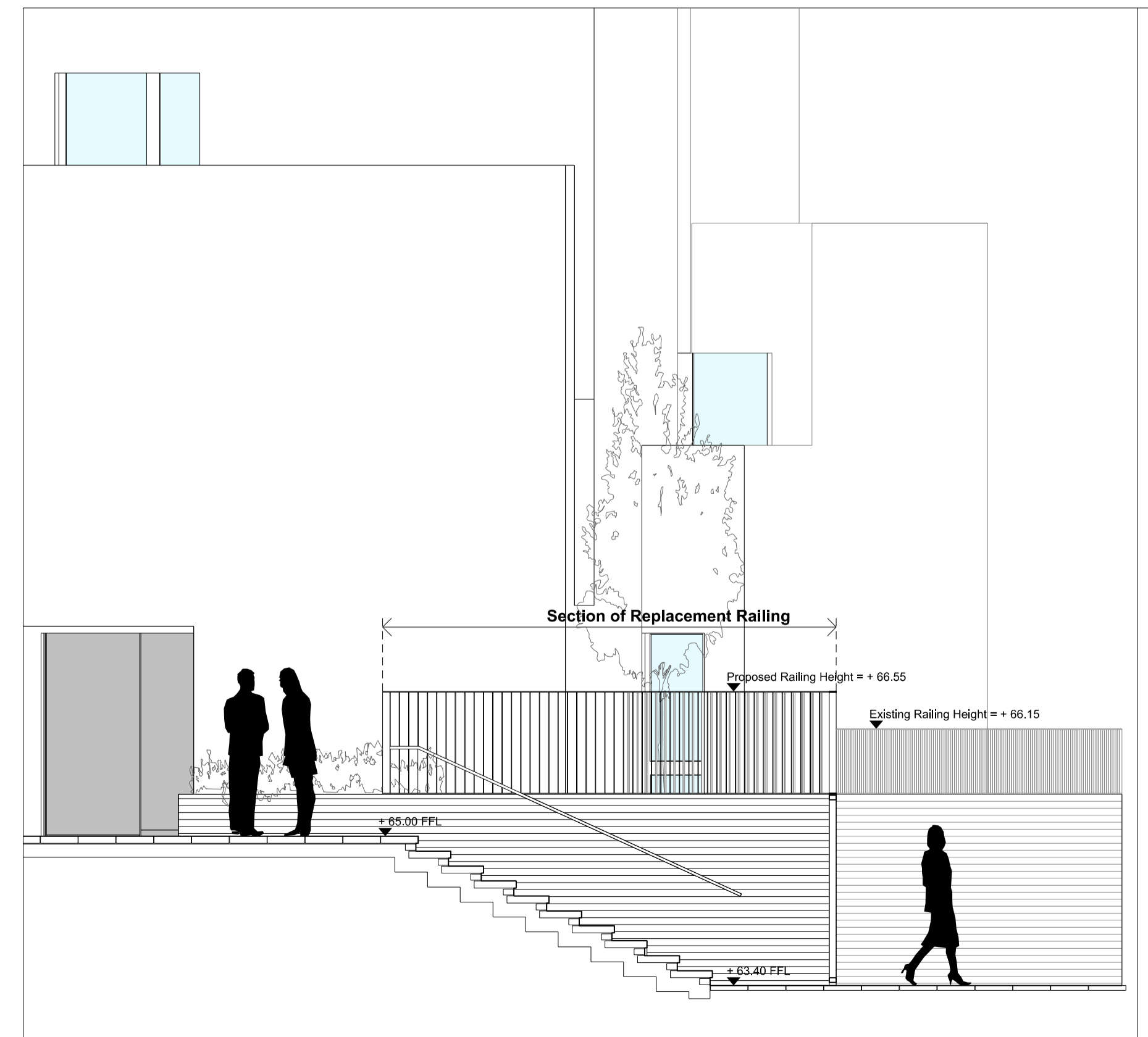
NOTES
DO NOT SCALE FROM THIS DRAWING.
CONTRACTOR TO CHECK ALL DIMENSIONS ON SITE.
ANY DISCREPANCIES TO BE REPORTED TO THE ARCHITECT IMMEDIATELY.
COPYRIGHT RICK MATHER ARCHITECTS LLP ©
Text

1. Existing 1100mm height, mild steel flats fence with M10 paint finish to match windows
2. Proposed 2000mm height mild steel flats gate, with new proposed railings above, both with M10 paint finish to match windows
3. Proposed 1100mm height, mild steel flats fence with M10 paint finish to match windows

— Adjoining/Adjacent Land Owned by LBC

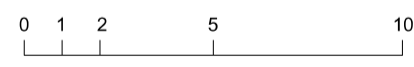


Plan of Steps up to courtyard between Chester and Balmore Blocks



Section AA through steps between Chester and Balmore Blocks

REVISIONS	PL1	02.12.16	ISSUED FOR PLANNING
	P1	17.10.16	ISSUED FOR COMMENT
REV	DATE	DESCRIPTION	



INFORMATION

RICK MATHER ARCHITECTS ©
123 Camden High Street London NW1 7JR
T: 020 7284 1727 F: 020 7287 7626
info@rickmather.com www.rickmather.com

JOB
CHESTER BALMORE
Highgate, London

TITLE
Proposed
Elevation and Section

DRAWN	RM	JOB #	540	DRG #	19211	REV	PL1
CHECKED	TP	SCALE@A1	1:200	SIZE	A1	DATE	DEC 16 02.12.16