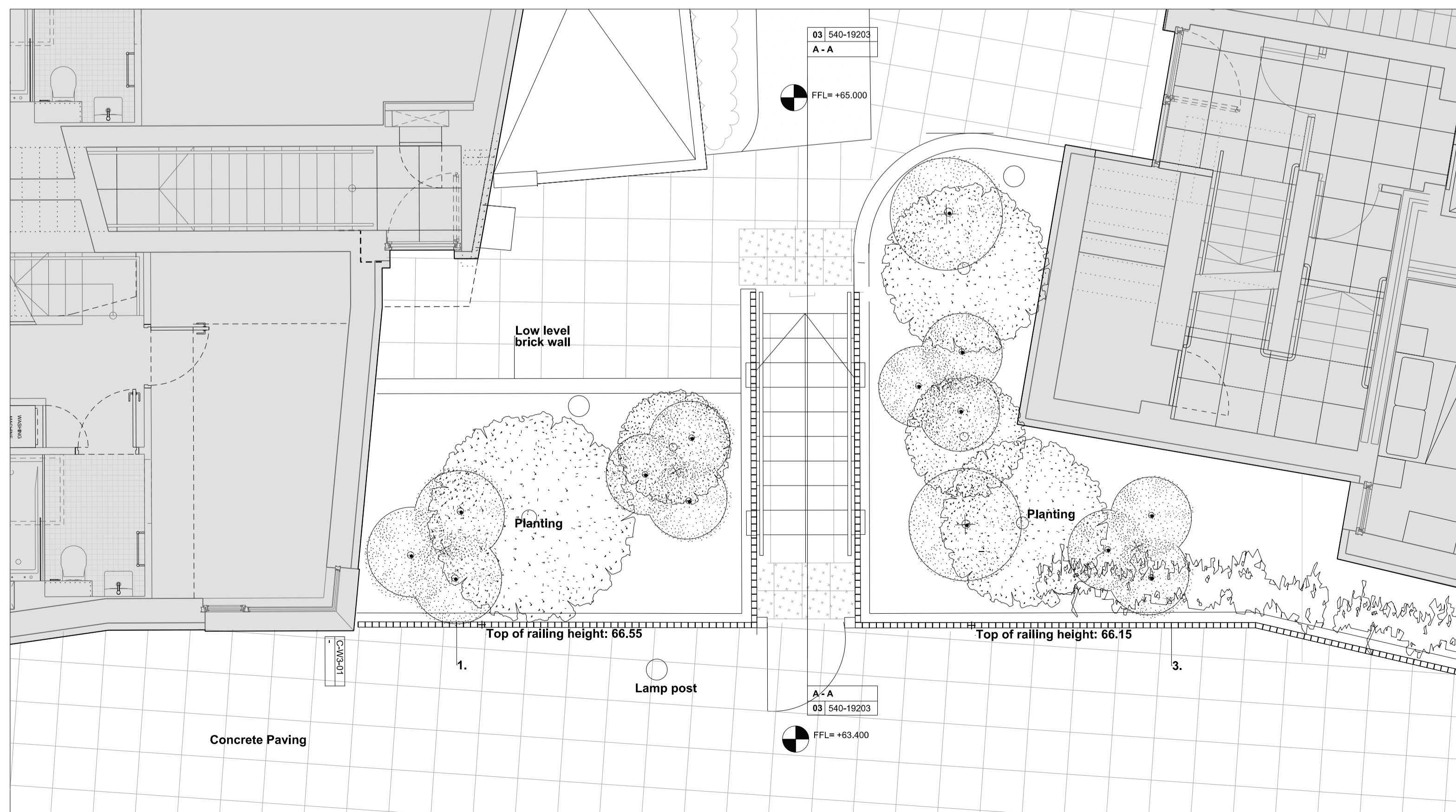


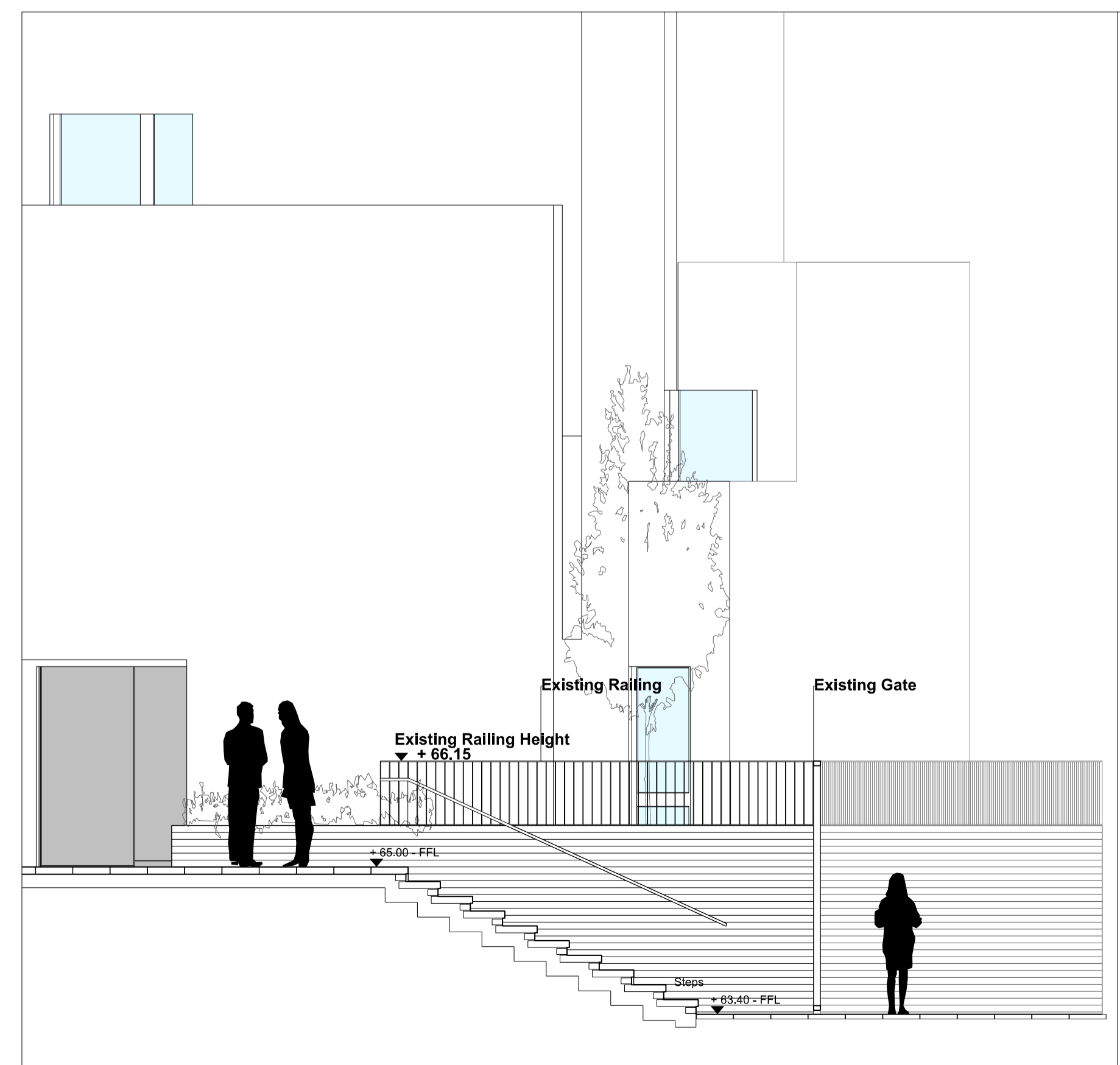
East Elevation of Chester and Balmore Blocks 1:50

NOTES
 DO NOT SCALE FROM THIS DRAWING.
 CONTRACTOR TO CHECK ALL DIMENSIONS ON SITE.
 ANY DISCREPANCIES TO BE REPORTED TO THE ARCHITECT IMMEDIATELY.
 COPYRIGHT RICK MATHER ARCHITECTS LLP ©
 Text

1. 1100mm height, mild steel flats fence with M10 paint finish to match windows
2. Mild steel flats gate with M10 paint finish to match windows
3. 700mm height, mild steel flats fence with M10 paint finish to match windows

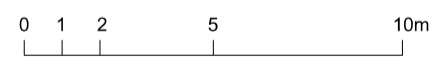


Plan of Steps up to courtyard between Chester and Balmore Blocks



Section AA through steps between Chester and Balmore Blocks

REVISIONS	PL1	02.12.16	ISSUED FOR PLANNING
	P1	17.10.16	ISSUED FOR COMMENT
	REV	DATE	DESCRIPTION



INFORMATION

RICK MATHER ARCHITECTS ©
 123 Camden High Street London NW1 7JR
 T: 020 7284 1727 F: 020 7287 7626
 info@rickmather.com www.rickmather.com

JOB
CHESTER BALMORE
 Highgate, London

TITLE
 Existing
 Elevation and Section

DRAWN	RM	JOB #	540	DRG #	19210	REV	PL1
CHECKED	TP	SCALE@A1	1:200	SIZE	A1	DATE	DEC 16 02.12.16