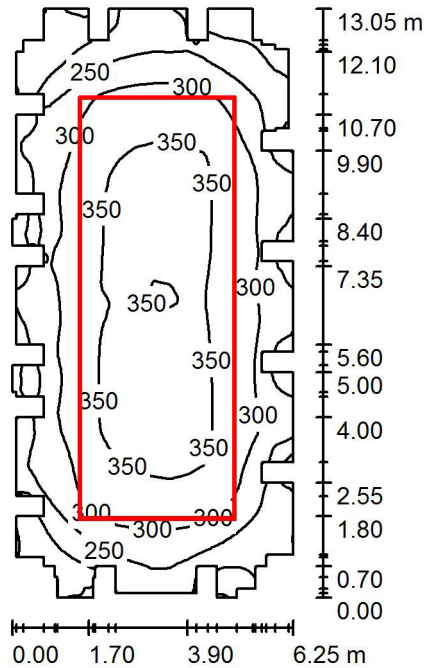


Optelma Lighting

14 Napier Court, The Science Park
Abingdon, OX14 3YT

Operator Dan Warwick
Telephone 01235 553769
Fax
e-Mail dan@optelma.co.uk

Room 1 / Summary



Height of Room: 5.250 m, Maintenance factor: 0.80

Values in Lux, Scale 1:168

Surface	ρ [%]	E_{av} [lx]	E_{min} [lx]	E_{max} [lx]	$u0$
Workplane	/	295	136	360	0.461
Floor	20	261	122	323	0.466
Ceiling	70	313	72	462	0.231
Walls (90)	50	150	43	441	/

Workplane:

Height: 0.750 m
Grid: 128 x 128 Points
Boundary Zone: 0.000 m

Illuminance Quotient (according to LG7): Walls / Working Plane: 0.526, Ceiling / Working Plane: 1.062.

Luminaire Parts List

No.	Pieces	Designation (Correction Factor)	Φ (Luminaire) [lm]	Φ (Lamps) [lm]	P [W]
1	44	Versa Engineering Q46 Opal Quad 46 (1.000)	1325	2600	18.0
			Total: 58285	Total: 114400	792.0

Specific connected load: $10.84 \text{ W/m}^2 = 3.68 \text{ W/m}^2/100 \text{ lx}$ (Ground area: 73.08 m^2)

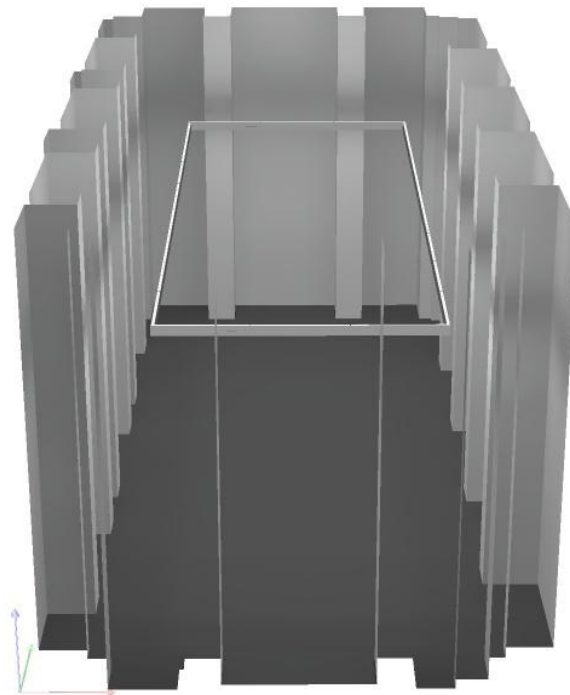


Optelma Lighting

14 Napier Court, The Science Park
Abingdon, OX14 3YT

Operator Dan Warwick
Telephone 01235 553769
Fax
e-Mail dan@optelma.co.uk

Room 1 / 3D Rendering



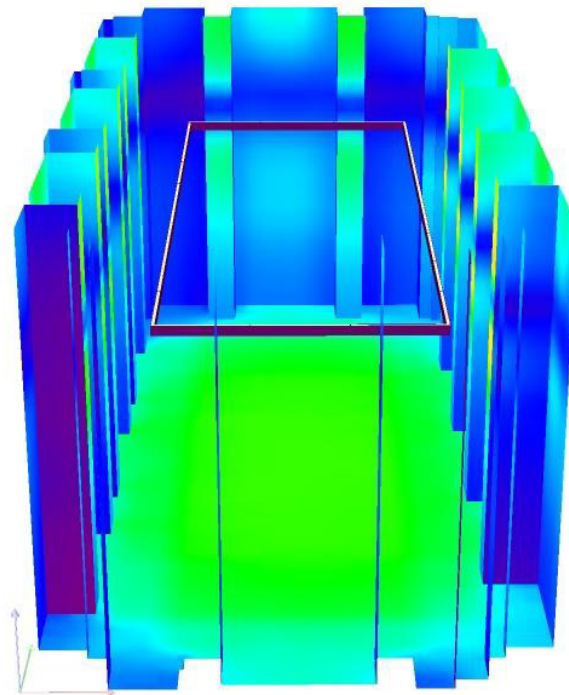


Optelma Lighting

14 Napier Court, The Science Park
Abingdon, OX14 3YT

Operator Dan Warwick
Telephone 01235 553769
Fax
e-Mail dan@optelma.co.uk

Room 1 / False Colour Rendering



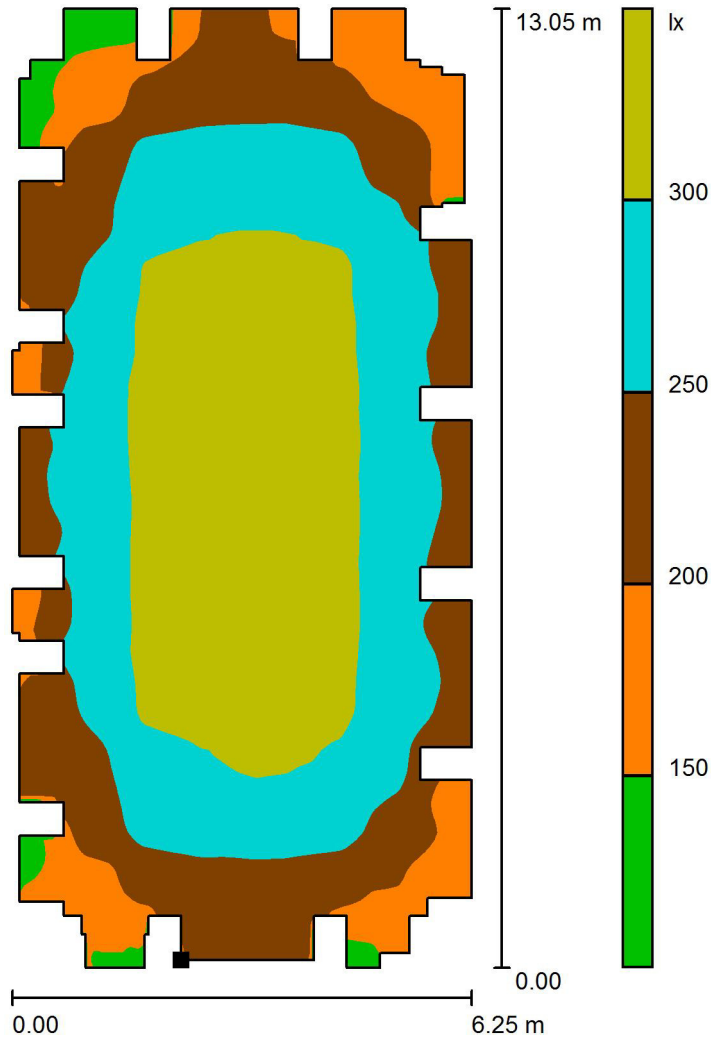
0 50 100 200 300 400 500 750 1000

lx

Optelma Lighting
 14 Napier Court, The Science Park
 Abingdon, OX14 3YT

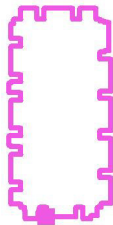
Operator Dan Warwick
 Telephone 01235 553769
 Fax
 e-Mail dan@optelma.co.uk

Room 1 / Floor / Greyscale (E)



Scale 1 : 103

Position of surface in room:
 Marked point:
 (2.300 m, 0.163 m, 0.000 m)



Grid: 128 x 128 Points

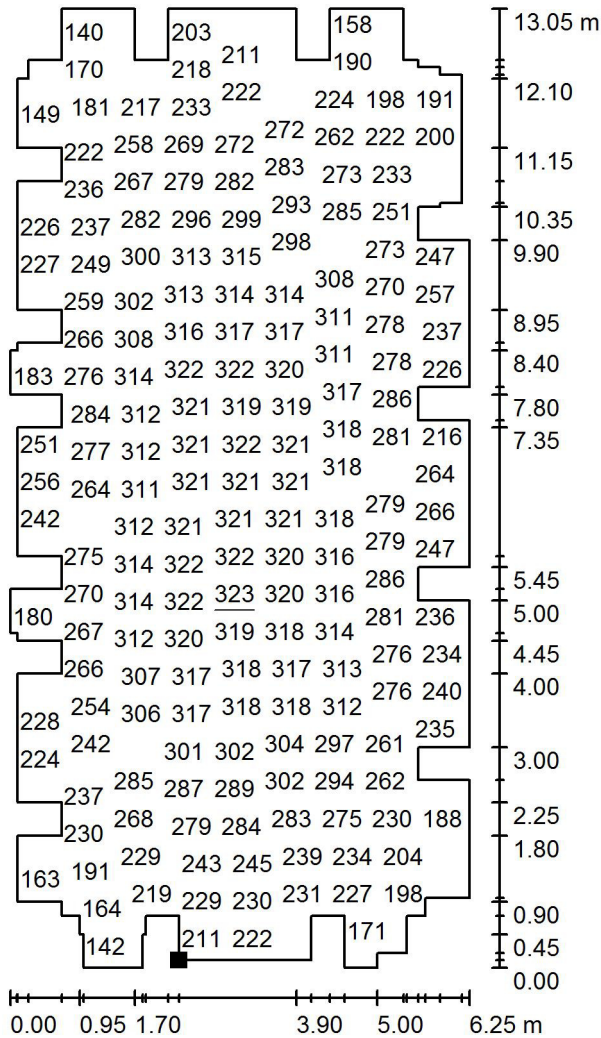
E_{av} [lx]	E_{min} [lx]	E_{max} [lx]	u_0	E_{min} / E_{max}
261	122	323	0.466	0.378

Optelma Lighting

14 Napier Court, The Science Park
Abingdon, OX14 3YT

Operator Dan Warwick
Telephone 01235 553769
Fax
e-Mail dan@optelma.co.uk

Room 1 / Floor / Value Chart (E)



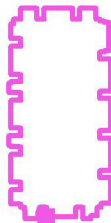
Values in Lux, Scale 1 : 103

Not all calculated values could be displayed.

Position of surface in room:

Marked point:

(2.300 m, 0.163 m, 0.000 m)



Grid: 128 x 128 Points

E_{av} [lx]
261

E_{min} [lx]
122

E_{max} [lx]
323

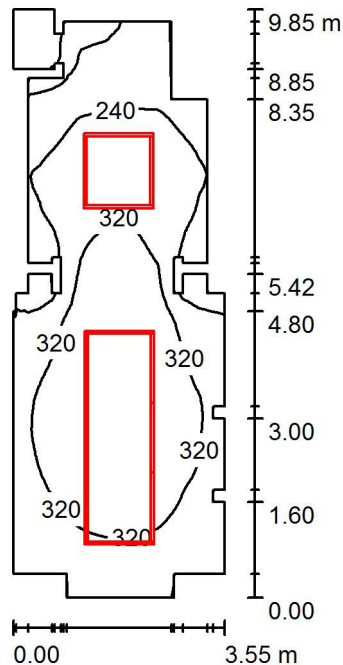
u_0
0.466

E_{min} / E_{max}
0.378

Optelma Lighting
 14 Napier Court, The Science Park
 Abingdon, OX14 3YT

Operator Dan Warwick
 Telephone 01235 553769
 Fax
 e-Mail dan@optelma.co.uk

Room 2 / Summary



Height of Room: 5.250 m, Maintenance factor: 0.80

Values in Lux, Scale 1:127

Surface	ρ [%]	E_{av} [lx]	E_{min} [lx]	E_{max} [lx]	u0
Workplane	/	288	31	398	0.106
Floor	20	242	31	318	0.129
Ceiling	70	377	24	600	0.063
Walls (50)	50	176	11	457	/

Workplane:

Height: 0.750 m
 Grid: 128 x 128 Points
 Boundary Zone: 0.000 m

Illuminance Quotient (according to LG7): Walls / Working Plane: 0.643, Ceiling / Working Plane: 1.307.

Luminaire Parts List

No.	Pieces	Designation (Correction Factor)	Φ (Luminaire) [lm]	Φ (Lamps) [lm]	P [W]
1	24	Versa Engineering Q46 Opal Quad 46 (1.000)	1325	2600	18.0
			Total: 31792	Total: 62400	432.0

Specific connected load: $14.37 \text{ W/m}^2 = 4.98 \text{ W/m}^2/100 \text{ lx}$ (Ground area: 30.06 m^2)

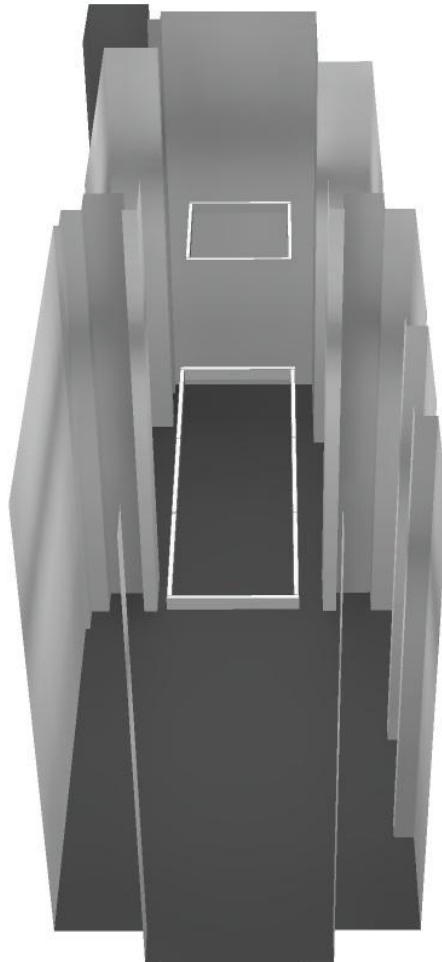


Optelma Lighting

14 Napier Court, The Science Park
Abingdon, OX14 3YT

Operator Dan Warwick
Telephone 01235 553769
Fax
e-Mail dan@optelma.co.uk

Room 2 / 3D Rendering



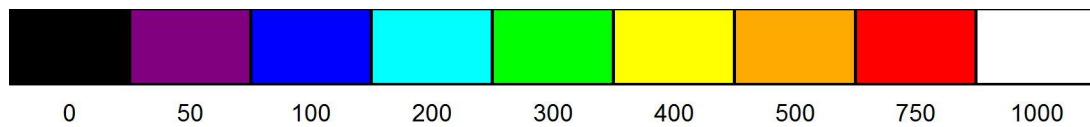
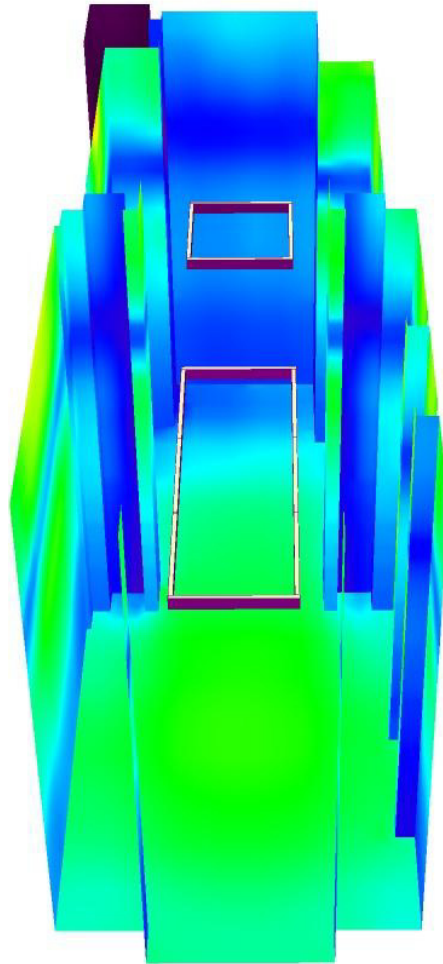


Optelma Lighting

14 Napier Court, The Science Park
Abingdon, OX14 3YT

Operator Dan Warwick
Telephone 01235 553769
Fax
e-Mail dan@optelma.co.uk

Room 2 / False Colour Rendering

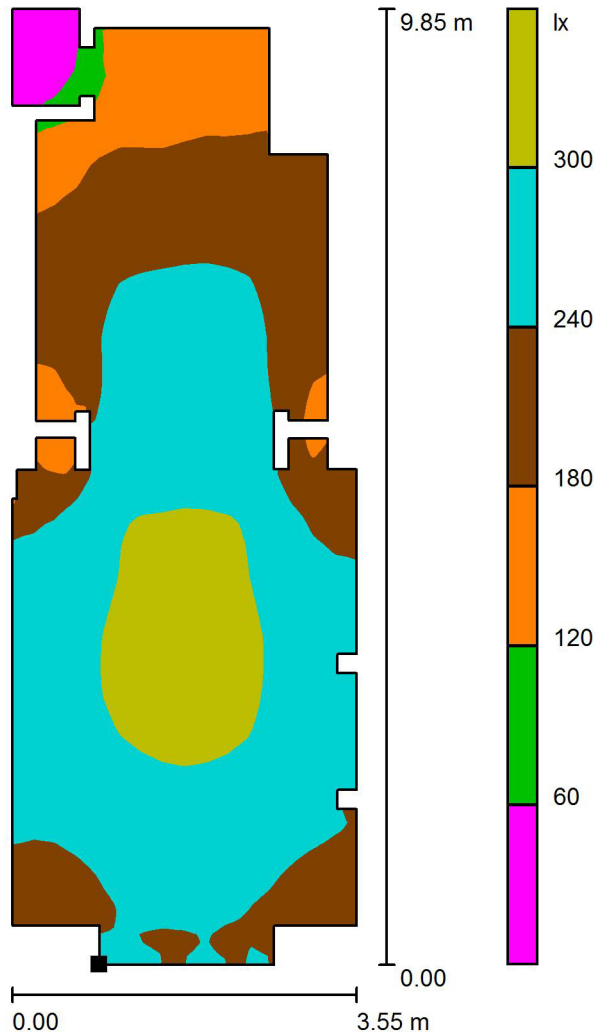


lx

Optelma Lighting
 14 Napier Court, The Science Park
 Abingdon, OX14 3YT

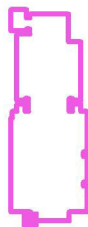
Operator Dan Warwick
 Telephone 01235 553769
 Fax
 e-Mail dan@optelma.co.uk

Room 2 / Floor / Greyscale (E)



Scale 1 : 78

Position of surface in room:
 Marked point:
 (10.687 m, 0.012 m, 0.000 m)



Grid: 128 x 128 Points

E_{av} [lx]
 242

E_{min} [lx]
 31

E_{max} [lx]
 318

u_0
 0.129

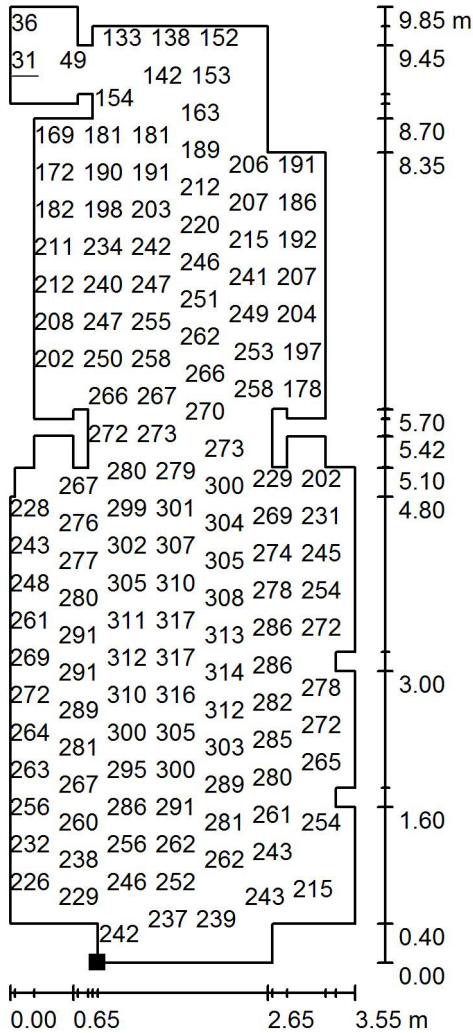
E_{min} / E_{max}
 0.098

Optelma Lighting

14 Napier Court, The Science Park
Abingdon, OX14 3YT

Operator Dan Warwick
Telephone 01235 553769
Fax
e-Mail dan@optelma.co.uk

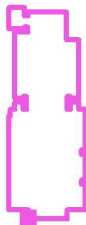
Room 2 / Floor / Value Chart (E)



Values in Lux, Scale 1 : 78

Not all calculated values could be displayed.

Position of surface in room:
Marked point:
(10.687 m, 0.012 m, 0.000 m)



Grid: 128 x 128 Points

E_{av} [lx]	E_{min} [lx]	E_{max} [lx]	u0	E_{min} / E_{max}
242	31	318	0.129	0.098