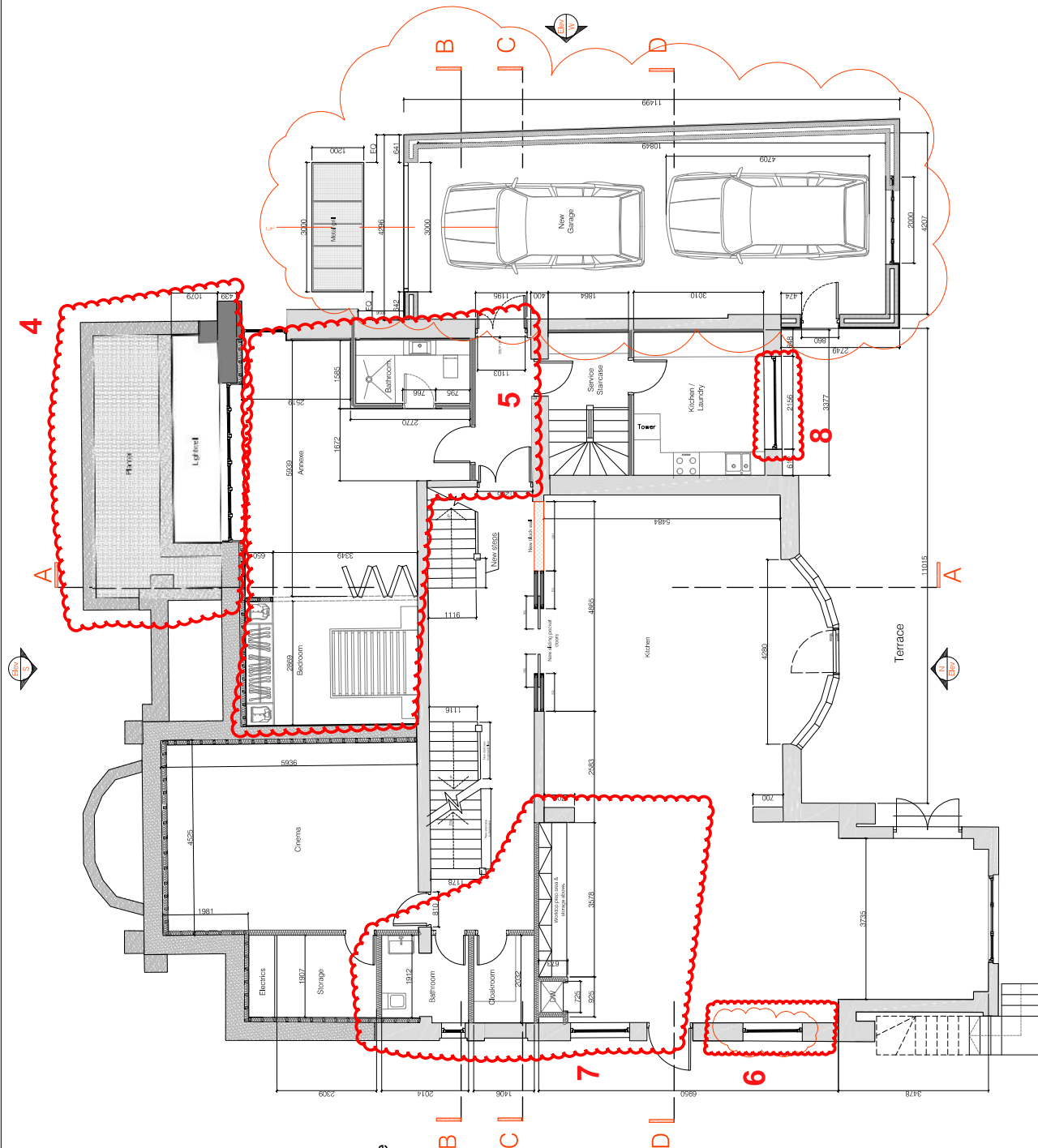


NOTES:
This drawing was approved by Planning Permission 2014/5705/P but was implemented with minor alterations as annotated below.

LEGEND:
Minor alterations to Approved Plans, Elevations and Sections during the course of construction:

- Basement**
- 1** Internal compartmentation of ancillary areas reviewed;
 - 2** Relocation and resizing of access hatch to Pool Plant Room;
 - 3** Addition of 3rd skylight on Pool roof (Roof Terrace above);
- Lower Ground Floor**
- 4** Omission of planter and associated lightwell in front of Guest Bedroom fenestration, so that the latter opens onto forecourt at front (associated with driveway); new planter by main entrance;
 - 5** Review of layout of Guest Bedroom and Ensuite Bathroom and omission of small window on side facade;
 - 6** Dining Room window on side facade omitted;
 - 7** Bathroom, Cloakroom, ancillary facilities and access to Dining Room from central corridor reviewed; side entrance door relocated and adjoining window reduced in size;
 - 8** Kitchen/Laundry fenestration reviewed to include door giving access to terrace.
- Side Elevations and Sections**
- Pl. refer to annotations 1-7 above



LOWER GROUND FLOOR PLAN Proposed

Revision notes :
01 - Sliding pocket doors added to kitchen area
02 - Garage opening width amended
Window added to kitchen.

04/09/14
05/09/14

Project Title 69 Redington Rd Refurbish and Extension
Site Address 69 Redington Road, London NW3 7RP
Drawing Title Proposed Lower Ground Floor
Drawing No. 69RR_GA_PR_LGF
Date 03 September 2014
Scale 1:100@A3

Approved by 2014/5705/P*
Revision 02

0 1 2 3 4 5 10
*Notes, Legend and Annotations added in September 2016

NOTES:
This drawing was approved by Planning Permission 2014/5705/P but was implemented with minor alterations as annotated below.

LEGEND:
Minor alterations to Approved Plans, Elevations and Sections during the course of construction:

Basement

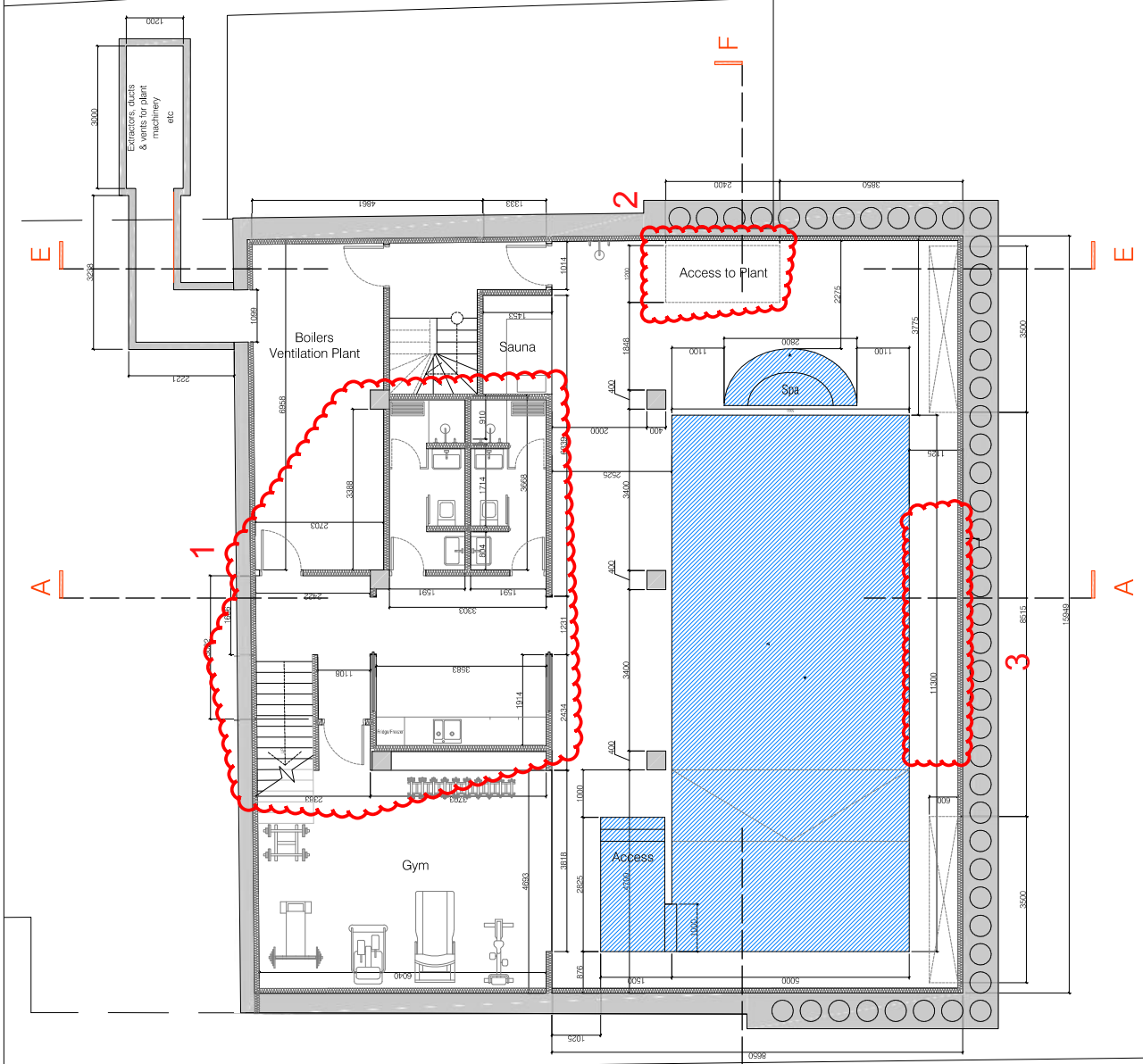
- 1** Internal compartmentation of ancillary areas reviewed;
- 2** Relocation and resizing of access hatch to Pool Plant Room;
- 3** Addition of 3rd skylight on Pool roof (Roof Terrace above);

Lower Ground Floor

- 4** Omission of planter and associated lightwell in front of Guest Bedroom fenestration, so that the latter opens onto forecourt at front (associated with driveway); new planter by main entrance;
- 5** Review of layout of Guest Bedroom and Ensuite Bathroom and omission of small window on side facade;
- 6** Dining Room window on side facade omitted;
- 7** Bathroom, Cloakroom, ancillary facilities and access to Dining Room from central corridor reviewed; side entrance door relocated and adjoining window reduced in size;
- 8** Kitchen/Laundry fenestration reviewed to include door giving access to terrace.

Side Elevations and Sections

Pl. refer to annotations 1-7 above



BASEMENT PLAN proposed 1:100@A3

Revision notes :

Project Title	69 Redgion Rd Refurbish and Extension
Site Address	69 Redgion Road, London NW3 7RP
Drawing Title	Proposed Basement Plan Approved by 2014/5705/P*
Drawing No.	69RR_GA_PR_BASE
Date	03 September 2014
Revision	Revision
Scale	1:100@A3

NOTE: All dimensions to be checked on site

*Notes, Legend and Annotations added in September 2016

NOTES:

This drawing was approved by Planning Permission 2014/5705/P but was implemented with minor alterations as annotated below.

LEGEND:

Minor alterations to Approved Plans, Elevations and Sections during the course of construction:

Basement

- 1** Internal compartmentation of ancillary areas reviewed;
- 2** Relocation and resizing of access hatch to Pool Plant Room;
- 3** Addition of 3rd skylight on Pool roof (Roof Terrace above);

Lower Ground Floor

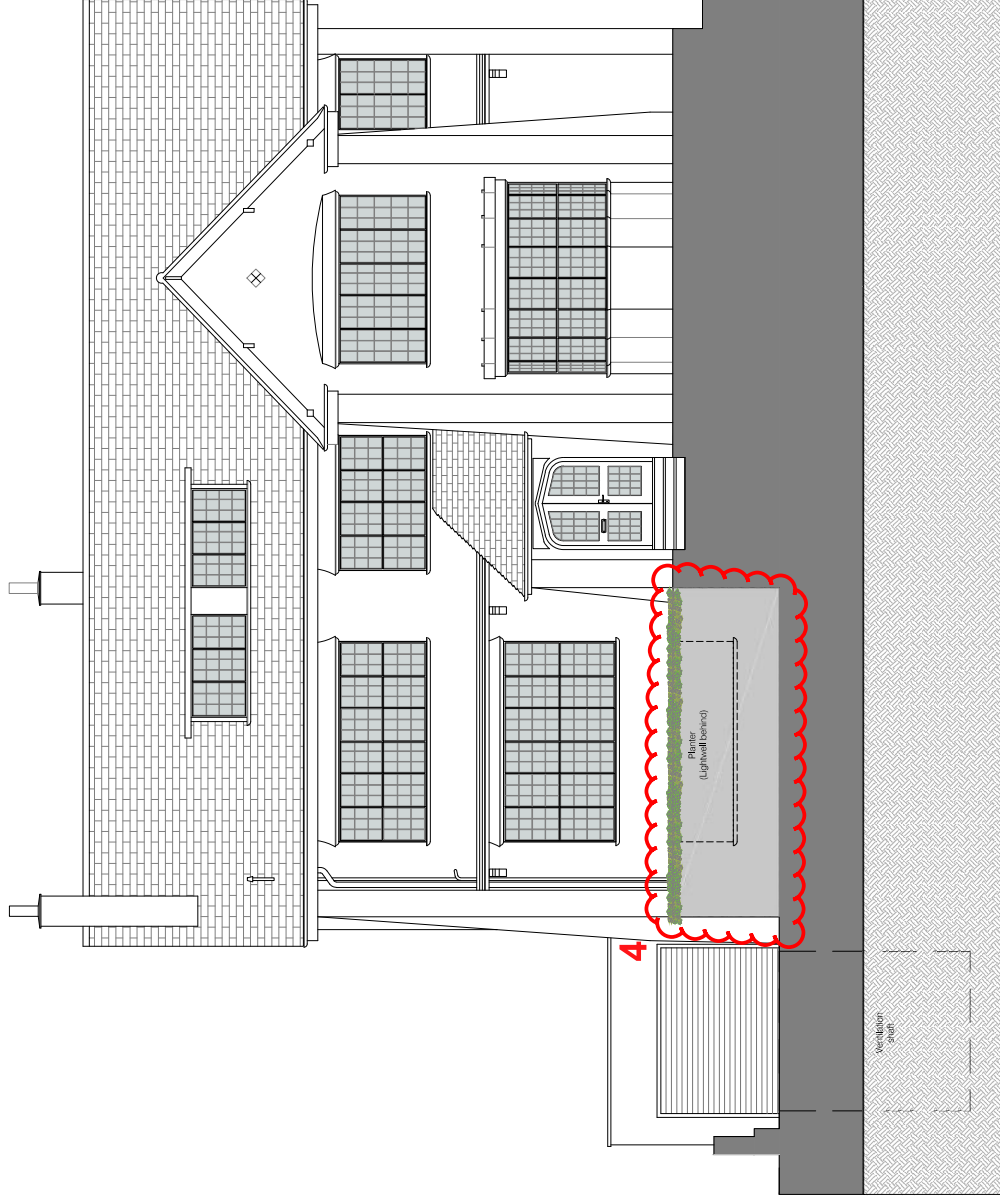
4 Omission of planter and associated lightwell in front of Guest Bedroom fenestration, so that the latter opens onto forecourt at front (associated with driveway); new planter by main entrance;

5 Review of layout of Guest Bedroom and Ensuite Bathroom and omission of small window on side facade;

6 Dining Room window on side facade omitted;

7 Bathroom, Cloakroom, ancillary facilities and access to Dining Room from central corridor reviewed; side entrance door relocated and adjoining window reduced in size;

8 Kitchen/Laundry fenestration reviewed to include door giving access to terrace.



South Elevation B

Side Elevations and Sections

Pl. refer to annotations 1-7 above

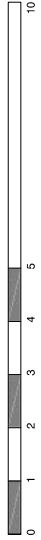
SOUTH ELEVATION B

Proposed

Revision notes :



Project Title	68 Redgion Rd Refurbish and Extension
Site Address	68 Redgion Road, London NW3 7RP
Drawing Title	Proposed South Elevation B
Drawing No.	69RR_PR_SLV_02
Date	04 September 2014
Revision	Approved by 2014/5705/P*
Scale	1:100@A3



Notes, Legend and Annotation added in September 2016

LEGEND:

r Approved Orangerery not shown

NOTES:

This drawing was approved by Planning Permission 2014/5705/P but was implemented with minor alterations as annotated below.

LEGEND:

Minor alterations to Approved Plans, Elevations and Sections during the course of construction:

Basement

- 1** Internal compartmentation of ancillary areas reviewed;
- 2** Relocation and resizing of access hatch to Pool Plant Room;
- 3** Addition of 3rd skylight on Pool roof (Roof Terrace above);

Lower Ground Floor

4 Omission of planter and associated lightwell in front of Guest Bedroom fenestration, so that the latter opens onto forecourt at front (associated with driveway); new planter by main entrance;

5 Review of layout of Guest Bedroom and Ensuite Bathroom and omission of small window on side facade;

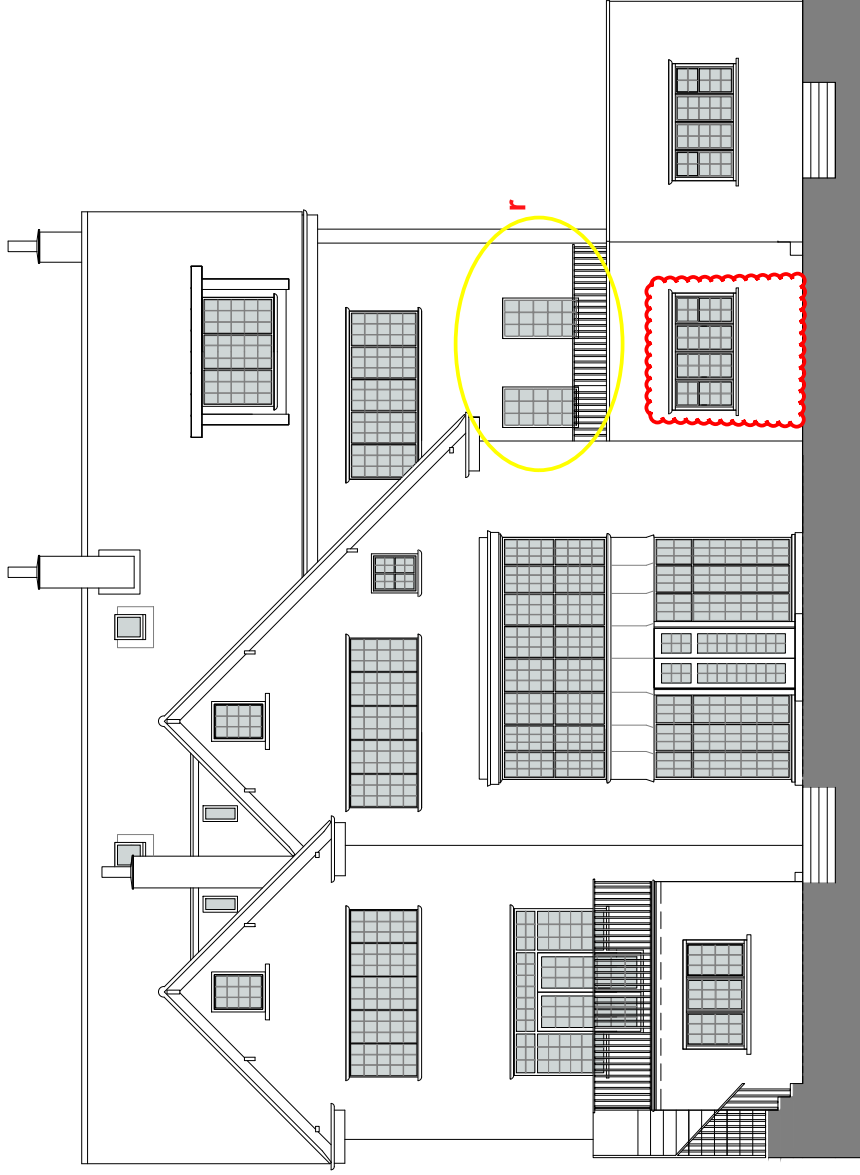
6 Dining Room window on side facade omitted;

7 Bathroom, Cloakroom, ancillary facilities and access to Dining Room from central corridor reviewed; side entrance door relocated and adjoining window reduced in size;

8 Kitchen/Laundry fenestration reviewed to include door giving access to terrace.

Side Elevations and Sections

Pl. refer to annotations 1-7 above



North Elevation

NORTH ELEVATION

Proposed

Revision notes :

Project Title	68 Redgion Rd Refurbish and Extension
Site Address	68 Redgion Road, London NW3 7RP
Drawing Title	Proposed North Elevation Approved by 2014/5705/P
Drawing No.	69RR_PR_NLV_01 Revision
Date	04 September 2014 Scale 1:100@A3

NOTES:
This drawing was approved by Planning Permission 2014/5705/P but was implemented with minor alterations as annotated below.

LEGEND:
Minor alterations to Approved Plans, Elevations and Sections during the course of construction:

Basement

- 1** Internal compartmentation of ancillary areas reviewed;
- 2** Relocation and resizing of access hatch to Pool Plant Room;
- 3** Addition of 3rd skylight on Pool roof (Roof Terrace above);

Lower Ground Floor

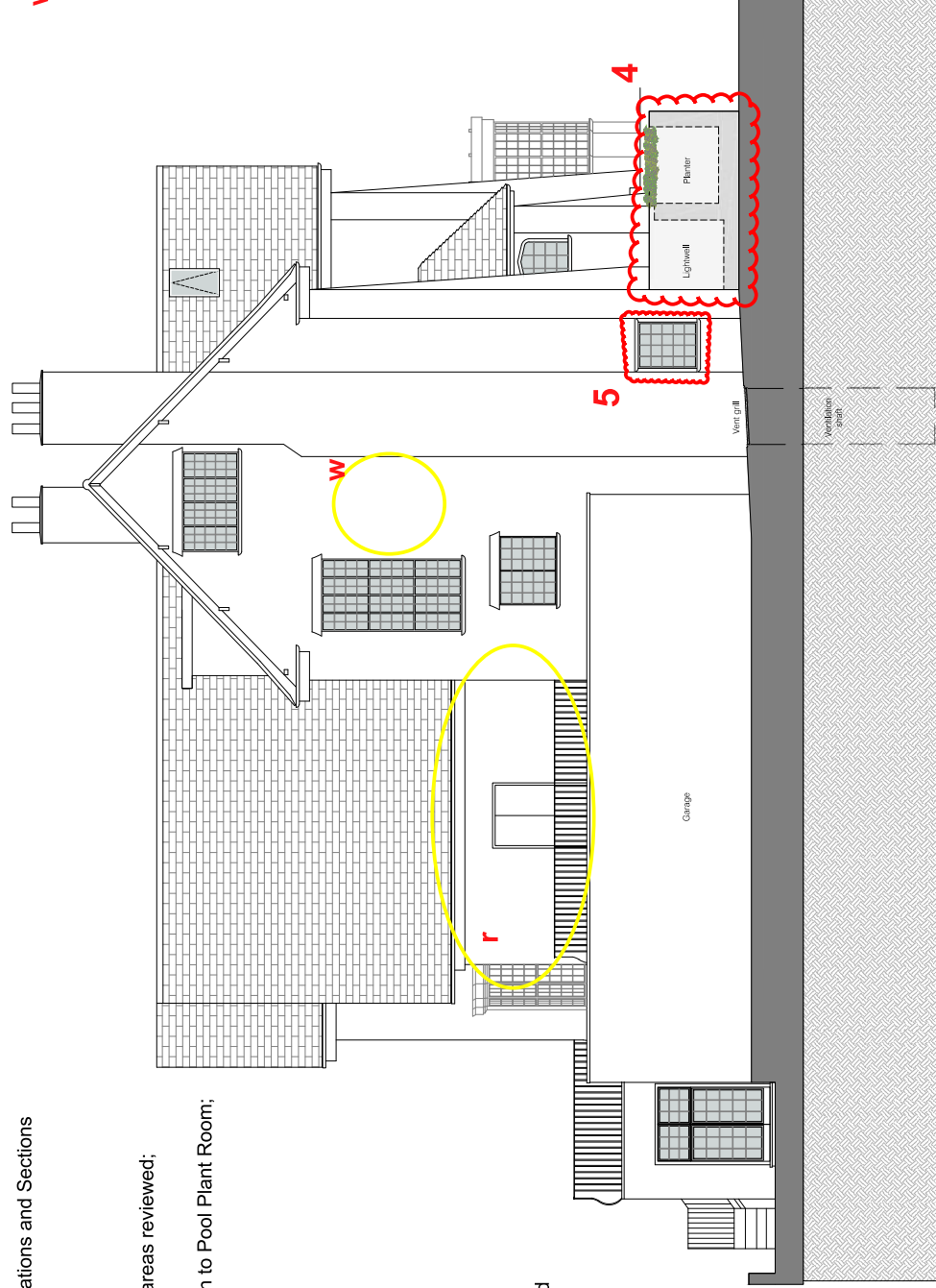
- 4** Omission of planter and associated lightwell in front of Guest Bedroom fenestration, so that the latter opens onto forecourt at front (associated with driveway); new planter by main entrance;
- 5** Review of layout of Guest Bedroom and Ensuite Bathroom and omission of small window on side facade;
- 6** Dining Room window on side facade omitted;
- 7** Bathroom, Cloakroom, ancillary facilities and access to Dining Room from central corridor reviewed; side entrance door relocated and adjoining window reduced in size;
- 8** Kitchen/Laundry fenestration reviewed to include door giving access to terrace.

Side Elevations and Sections

Pl. refer to annotations 1-7 above

LEGEND:

- r** Approved Orangery not shown
- w** Existing window not shown through oversight



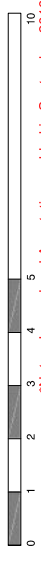
West Elevation

WEST ELEVATION

Proposed

Revision notes :

Project Title	69 Redgion Rd Refurbish and Extension
Site Address	69 Redgion Road, London NW3 7RP
Drawing Title	Proposed West Elevation Approved by 2014/5705/P
Drawing No.	69RR_PR_WLV_01 Revision
Date	04 September 2014 Scale 1:100@A3



NOTES:
 This drawing was approved by Planning Permission 2014/5705/P but was implemented with minor alterations as annotated below.

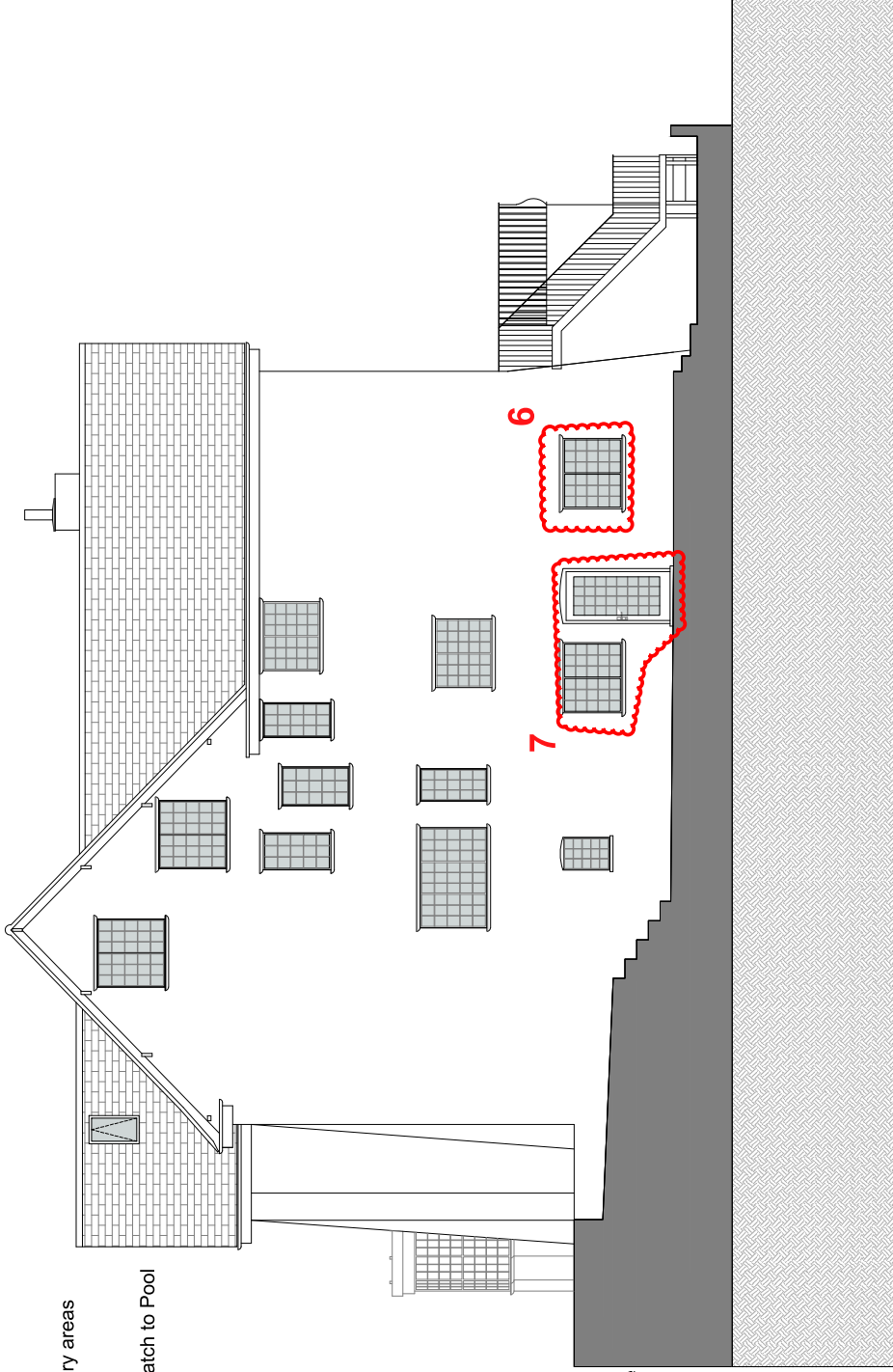
LEGEND:
 Minor alterations to Approved Plans, Elevations and Sections during the course of construction:

Basement

- 1** Internal compartmentation of ancillary areas reviewed;
- 2** Relocation and resizing of access hatch to Pool Plant Room;
- 3** Addition of 3rd skylight on Pool roof (Roof Terrace above);

Lower Ground Floor

- 4** Omission of planter and associated lightwell in front of Guest Bedroom fenestration, so that the latter opens onto forecourt at front (associated with driveway); new planter by main entrance;
- 5** Review of layout of Guest Bedroom and Ensuite Bathroom and omission of small window on side facade;
- 6** Dining Room window on side facade omitted;
- 7** Bathroom, Cloakroom, ancillary facilities and access to Dining Room from central corridor reviewed; side entrance door relocated and adjoining window reduced in size;
- 8** Kitchen/Laundry fenestration reviewed to include door giving access to terrace.



East Elevation

Side Elevations and Sections

Pl. refer to annotations 1-7 above

EAST ELEVATION Proposed

Revision notes :

Project Title	69 Redgion Rd Refurbish and Extension
Site Address	69 Redgion Road, London NW3 7RP
Drawing Title	Proposed East Elevation Approved by 2014/5705/P
Drawing No.	69RR_PR_ELV_01 Revision
Date	04 September 2014 Scale 1:100@A3

