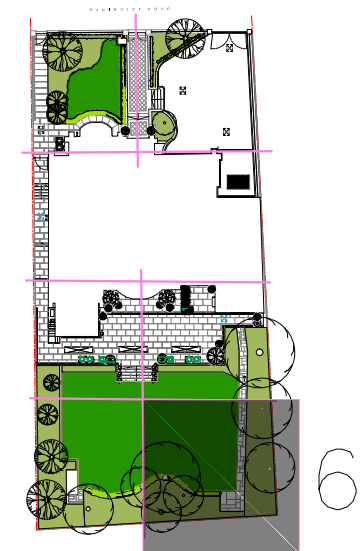


PLANTING REAR GARDEN 6

NOTES:

- 1 All dimensions are taken from Laser Surveys Ltd. drawing no. L L6934/ 1.
- 2 Tree Survey reference numbering is as referenced in MWA tree survey NW270215.01DW. All existing tree information shown on the drawing is as detailed on the MWA tree survey dated 10/03/15 reference NW270215.01DW.
- 3 Works to existing trees and felling all completed in accordance with approval 2015/5067/T with the following variations, all at the front garden:

T10 – retained; T08 – replaced with climbers as best suited to the long, shallow and narrow bed along the boundary line; T07 – not replaced so as to avoid bed overcrowding.
- 4 Condition 4 of 2014/5705/P
All trees affected by the approved excavation works were protected in accordance with guidelines and standards set out in BS5837:2012 'Trees in Relation to Construction'; pl. also refer to point 3 above.
- 5 Conditions 5 and 6 of 2014/5705/P
All works of soft and hard landscaping and of enclosure shown on the drawings are completed, with seasonal planting remaining ongoing.
- 6 The completed planting is a combination of existing well-established and new plants some of the latter in newly created beds resulting from the approved works.



FOR PLANNING-AS BUILT

Project Title	2014/5705/P - conditions 4, 5 and 6: soft and hard landscaping, enclosures	
Site Address	69 Redigton Road, London NW3 7RP	
Drawing Title	Planting: Rear Garden, 6	
Drawing No.	69RR_RRL_16152_07	Revision 0
Date	01/09/2016	
Drawn by	AG	

