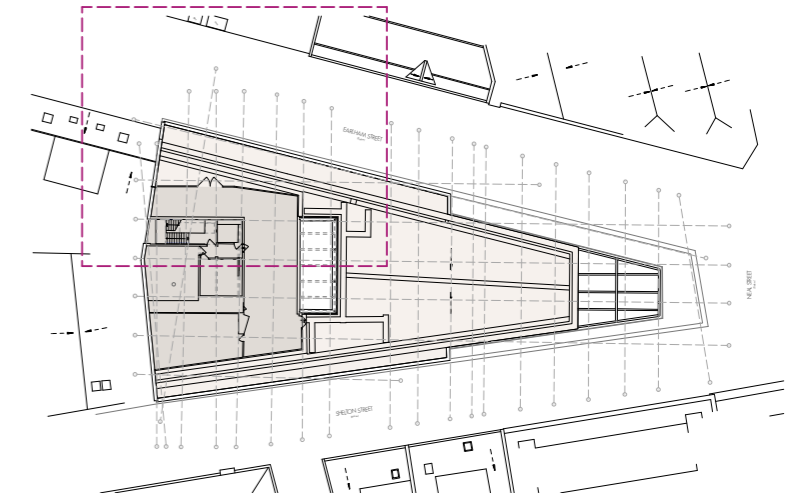
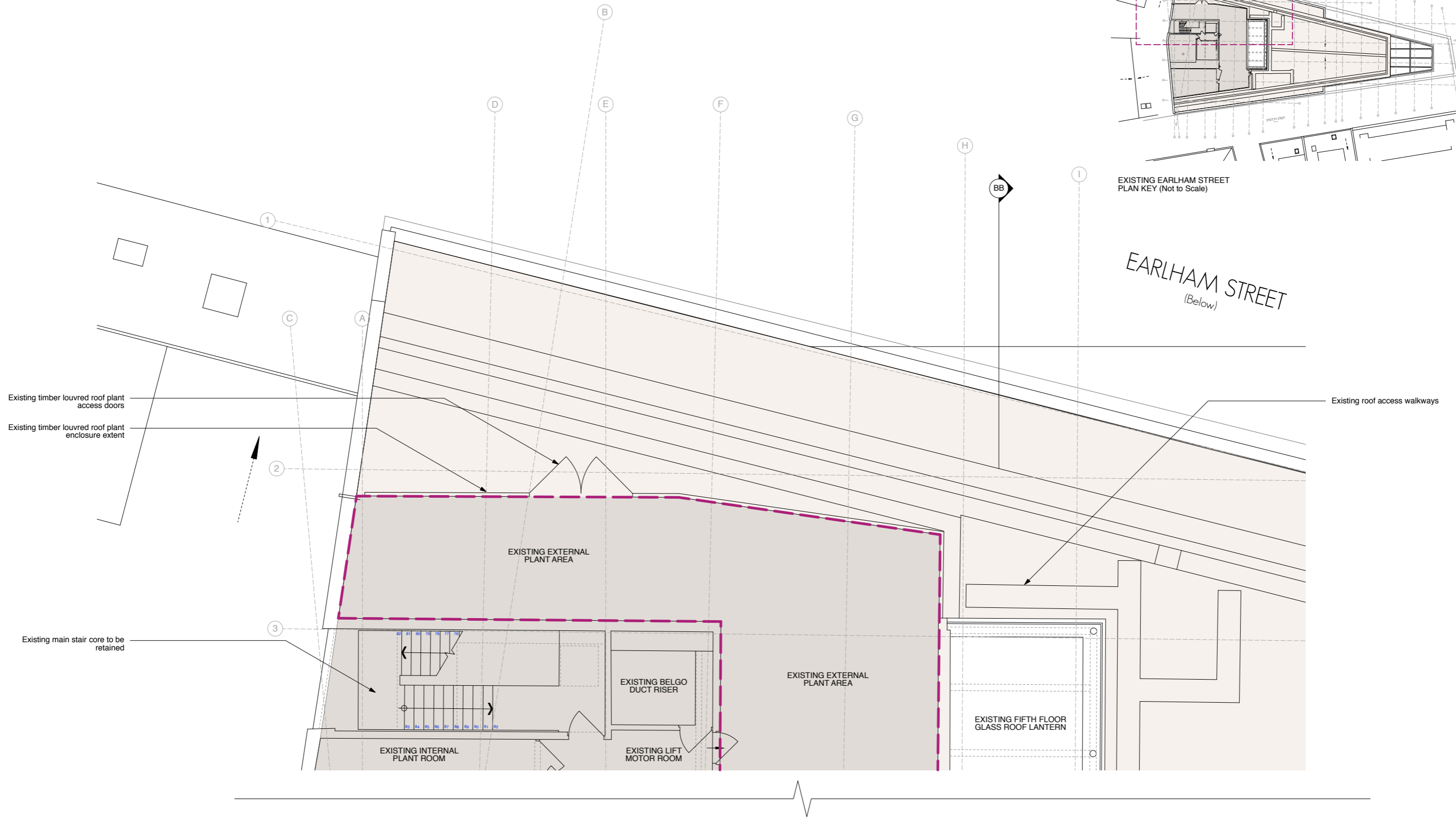


NOTE:
GRIDLINES ARE SET OUT ON EXISTING BUILDING
STRUCTURE LINES



EXISTING EARLHAM STREET
PLAN KEY (Not to Scale)


EARLHAM STREET
(Below)



EXISTING PLANT ENCLOSURE PLAN DETAILS



PLANNING

PROJECT		SEVEN DIALS WAREHOUSE LONDON WC2		DRAWING TITLE		EXISTING PLANT ENCLOSURE PLAN DETAILS	
CLIENT		PEC NEALE LTD		 architecture & interior design		Unit 1 9a Dollington Street Clerkenwell London EC1V 0BQ	
SCALE	1:50 @ A1	DATE	Oct 16	DWG BY	SF / DS	REV.	
CHCD.		DWG NO.	437-EX.20				
<small>The drawing is the copyright of gpad london ltd. Not to be reproduced, stored or disclosed to any unauthorised person either wholly or in part without written permission. Do not scale off this drawing. All indicated dimensions to be checked and verified on site by the contractor before commencement of any fabrication drawings or work whatsoever on site. Report any discrepancies to the architect immediately. Drawings to be read in conjunction with relevant drawings and specification.</small>		© gpad london ltd.		T: 020 7549 2133 F: 020 7549 2144 E: info@gpadlondonltd.com W: www.gpadlondonltd.com			