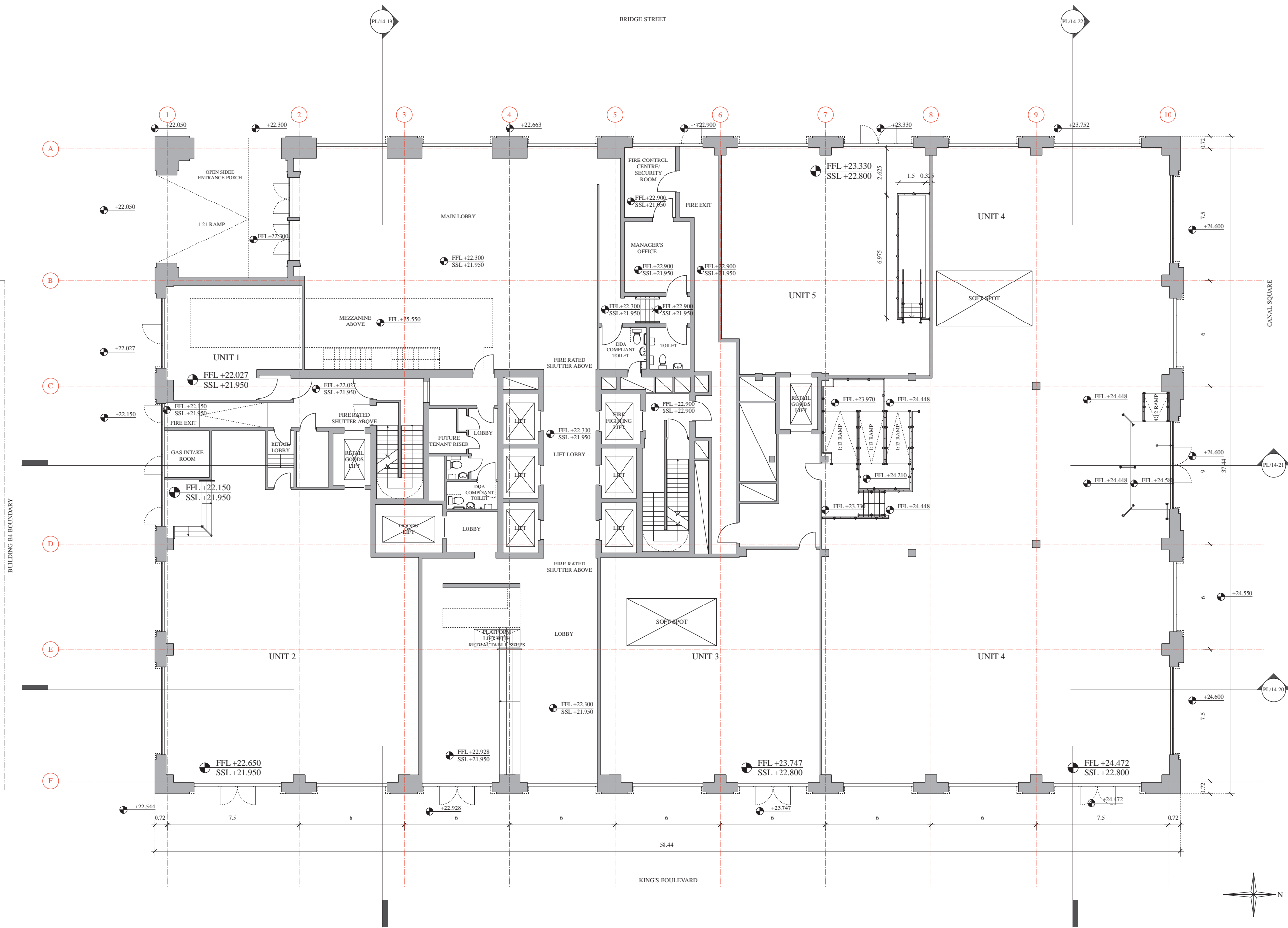


BUILDING B5 BOUNDARY

COPYRIGHT © 2014 PORPHYRIOS ASSOCIATES LLP

BRIDGE STREET



CANAL SQUARE

BUILDING B4 BOUNDARY

23.11.2016 RECONFIGURED FROM 4 TO 5 UNITS

REVISION	DATE	DESCRIPTION
A	23.11.2016	RECONFIGURED FROM 4 TO 5 UNITS

KCCGPL
BUILDING B6
 GROUND FLOOR PLAN
 FOR APPROVAL

DRAWING No	SCALE	DATE
PL/14-05/A	1:200 @ A3	JUN 2014

ARTISTIC DESIGN
PORPHYRIOS
 ASSOCIATES
 ARCHITECTURAL & URBAN CONSULTANTS

DEVON HOUSE, 171-177 GREAT PORTLAND
 STREET LONDON W1W 5PQ
 TEL: 020 7580 9594 FAX: 020 7580 9596
 enquiries@porphyrios.com

PORPHYRIOS ASSOCIATES LLP, Registered in England & Wales
 Number: 02763090 Registered Office: 20 Gresham Street London EC2V 7TE

